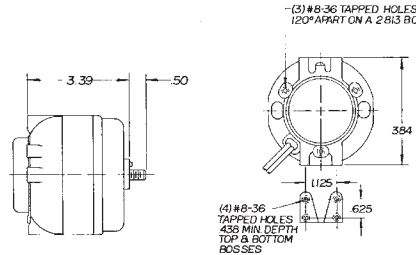


Manufactured by Electric Motors & Specialties 

16-25-35 WATT (1/50 to 1/20 HP)

Features:

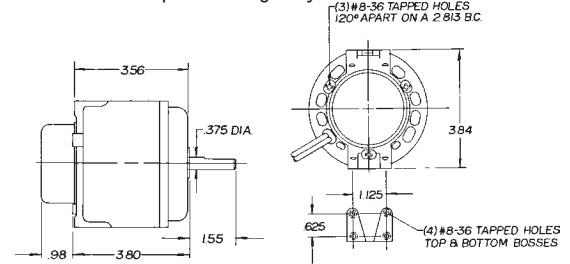
- High Efficiency
- Cast Iron
- Fan Motors
- Horizontal and Shaft Up mounting only



50-75 WATT (1/15 HP)

Features:

- High Efficiency
- Cast Iron
- Fan Motors
- Horizontal and Shaft Up mounting only



Watt Output	RPM	Volts	Amps	Stock Number	Alternate Stock No.	Shaft Diameter & Length	Rotation	EMS Number	OEM Part Number	Notes
15	1500	115	.60	277		5/16 x 7	CCWLE	ESPOL15EMJR11	24-0366	3
15	1500	115	.60	292		5/16 x 5	CCWLE	ESP-L15EMJR1B2		
15	1500	115	.60	293		5/16 x 7THD	CCWLE	ESP-L15EMJR1B1		3,6
15	1500	115	.60	294		5/16 x 5THD	CCWLE	ESP-L15EMJR1		1,3
15	1500	115	.60	295		5/16 x 7	CCWLE	ESP-L15EMJR1B3		
15	1500	115	.60	296		5/16 x 9	CCWLE	ESP-L15EMJR17		69
16	1500	115	.80	246		1/4 x 20THD	CWLE	ESPL16EM1		
16	1500	115	.80	247		1/4 x 20THD	CCWLE	ESPL16EMR1		185
16	1500	230	.40	248	UB16CWH	1/4 x 20THD	CWLE	ESPL16EM2		185
16	1500	230	.40	249		1/4 x 20THD	CCWLE	ESPL16EMR2		185
25	1500	115	1.1	297		5/16 x 7	CCWLE	ESPL25MJR1B1		3,69
25	1500	115	1.1	299		8-1/8 x 5/16 x 1/2	CCWLE	ESPOL25MVRD12		1
25	1500	115	1.1	250		1/4 x 20THD	CWLE	ESPL25EM1		
25	1500	115	1.1	251	UB25CCL	1/4 x 20THD	CCWLE	ESPL25EMR1		185
25	1500	230	.60	252		1/4 x 20THD	CWLE	ESPL25EM2		185
25	1500	230	.60	253		1/4 x 20THD	CCWLE	ESPL25EMR2		
35	1500	115	1.4	254		1/4 x 20THD	CWLE	ESPL35EM1	810M035A29	
35	1500	115	1.4	255		1/4 x 20THD	CCWLE	ESPL35EMR1		
35	1500	230	.70	256		1/4 x 20THD	CWLE	ESPL35EM2	810M035A21 & A28	
35	1500	230	.70	257		1/4 x 20THD	CCWLE	ESPL35EMR2		
50	1500	115	1.7	258		3/8 x 1-1/2	CWLE	ESPOL50EM1	050-0244-01	
50	1500	115	1.7	291		5/16 x 3	CWLE	ESPOL50EM1B1	134350000	3
50	1500	115	1.7	259		3/8 x 1-1/2	CCWLE	ESPOL50EMR1		3,6,185
50	1500	115	1.7	289		3/8 x 1-1/2	CWLE	ESPOL50EM13	998-1008-00	3,187
50	1500	230	.85	260		3/8 x 1-1/2	CWLE	ESPOL50EM2	050-0244-00	6
50	1500	208-230	1.2	9200		3/8 x 1-1/4	CWLE	ESPOL60EM2		
50	1500	230	.85	261		3/8 x 1-1/2	CCWLE	ESPOL50EMR2		3,6,185
50	1500	230	.85	276		5/16 x 2-1/2	CCWLE	ESPOL50EMJR21	810M050A62	3
50	1500	230	.85	285		5/16 x 1-1/2	CWLE	ESPOL50EM2B		3
50	1500	230	.85	288		3/8 x 1-1/2	CWLE	ESPOL50EM26	998-1007-00	3,187
50	1500	460	.44	290		3/8 x 1-1/2	CWLE	ESPOL50EM461	050-0244-02	3
75	1500	230	1.5	298		3/8 x 1-1/2	CWLE	ESPOL75EM2		

Notes:

- Item to be discontinued when stock is depleted
 - Special OEM Replacement Motor (See Page 16-18)
 - 60/50 HZ
 - Pin Hole
 - Items with Alternate and A. O. Smith stock numbers and same specifications are identical. The A. O. Smith stock number will be discontinued when stock is depleted.
 - Includes Mounting Bracket and Shaft Bushing
- See Parts & Accessories starting on page 258