



HVAC protection
SOLUTIONS

RSH Series

Surge Protection and Voltage
Monitoring Devices.





Stop damaging power fluctuation.



Ducted A/C



Ductless A/C



Whole House



Protect home and equipment from electrical surges, brownouts and other voltage disturbances.

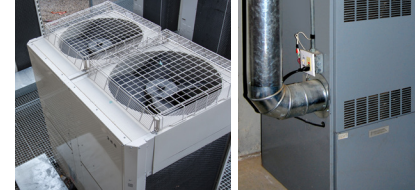
Maintain the security, function and longevity of electrical equipment.

- Performance.**
Long-lasting gas discharge tube technology
- Safety.**
Thermally-fused components
- Warranty.**
Unsurpassed industry product warranty
Extended connected equipment warranty



Whole House

Action videos and full details
[@rectorseal.com/surgeprotection](https://rectorseal.com/surgeprotection)



DUCTED/DUCTLESS A/C AND HEAT PUMPS

RSH-50

50kA Surge Protective Device (SPD)

| Code | Description | Qty |
|-------|------------------------------|-----|
| 96415 | Surge Protective Device 50kA | 6 |



FEATURES

- Long-lasting gas discharge tube technology
- TFMOV technology (thermally fused metal oxide varistor)
- Limited lifetime warranty
- Green LED easily indicates protection
- Weather-Rated under NEMA 4
- Fits all single-phase units
- UL 1449 listed
- NEC's highest short circuit current rating (SCCR) @200kA
- RoHS compliant

Application • Protect HVAC equipment from electrical surges • Protects from up to 50,000-amp single surges and up to 10,000-amp repetitive surges • Type 1 Device - can be mounted anywhere in the electrical system

Recommended for • Residential and commercial use • All single phase 120/240 VAC outside condensing units and indoor air handlers

Specifications

- Operating Voltage - 120/240VAC
- Max discharge current per phase - 50kA (1 hit survivability)
- Nominal discharge current - 10kA (15 hits survivability)
- Short circuit current - 200kA



1 LED

RSH-50 DB

50kA Surge Protective Device with Disconnect Box

| Code | Description | Qty |
|-------|---|-----|
| 96417 | RSH50 with Fused Disconnect Box 30A | 6 |
| 96418 | RSH50 with Fused Disconnect Box 60A | 6 |
| 96419 | RSH50 with Non-fused Disconnect Box 60A | 6 |



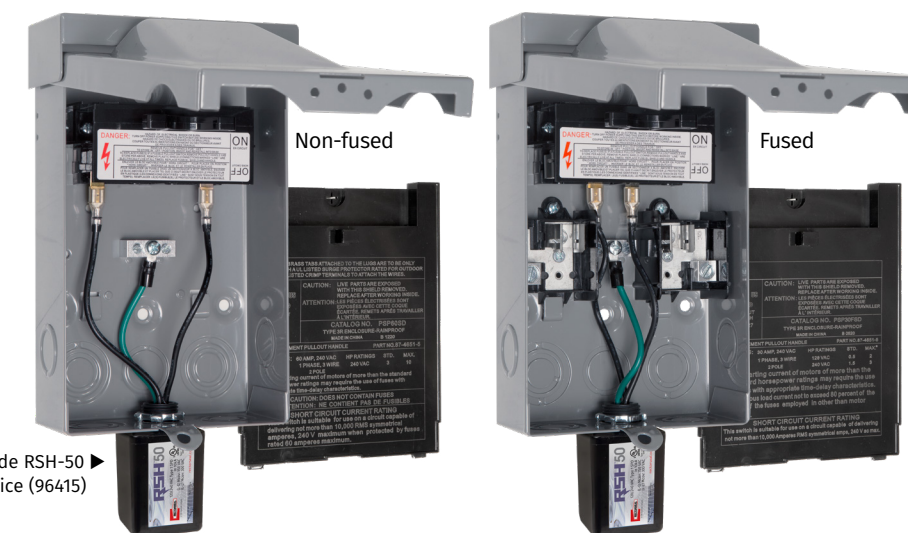
FEATURES

- Fused & non-fused option

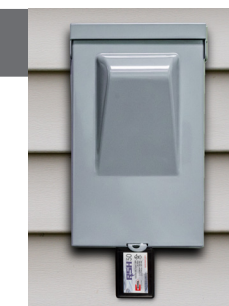


Application • Wall mount installation of RSH-50 (above)

Recommended for • Residential and commercial use • All single-phase 120/240 VAC outside condensing units and indoor air handlers



All DB models include RSH-50 surge protection device (96415)



DUCTED/DUCTLESS A/C AND HEAT PUMPS



WHOLE HOUSE PROTECTION

RSH-60

60kA Surge Protective Device (SPD)

| Code | Description | Qty |
|-------|------------------------------|-----|
| 96416 | Surge Protective Device 60kA | 4 |



FEATURES

- Dual LEDs, audible alarm with silence switch
- TFMOV technology (thermally fused metal oxide varistor)
- Long-lasting gas discharge tube technology
- Mounting feet for stability
- Weather-Rated NEMA 4X & IP 66
- Limited lifetime warranty
- UL 1449 listed
- NEC's highest short circuit current rating (SCCR) @200kA
- RoHS compliant

Application • Protect HVAC equipment from electrical surges • Protects from up to 60,000-amp single surges and up to 20,000-amp repetitive surges • Type 1 Device - can be mounted anywhere in the electrical system

Recommended for • Residential and commercial use • All single-phase 120/240 VAC outside condensing units and indoor air handlers.

Specifications

- Operating Voltage - 120/240VAC
- Max discharge current per phase - 60kA (1 hit survivability)
- Nominal discharge current - 20kA (15 hits survivability)
- Short circuit current - 200kA



RSH-60 VMD

60kA Surge Protective & Voltage Monitoring Device

| Code | Description | Qty |
|-------|----------------------------------|-----|
| 96426 | Surge protection device 60kA/VMD | 2 |



FEATURES

- Dual LEDs, audible alarm, voltage monitoring circuit
- TFMOV technology (thermally fused metal oxide varistor)
- Long-lasting gas discharge tube technology
- Mounting feet for stability
- Weather-Rated NEMA 4X & IP 66
- Limited 5 year warranty
- UL 1449 listed
- NEC's highest short circuit current rating (SCCR) @200kA
- RoHS compliant

Application • Protect HVAC equipment from electrical surges, brownouts, and short cycling • Protects from up to 60,000-amp single surges and up to 20,000-amp repetitive surges • Type 1 Device - can be mounted anywhere in the electrical system

Recommended for • Residential and commercial use • All split phase 240 VAC outside condensing units and indoor air handlers.

Specifications

- Operating Voltage - 240 VAC
- Max discharge current per phase - 60kA (1 hit survivability)
- Nominal discharge current - 20kA (15 hits survivability)
- Short circuit current - 200kA



RSH-120

Whole House Surge Protective Device (SPD)

| Code | Description | Qty |
|-------|-------------------------------|-----|
| 96414 | Surge Protective Device 120kA | 4 |
| 96422 | Flush Mount Plate (2 pack) | 1 |



FEATURES

- Dual diagnostic LEDs and audible alarm
- TFMOV technology (thermally fused metal oxide varistor)
- Long-lasting gas discharge tube technology
- Mounting feet for stability
- Weather-Rated NEMA 4X & IP 66
- Limited lifetime warranty
- UL 1449 listed
- NEC's highest short circuit current rating (SCCR) @200kA
- RoHS compliant

Application • Install at breaker box to protect whole home from transient power surges that can cause system lock-up and malfunctions, faulty output, corrupted files, equipment failure and long-term degradation of devices and equipment • Protects up to 120,000-amp single surges and up to 20,000-amp repetitive surges • Type 1 Device - can be mounted anywhere in the electrical system

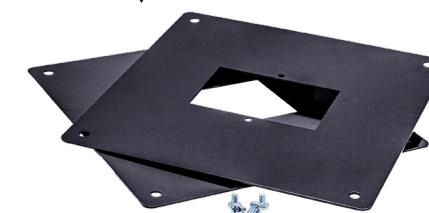
Recommended for • Residential and commercial use • All single-phase 120/240 VAC indoor facility breaker panel installation

Specifications

- Operating Voltage - 120/240VAC
- Max discharge current per phase - 120kA (1 hit survivability)
- Nominal discharge current - 20kA (15 hits survivability)
- Short circuit current - 200kA



96422 Metal Flush Mount Plates
Also fits RSH-60



DUCTED/DUCTLESS A/C AND HEAT PUMPS

RSH-VRM60A

Voltage Range Monitor (VRM)

| Code | Description | Qty |
|-------|-----------------------|-----|
| 96420 | Voltage Range Monitor | 4 |



FEATURES

- Over-Under voltage cutoff Delay can be adjusted from 0.5 to 60 Seconds
- Load restore delay adjustable from 1 to 600 seconds
- 120/240 single-phase, 60 Amp double pole capacity relays (handles loads 15-60 Amps)
- Impulse voltage up to 2.5 kV
- Magnetic latching relays for maximum reliability
- Large easy to read LCD digital display
- Dual red and green LED diagnostics indicators
- Easy set up, field programmable, no laptop or programming tool required
- Stores up to 300 over/under voltage and power-loss events in resettable internal memory
- Non-volatile memory retains all settings and event log when power is lost
- Universal 35mm snap-on din-rail receiver
- Snap-on finger guard screw terminal covers
- Large box lugs for easy wire insertion
- Din-rail housing & independently mounted
- Type 1 action
- Pollution degree 2
- UL listed

Application • Monitors the line, protecting equipment against over and under voltage conditions that can cause damage to circuit boards and motors • The unit is fully programmable to set the voltage cutoff range from 90V to 300V while storing up to 300 events

Recommended for • Residential and Commercial Use, all single-phase 120/240V HVACR Equipment (air conditioning, heat pumps, mini-split applications)



Din-Rail Mounted



RSH-50 VRM Kits

SPD & Voltage Range Monitor (VRM)

| Code | Description | Qty |
|-------|---|-----|
| 96421 | Surge Protection 50kA/VRM Kit | 1 |
| 96424 | Surge Protection 50kA/VRMDC Kit (with Disconnect Breaker) | 1 |



FEATURES

- 60A safety disconnect breaker (VRMDC kit only)
- Includes RSH-VRM60A and RSH-50
- Over-Under voltage cutoff delay can be adjusted from 0.5 to 60 seconds
- Load restore delay adjustable from 1 to 600 seconds
- 120/240 single-phase, 60 amp double pole capacity relays (handles loads 15-60 amps)
- Magnetic latching relays
- Large easy to read LCD digital display
- Dual red and green LED diagnostics indicators
- Easy set up, field programmable, no laptop or programming tool required
- Stores up to 300 over/under voltage and power-loss events in resettable internal memory
- Non-volatile memory retains all settings and event log when power is lost
- Universal 35mm snap-on din-rail receiver
- Snap-on finger guard screw terminal covers
- Large box lugs for easy wire insertion
- Entire kit is NEMA 3R enclosure, with the VRM60A having din-rail housing

Application • Protects equipment from electrical surges and voltage disturbances by utilizing safety thermal fusing and gas discharge tube surge protection technology, combined with the ability to monitor the line protecting equipment against over and under voltage conditions that can cause damage to circuit boards and motors

• Fully programmable to set the voltage cutoff range from 90V to 300V while storing up to 300 events

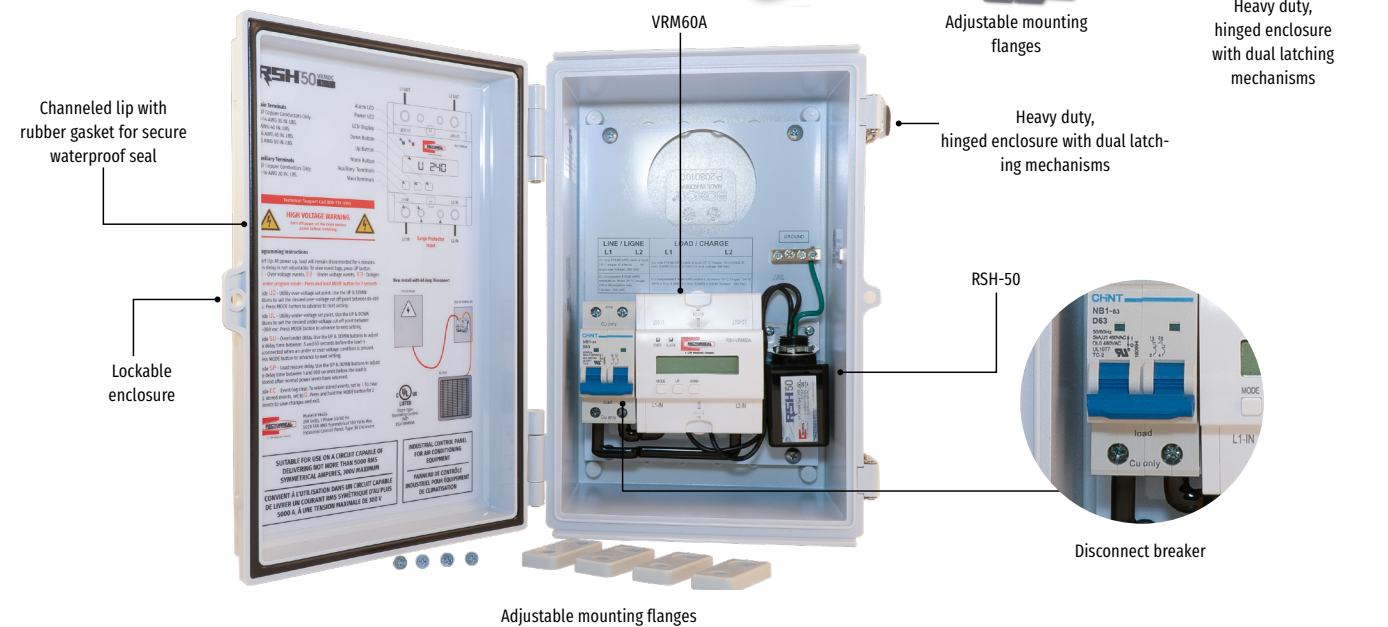
Recommended for • Residential and commercial use, all single-phase 120/240V HVACR equipment (air conditioning, heat pumps, mini-split applications)



RSH-50 VRM Kit



RSH-50 VRMDC Kit

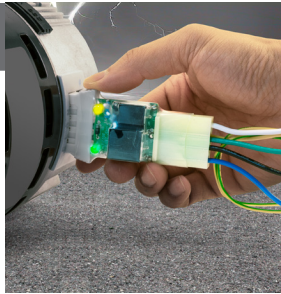


DUCTED A/C AND HEAT PUMPS

RSH-20

Motor Protector (MP)

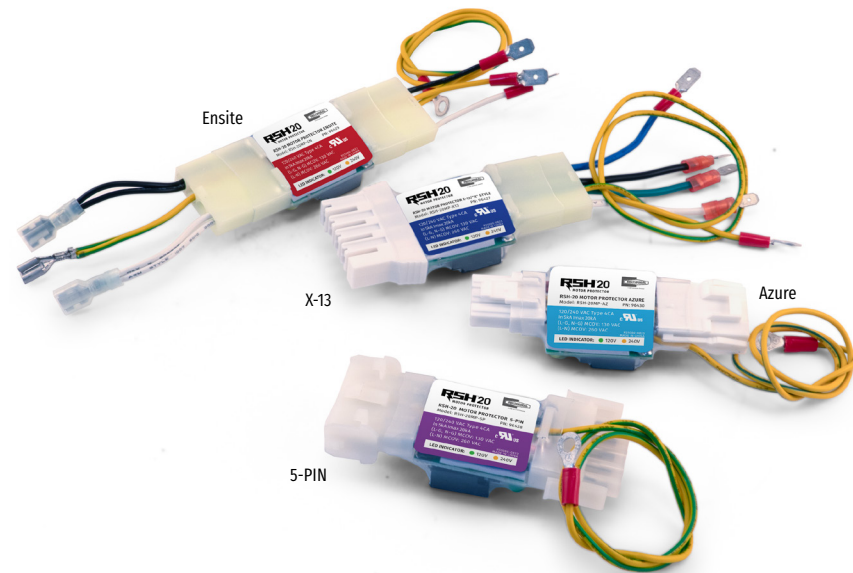
| Code | Description | Qty |
|-------|--|-----|
| 96427 | RSH 20kA SPD for X-13/"X" Style Motors | 12 |
| 96428 | RSH 20kA SPD for 5-PIN Motors | 12 |
| 96429 | RSH 20kA SPD for Ensite Motors | 12 |
| 96430 | RSH 20kA SPD for Azure Motors | 12 |



Application • The surge protection device protects single-phase 120/ 240V ECM indoor motors from transient over-voltage and natural-cause surges • Type 4CA Device - mounts between the motor and power harness

Recommended for • Residential and Commercial Use, all single-phase 120/240V ECM indoor motors: X-13/"X" Style, 5-PIN, Ensite, and Azure

Specifications • Operating Voltage – 120/240 VAC
 • Max discharge current per phase – 20kA (1 hit survivability) • Nominal discharge current – 5kA (15 hits survivability)



FEATURES

- UL Recognized
- Thermally Fused MOV technology for safety & performance
- Limited 5 year warranty
- 3 modes of protection: L-G, N-G, L-N
- Plug-n-Play for ease of installation
- Diagnostic LED indicates protection



A CSW Industrials Company

Extended RSH product information can be found at:
rectorseal.com/surgeprotection

RECTORSEAL HVAC DIVISION

RectorSeal provides industry-leading digital and print support materials for its extensive chemical and mechanical solutions that include:

- Technical Product Information
- Marketing Support Materials
- Engaging Product Demonstration Videos
- Informative SDS and Product Data Sheets
- On-demand and Live Training and Webinars
- Learning Management System (LMS) support via RectorSeal Academy
- Informative Distributor and Sales Representative Tools
- Industry-related Tradeshow and Events Information

For complete details, visit www.rectorseal.com

For the latest product enhancements, news, and updated information, please follow RectorSeal's social media channels.

facebook.com/rectorseal

linkedin.com/company/rectorseal

twitter.com/rectorseal

instagram.com/rectorseal

youtube.com/rectorsealcorp

All information is believed to be current at the time of printing, but our policy is one of continuous development. RectorSeal makes no warranties, express or implied, as to its accuracy. RectorSeal reserves the right to discontinue, update or change the information at any time without notice or without incurring obligations.

RectorSeal® • 2601 Spenwick Drive, Houston, TX 77055, USA • 713-263-8001 • rectorseal.com

RectorSeal®, the logos and other trademarks are property of RectorSeal, LLC, its affiliates or its licensors and are protected by copyright, trademark and other intellectual property laws, and may not be used without permission. RectorSeal reserves the right to change specifications without prior notice. ©2024 RectorSeal. All rights reserved. R50366-0124