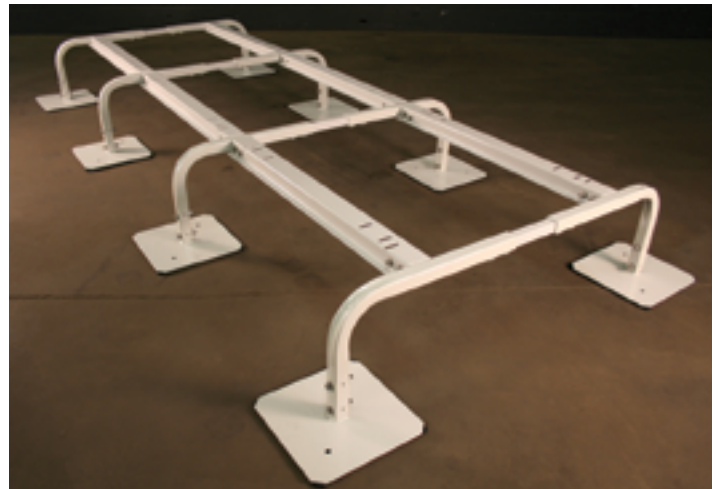
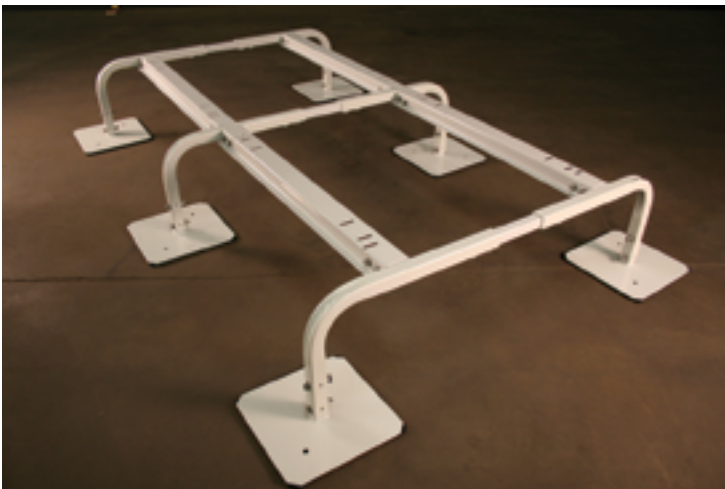


QUICK-SLING®



391 WEST WATER STREET
TAUNTON, MA 02780

WWW.QUICK-SLING.COM
INFO@QUICK-SLING.COM

P: 1.800.699.0453
F: 1.800.699.0423

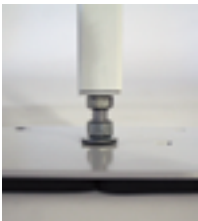
QUICK-SLING MINI-SPLIT STANDS

QSMS1200 • QSMS1201 • QSMS1800 • QSMS1801 • QSMS2400 • QSMS2401

U.S. PATENT NO. 8,827,232 B2

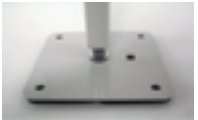


- Our Mini Split Stands provide a safe, stable platform to mount your unit on.
- Keeps unit elevated above lawn mowers, weed whackers, pets, snow, and flooding.
- Elevated height allows for ease of installation, maintenance, and service.



Each foot is 6"x 6" 11 gauge steel and is adjustable up to 1.25" in height.

(4) 3/8" holes allow the stand to be bolted to any surface for security and stability.



Additional carriage bolt hole allows for optional footprint reduction to 34 1/16"



50-derometer rubber pads are included.

Our Mini Split Stand is made of 14-gauge square tubing which is powder coated for outdoor use and able to hold up to 400 lbs.



18" and 24" stands are equipped with additional support arms



Each stand comes with 2 arms slotted to fit all units on the market. See compatibility charts at www.quick-sling.com. All necessary hardware is provided.



4 points of anti-vibration isolation washers are provided.



12", 18", & 24" stands are available in 2 depths:
QSMS1200 - Thin QSMS1201 - Wide
QSMS1800 - Thin QSMS1801 - Wide
QSMS2400 - Thin QSMS2401 - Wide

Adjustable in length from 34" to 40" in 1" increments.



visit www.quick-sling.com for Mini Split compatibility charts.



WALL BRACKET QSWB1000



Our Wall Bracket provides a quick, safe, and stable way to mount your unit. It allows for easy access during installation, service, and maintenance.

The QSWB1000 is made of 11-gauge square, steel tubing which not only cuts down on vibration but is also able to hold up to 500 lbs.



4 points of anti-vibration isolation with 50 derometer rubber washers. Galvanized hardware for mounting the unit is included.

Design allows for mounting units up and out or down and out.



Mounting shelf is 26" in depth and pre-slotted to quickly mount units.

Works great with a wide range of Mini Split units.



WALL BRACKET QSWB2000/QSWB4000



Our Wall Bracket provides a quick, safe, and stable way to mount your unit. It allows for easy access during installation, service, and maintenance.



The bracket has 6 points of anti-vibration isolation using 50-derometer rubber washers.

Mounting shelf is pre-slotted to quickly connect units.

All necessary hardware is included.



The slide track is completely adjustable from 0"-34" in width.



25" Shelf depth allows for 12" of clearance between the wall and the unit per manufacturer's specification.

QSWB2000 - max cap 350 lbs
QSWB4000 - max cap 500 lbs

*As of 1/1/2015 Quick-Sling offers a 2-year warranty on steel & workmanship;
Quick-Sling products are coated in accordance with ASTM D3451-06.



WALL BRACKET QSWB3000



Our Wall Bracket provides a quick, safe, and stable way to mount your unit.

It allows for easy access during installation, service, and maintenance.

The QSWB3000 is made of 11-gauge square, steel tubing. This not only cuts down on vibration but allows the bracket to hold up to 300 lbs.



4 points of anti-vibration isolation with 50 derometer rubber washers. Galvanized hardware for mounting the unit is included.



19" shelf depth & 7" clearance from Z bend for a total of 26" clearance to allow for correct spacing between wall and unit.

Works great with a wide range of Mini Split units.



ROOF BRACKET QSRB1000



Our roof bracket accessory is designed to protect your equipment from snow and freezing rain while maintaining proper air flow around the unit.



Roof is made from unbreakable UV protected twin wall plastic.

The bracket is made from 14 - gauge square, steel tubing.



Fits all QSMS Mini Split Stands, and Wall Brackets: QSWB2000 and QSWB3000



MINI SPLIT DUAL FAN STAND

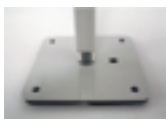
QSMS1202/QSMS1802/QSMS2402

U.S. PATENT NO. 8,827,232 B2

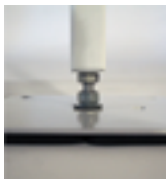
- Our Mini Split Dual Fan Stand provides a safe, stable platform to mount your unit on.
- Keeps it elevated above lawn mowers, weed whackers, pets, snow, and flooding.
- Allows for easy access during installation, service, and maintenance.



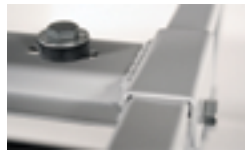
The Dual Fan Stand is made of 14-gauge square, steel tubing, and 11 gauge steel cross rails. This cuts down on vibration and enables the stand to hold up to 400 lbs.



Each foot is 6"x 6" 11 gauge steel and is adjustable up to 1.25" in height.



(4) 3/8" holes allow the stand to be bolted to any surface for security and stability.



Includes 50 deromometer rubber foot pads and 4 anti-vibration isolation washers



Available in 12", 18" or 24" height 30.5" width X 38" depth.

QSMS1802/2402 includes 2 additional stabilization arms.



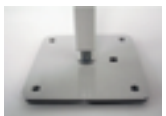
MINI SPLIT DOUBLE STACK STAND

QSMS1203

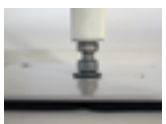
- Our Mini Split Double Stack Stand provides a safe, stable platform to mount your unit on.
- Keeps it elevated above lawn mowers, weed whackers, pets, snow, and flooding.
- Allows for easy access during installation, service, and maintenance.



The QSMS1203 stand is made of 14-gauge square, steel tubing which is powder coated for outdoor use. The bottom shelf holds 400 lbs. the top shelf holds 200 lbs.



Each foot is 6"x 6" 11 gauge steel and is adjustable up to 1.25" in height.



(4) 3/8" holes allow the stand to be bolted to any surface for security and stability.



12 points of anti-vibration isolation washers are provided including four 50-deromometer rubber pads for each foot.



Ground Height 12"
Total Height 56"
Width 36"
Min. Slot Pattern 7 3/8"
Max. Slot Pattern 13"



VRF/VRV/HRV SUPER STANDS

QSSS1003-1025

U.S. PATENT NO. 866,754

Superstands come with single and double sided U Bars to accommodate any multi-unit combination.

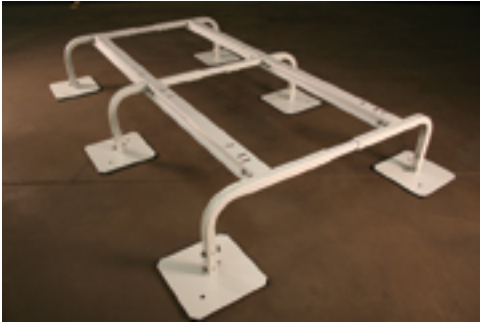
U Bar Details:

- 1.5" x 1.5" - U Bars made from 11 gauge steel square tubing.
- Adjustable width in 1" increments.
- Adjustable height in 1/4" and 1/2" increments.
- Rubber roof friendly.
- 12" x 12" feet made from 7 gauge steel with
- 3/8" holes for mounting.

Super Stand sizing options:

- 36" Hat Flange Cross Rail - SS36 (TYPE A)
- 48" Hat Flange Cross Rail - SS48 (TYPE B)
- 55" Hat Flange Cross Rail - SS55 (TYPE D)
- 70" Hat Flange Cross Rail - SS70 (TYPE C)

Galvanized mounting hardware included. Seismic Certified.
Meets all ASCE 7 overturning factor of safety requirements.



Available in 12" 18" & 24" Heights



QUICK-SLING ACCESSORIES

QSAC1000/1100 • QSAC2000/2100

- The QSAC1000 (set of 4) & 1100 (set of 2) steel beam adapters are made out of aluminum & able to hold up to 250 lbs each.
- Each QSAC1000 is slotted to receive 3/8 threaded rod or C - clamps for easy mounting.
- The QSAC2000 (set of 4) & 2100 (set of 2) wood beam adapters are made of steel & are 12" long & 2" wide.
- Each of our adapters are able to hold up to 200 lbs.
- They have a 1.5" bend that simply clips over the wood joist. All the necessary hardware is provided.
- QSAC1000 and QSAC2000 adapts: QSLG1000 & QSLG2000
- QSAC1100 and QSAC2100 adapts: QSWI1000 & QSWI2000

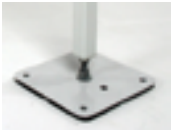




QUICK HEAT PUMP STAND QSTD3000

U.S. PATENT NO. 8,827,232 B2

- Our 18" Heat Pump Stand provides a safe stable platform to mount your unit on.
- Keep it elevated above lawn mowers, weed whackers, pets, snow, and flooding.
- Elevated height allows for ease of installation, service, and maintenance.



Each foot is 6"x 6" 11 gauge steel and is adjustable up to 1.25" in height.

(4) 3/8" holes allow the stand to be bolted to any surface for security and stability.



50-derometer rubber pads are included.

Made of 14-gauge square tubing which is powder coated for outdoor use and able to hold up to 500 lbs.



2 multi-position clips are provided for mounting the unit to the stand.

Includes 4 arms, 2 for mounting the unit and 2 for stabilization.



18" fixed height
Adjustable in 2 dimensions:

- Width 24" x 38"
- Length 30" x 48"



VERTICAL AIR HANDLER STAND

QSTD4000 QSTD4001 QSTD4002
QSTD5000 QSTD5001 QSTD5002
QSTD6000 QSTD6001 QSTD6002

U.S. PATENT NO. 8,827,232 B2

- Fits all LG, Unico and Mitsubishi Air Handlers
- Adjustable left to right in 1" increments up to 6"
- 18" and 24" stands include 2 stability arms
- 500 lbs Max Capacity



- QSTD4000 - 12" height; 19" arm
- QSTD4001 - 12" height; 23" arm
- QSTD4002 - 12" height; 27" arm
- QSTD5000 - 18" height; 19" arm
- QSTD5001 - 18" height; 23" arm
- QSTD5002 - 18" height; 27" arm
- QSTD6000 - 24" height; 19" arm
- QSTD6001 - 24" height; 23" arm
- QSTD6002 - 24" height; 27" arm



BOILER BRACKET QSBB1000 & QSBB2000

- Our boiler bracket works with all wall hung boilers and tankless hot water heaters available
- Fixed width 32"
- Wall hung height 48"
- Holds up to 500 lbs
- All necessary hardware is included for mounting to any surface

The QSBB2000 Leg Kit attaches to the QSBB1000 to make a free standing floor mount stand for all wall hung boilers and hot water heaters. Alleviates the need to move existing plumbing for centrally located units. Adjustable height from 4' to 6'



SWIVEL "U" MOUNT WITH H OR I BRACKET QSWI1000 & QSWI2000



Our Quick Swivel is made with 14-gauge steel able to hold 200 lbs. The swivel allows for 360° rotation for setting the perfect direction of air flow.



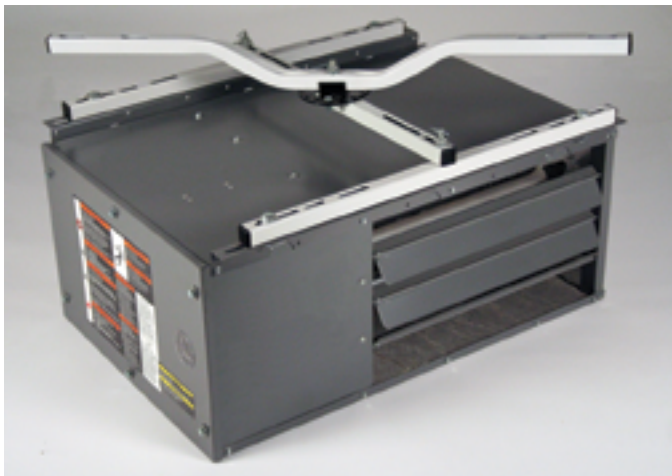
12 points of anti-vibration isolation is provided along with 3 hitch pins for the "H" bracket or a single hitch pin for the "I" bracket. This adds to the safety & sturdiness of the Quick Swivel.



Each arm attaches to wood using 2 zip screws for stability & a 4" through bolt & wing nut for security. It can also be installed using our steel beam adapters.(not included)



Extension arms individually adjust in 1" increments using thumb screws & wing nuts for speed & versatility. This "U" mount installs as high as 19.5" or as low as 27.5" on flat or pitched roofs.



FLUSH MOUNT SWIVEL WITH H BRACKET QSWI3000, QSWI3001, QSWI3002



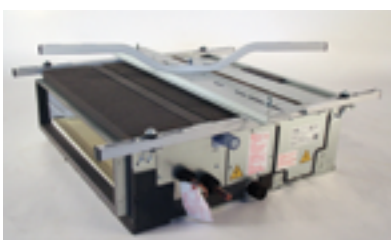
The flush mount hanger is slotted to receive a 3/8" lag bolt 16" or 24" on center. It can be attached parallel or perpendicular to the joist.



Our Quick Swivel is made with 14-gauge steel able to hold 200 lbs. The swivel allows for 360° rotation for setting the perfect direction of air flow.



The square steel tubing cuts down on vibration while 3 hitch-pins on the "H" bracket add to the safety and sturdiness of the Quick Swivel.

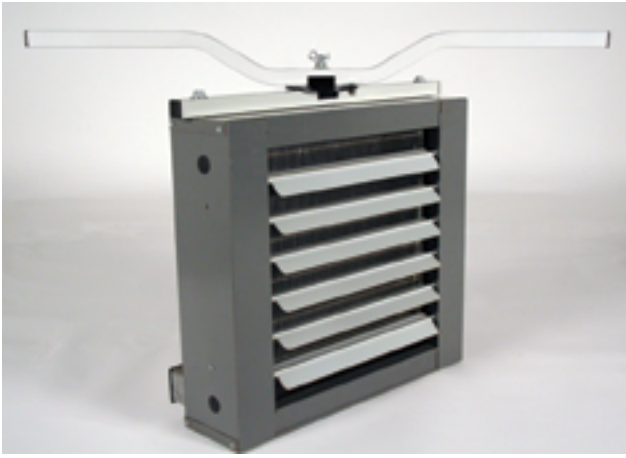


The QSWI3001 features 36" connection arms and a 36" spreader plate. The plate provides additional stability for wider units and is able to hold 200 lbs. The plate is slotted to allow 360° rotation for setting the perfect direction of air flow.

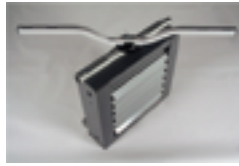


The QSWI3002 features 36" connection arms and a 17" spreader plate

visit www.quick-sling.com for compatibility charts to fit your unit



FLUSH MOUNT SWIVEL WITH I BRACKET QSWI4000



The square steel tubing cuts down on vibration while a hitch-pin on the "I" bracket adds to the safety and sturdiness of the Quick Swivel.



Our Quick Swivel is made with 14-gauge steel able to hold 200 lbs. The swivel allows for 360° rotation for setting the perfect direction of air flow.



The flush mount hanger is slotted to receive a 3/8 lag bolt 16" or 24" on center. It can be attached parallel or perpendicular to the joist.



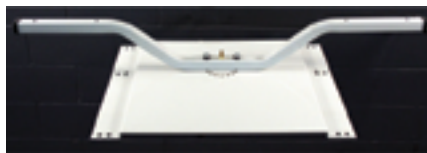
FLUSH MOUNT SWIVEL QSWI5000



The mounting plate is pre-slotted to receive a 3/8 hex bolt. It can be attached parallel or perpendicular to the joist.



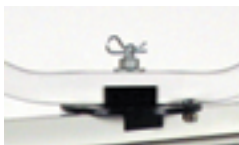
Fits most large unit heaters. Units 400 lbs and under mount comfortably. Includes the following manufacturers: Beacon Morris, Reznor, Modine, Sterling, etc
See compatibility charts at www.quick-sling.com.



Our Quick Swivel is able to hold up to 400 lbs. The swivel allows for a 360° rotation for setting the perfect direction of air flow.



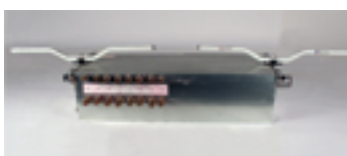
FLUSH MOUNT SWIVEL QSWI6000



The square steel tubing cuts down on vibration while a hitch-pin on the "I" bracket adds to the safety and sturdiness of the Quick Swivel.



The 2 omega bars are slotted to receive a 3/8 lag bolt 16" or 24" on center. It can be attached parallel or perpendicular to the joist.



Our Quick Swivel is made with 14 gauge steel and able to hold up to 400 lbs. The swivel allows for rotation of the omega bar to accommodate installation.



QUICK-SLING

QSLG2000

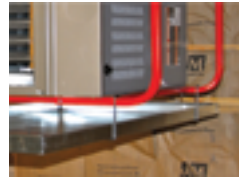
U.S. PATENT NO. 8,701,261



Each arm attaches to wood using 2 zip screws for stability and a 4" through bolt & wing nut for security. Installs to steel using steel beam adapters (sold separately).



28 points of anti-vibration isolation is provided using four 50-derometer self adhesive rubber pads & 24 rubber washers.



32" secondary drain pan hangers are provided & install in seconds.
*Drain pan not included.



Adjustable in 3 dimensions
Height: 24" to 48"
Width: 38" to 48"
Length: 32" to 48"



Extension arms individually adjust in one inch increments using thumb screws & wing nuts for speed & versatility. Installs as high as 24" or as low as 48" on flat or pitched roofs.



Our Quick-Sling is made of 14-gauge square, steel tubing. This not only cuts down on vibration but allows the sling to hold up to 400 lbs.



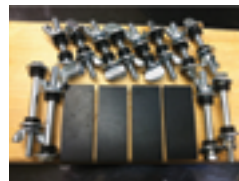
QUICK-SLING

QSLG1000

U.S. PATENT NO. 8,701,261



Each arm attaches to wood using 2 zip screws for stability and a 4" through bolt & wing nut for security. Installs to steel using steel beam adapters (sold separately).



28 points of anti-vibration isolation is provided using four 50-derometer self adhesive rubber pads & 24 rubber washers.



32" secondary drain pan hangers are provided & install in seconds.
*Drain pan not included.



Extension arms individually adjust in one inch increments using thumb screws & wing nuts for speed & versatility. Installs as high as 36" or as low as 54" on flat or pitched roofs.



Our Quick-Sling is made of 14-gauge square, steel tubing. This not only cuts down on vibration but allows the sling to hold up to 300 lbs.

Adjustable in 3 dimensions:

• Height: 24" to 48" • Width: 38" to 48" • Length: 32" to 48"



QUICK-STAND QSTD1000

U.S. PATENT NO. 8,827,232 B2



Each foot attaches to wood using 4 zip screws for stability & security.



20 points of anti-vibration isolation are provided using four 50-derometer self-adhesive rubber pads & 16 rubber washers.



Secondary pan shelf is provided for convenient install & future maintenance.

*Drain pan not included.



Adjustable in 3 Dimensions:

Height 12"-22"

Width: 32"-48"

Length: 32"-48"



Each leg individually extends in 1" increments using thumb screws & wing nuts for speed and versatility. Installs as low as 22" on flat or uneven surfaces.



Our Quick-Stand is made of 14-gauge square tubing. This not only cuts down on vibration but allows the stand to hold up to 500 lbs.



QUICK-STAND LIGHT DUTY QSTD2000

U.S. PATENT NO. 8,827,232 B2



The Quick-Stand has a fixed height of 12", however you can adjust the length from 32" to 48".



4 points of anti-vibration isolation is provided using four 50-derometer self-adhesive rubber pads.



Our Quick-Stand is made of 14-gauge square tubing. This not only cuts down on vibration but allows the stand to hold up to 300 lbs.

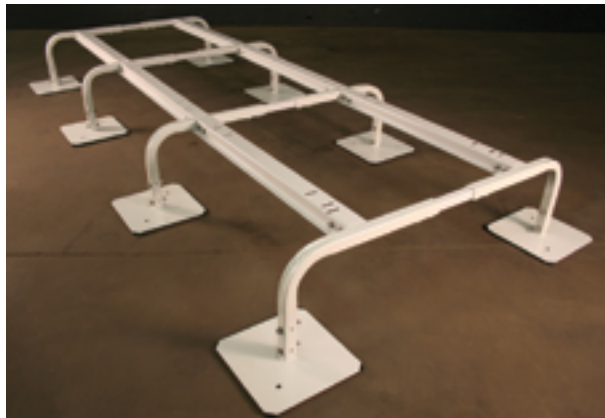
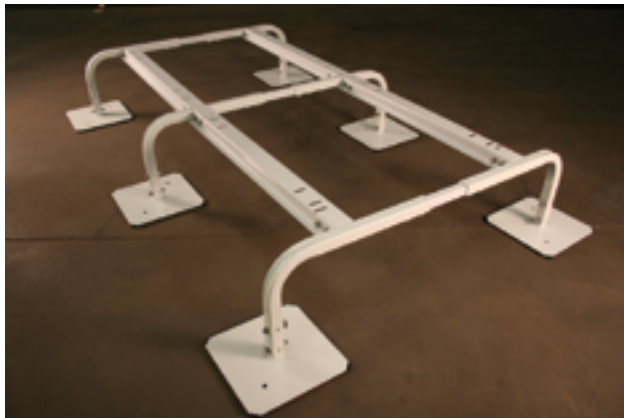


Secondary drain pan shelf is provided for a convenient install & future maintenance.

*Drain pan not included.

QUICK-SLING®

a **DIVERSITECH**® company



391 WEST WATER STREET
TAUNTON, MA 02780

WWW.QUICK-SLING.COM
INFO@QUICK-SLING.COM

P: 1.800.699.0453
F: 1.800.699.0423

www.facebook.com/QuickSling • twitter.com/QuickSling • www.youtube.com/QuickSling

A DiversiTech Company
LIT-CAT-QS
©DiversiTech Corporation 06/16

