



## REPLACEMENT GAUGES

Oxygen cleaned welding gauges (cleaned for oxy per A.N.S.I. B40.1) suitable for use with oxygen, other fuel gases and medical equipment (that is non corrosive to brass or bronze) and where stem mounting is desired. Quality brass and steel case construction with one piece polycarbonate lens. Recommended for use with compressed gas regulators. Most 1 1/2" welding gauges are fitted with a protective rubber gauge boot.



G19D



G15



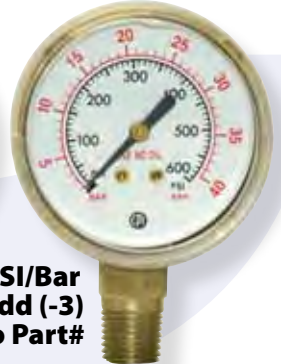
PSI Only



PSI/Kg  
Add (-1)  
to Part#



PSI/kPa  
Add (-2)  
to Part#



PSI/Bar  
Add (-3)  
to Part#

**1 1/2" GAUGES (1/8" NPT\*\*)**

**2" GAUGES (1/4" NPT\*\*)**

**2 1/2" GAUGES (1/4" NPT\*\*)**

PRESSURE CALIBRATION	POWDER PAINTED STEEL CASE	GOLD STEEL CASE	GOLD STEEL CASE	BRASS CASE	BRASS CASE	GOLD STEEL CASE	BRASS CASE	GOLD STEEL CASE
	B.M.*	B.M.*	C.B.M.*	B.M.*	C.B.M.* <small>WITH WEEP HOLE</small>	B.M.*	B.M.*	B.M.*
15 PSI (180° scale)	-	G20	-	-	-	-	-	-
30 PSI (Red Line 15-30)	G15 (RED)	G79	-	G2	-	G2S	G22	G22S
30 PSI	-	G80	-	G74	-	G74S	G75	G75S
60 PSI	-	G83	-	G5	G105	G5S	G25	G25S
100 PSI	G49 (GREEN)	G85	G185	G6	G106	G6S	G26	G26S
200 PSI	-	G78	G178	G4	G104	G4S	G24	G24S
300 PSI	-	G84	G184	G33	-	G33S	-	-
400 PSI	-	G73	-	G1	G101	G1S	G21	G21S
1/4, 1/2, 3/4 CONTENTS	G19 (RED)	-	-	-	-	-	-	-
600 PSI	-	-	-	G8	G108	G8S	G28	G28S
1000 PSI	-	-	-	G34	-	G34S	-	-
4000 PSI, (M) LISTED	G56 (GREEN)	G82	G182	G7	-	G7S	G27	G27S
6000 PSI, (M) LISTED	-	-	-	G44	-	G44S	G46	G46S

\*B.M. = Bottom Mount - C.B.M. = Center Back Mount. \*\* For 1/8" NPT add (-4) to Part Number. For display cards add (-D) to Part Number

	PART#	1 1/2" DESCRIPTION	PART#	2" DESCRIPTION	PART#	2 1/2" DESCRIPTION
DISPLAY CARD	PL15	POSI-LOCK	PL2	POSI-LOCK	PL25	POSI-LOCK
BULK	05-1-52	FLAT PLASTIC	05-2-52-4	FLAT PLASTIC	05-3-52-8	POSI-LOCK
	05-1-52-7	POSI-LOCK	05-2-52-7	POSI-LOCK		
	05-1-63	FRICTION RING	05-2-63-2	FRICTION RING		