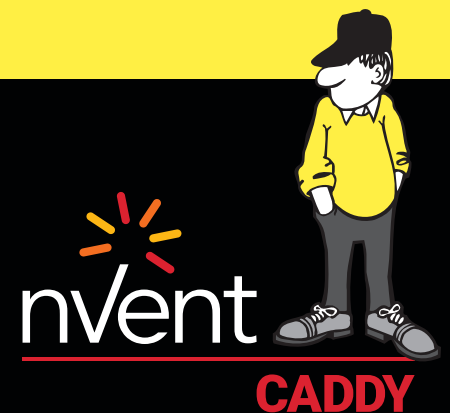




**CONNECT AND PROTECT**

# HVAC and Refrigeration Solutions







# Table of Contents

Built for Projects, Designed for People .....	4
Customer-Inspired Solutions .....	5
HVAC and Refrigeration Solutions .....	6
Engineering and Support .....	7
Rooftop Solutions.....	8-9
Seismic Bracing Solutions .....	10-11
Duct Hanging Solutions .....	12-14
Hanging Solutions .....	15
Trapeze Solutions.....	16-17
Structural Attachment Solutions.....	18-19

See how easy it is to install our  
nVent CADDY products.

Watch videos on our HVAC Solutions.



# Built for Projects, Designed for People

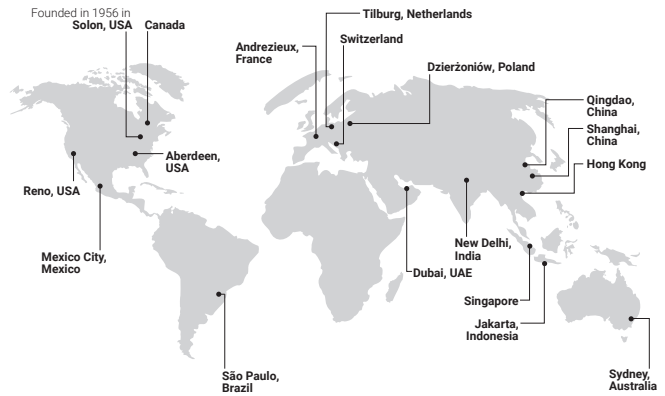
## FOUNDED IN THE USA, SUPPORTED WORLDWIDE



Founded in 1956  
in Solon, Ohio

nVent CADDY was founded and is based in the United States, but has a wide global footprint with manufacturing plants throughout the United States, the Netherlands, France, and other regional hubs.

With a commitment to serving the customer with the best products on the market, the nVent CADDY team maintains visibility into the manufacturing process from start to finish.



## YOUR TEAM IS OUR TEAM

For decades, our product development team has worked with contractors on job sites to understand their challenges and frustrations. The team then applies these observations, developing solutions fitting contractor needs, including ways to reduce time, increase ease of and overall installation. Once a product is developed, the team validates it in the field with our customers. Over the years, nVent CADDY has created a unique relationship with our customers, even creating products named for our most loyal.

nVent CADDY application engineers and product developers spent over 330 days (and counting!) in the field identifying new ways to create efficiencies and end-user value.



## THE BEST TRAINING FOR THE BEST PRODUCTS

nVent CADDY has opportunities for customers to participate in nVent CADDY School, a training session that takes place several times a year, walking users through product installation and benefits. nVent CADDY is also investing in the future by supporting new apprentices as well as those with many years in the field. The nVent CADDY team gets out of the office and into the field to do on-site training and demos for customers as well.



See what gear you can earn through the nVent CADDY Stuff Contractor Appreciation program!

Visit the Partners section on [nVent.com/CADDY](http://nVent.com/CADDY) or contact your sales rep to get started.



# Customer-Inspired Solutions



nVent CADDY's team of experts take the time to create solutions with the customer and their challenges in mind, as well as trends in the current market. Hours of research, product development and engineering goes into the nVent CADDY products customers know and love.

nVent CADDY products help customers solve problems by creating solutions for their biggest obstacles.



**BUILDING CODE REQUIREMENTS**



**PROJECT CHALLENGES**



**ENVIRONMENTAL FACTORS**



**FIRE SAFETY**



**CRITICAL EQUIPMENT PROTECTION**

nVent CADDY products solve for these challenges and more, while being engineered to be:



## **SAFE**

Many injuries on the job site are the result of falls. nVent CADDY products are designed to move a significant amount of the work previously completed on lifts and ladders to ground level, greatly reducing the risk of injury. Tool-free components also limit the use of potentially dangerous power tools.



## **FAST**

Every part of an nVent CADDY product is meticulously designed to reduce the amount of total installation time. This is done by making the product install quicker than its traditional counterpart as well as creating products that make it easy to prefabricate complex assemblies on the ground or offsite. Limit rework after installation and meet jobsite deadlines using innovative nVent CADDY products.



## **EASY**

nVent CADDY products are designed to incorporate features that make installation easier. nVent CADDY products are designed to have fewer parts, secure hardware and require fewer tools. The benefits of individual products are multiplied when used together as a system solution.

Products to fit most applications including:

**ELECTRICAL • DATACOM • FIRE SPRINKLER • MECHANICAL  
HVAC • PLUMBING • ROOFTOP • SEISMIC BRACING**



# HVAC and Refrigeration Solutions



From reliable environment control to proper air and fluid circulation, HVAC systems are critical to today's commercial and industrial buildings.

nVent CADDY is proud to support HVAC installers from end-to-end with our innovative solutions.

Whether you need to upgrade an existing installation or install comfort systems into new construction, nVent CADDY has the solutions to get the job done safe, fast, and easy.

## FEATURES:

- Quick and easy installation
- Lower total installed cost
- Solutions for wet and dry side specialties, including VRF applications
- Products compliant with SMACNA, ASCE and IMC standards



Buy American Compliant Solutions are available.

## HVAC Industry Leadership

nVent CADDY is proud to support and contribute to the HVAC industry, ensuring a safe and compliant future for contractors and installers. nVent CADDY is affiliated with many leading industry organizations, contributing thought leadership, real-world engineering expertise and code and compliance insights.



## Online Education, Keeping You Up-to-Date

**nVent CADDY is committed to industry leadership through video content and educational courses.**

[Watch our HVAC product and install videos](#) | [Sign up for our online learning courses](#)





# Engineering and Support – Seismic Bracing

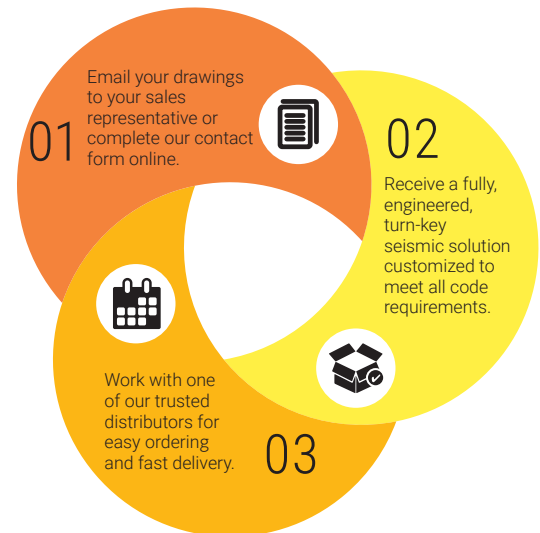


The nVent CADDY team makes seismic simple by:

- Working with you to design a turn-key, fully engineered, complete bracing system that meets your needs
- Identifying the appropriate products from the broad offering
- Offering compatible fixing, fastening and support products
- Explaining installation techniques and tips to meet the evolving codes and standards requirements

From design to construction to inspection, we keep our process transparent to ensure a full understanding of the final bracing installation, whether it requires cable or rigid bracing solutions.

**We make seismic simple.**

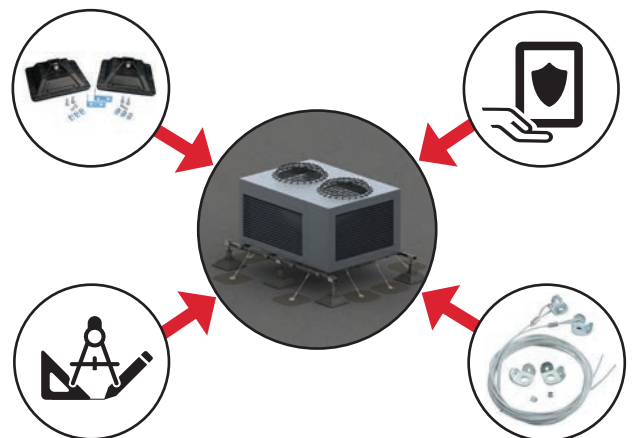


# Engineering and Support – Wind Anchoring

Wind anchoring meets ASCE 7 & IMC 301.15 standards

nVent CADDY makes rooftop anchoring simple – from engineering and system design, to premium, easy-to-use and install components.

- Engineering services for design and layout support, with PE-stamped drawings for all 50 states
- Industry-leading rooftop supports for a full range of applications
- Stainless steel cable bracing kits and solutions that allow for design flexibility
- Anchors for any substrate that work seamlessly with your rooftop system and ensure your warranty is preserved



# Rooftop Solutions

nVent CADDY Pyramid rooftop supports are a surface mounted solution for supporting equipment and lines on a variety of roof surfaces. They offer superior load distribution and dramatically reduce installation time by replacing slow, heavy, and labor-intensive methods.

These supports are specifically designed for rooftop applications with UV stabilization for long service life and unique materials that protect roof membranes.

The nVent CADDY Pyramid Rooftop Anchor System helps ensure the safety and protection of your rooftop mechanical, electrical, and HVAC equipment applications. The system fastens directly to the roof deck and secures equipment and systems in place.

## FEATURES:

- Install on most any roof surface - single ply, bituminous, metal and spray foam
- UV stabilized for long lasting performance
- Anchor system requires minimal roof membrane penetration

Products in grey are nVent CADDY innovative, time-saving solutions



Equipment Support Kits  
**PEK## / PEKLD##**



Strut-Based Supports  
**PSF##C**



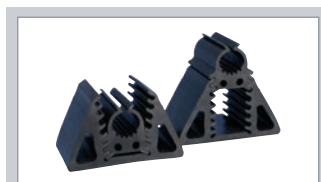
H-Frame Kits  
**PHK**



Crossovers & Walkways



Tool-Free Support Kits  
**PTF##**



Rubber-Based Supports  
**RPSE#H##**



Bridge Assemblies  
**PSB##A**

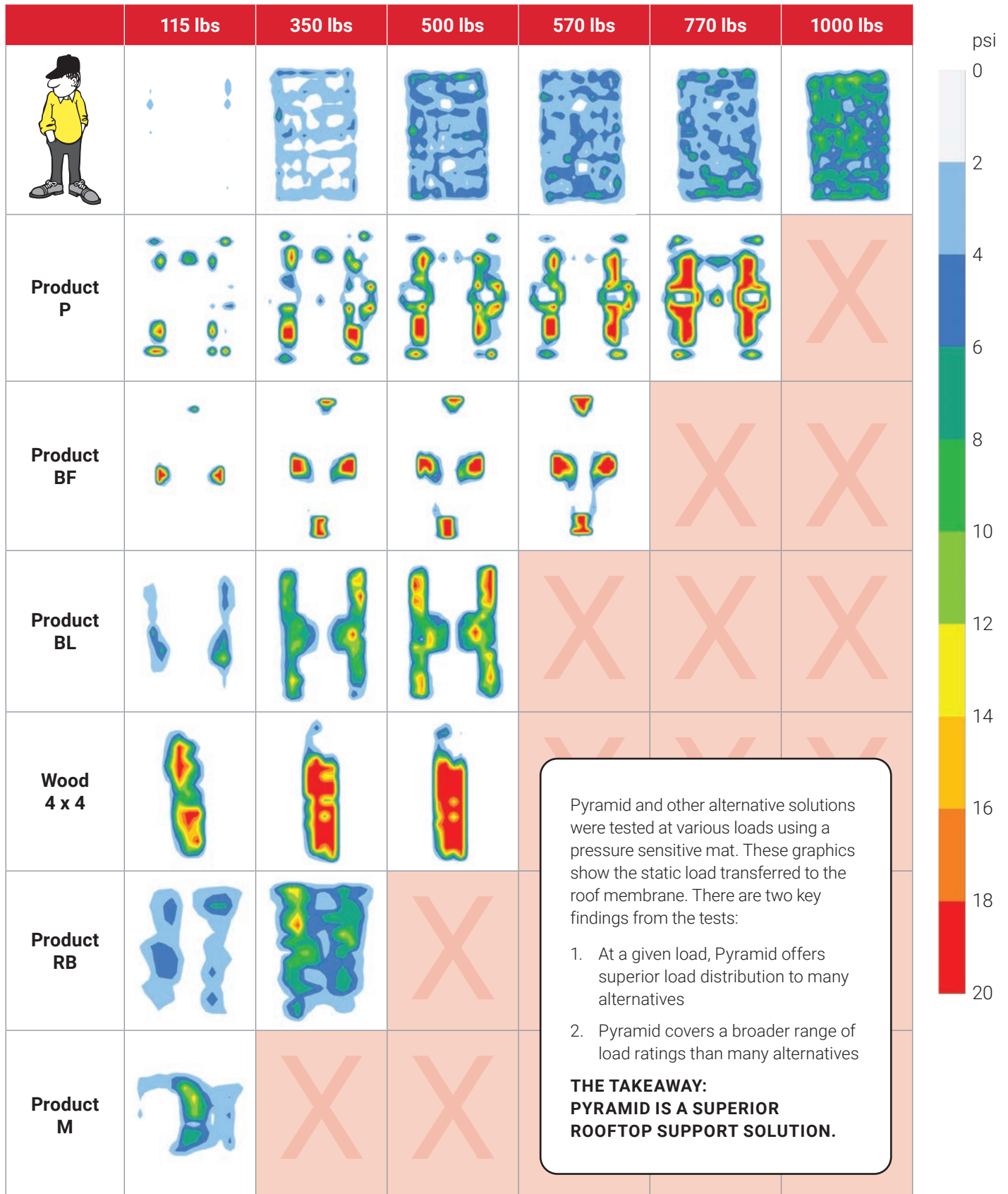



Roller-Based Supports  
**PRF#**

## Services Available

nVent CADDY's engineering team can assist you with your next roof layout project.





 Product does not support load ratings at this level

# Seismic Bracing Solutions

Earthquakes and similar events pose a direct risk to the ongoing operations of government, businesses, and public infrastructure. To protect against these risks, building and industry codes include requirements for the design and installation of seismic bracing for non-structural components, such as HVAC, fire sprinkler, mechanical, electrical and plumbing systems.

The nVent CADDY Seismic Bracing System was developed to keep these critical building systems operational after a seismic event. Our personalized Engineering Services provide building owners and contractors with optimized design layouts and support throughout the job.

## Rigid Bracing System



### Did you know?

We also offer Vibration Isolation Solutions (such as Spring Hangers, Spring Mounts, Pads, and Expansion Joints)



## STRUCTURAL & TRAPEZE ATTACHMENTS



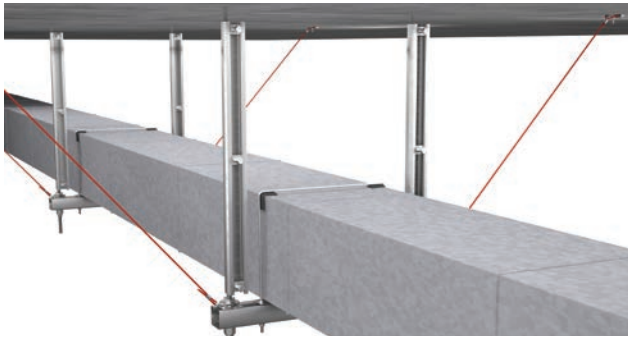
## PIPE ATTACHMENTS





# Seismic Bracing Solutions

## Cable Bracing System



Products in grey are nVent CADDY innovative, time-saving solutions

## CABLE



Cable Spool  
**CSB12CBL\*\***



Cable Spool  
**CSB18CBL\*\***



Cable Spool  
**CSB36CBL\*\***

Stainless Steel cable, Prefabricated kits, and additional finishes also available

## ATTACHMENTS AND ACCESSORIES



Crimping Sleeve  
**CSB##SLVB\*\***



No Pry Clip  
**CSBNPC##**



Universal Restraint Clip  
**CSBURC##\*\***



Universal Restraint Clip, Retrofit  
**CSBURCR##**

## ROD STIFFENERS



Pipe Rod Stiffener  
**CSBRS1**



Strut Rod Stiffener  
**CSBRS37EG**



Quick Clip Rod Stiffener  
**CSBRS#**

#### = multiple sizes available  
\*\* = Finish - ie EG, SS for Stainless

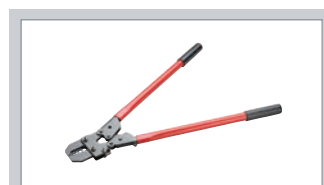
## CUTTING AND SWAGING TOOLS



Cable Cutter



Manual Swaging Tool  
**CSB12SBHS**



Multi-Size Manual Swaging Tool  
**CSB3346SB**



Battery-Operated Swaging Tool  
**CSBB121836**

Available for  
Size 12, 18, 36

Works with Brace  
Size 12

Works with Brace  
Size 12, 18, 36

Works with Brace  
Size 12, 18, 36



# Duct Hanging Solutions

Whether installing round or rectangular duct, nVent CADDY has installation and hanging methods that can make the job easier.

From traditional strap-based installation to innovative solutions that reduce time on-site – even flexibility to prefab some or all of the duct routing on the ground before raising it into place – nVent CADDY works with contractors and installers to make sure the products used will lead to a safer, faster and easier installation than the alternatives.

## Round Duct Hanging Solutions

Round ducts are increasingly seen as the most economical method for efficiently transporting air from today's high-pressure HVAC systems. With the nVent CADDY Speed Link system, long duct runs can be prefabricated with wire rope looped around the duct and held in place. Once on the jobsite, the assembly can be lifted and installed at structure with one of the end fittings attached to the wire rope.



### Did you know?

#### Tool-Free Installation

- Push/pull keyless release requires no tools to secure the system



#### Highly Adjustable

- Double-sided locking mechanism enables quick and simple height adjustment

#### Aesthetically Superior

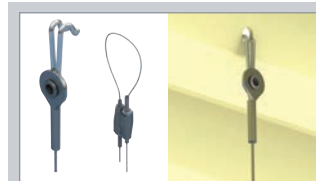
- Cable spread of 90 degrees allowing the device to be positioned closer to the load
- Low-profile locking device minimizes the visual impact



Speed Link SLK with Angle Bracket



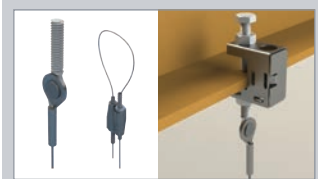
Speed Link SLK with Shot-Fire Bracket



Speed Link SLK with Decking Hook



Speed Link SLK With Hook



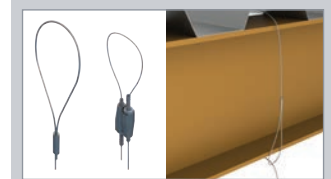
Speed Link SLK with Threaded Stud End



Speed Link SLK with Wedge Anchor



Speed Link SLK with Hammer-on Flange Clip



Speed Link SLK With Loop



Speed Link SLK Spool Kit



Speed Link SLK Locking Device



Wire Spool



Wire Rope Cutter



# Duct Hanging Solutions

Rectangular ducts remain a common solution when operating in tight spaces where height is a concern. Installers utilizing wire rope, have several options when installing rectangular duct.

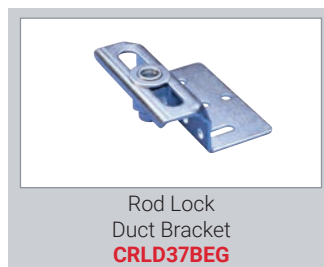
The new nVent CADDY Speed Link PD Duct Bracket Kit is an ideal solution that is designed to be directly attached to the duct and hung with wire rope, using the nVent CADDY Speed Link SLS System within a few seconds.

It can be used with 2 & 3 mm wire to adapt to the needs of the installers. Its unique design prevents the wire rope from being in direct contact and from damaging the duct, making it an ideal HVAC solution.




Ducts can also be prefabricated with threaded rod, two ways: attaching directly to the duct or supporting the duct via a strut trapeze (see Trapeze Solutions page). In both scenarios, nVent CADDY Rod Lock “push-to-install” technology enables easy installation of preassembled components.

When attaching directly to the duct, installers can fasten Rod Lock Duct Brackets into the side of the ductwork. Threaded rods can be preinstalled at the structure, allowing the fabricated duct assemblies to be easily lifted and locked in place.



Products in grey are nVent CADDY innovative, time-saving solutions

### = multiple sizes available  
\*\* = Finish – ie EG, SS for Stainless



nVent CADDY Rod Lock push-to-install technology simplifies duct prefabrication and improves profitability. Use the product selector below to identify the best Rod Lock product for your prefab process.  
<https://go.nVent.com/air-duct-rod-lock-flow-chart.html>



# Duct Hanging Solutions

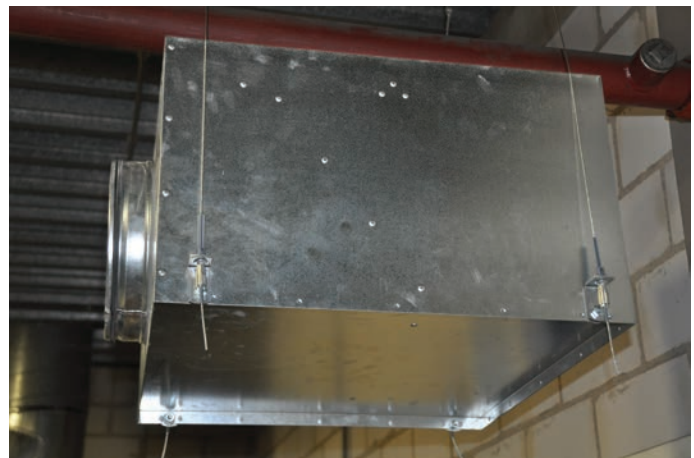
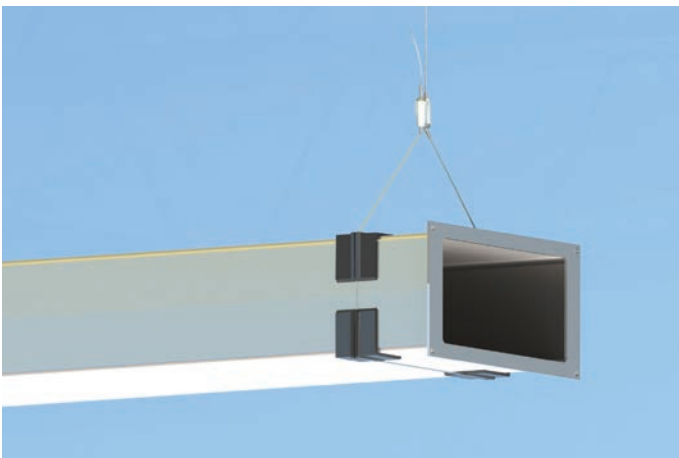


## Did you know?

nVent CADDY Speed Link and Rod Lock solutions are ideal for prefabricating Fan Coil Units, VAV Systems, and Chill Beams



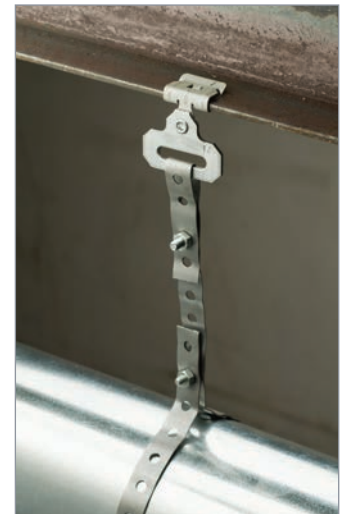
### = multiple sizes available  
\*\* = Finish - ie EG, SS for Stainless



## Traditional Duct Hanging Solutions

For the more traditional strap hanging installations, nVent CADDY also offers several structural attachments that are Safe, Fast, and Easy.

Quickly attach to multiple surfaces including steel beams, concrete, and decking.



90° Strap Hanger with Flange Clip  
**MSR##**



Inline Strap Hanger with Flange Clip  
**MSS##**



Strap Hanger with Shot-fire Bracket  
**MSSSF**

# Hanging Solutions

Traditional hangers have often been difficult to differentiate between brands, historically. Products on the market adequately hold pipe and other systems, but have not undergone any innovation in decades.

However, the nVent CADDY product development team is always working to make products faster, safer and easier to install.

Our family of products offers unique benefits to the installer and together they are designed to be the most comprehensively innovative offering on the market, lowering total installed cost.

## SINGLE PIPE HANGING



Standard Duty  
Loop Hanger  
**115####EG**



Loop Hanger  
for Copper Tube  
**101####CP**



Drop-in  
Loop Hanger  
**DH####EG**



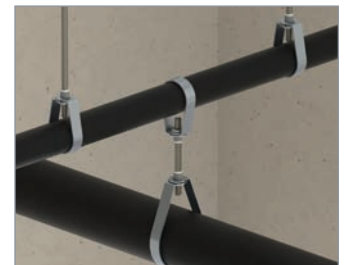
Clevis Hanger  
**401####EG Std Duty**  
**410####EG Lite Duty**



Clevis Hanger  
for Copper Tube  
**402####CP**



Heavy Duty  
Trapeze Loop Hanger  
**100T####EG**



Split Ring Hangers  
**455####\*\* PL & EG**  
**456####CP Copper**



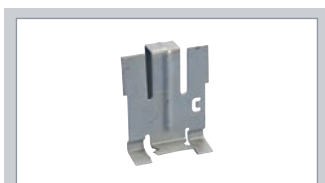
MACROFIX PLUS  
LF Low-Friction  
**430####EG**



SUPERFIX  
Standard Duty  
**454###**



## AIR DIFFUSERS



Lay-in Support Clip,  
Straight Lip  
**515**



Lay-in Support Clip,  
Straight/Upturned Lip  
**515A / 515AWHA**



Seismic  
Fixture Clamp  
**SLCLT###**

Products in grey  
are nVent CADDY  
innovative, time-  
saving solutions



# Trapeze Solutions



nVent CADDY has a solution no matter how you choose to manufacture and install trapeze runs. From traditional methods manufactured on site with strut, rod and strut nuts to push-to-install technology that simplifies prefabrication, nVent CADDY can help.

The focus on Safe, Fast, and Easy products from the experts at nVent CADDY makes you more profitable and allows you to win more jobs. If you see an opportunity to improve your process but just cannot find that one product that will make it happen, contact your nVent CADDY Business Development Manager for help in identifying the right solution for you.

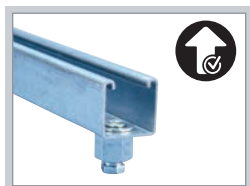


nVent CADDY Rod Lock push-to-install technology simplifies trapeze prefabrication and improves profitability. Use the product selector below to identify the best Rod Lock product for your prefab process. [go.nVent.com/rodlock-pipe-conduit-flowchart.html](http://go.nVent.com/rodlock-pipe-conduit-flowchart.html)

## STRUT SOLUTIONS



Strut Channel Type A  
**A12H1000PG**



Rod Lock Precut Strut  
**CRLP###L##**



Telescoping Strut  
**TSR1220\***

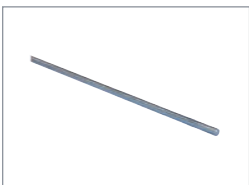


Speed Link SLS Trapeze Kit  
**TSR1220SLS3**



Strut End Cap  
**ADK421##**

## HANGING & HARDWARE SOLUTIONS



Threaded Rod  
**050###EG**



Strut Nut with Spring, Channel Type A  
**SPRA###EG**



Rod Lock Strut Nuts  
**CRLS & \*QCN**



Speed Link Wire spool  
**SLC#L####SP**



Speed Link SLS Locking Device  
**SLS#C50**

## PIPE TO STRUT SOLUTIONS



Universal Strut Clamp, for Copper Tube  
**USC###BR**



Cushion Clamp, Insulated Strut Clamp  
**CCC###**



Break-apart Strut Clamp, for Copper Tube  
**COPC####CP**



Swift Clip Twist-in Strut Clamp  
**TSMI####**



Swift Clip Twist-in Strut Clamp  
**TSM####**






# Trapeze Solutions



Retrofit installations and service contracts are valuable ongoing revenue streams. Retrofit and service solutions from nVent CADDY keep your service segment profitable through product innovation. nVent CADDY safe, fast, and easy products are a perfect fit for service trucks that need to be ready for anything when they walk onto a job. Product features that make it quick and easy to add trapeze tiers or run new lines on existing installations gets your service technicians off the job quicker meaning more jobs completed and higher revenue.

Contact your nVent CADDY Business Development Manager to learn more about product solutions we offer for retrofit and service work.

## SERVICE SOLUTIONS



Swift Clip Twist-on Rod Attachment  
**TRC###**



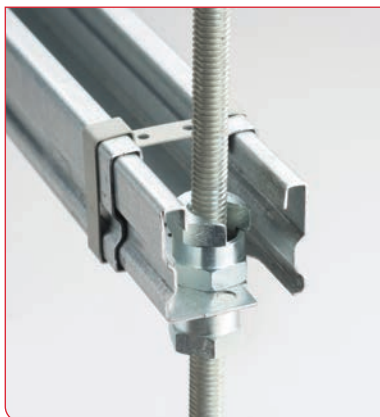
Retrofit Telescoping Strut  
**TSR1220R**



Retrofit Trapeze Attachment Kit  
**ISSPK**



Retrofit Split Nuts  
**SN## & SNSW##**



**Did you know?**

25 of the TSR1220R in just one 12x14 inch box is equivalent to 40 feet of strut.

Telescoping strut in combination with split nuts allows you to add a trapeze tier in under 1 minute.

Carry a box in service trucks and always be prepared to add new levels on existing trapeze.

Products in grey are nVent CADDY innovative, time-saving solutions

### = multiple sizes available  
\*\* = Finish - ie EG, SS for Stainless



# Structural Attachment Solutions

Ideal for any type of substrate, nVent CADDY structural attachments and fasteners ensure a time-saving installation with a comprehensive product lineup that has been created with the contractor in mind.

Easily install your HVAC system components to beams, decks, walls, ceilings or any other structure with Safe, Fast, and Easy connections.



I-Beam



Beam Concrete



Beam Wood



C Purlin



Z Purlin



Concrete Slab



Metal Decking Solution



Decking Concrete

## IBEAM ATTACHMENT



Stamped Beam Clamp, Top Mount  
**SBC037**



Universal Beam Clamp  
**300#####**



Universal Beam Clamp, Wide Mouth  
**310#####**



Beam Clamp with BC15 Swivel  
**BC101500EG**



Rod Lock Beam Clamp  
**CRLB37EG**



Rod Lock Beam Clamp  
**CRLB50EG**



Hammer On Rod to Flange Clips



C-Clamp for Strut and Rod  
**200RS###**

## SIDE / CENTER BEAM ATTACHMENT



Steel Side Beam Attachment  
**325#####**



Malleable Iron Side Beam Attachment  
**327#####**



Threaded Steel Side Beam Attachment  
**328#####**



Threaded Steel Side Beam Attachment  
**3290037EG**



Steel Eye Socket Rod Hanger  
**037#####EG**



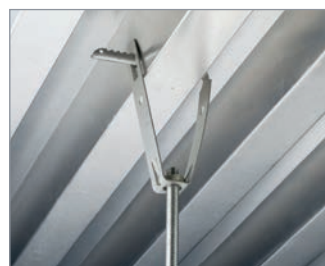
Offset Steel Eye Socket Rod Hanger  
**0380037EG**



Rod Lock L-Bracket  
**CRLL37EG**



Adjustable Center-Load Beam Clamp Kit  
**360#####PL**





# Structural Attachment Solutions

## CEILING & WALL ATTACHMENT



HangerMate®  
Horizontal Mount Screw  
**HMZH##**



HangerMate®  
Vertical Mount Screw  
**HMZG##**



Rod Lock  
Anchor Screw  
**CRLA37EG**



Rod Lock Plywood form  
Preset Anchor  
**CRLW##EG**



Anchor Bolts /  
Anchor Screws /  
Drop-in Anchors



Wall or Ceiling Plates  
**365M#####**  
**365#####**



Standard Duty  
Welded Wall Bracket  
**352####PL**



Strut Cantilever Arm  
Type A, Slotted  
**KA25H####EG**

## DECK ATTACHMENT



Trapezoidal  
Deck Hanger  
**TDH**



Cellular Floor  
Deck Hanger  
**DH#TI**



Rod Lock Metal  
Deck Preset Anchor  
**CRLM##EG**



Rod Lock Metal  
Deck Preset Anchor Insert  
**CRLMIP**

## PURLIN ATTACHMENT



Multi-Purpose  
Purlin Clamp  
**PH#**



Multi-Purpose  
Purlin Clamp with Swivel  
**PHSW#**



Malleable Iron  
Purlin Clamp  
**315#####**

Products in grey are nVent CADDY innovative, time-saving solutions

## BAR JOIST ATTACHMENT



Truss-T Bar Joist  
Hanger, Bottom Chord  
**CTH####TC**



Truss-T Bar Joist  
Hanger, Bottom Chord  
**CTH####BC**



Rod Lock  
Bar Joist Hanger  
**CRLJ37EG**



Rod Lock  
Couplers  
**CRLC####**

## ACCESSORIES

Our powerful portfolio of brands:

**CADDY ERICO HOFFMAN RAYCHEM SCHROFF TRACER**



[nVent.com/CADDY](https://nVent.com/CADDY)