

PRODUCT INFORMATION PACKET

FASCO®

Model No: D1126

Catalog No: D1126

OEM Replacement Motor, 1/15 HP, 1 Ph, 60 Hz, 208-230 V, 1550/1300 RPM, 1 Speed, 3.3" Diameter, OAO



Regal and Fasco are trademarks of Regal Rexnord Corporation or one of its affiliated companies.

©2023 Regal Rexnord Corporation, All Rights Reserved. MC017097E

RegalRexnord



Nameplate Specifications

Phase	1	Output HP	1/15 Hp
Output KW	0.05 kW	Voltage	208-230 V
Speed	1550/1300 rpm	Service Factor	1
Frame	3.3	Enclosure	Open Air Over
Thermal Protection	Thermally Protected	Ambient Temperature	40 °C
Frequency	60 Hz	Current	1.10 A
Duty	Air Over	Insulation Class	B
UL	Recognized	CSA	Y
CE	N	Number of Speeds	1

Technical Specifications

Electrical Type	Shaded Pole	Starting Method	Across The Line
Poles	4	Rotation	Clockwise Shaft End
Mounting	Extended Studs	Drive End Bearing	Sleeve
Opp Drive End Bearing	Sleeve	Frame Material	Steel
Shaft Type	Flat	Overall Length	6.92 in
Frame Length	3.37 in	Shaft Diameter	0.313 in
Shaft Extension	3 in		
Connection Drawing	NA	Outline Drawing	71635755

This is an uncontrolled document once printed or downloaded and is subject to change without notice. Date Created:07/01/2023

4

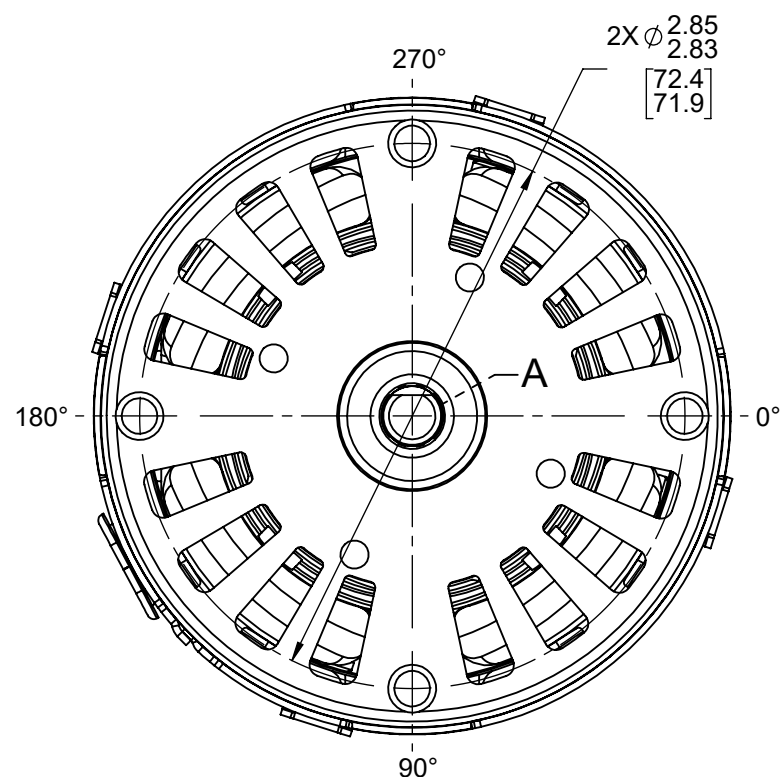
3

2

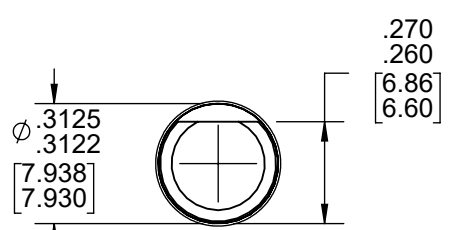
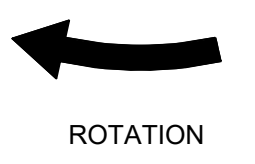
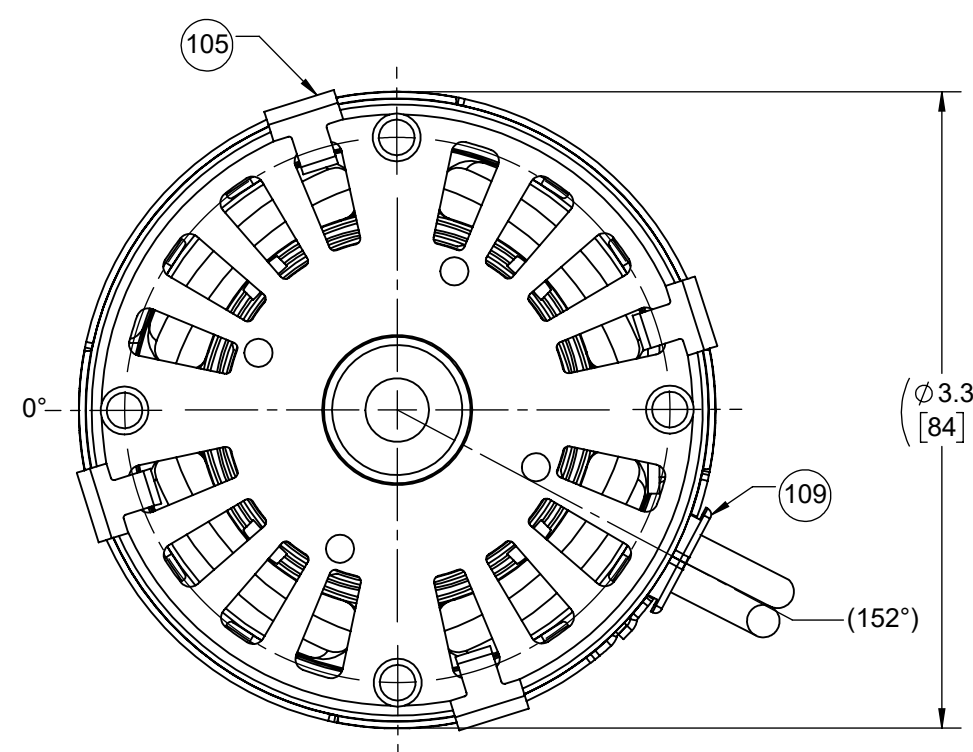
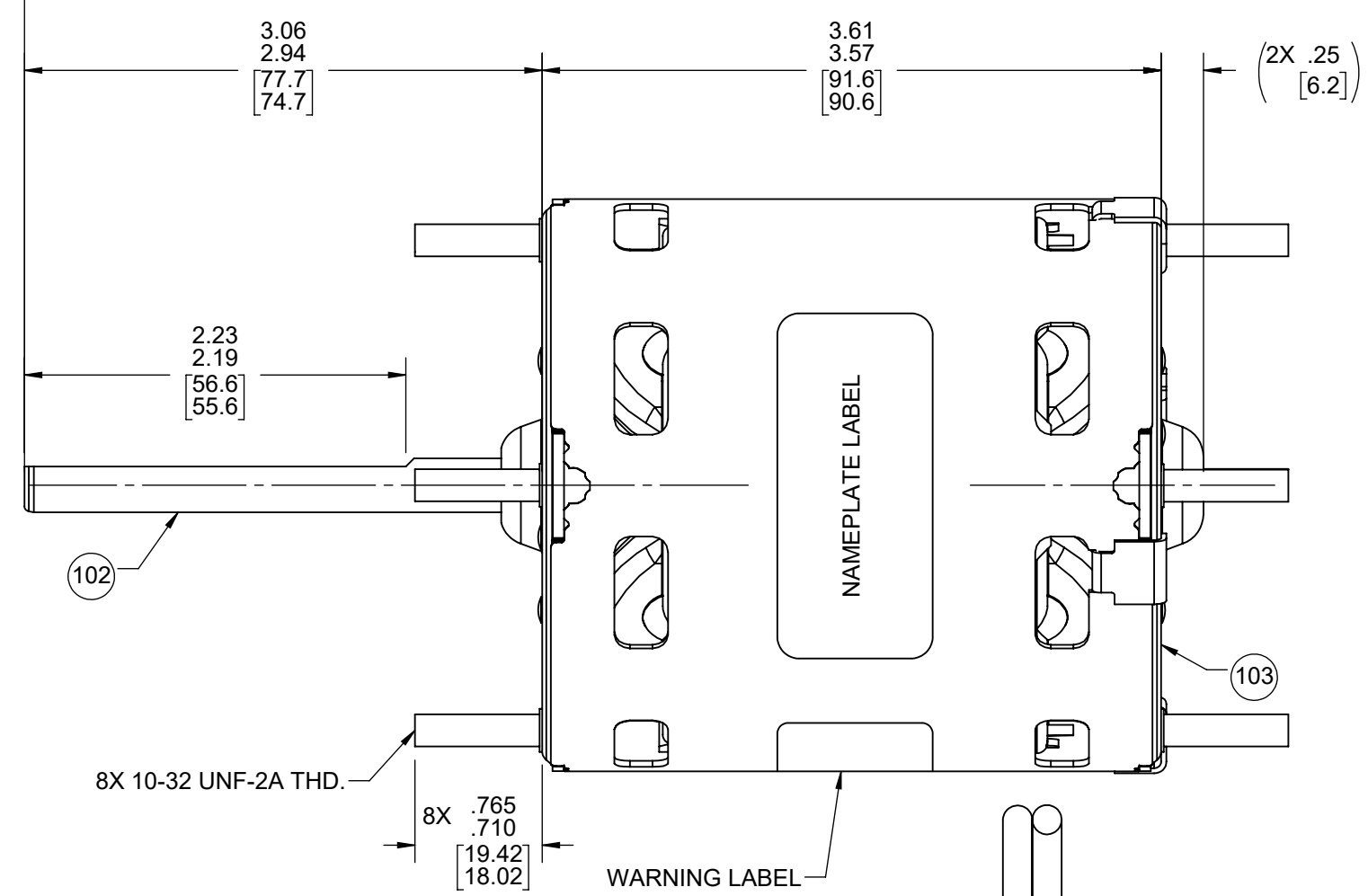
1

FRONT END

BACK END



ENDPLAY
 .030
 .010
 [.76]
 [.25]

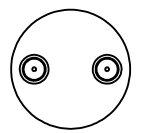


DETAIL A
SHAFT

CORDSET
 18 GA. 105°C 4/64 INSUL.
 PARALLEL PVC
 BLACK
 14.75/12.75 [374.7/323.9]

LYALL
M-2-43

LEADS TO BE
MEASURED TO HERE



61305568

00464071

- NOTES:
 1. MOTOR HAS 416 SS SHAFT.
 2. NO PACKAGING TAPE OVER CARTON LABEL.

SAFETY WARNING
 This motor must be grounded in accordance with local or national electrical codes to prevent possible injury due to electrical shock



AVERTISSEMENT DE SÉCURITÉ
 Ce moteur doit être fondée sur conformément à la réglementation locale ou national électrique codes pour prévenir d'éventuelles blessures en raison de choc électrique

FASCO™

Assembled In Mexico
 No. 71635755 TYPE U63B1 T.P. AO LR6319
 208-230 V 60/50 Hz Class B
 1.1 A 1550/1300 RPM 1/15 HP
 Model D1126
 Max Amb: 40° C

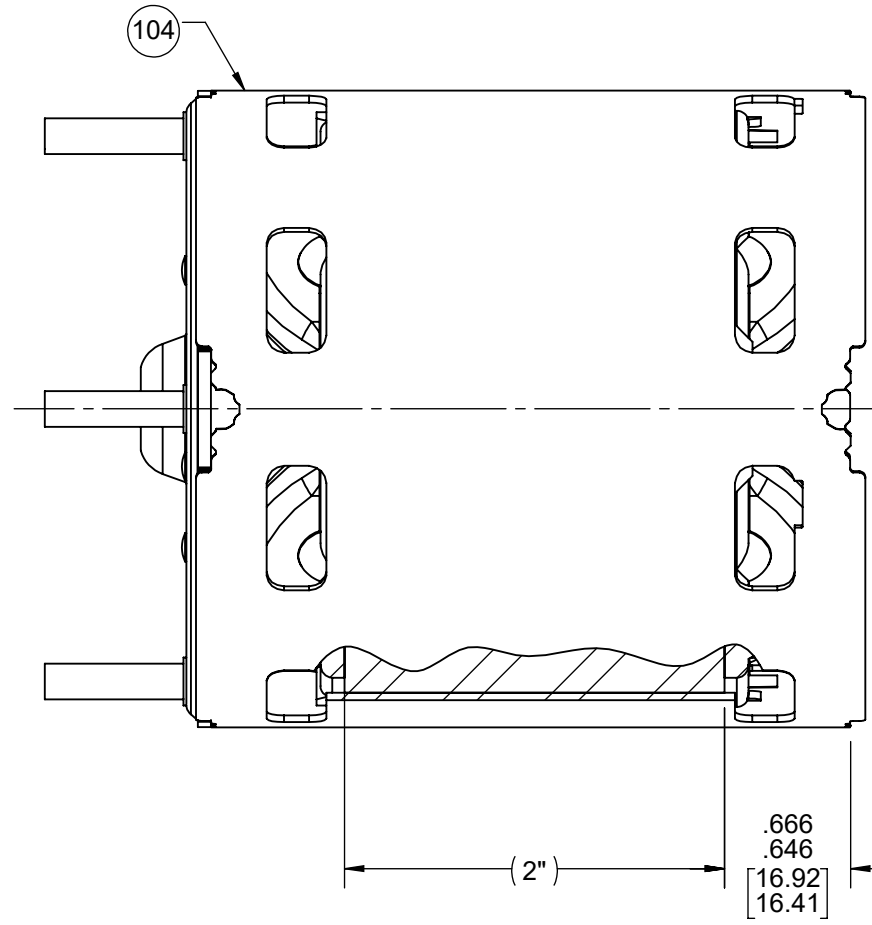
CUSTOMER:	FASCO DIST.	APPLICATION:	REFRIGERATION						
CUSTOMER PN:	D1126	MOTOR WEIGHT:	4.56 LBS.						
		ENVIRONMENT:	DRY						
MOTOR TYPE		REFERENCE SAMPLE							
SHADED POLE									
B	LA	FR	A	S	C	E	B	A	
00	63	30	V	08	OR	5	3	0	
TYPICAL PERFORMANCE AT 230 VOLTS 60 HZ									
MOTOR SPEED	IDLE			LOADED			LOCKED		BREAK
	RPM	AMP	WATT	IN OZ	RPM	AMP	WATT	IN OZ	IN OZ
	1775	.89	99	47.0	1600	1.04	151	18.5	1.57 217 57.0

DRAWING REVISION AE	REVISION BY KKM	REV DATE/DATE 06/23/2023	TOLERANCES (EXCEPT AS NOTED): DEC. INCH mm ANGLE	DRAWN BY MLS		Regal Beloit America, Inc.
REQUEST NUMBER ECR-0226559	APPROVED BY MLS	DATE 06/23/2023	.X ±0.1 [±3] .XX ±0.01 [±0.3] .XXX ±0.005 [±0.13] .XXXX ±0.0005 [±0.013]	DATE 3/17/2017		
REQUEST NUMBER DESCRIPTION ADDED WARNING LABEL LOCATION TO MOTOR DWG			REMOVE BURRS & BREAK SHARP EDGES: .003/.015 [.08/.38] X 45° CORNER FILLETS: R.02 [.5] MACHINED SURFACES: .125/ mm 3.2 INCH/mm	APPROVED BY SED	DESCRIPTION OUTLINE MOTOR ASSY	
COPYRIGHT (PER REVISION DATE) REGAL BELOIT AMERICA, INC. ALL RIGHTS RESERVED. PROPRIETARY AND CONFIDENTIAL INFORMATION - THIS DOCUMENT IS THE PROPERTY OF REGAL BELOIT AMERICA, INC. (OWNER) AND CONTAINS OWNER'S PROPRIETARY INFORMATION. ANY PERSON, CORPORATION OR OTHER FIRM RECEIVING IT IS DEEMED, BY RECEIVING IT, TO AGREE THAT IT, AND/OR ANY PART OF IT, SHALL NOT BE DISCLOSED TO ANY PERSON, CORPORATION OR OTHER ENTITY, DUPLICATED, AND/OR USED, EXCEPT AS EXPRESSLY APPROVED IN WRITING IN ADVANCE BY OWNER. THIS DOCUMENT SHALL BE RETURNED TO OWNER UPON REQUEST. IT MAY BE SUBJECT TO CERTAIN RESTRICTIONS UNDER APPLICABLE EXPORT CONTROL LAWS AND REGULATIONS.			mm DIMENSIONS IN [BRACKETS] ARE FOR REFERENCE ONLY	DATE 3/17/2017	MATERIAL	PROCESS/FINISH BLACK
				THIRD ANGLE PROJECTION	SIZE C	DRAWING NUMBER 71635755
						SHEET 1 OF 2

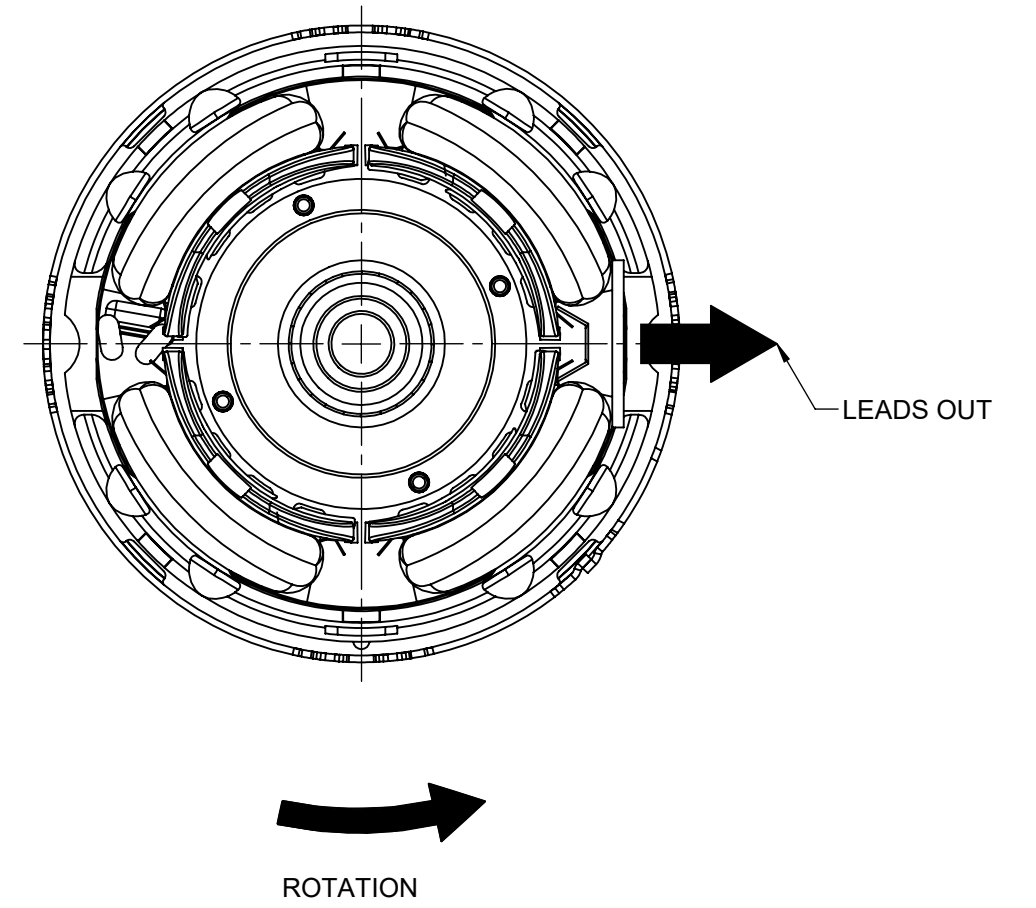
NOTES:

- 1. STAKE STATOR TO MAIN FRAME PER 88830264.
- 2. MAXIMUM TORQUE REQUIRED TO TURN MOTOR SHAFT IS 3/8 INCH-OUNCE.
- 3. MAKE-UP WASHERS ARE TO BE ADDED OR DELETED TO ACHIEVE REQUIRED ENDPLAY.

FRONT END



BACK END



PACKING SPECIFICATIONS

- 1. PACK 1 PER CONTAINER, 45 CONTAINERS PER LAYER, 6 LAYERS PER PALLET, 270 MAX. PER PALLET, PER 88834200.
- 2. PLACE FOAM RING ON WELD BOLTS OPPOSITE SHAFT END OF MOTOR AND FILLER TUBE OVER SHAFT. PLACE MOTOR IN CARTON SHAFT UP. CLOSE FLAPS AND TAPE.
- 3. CARTON LABELS MUST ALL FACE ONE DIRECTION TOWARD THE OPEN END OF THE PALLET. SEE 88834408.
- 4. PLACE (1) FLAT PAD BETWEEN EACH LAYER. PLACE ALL INSPECTION STICKERS AND WRITING ON FLAT PAD.
- 5. PLACE (4) NUTS IN PLASTIC BAG AND SECURE. PLACE BAG IN BOX.

DRAWING REVISION AE	REVISION BY KKM	REV DATE/@ DATE 06/23/2023	TOLERANCES (EXCEPT AS NOTED): DEC. INCH mm ANGLE	DRAWN BY MLS	Regal Rexnord Regal Beloit America, Inc.
REQUEST NUMBER ECR-0226559	APPROVED BY MLS	DATE 06/23/2023	.X ±0.1 [±3] ±1° .XX ±0.01 [±0.3] .XXX ±0.005 [±0.13] .XXXX ±0.0005 [±0.013]	DATE 3/17/2017	
REQUEST NUMBER DESCRIPTION ADDED WARNING LABEL LOCATION TO MOTOR DWG			REMOVE BURRS & BREAK SHARP EDGES: .003/.015 [.08/.38] X 45° CORNER FILLETS: R.02 [.5] MACHINED SURFACES: .125/ mm 3.2 INCH/mm	APPROVED BY SED	DESCRIPTION OUTLINE MOTOR ASSY
<small>COPYRIGHT (PER REVISION DATE) REGAL BELOIT AMERICA, INC. ALL RIGHTS RESERVED. PROPRIETARY AND CONFIDENTIAL INFORMATION - THIS DOCUMENT IS THE PROPERTY OF REGAL BELOIT AMERICA, INC. ("OWNER") AND CONTAINS OWNER'S PROPRIETARY INFORMATION. ANY PERSON, CORPORATION OR OTHER FIRM RECEIVING IT IS DEEMED, BY RECEIVING IT, TO AGREE THAT IT, AND/OR ANY PART OF IT, SHALL NOT BE DISCLOSED TO ANY PERSON, CORPORATION OR OTHER ENTITY, DUPLICATED, AND/OR USED, EXCEPT AS EXPRESSLY APPROVED IN WRITING IN ADVANCE BY OWNER. THIS DOCUMENT SHALL BE RETURNED TO OWNER UPON REQUEST. IT MAY BE SUBJECT TO CERTAIN RESTRICTIONS UNDER APPLICABLE EXPORT CONTROL LAWS AND REGULATIONS.</small>			mm DIMENSIONS IN [BRACKETS] ARE FOR REFERENCE ONLY	DATE 3/17/2017	MATERIAL
			THIRD ANGLE PROJECTION	PROCESS/FINISH BLACK	SIZE C