



Product Catalog

January 2023

AquaHeat

Radiant Heat & Snowmelt



AquaSeal

Pex Piping & Plumbing



Terre-Pex

Pre-insulated Pex-A Piping Systems





Integrating the best technologies by delivering optimal performance and efficiency.

AquaHeat

Radiant heating and snow melting products.

The widest selection of pex pipe under one banner anywhere Pex-A, Pex-B, PERT, and Multi-layer pipe for best features and price points. ProMix and ProLock manifolds and controls provide best distribution and control solutions.

AquaSeal

Pex piping and plumbing products.

Pex-A and Pex-B in Red, Blue and Natural colors in a variety of lengths make plumbing with pex fast and easy.

TerrePex

Pre-insulated Pex-A Piping System

Insulated Pex pipe systems for direct burial delivering energy with minimal BTU loss.

TECHNOLOGY INTEGRATION

Implementing new products and tools while embracing proven legacy products delivering what customers promise.

CONTROL AT ANY LEVEL

RESIDENTIAL, COMMERCIAL, INDUSTRIAL

Adding and removing energy precisely for maximum comfort and efficiency. Providing sufficient systems for fastest return on investment. Re-inventing processes while reducing energy consumption.

TIME HONORED FORWARD THINKING

While the concepts and tools are as old as time, new technologies serve to redefine and reapply known value for greater achievement of needs and goals.

DELIVERING TOMORROW'S TECHNOLOGY TODAY

Building with ComfortPro Systems means compatibility with the next generation of appliances not yet invented.

ComfortPro Systems LLC
phone: 800-968-8905
fax: 816-425-9824
orders@comfortprosystems.com

www.comfortprosystems.com



Table of Contents

AQUAHEAT

Pex-A Pipe	5
Pex-A Large Diameter SDR-9.....	6
Pex-B	7
Pentagol 5-Layer	8
Heat Pert	9
Transfer Plates & Panels	10
Supports and Fasteners	11-12
Brass Compression Fittings.....	13
Injection Controls/Valves.....	14
Snowmelt Controls	15
Promix Manifolds.....	16-21
Copper Manifolds.....	22-23
Controls.....	24
LoopCad	25

AQUASEAL

Pex-A Pipe	27
Pex-A Large Diameter	28
Pex-B Pipe.....	29
ASTM-F 1960 Brass Fittings.....	30-32
ASTM-F 1960 Plastic Fittings	33-34
ASTM-F 1807 Brass Fittings.....	35-38
Multiport Tees.....	39
ASTM-F 2159 Poly Fittings.....	40-41
Press Sleeves and Tools	42
Clamps and Tools.....	43

TERRE-PEX

Terre-Pex Insulated Pipes	44-46
Dust and Shrink Caps.....	47
Terre-Pex Accessories.....	48-50
Warranties.....	51

AquaHeat System Solution

Plumbing, heating and cooling systems work better when they work together. That's why ComfortPro delivers a total, integrated solution that's smart, simple, and as energy-efficient as possible.

Demand a better approach

Most others offer single solutions, only ComfortPro has the range of products - and depth of experience - to provide a thorough, solutions-focused approach that maximizes heating and cooling output while minimizing time and effort.

The ComfortPro line of products

Our business is to understand the unique needs of your job and deliver the very best system for it.

A better approach, A better system.

Benefits & Approvals

AquaHeat and AquaSeal uses only crosslinked polyethylene tubing. Known as PEX, crosslinked polyethylene offers distinct advantages over both metal piping materials and other plastic alternatives. Our pipe is virtually maintenance free. It is corrosion resistant, flexible, and remarkably clean. Long used worldwide, PEX has an outstanding and unblemished track record of quality performance. PEX's crosslinked molecular structure offers toughness and lasting durability. Our crosslinked polyethylene piping withstands temperatures ranging from below freezing to above the boiling point. Because it is pliable, a section of 1/2" pipe can be bent into a 3" (77mm) radius at 68 F (20 C) without affecting tubing integrity. The material is highly crush resistant and can be submerged in concrete or earth without any damage.

Approvals

AquaHeat and AquaSeal PEX pipe has been manufactured to ASTM F-876/F-877/F-2023/E-84/F1960/F-2080, NSF-61, ICC & CSA B137.5 and approved by CSA, IAPMO and ICBO for use with potable water systems. AquaHeat is certified for continuous use at pressures of 100 psi and temperatures up to 180 F.

AquaSeal Pex pipe meets the requirements of ASTM F-2023 chlorine standard. AquaSeal is certified for continuous use at pressures of 100psi and temperatures up to 180 F.

The AquaHeat brass fittings are not approved for potable water use and do not meet the lead free requirements of ASTM F1807 & CSA B137.5 standards.

AquaSeal brass fittings and valves meet the lead free requirements per U.S. Senate Bill S.3874 less than 0.25% Pb. NSF 61G, of ASTM F1807 & CSA B137.5 standards. Fittings with soldering or brazing end conform to ASME B16.22 and NPT male thread, NPSM female thread conform to ANSI/ASME B1.20.1.

The AquaSeal ProPlas plastic fittings meet the requirements of ASTM F-2159 & CSA B137.5 standards.

It is the sole responsibility of the installer to verify that the product meets local standards.

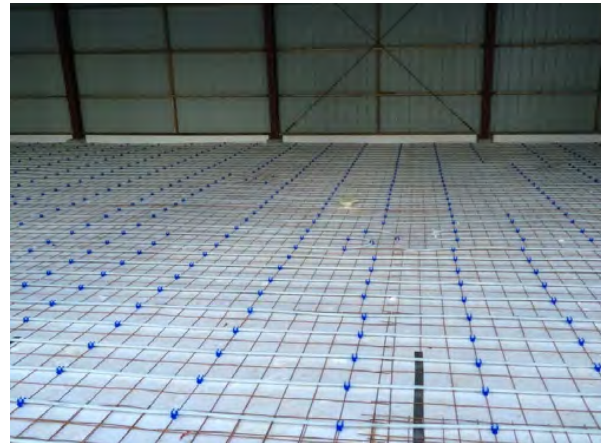
AquaHeat, AquaSeal and ComfortPro® Systems are registered trademarks.

PEX-A Piping 94900 series

AquaHeat Pex-A tubing is made using the Engel method. **The Engel method** is a hot cross-linking process, meaning the actual cross-linking takes place during the extrusion process when the base polyethylene is above its crystal melting temperature. The Engel method provides more precise control over the degree, consistency and uniformity of cross-linking. This means the tubing is evenly cross-linked, with no weak links within its molecular chains.

PEX-A Piping 94000 Series

Description	Part #	Qty
Pex-A 3/8" x 300' with O2 Diffusion Barrier	94312	300'
Pex-A 3/8" x 1000' with O2 Diffusion Barrier	94112	1000'
Pex-A 1/2" x 20' with O2 Diffusion Barrier	94205	20 / Bag
Pex-A 1/2" x 100' with O2 Diffusion Barrier	94005	100'
Pex-A 1/2" x 300' with O2 Diffusion Barrier	94305	300'
Pex-A 1/2" x 500' with O2 Diffusion Barrier	94505	500'
Pex-A 1/2" x 1000' with O2 Diffusion Barrier	94105	1000'
Pex-A 5/8" x 450' with O2 Diffusion Barrier	94419	450'
Pex-A 5/8" x 500' with O2 Diffusion Barrier	94519	500'
Pex-A 5/8" x 1000' with O2 Diffusion Barrier	94119	1000'
Pex-A 3/4" x 20' with O2 Diffusion Barrier	94222	10 / Bag
Pex-A 3/4" x 100' with O2 Diffusion Barrier	94102	100'
Pex-A 3/4" x 300' with O2 Diffusion Barrier	94322	300'
Pex-A 3/4" x 500' with O2 Diffusion Barrier	94522	500'
Pex-A 3/4" x 1000' with O2 Diffusion Barrier	94122	1000'
Pex-A 1" x 20' with O2 Diffusion Barrier	94228	5 / Bag
Pex-A 1" x 100' with O2 Diffusion Barrier	94128	100'
Pex-A 1" x 300' with O2 Diffusion Barrier	94328	300'
Pex-A 1" x 500' with O2 Diffusion Barrier	94528	500'



PEX-A Piping 94900 series SDR-9



Description	Part #	Qty
Pex-A 1-1/4" x 20' SDR-9 with O2 Diffusion Barrier	94942	5 / Bag
Pex-A 1-1/4" x 100' SDR-9 with O2 Diffusion Barrier	94940	100'
Pex-A 1-1/4" x 300' SDR-9 with O2 Diffusion Barrier	94943	300'
Pex-A 1-1/4" x 1000' SDR-9 with O2 Diffusion Barrier	94945	1000'
Pex-A 1-1/2" x 20' SDR-9 with O2 Diffusion Barrier	94952	5 / Bag
Pex-A 1-1/2" x 100' SDR-9 with O2 Diffusion Barrier	94950	100'
Pex-A 1-1/2" x 300' SDR-9 with O2 Diffusion Barrier	94953	300'
Pex-A 1-1/2" x 1000' SDR-9 with O2 Diffusion Barrier	94955	1000'
Pex-A 2" x 20' SDR-9 with O2 Diffusion Barrier	94962	5 / Bag
Pex-A 2" x 100' SDR-9 with O2 Diffusion Barrier	94963	100'
Pex-A 2" x 300" SDR-9 with O2 Diffusion Barrier	94964	300'
Pex-A 2" x 1000' SDR-9 with O2 Diffusion Barrier	94965	1000'



PEX-B Piping 93000 series

AquaHeat Pex-B pipes are manufactured from special HDPE resins. The cross-linking is performed in a state of the art Silane accelerator post extrusion resulting in an excellent and even cross-linking. The cross-linking renders the pipe improved mechanical process such as resistance to corrosion, pressures at high temperature, superb abrasion and chemical resistance. Product is coated with EVOH barrier which prevents oxygen from entering the system through the pipe wall. Products are manufactured in red color. AquaHeat Pex-B pipes can be used with the following ASTM fitting systems: F2159, F1807, F1960, and F2080.



Description	Part #	Qty
Pex-B 1/2" x 20' with O2 Diffusion Barrier	93205	50 / Bag
Pex-B 1/2" x 100' with O2 Diffusion Barrier	93005	100'
Pex-B 1/2" x 300' with O2 Diffusion Barrier	93305	300'
Pex-B 1/2" x 1000' with O2 Diffusion Barrier	93105	1000'
Pex-B 5/8" x 450' with O2 Diffusion Barrier	93419	450'
Pex-B 5/8" x 500' with O2 Diffusion Barrier	93519	500'
Pex-B 5/8" x 1000' with O2 Diffusion Barrier	93119	1000'
Pex-B 3/4" x 20' with O2 Diffusion Barrier	93222	25 / Bag
Pex-B 3/4" x 100' with O2 Diffusion Barrier	93102	100'
Pex-B 3/4" x 300' with O2 Diffusion Barrier	93322	300'
Pex-B 3/4" x 500' with O2 Diffusion Barrier	93522	500'
Pex-B 3/4" x 1000' with O2 Diffusion Barrier	93122	1000'
Pex-B 1" x 20' with O2 Diffusion Barrier	93228	5 / Bag
Pex-B 1" x 100' with O2 Diffusion Barrier	93128	100'
Pex-B 1" x 300' with O2 Diffusion Barrier	93328	300'
Pex-B 1" x 500' with O2 Diffusion Barrier	93528	500'

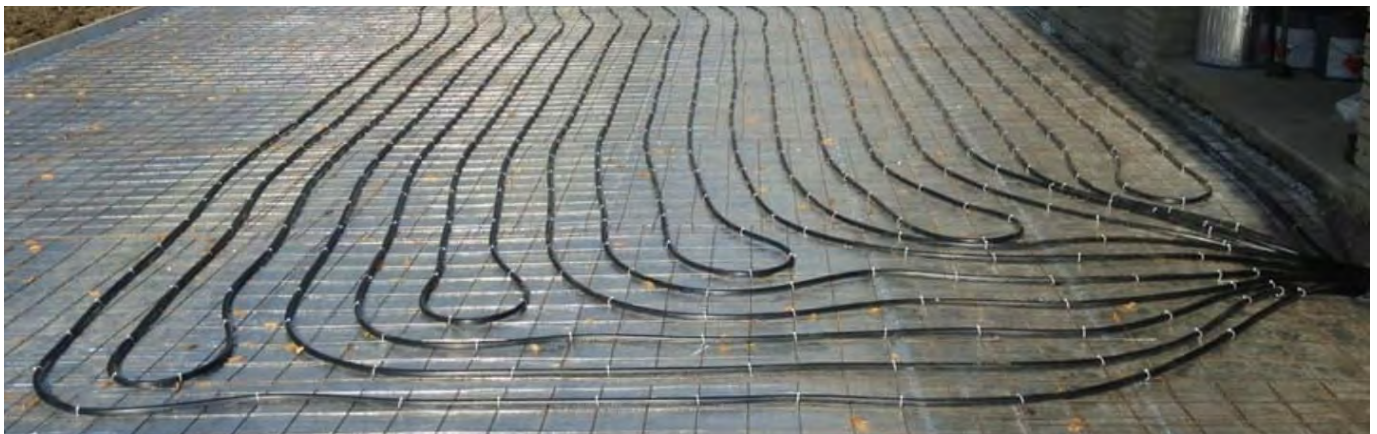


Pentagol is a five-layer Pex heating pipe with exceptional barrier properties and flexibility.

- Full UV Protection
- O2 Barrier is protected from scratching and abrasions
- O2 Barrier is protected from moisture
- Completely quiet with no expansion noise, ideal for wooden floors
- Ideal for snow melt, pole barns, high traffic areas during construction and extended exposure



Description	Part #	Qty
Pentagol 3/8" x 300' five layer w/ O2 Diffusion Barrier	95312	300'
Pentagol 3/8" x 1000' five layer w/ O2 Diffusion Barrier	95112	1000'
Pentagol 1/2" x 300' five layer w/O2 Diffusion Barrier	95305	300'
Pentagol 1/2" x 500' five layer w/O2 Diffusion Barrier	95505	500'
Pentagol 1/2" x 1000' five layer w/O2 Diffusion Barrier	95105	1000'
Pentagol 5/8" x 450' five layer w/ O2 Diffusion Barrier	95419	450'
Pentagol 5/8" x 1000' five layer w/O2 Diffusion Barrier	95119	1000'
Pentagol 3/4" x 20' five layer w/O2 Diffusion Barrier	95202	10 / Bag
Pentagol 3/4" x 100' five layer w/O2 Diffusion Barrier	95102	100'
Pentagol 3/4" x 300' five layer w/O2 Diffusion Barrier	95322	300'
Pentagol 3/4" x 500' five layer w/O2 Diffusion Barrier	95522	500'
Pentagol 3/4" x 1000' five layer w/O2 Diffusion Barrier	95122	1000'
Pentagol 1" x 20' five layer w/O2 Diffusion Barrier	95228	5 / Bag
Pentagol 1" x 100' five layer w/O2 Diffusion Barrier	95128	100'
Pentagol 1" x 300' five layer w/O2 Diffusion Barrier	95328	300'
Pentagol 1" x 500' five layer w/O2 Diffusion Barrier	95528	500'



Heat-PERT Piping 91000 Series

AquaHeat, Heat-Pert pipe is a 5-layer pipe made from Dowlex 2344 resin offering high temperature and pressure resistance without cross linking of the pipe. PERT stands for Poly Ethylene Raised Temperature and carries ratings up to 180F at 100psi. It has superior flexibility and can be used in both radiant and snow melt systems. It is manufactured to ASTM F2623 and is approved by NSF and CSA. Oxygen diffusion meets DIN 4726 which limits oxygen permeation through the pipe wall. "It is SDR9 Sized" pipe and can be used with any ASTM F1807 or F2159 fittings.

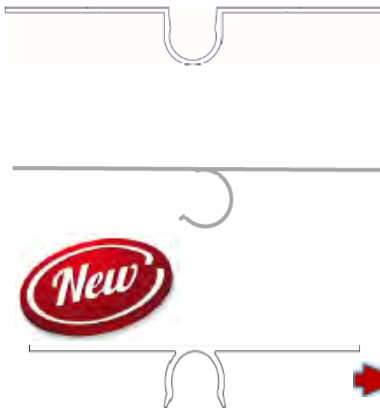


Description	Part #	Qty
Heat-PERT 3/8" x 300' w/O2 Diffusion Barrier	91312	300'
Heat-PERT 3/8" x 1000' w/O2 Diffusion Barrier	91112	1000'
Heat-PERT 1/2" x 100' w/O2 Diffusion Barrier	91005	100'
Heat-PERT 1/2" x 300' w/O2 Diffusion Barrier	91305	300'
Heat-PERT 1/2" x 1000' w/O2 Diffusion Barrier	91105	1000'
Heat-PERT 1/2" x 2000' w/O2 Diffusion Barrier	91205	2000'
Heat-PERT 5/8" x 300' w/O2 Diffusion Barrier	91319	300'
Heat-PERT 5/8" x 500' w/O2 Diffusion Barrier	91519	500'
Heat-PERT 5/8" x 1000' w/O2 Diffusion Barrier	91119	1000'
Heat-PERT 3/4" x 100' w/O2 Diffusion Barrier	91102	100'
Heat-PERT 3/4" x 300' w/O2 Diffusion Barrier	91322	300'
Heat-PERT 3/4" x 1000' w/O2 Diffusion Barrier	91122	1000'



Heat Transfer Plates

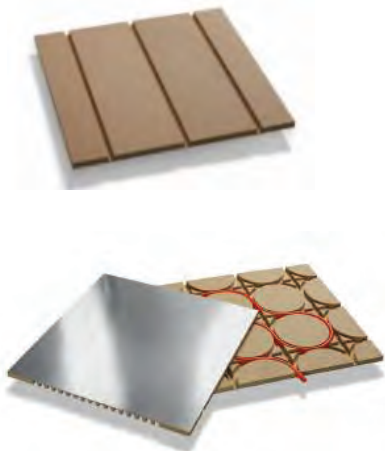
Heat Transfer Plates For Dry Below/Staple-Up installations of 3/8" & 1/2" Pex



Description	Part #	Qty
VersaPlate 1/2"x 24" Alum. Light Gauge	87008	50
VersaPlate 1/2"x 48" Alum. Light Gauge	87009	50
HeatTrak 3/8" x 4" x 48" Alum. Heavy Gauge	87022	20
HeatTrak 1/2" x 4" x 48" Alum. Heavy Gauge	87025	20
HeatFin 1/2"x 3 1/2" x 48" Alum. Med. Gauge	87024	20

ProPanel

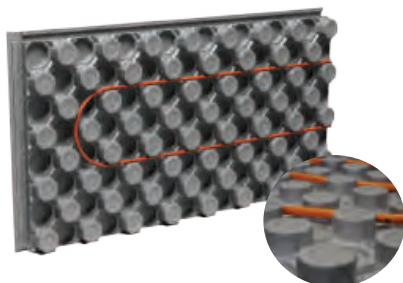
For dry above radiant heating systems. Available for 3/8" or 1/2" Pex pipe. Manufactured of water resistant MDF with an aluminum coating for more even heat distribution. Designed on 8" centers.



Description	Part #	Qty
ProPanel 24" x 24" x 3/4" 1/2" Straight Run	82434	1
ProPanel 24" x 24" x 3/4" 1/2" Ultimate Board	92434	1
ProPanel 24" x 24" x 5/8" 3/8" Straight Run	82458	1
ProPanel 24" x 24" x 5/8" 3/8" Ultimate Board	92458	1

Insulated Pex Panels

Engineered insulation panels for installation of radiant pipe in slab applications.



Description	Part #	Qty
R10 Insulated Pex Panel 24"x 48" 28.0 psi	102015	20
Accepts 3/8", 1/2", 5/8", 3/4" & 1" Pex or Pert, on 3" centers		
Water vapor barrier applied		

Description	Part #	Qty
InsulSnap Pex Panel 48"x 48"x 2" 25.0 psi	102515	Ea.
Accepts 1/2" & 5/8" Pex or Pert on 6" centers		
Maintains a 8.7 R value		



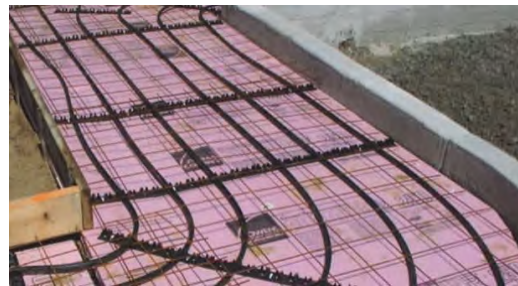
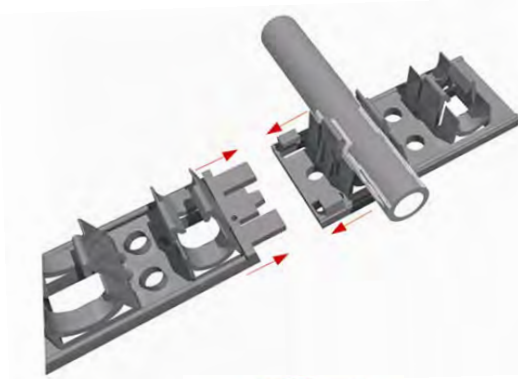
Supports / Fasteners



Description	Part #	Qty
3/8" - 1/2" PVC Conduit Elbows	86005	1
5/8" & 3/4" PVC Conduit Elbows	86020	1
3/8" Metal Bend Support	86114	1
1/2" Metal Bend Support	86115	1
5/8" Metal Bend Support	86116	1
3/4" Metal Bend Support	86117	1

Pipe Tracking

- Provides even spacing & heights
- Fastens to concrete, wood & foam board
- Accepts 3/8" - 3/4" Pex piping
- No wire or lastc ties
- Saves time and labor



Description	Part #	Qty
3/8", 1/2", 5/8", 3/4" x 39.5" Pipe Tracking	89122	1
Staples for Pipe Tracking	82050	500

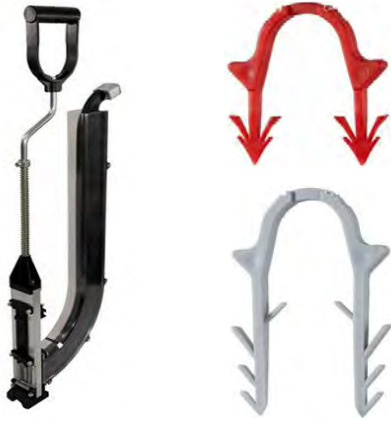
Tube Talon & Cable Ties



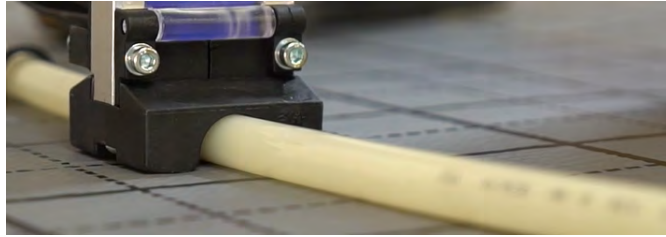
Description	Part #	Qty
1/2" Tube Talon w/Nail	12005	100
3/4" Tube Talon w/Nail	12022	100
1" Tube Talon w/Nail	12028	100
7" Nylon Cable Ties	89107	1000

Supports / Fasteners

MultiTacker & Staples



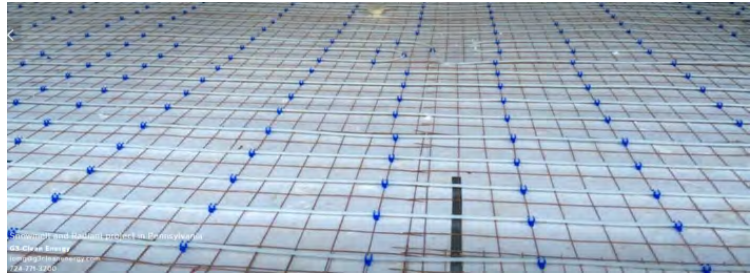
Description	Part #	Qty
Multi Tacker Tool	10221	1
1-1/2" Multi Tacker Staples	10222	300
2-5/8" Multi Tacker Staples	10223	300



Claw Clips



Description	Part #	Qty
Claw Clip Fixing Tool	10300	1
1/2" - 5/8" Claw Clip for 3/16" Wire Mesh	10302	400



Claw clips are used to fasten pex piping to wire mesh.

PRO PEX Un-Coiler 3/8", 1/2", 5/8", 3/4", & 1"



Description	Part #	Qty
Portable Pipe Un-Coiler	82001	1



Comes in hard plastic case and takes just a few minutes to put together.

* Brass Fittings

PEX Compression to Sweat Adapters



Description	Part #	Qty
1/2" PEX Compression x 1/2" FM Sweat Adapter	67105	25
1/2" PEX Compression x 3/4" FM Sweat Adapter	67505	25
5/8" PEX Compression x 3/4" FM Sweat Adapter	67119	25
5/8" PEX Compression x 3/4" Male Sweat Adapter	67019	25
3/4" PEX Compression x 3/4" Male Sweat Adapter	67022	25
1/2" PEX Compression x 3/4" FM Sweat Elbow	67705	25
5/8" PEX Compression x 3/4" FM Sweat Elbow	67319	25
3/4" PEX Compression x 3/4" FM Sweat Elbow	67322	25

PEX Compression to MIP Adapters



Description	Part #	Qty
3/8" PEX Compression x 1/2" MIP Adapter	68012	25
1/2" PEX Compression x 1/2" MIP Adapter	68005	25
5/8" PEX Compression x 3/4" MIP Adapter	68019	25
3/4" PEX Compression x 3/4" MIP Adapter	68022	25

PEX x PEX Compression Couplings



Description	Part #	Qty
3/8" PEX Compression Pipe Coupling	69012	25
1/2" PEX Compression Pipe Coupling	69005	25
5/8" PEX Compression Pipe Coupling	69019	25
3/4" PEX Compression Pipe Coupling	69022	25
1" PEX Compression Pipe Coupling	69028	25

*Note: For hydronic system use only. Not intended for potable water systems.

Injection Controls/Valves



Description	Part #	Qty
Thermostatic Head	57091	1
Thermostatic Head w/ capillary (104-158F)	57092	1
Thermostatic Head w/ capillary (68-122F)	57093	1

Zone Valves

Provides on/off or modulated flow control for baseboard, fan coils, manifold



Description	Part #	Qty
1/2" NPT Straight Zone Valve	62016	1
3/4" NPT Straight Zone Valve	62020	1
1" NPT Straight Zone Valve	62025	1

Thermostatic 3-Way Mixing Valves

Thermostatic mixing valve insures accurate temperature protection with varying input temperatures



Description	Part #	Qty
3/4" Thermostatic 3-Way Mixing Valve 10-140F 1.9cv	62934	1
1" Thermostatic 3-Way Mixing Valve 85-120 F 3cv	62940	1



Snowmelt Controls



Description	Part #	Qty
Dual Sensor Snowmelt Control Only	33550	1
Supply/Return Sensor for 33550 Modulating Mode (2 Sensors Required)	33555	1
Snow Melt Ground Sensor	33551	1
Cup for Ground Sensor	33556	1
Outdoor Air Sensor	33552	1
Snowmelt Relay with Intergrated Sensor	33565	1
Snowmelt Relay with 10' Remote Sensor	33570	1

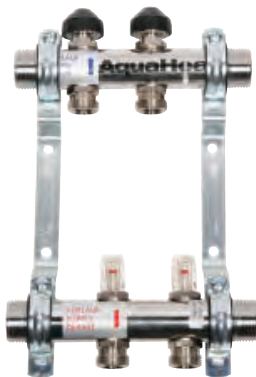
AquaHeat

ProMix 1" Stainless Steel modular manifolds operate with a maximum of 194-degree water temperature and 87 psi operating pressure with a flow meter range of 0-2 GPM. All manifolds come with flow meters with integrated shut off stems providing positive shut off for loop isolation during charging and testing. Total maximum flow rate 14 GPM.

AquaHeat



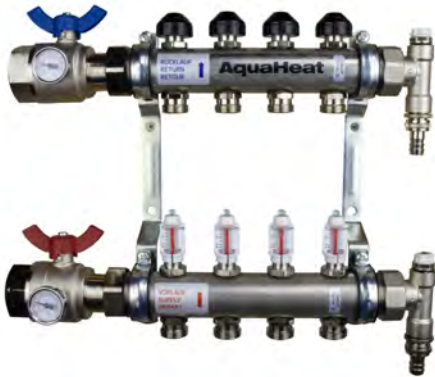
Description	Part #	Qty
2 Port 1" Stainless Steel Flow Balancing Manifold Kit (Valves, Gauges, Vents)	20132	1
3 Port 1" Stainless Steel Flow Balancing Manifold Kit (Valves, Gauges, Vents)	20133	1
4 Port 1" Stainless Steel Flow Balancing Manifold Kit (Valves, Gauges, Vents)	20134	1
5 Port 1" Stainless Steel Flow Balancing Manifold Kit (Valves, Gauges, Vents)	20135	1
6 Port 1" Stainless Steel Flow Balancing Manifold Kits (Valves, Gauges, Vents)	20136	1
7 Port 1" Stainless Steel Flow Balancing Manifold Kit (Valves, Gauges, Vent)	201307	1
8 Port 1" Stainless Steel Flow Balancing Manifold Kit (Valves, Gauges, Vents)	201308	1
9 Port 1" Stainless Steel Flow Balancing Manifold Kit (Valves, Gauges, Vents)	201309	1
10 Port 1" Stainless Steel Flow Balancing Manifold Kit (Valves, Gauges, Vents)	201301	1



ProMix 1" Manifolds (only) 2013 Series

Description	Part #	Qty
2 Port 1" Stainless Steel Flow Balancing Manifold	20137	1
3 Port 1" Stainless Steel Flow Balancing Manifold	20138	1
4 Port 1" Stainless Steel Flow Balancing Manifold	20139	1
5 Port 1" Stainless Steel Flow Balancing Manifold	201310	1
6 Port 1" Stainless Steel Flow Balancing Manifold	201311	1

ProMix 1-1/4" Stainless Steel modular manifolds operate with a maximum of 194-degree water temperature and 87 psi operating pressure with a flow meter range of 0-4 GPM. All manifolds come with flow meters with integrated shut off stems providing positive shut off for loop isolation during charging and testing. Total maximum flow rate 21 GPM.



Description	Part #	Qty
2 Port 1-1/4" Stainless Steel Flow Balancing Manifold Kit (Valves, Gauges, Vents)	20152	1
3 Port 1-1/4" Stainless Steel Flow Balancing Manifold Kit (Valves, Gauges, Vents)	20153	1
4 Port 1-1/4" Stainless Steel Flow Balancing Manifold Kit (Valves, Gauges, Vents)	20154	1
5 Port 1-1/4" Stainless Steel Flow Balancing Manifold Kit (Valves, Gauges, Vents)	20155	1
6 Port 1-1/4" Stainless Steel Flow Balancing Manifold Kits (Valves, Gauges, Vents)	20156	1
7 Port 1-1/4" Stainless Steel Flow Balancing Manifold Kit (Valves, Gauges, Vent)	201507	1
8 Port 1-1/4" Stainless Steel Flow Balancing Manifold Kit (Valves, Gauges, Vents)	201508	1
9 Port 1-1/4" Stainless Steel Flow Balancing Manifold Kit (Valves, Gauges, Vents)	201509	1
10 Port 1-1/4" Stainless Steel Flow Balancing Manifold Kit (Valves, Gauges, Vents)	201501	1



ProMix 1 1/4" Manifold (only) 2015 series

Description	Part #	Qty
2 Port 1-1/4" Stainless Steel Flow Balancing Manifold	20157	1
3 Port 1-1/4" Stainless Steel Flow Balancing Manifold	20158	1
4 Port 1-1/4" Stainless Steel Flow Balancing Manifold	20159	1
5 Port 1-1/4" Stainless Steel Flow Balancing Manifold	201510	1
6 Port 1-1/4" Stainless Steel Flow Balancing Manifold	201511	1

Manifold Control Module / By-Pass Set



The ProMix manifold extension controls the 2013 series manifold supply water temperature by mixing supply and return water and limits the supply temperature flow through the manifold for wooden flooring. The integrated pressure by-pass relief allows to operate the manifold directly off a high-temperature primary heating circuit or boiler with a maximum heating capacity of 51,000 BTU's.

- Connects directly to ProMix 2013 manifolds
- 190 degrees F maximum operating temperature
- 145 PSI maximum operating pressure
- 113-140 degrees F setting range
- Injection valve preset at 131 degrees F



The ProMix Differential pressure by-pass can be installed directly on to the ProMix 2013 1" manifolds and can be adapted to fit the 2015 1-1/4" manifolds. The manifold by-pass allows for constant pressure in individual manifold loops or zones independently of the number of open zone valves

Description	Part #	Qty
ProMix 1" Isotherm Manifold Control Module with Grunfos 451558 Pump	201344	1
ProMix 1"Differential Manifold By-Pass Set	201345	1

ProMix Manifold Cabinets



- Available in recessed and surface mount
- Made of 20-gauge galvanized steel with a durable white finish
- Cabinets are available to accommodate up to 12 port manifolds

Manifold Cabinets are shipped Unassembled to save space and reduce damage.



Description	Part #	Qty
Surface - Manifold Cabinet W20.8"x H27.2"x D4.3"- 6.3"	12421	1
Surface - Manifold Cabinet W26.8"x H27.2"x D4.3"- 6.3"	12431	1
Surface - Manifold Cabinet W27.2'x H27.2"x D4.3"- 6.3"	12451	1
Recessed - Manifold Cabinet W20.8"x H27.2"x D4.3"- 6.3"	13421	1
Recessed - Manifold Cabinet W26.8"x H27.2"x D4.3"- 6.3"	13431	1
Recessed - Manifold Cabinet W20.8"x H27.2"x D4.3"- 6.3"	13451	1

ProMix Manifold Accessories

ProMix Manifold Coupling Kits

Allows you to couple two or more manifolds together - Example if you need a 12 port manifold you could combine an eight and a four.



Description	Part #	Qty
1" Manifold Coupling Kit (2)	201359	1
1-1/4" Manifold Coupling Kit (2)	201558	1

ProMix Manifold Elbow Kits

Elbow kits allow for a compact 90-degree turn making it easy to connect vertical supply and return pipes.



Description	Part #	Qty
1" Manifold Elbow Kit (2)	201360	1
1-1/4" Manifold Elbow Kit (2)	201559	1

ProMix Manifold Extension Sets



Description	Part #	Qty
1" Manifold Extension Set w/Flow Meter Supply & Return (pair)	201342	1

ProMix End Sets w/ Hose adapter



Description	Part #	Qty
1" Manifold End Sets w/Garden Hose adt. (2)	201364	1
1-1/4" Manifold End Set w/Garden Hose adt. (2)	201565	1

ProMix Eurocone Cap



Description	Part #	Qty
3/4" Eurocone Blank Cap w/Gasket	201595	1

ProMix Manifold Accessories

ProMix End-Cap Kit



Description	Part #	Qty
1" Manifold End-Cap Kit	201361	1
1-1/4" Manifold End-Cap Kit	201561	1

ProMix Multi-Purpose End Kit



Description	Part #	Qty
1" Multi-Purpose End Kit w/Vent & Charging Port (2)	201363	1
1-1/4" Multi-Purpose End Kit w/Vent & Charging Port (2)	201563	1

ProMix Ball Valve Kit



Description	Part #	Qty
1" Ball Valve Kit (2)	201362	1
1-1/4" Ball Valve Kit (2)	201562	1

ProMix NPT Balancing Valve



Description	Part #	Qty
1" NPT Balancing Valve 1-13 GPM	201450	1
1-1/4" NPT Balancing Valve 2-21 GPM	201451	1

ProMix EuroCone Mini Ball Valve



Description	Part #	Qty
3/4" Eurocone Mini Ball Valve	201340	1

Provides positive shutoff and isolation of loops on Series 2013 & 2015 manifolds

ProMix Manifold Accessories

ProMix Manifold Fittings



Description	Part #	Qty
3/8" Pex Pipe to Manifold (2013 & 2015) Pair	201338	1
1/2" Pex Pipe to Manifold (2013 & 2015) Pair	201312	1
5/8" Pex Pipe to Manifold (2013 & 2015) Pair	201358	1
3/4" Pex Pipe to Manifold (2013 & 2015) Pair	201334	1
3/4" Eurocone Replacement O-ring	201300	10
3/4" Eurocone Coupling	201332	1
<hr/>		
1/2" F1960 Pex Pipe to Manifold (2013 & 2015) Pair	202312	1
5/8" F1960 Pex Pipe to Manifold (2013 & 2015) Pair	202358	1
3/4" F1960 Pex Pipe to Manifold (2013 & 2015) Pair	202334	1

ProMix Manifold Gasket



Description	Part #	Qty
1" Manifold Gaskets	201305	1
1-1/4" Manifold Gaskets	201520	1

ProMix Auto Air Vent



Description	Part #	Qty
3/8" BSP Auto Air Vent	201210	1

ProMix Manifold Replacement Parts



Description	Part #	Qty
Replacement Flow Indicator 0-2 GPM	201114	1
Replacement Flow Indicator 0-4 GPM	201214	1
Replacement Manifold Temperature Gauge	201502	1

Copper Manifolds

- Brazed Joint, Type L Copper Manifolds for Radiant Heat & Plumbing
- All Lead-Free Brazed Joints and Come w/ Limited 10 Year Warranty

CUT TO SIZE COPPER MANIFOLD



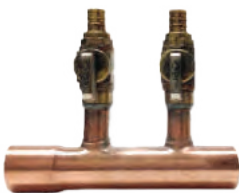
Description	Part #	Qty
72" x 1" Trunk w/24 - 1/2" Copper Ports on 3" Centers	72105	1
72" x 1-1/4" Trunk w/24 - Copper 1/2" Ports on 3" Centers	72205	1
72" x 1" Trunk w/24 - 3/4" Copper Ports on 3" Centers	72122	1
72" x 1-1/4" Trunk w/24 - 3/4" Copper Ports on 3" Centers	72222	1
72" x 1-1/2" Trunk w/24 - 3/4" Copper Ports on 3" Centers	72322	1
72" x 2" Trunk w/24 - 3/4" Copper Ports on 3" Centers	72422	1
72" x 1" Trunk w/24 - 1/2" F1807 PEX Ports on 3" Centers	72106	1
72" x 1" Trunk w/24 - 1/2" F1960 PEX Ports on 3" Centers	72107	1
72" x 1" Trunk w/24 - 1/2" F1960 Valved Ports on 3" Centers	72108	1

F1807 CRIMP MANIFOLD



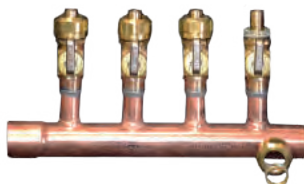
Description	Part #	Qty
1" 2 Port - Closed End w/ 1/2" F1807 Crimp Fitting	40132	1
1" 3 Port - Closed End w/ 1/2" F1807 Crimp Fitting	40133	1
1" 4 Port - Closed End w/ 1/2" F1807 Crimp Fitting	40134	1
1" 5 Port - Closed End w/ 1/2" F1807 Crimp Fitting	40135	1
1" 6 Port - Closed End w/ 1/2" F1807 Crimp Fitting	40136	1
1" 7 Port - Closed End w/ 1/2" F1807 Crimp Fitting	40137	1
1" 8 Port - Closed End w/ 1/2" F1807 Crimp Fitting	40138	1

F1807 CRIMP MANIFOLD WITH BALL VALVES



Description	Part #	Qty
1" 2 Port - Open Swt End w/ 1/2" F1807 Crimp Ball Valves	41132	1
1" 3 Port - Open Swt End w/ 1/2" F1807 Crimp Ball Valves	41133	1
1" 4 Port - Open Swt End w/ 1/2" F1807 Crimp Ball Valves	41134	1
1" 5 Port - Open Swt End w/ 1/2" F1807 Crimp Ball Valves	41135	1
1" 6 Port - Open Swt End w/ 1/2" F1807 Crimp Ball Valves	41136	1
1" 7 Port - Open Swt End w/ 1/2" F1807 Crimp Ball Valves	41137	1
1" 8 Port - Open Swt End w/ 1/2" F1807 Crimp Ball Valves	41138	1

COMPRESSION MANIFOLD WITH BALL VALVES



Description	Part #	Qty
1" 2 Port - Open Swt End w/ 1/2" Compression Ball Valves	41142	1
1" 3 Port - Open Swt End w/ 1/2" Compression Ball Valves	41143	1
1" 4 Port - Open Swt End w/ 1/2" Compression Ball Valves	41144	1
1" 5 Port - Open Swt End w/ 1/2" Compression Ball Valves	41145	1
1" 6 Port - Open Swt End w/ 1/2" Compression Ball Valves	41146	1
1" 7 Port - Open Swt End w/ 1/2" Compression Ball Valves	41147	1
1" 8 Port - Open Swt End w/ 1/2" Compression Ball Valves	41148	1

Copper Manifolds

F1960 EXPANSION MANIFOLD



Description	Part #	Qty
1" 2 Port - Open Sweat End w/ 1/2" F1960 Fitting	41152	1
1" 3 Port - Open Sweat End w/ 1/2" F1960 Fitting	41153	1
1" 4 Port - Open Sweat End w/ 1/2" F1960 Fitting	41154	1
1" 5 Port - Open Sweat End w/ 1/2" F1960 Fitting	41155	1
1" 6 Port - Open Sweat End w/ 1/2" F1960 Fitting	41156	1
1" 7 Port - Open Sweat End w/ 1/2" F1960 Fitting	41157	1
1" 8 Port - Open Sweat End w/ 1/2" F1960 Fitting	41158	1

F1960 EXPANSION MANIFOLD w/VALVES



Description	Part #	Qty
1" 2 Port - Open Sweat End w/ 1/2" F1960 Ball Valve	40152	1
1" 3 Port - Open Sweat End w/ 1/2" F1960 Ball Valve	40153	1
1" 4 Port - Open Sweat End w/ 1/2" F1960 Ball Valve	40154	1
1" 5 Port - Open Sweat End w/ 1/2" F1960 Ball Valve	40155	1
1" 6 Port - Open Sweat End w/ 1/2" F1960 Ball Valve	40156	1
1" 7 Port - Open Sweat End w/ 1/2" F1960 Ball Valve	40157	1
1" 8 Port - Open Sweat End w/ 1/2" F1960 Ball Valve	40158	1

DRAIN/VENT END CAPS



Description	Part #	Qty
1" Closed end cap w/ 1/8" & 1/2" FIP Taps for Vent & Drain	40100	1
1-1/4" Closed end cap w/ 1/8" & 1/2" FIP Taps for Vent & Drain	40125	1
1-1/2" Closed end cap w/ 1/8" & 1/2" FIP Taps for Vent & Drain	40150	1
2" Closed end cap w/ 1/8" & 1/2" FIP Taps for Vent & Drain	40200	1

GAUGE TEE



Description	Part #	Qty
1" Swt x 1/2" FIP Tee for Thermometer, Gauge or Drain	41100	1
1-1/4" Swt x 1/2" FIP Tee for Thermometer, Gauge or Drain	41125	1
1-1/2" Swt x 1/2" FIP Tee for Thermometer, Gauge or Drain	41150	1
2" Swt x 1/2" FIP Tee for Thermometer, Gauge or Drain	41200	1

- Full line of wired and wireless controls for Radiant and HVAC Industry
- Manufactured by one of the largest thermostat manufacturers in the world
- App integrated wireless thermostats and controls to compete in the tech savvy market
- Replaces all current CPS thermostats and controls

Wired Controls

Description	Part #	Qty
24 volt Thermal Actuator - Normally Closed (2-Wire)	46002	1
24 volt Thermal Actuator - Normally Closed with end switch (4-Wire)	46003	1
8 Zone 120 volt in & 24 volt Out Wiring Center	46008	1
24 volt Digital Non-Programmable Thermostat (3 Wire)	46010	1
Floor/Slab Temperature Sensor	46011	1
24 volt Underfloor Hydronic Auto Balancing Actuator	46012	1
24 volt Digital Programmable Thermostat (3wire)	46013	1
1 Zone Pump Control Center	46001	1
4 Zone Pump Control Center	46004	1
6 Zone Pump Control Center	46006	1

Wireless Controls

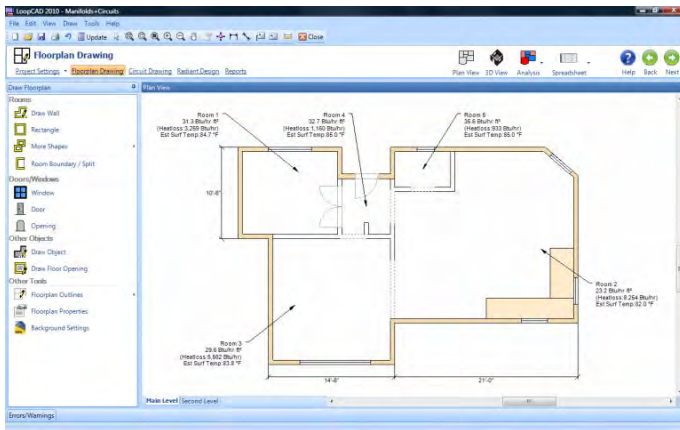
Description	Part #	Qty
Wireless Radiant Thermostat	46020	1
Wireless 1 Zone Pump Control Center	46021	1
Wireless 4 Zone Pump Control Center	46024	1
Wireless 8 Zone Wiring Center 120V in 24V out	46028	1
Wireless Radiator Valve Actuator - Hot Water	46027	1
Wireless 24 volt Zigbee Receiver	46029	1
Wireless Universal Gateway w/ USA Plug White	46025	1





Floor Plan Drawing

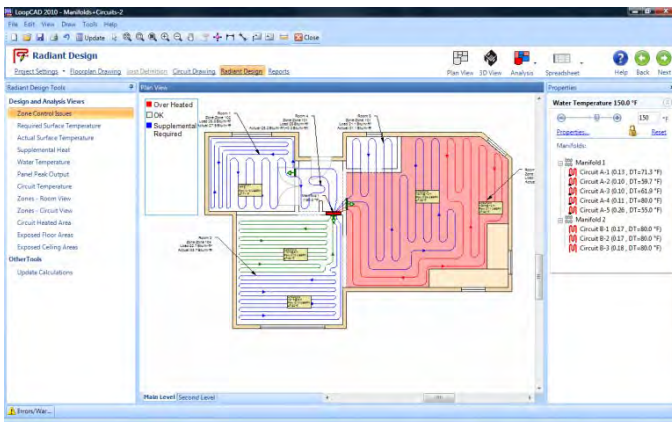
Creating floor plan drawings is very fast using the predefined rooms, doors, windows and other objects. Rooms can be resized by dragging the walls or corners, and are easily docked together to create complex floor plans. The room shapes can be quickly edited to create very complex shapes, and you can also use the freehand drawing tools to create more complex shapes. LoopCAD also allows you to import an existing AutoCAD, PDF, or scanned drawings to use as a template.



Hydronic Calculations

The hydronic calculations that are critical to your radiant system design are performed automatically. The Radiant Design view provides an easy way to analyze and optimize your design.

- panel heat outputs
- Surfaces temperatures
- Panel temperatures
- water temperatures - supply and differential
- Flow rates and head losses
- Contrallability issues

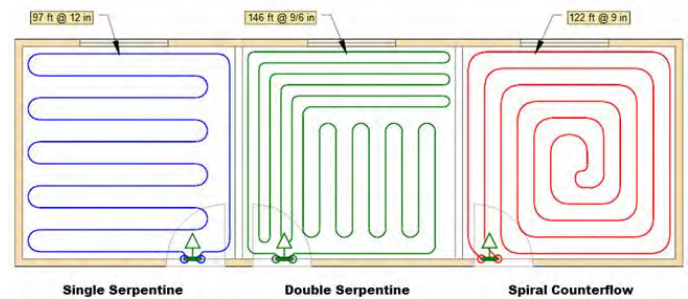


NEW in LoopCAD 2022

- Updated to the current ASHRAE Climate Data
- New Graphics Engin for improved performance & views in 2D & 3D
- many other New and Enhanced Features
- Still the **Premiere** software for professional quality circuit layout drawings for radiant heating systems!

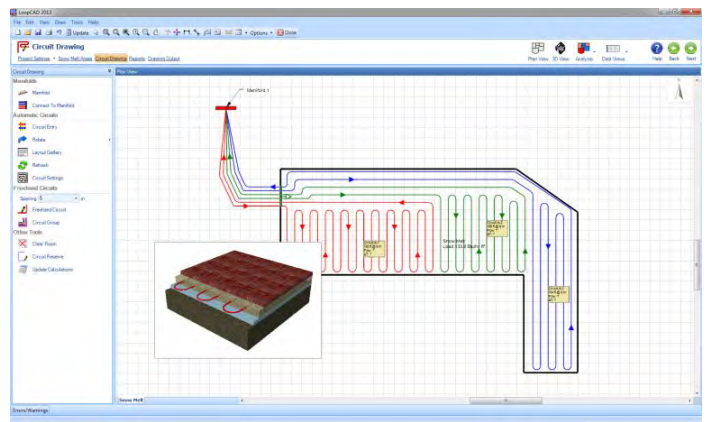
Automated Circuit Drawing

LoopCAD automatically generates circuits for the rooms in your project. Simply drop a Circuit Entry object where you want the circuits to start, and LoopCAD takes care of the rest. You can design around obstructions, like stairs, cabinets or kitchen islands. Easily edit the settings to change pattern type, rotation, number of circuits, or tube spacing options. Use the powerful Layout Gallery tool to quickly select the best pattern for your design. For room geometries too complex for automated circuits, the Freehand circuit tools let you quickly draw the exact circuits that you want.



Snowmelt Design

Snowmelt system design is now directly supported in LoopCAD. Draw snowmelt areas, generate circuits, calculate loads and temperatures in much the same way as you do for radiant heating systems. Calculations are based on ASHRAE methods.



ComfortPro

NEW PRODUCT BULLETIN

MANIFOLD CABINETS



Our New manifold cabinets are available in recessed or surface mount.

Made of 20 gauge galvanized steel with a durable white finish.

Cabinets are available to accommodate up to 12 port manifolds.

They are shipped unassembled to save space and reduce damage.



Part #	Description	Type	Unit
12421	Manifold Cabinet, Un-assembled, W20.8"x H27.2"x D4.3"- 6.3"	Surface	Ea.
12431	Manifold Cabinet, Un-assembled, W26.8"x H27.2"x D4.3"- 6.3"	Surface	Ea.
12451	Manifold Cabinet, Un-assembled, W27.2"x H27.2"x D4.3"- 6.3"	Surface	Ea.

Part #	Description	Type	Unit
13421	Manifold Cabinet, Un-assembled, W20.8"x H27.2"x D4.3"- 6.3"	Recessed	Ea.
13431	Manifold Cabinet, Un-assembled, W26.8"x H27.2"x D4.3"- 6.3"	Recessed	Ea.
13451	Manifold Cabinet, Un-assembled, W40.5"x H27.2"x D4.3"- 6.3"	Recessed	Ea.

AquaHeat
24000 S PECULIAR DRIVE, PECULIAR, MO 64078

AquaSeal
WWW.COMFORTPROSYSTEMS.COM

AquaMelt
1-800-968-8905

Terre-Pex

CPS 821

ComfortPro

NEW PRODUCT BULLETIN

INSUL-SNAP PEX PANEL




INSUL-SNAP ADVANTAGES

- Fast & Simple Installation
- 4'x 4' Panels
- 6" Spacing (6"-12" layout)
- 1/2" or 5/8" Piping
- Minimum Stapling
- Easily Trimmed
- Bonds Well to Concrete
- Maintains a 8.7 R-Value
- Competitive





Part #	Description	Unit
102515	4'x 4'x 2" Insul-Snap Pex Panel - 1/2" or 5/8" R8.7 25PSI	Ea.
10223	2 5/8" Multi Tacker Staples	300
10221	Multi-Tacker Tool	Ea.

AquaHeat
24000 S PECULIAR DRIVE, PECULIAR, MO 64078

AquaSeal
WWW.COMFORTPROSYSTEMS.COM

AquaMelt
1-800-968-8905

Terre-Pex

CPS 722

ComfortPro

NEW PRODUCT BULLETIN

ComfortPress Fittings





Part #	Copper Press x F1807 Clamp Adapters	Unit
37805	1/2" Press x 1/2" F1807 Adapter	30
37822	3/4" Press x 3/4" F1807 Adapter	20
37828	1" Press x 1" F1807 Adapter	15
37840	1 1/4" Press x 1 1/4" F1807 Adapter	8
37850	1 1/2" Press x 1 1/2" F1807 Adapter	5
37863	2" Press x 2" F1807 Adapter	3

Part #	Copper Press x F1960 Expansion Adapters	Unit
37905	1/2" Press x 1/2" F1960 Adapter	30
37922	3/4" Press x 3/4" F1960 Adapter	20
37928	1" Press x 1" F1960 Adapter	15
37940	1 1/4" Press x 1 1/4" F1960 Adapter	10
37950	1 1/2" Press x 1 1/2" F1960 Adapter	5
37963	2" Press x 2" F1960 Adapter	3

- F1807 x Copper
- F1960 x Copper
- Sizes 1/2" - 2" Pex
- Sizes 1/2" - 2" Copper
- Lead Free
- Compatible with popular Press Tools
- NSF/AMSO 61-G
- NSF/AMSO 372
- UPC Certified

AquaHeat
24000 S PECULIAR DRIVE, PECULIAR, MO 64078

AquaSeal
WWW.COMFORTPROSYSTEMS.COM

AquaMelt
1-800-968-8905

Terre-Pex

CPS 822

ComfortPro

NEW PRODUCT BULLETIN

HeatFin Transfer Plates





Part #	Description	Qty
87024	1/2" x 3-1/2" x 48" Alum. Med Gauge Heat Transfer Plate	20

AquaHeat
24000 S PECULIAR DRIVE, PECULIAR, MO 64078

AquaSeal
WWW.COMFORTPROSYSTEMS.COM

AquaMelt
1-800-968-8905

Terre-Pex

CPS 1022

PEX - A Pipe

Blue Pipe PEX-A 20000A series



Description	Part #	Qty
Blue Pex-A 1/2" x 20'	20205A	20/Bag
Blue Pex-A 1/2" x 100'	20105A	100'
Blue Pex-A 1/2" x 300'	20305A	300'
Blue Pex-A 1/2" x 1000'	20905A	1000'
Blue Pex-A 3/4" x 20'	20222A	10/Bag
Blue Pex-A 3/4" x 100'	20122A	100'
Blue Pex-A 3/4" x 300'	20322A	300'
Blue Pex-A 1" x 20'	20228A	5/Bag
Blue Pex-A 1" x 100'	20128A	100'

Red Pipe PEX-A 21000A series



Description	Part #	Qty
Red Pex-A 1/2" x 20'	21205A	20/Bag
Red Pex-A 1/2" x 100'	21105A	100'
Red Pex-A 1/2" x 300'	21305A	300'
Red Pex-A 1/2" x 1000'	21905A	1000'
Red Pex-A 3/4" x 20'	21222A	10 / Bag
Red Pex-A 3/4" x 100'	21122A	100'
Red Pex-A 3/4" x 300'	21322A	300'
Red Pex-A 1" x 20'	21228A	5 / Bag
Red Pex-A 1" x 100'	21128A	100'

Natural PEX-A 92000 series



Description	Part #	Qty
Natural Pex-A 1/2" x 20'	92205	20/Bag
Natural Pex-A 1/2" x 100'	92105	100'
Natural Pex-A 1/2" x 300'	92305	300'
Natural Pex-A 1/2" x 1000'	92905	1000'
Natural Pex-A 3/4" x 20'	92222	10 / Bag
Natural Pex-A 3/4" x 100'	92122	100'
Natural Pex-A 3/4" x 300'	92322	300'
Natural Pex-A 1" x 20'	92228	5 / Bag
Natural Pex-A 1" x 100'	92128	100'
Natural Pex-A 1" x 300'	92328	300'

PEX-A Pipe SDR-9



Description	Part #	Qty
Natural Pex-A 1-1/4" x 20' SDR-9	99942	5/Bag
Natural Pex-A 1-1/4" x 100' SDR-9	99940	100'
Natural Pex-A 1-1/4" x 300' SDR-9	99943	300'
Natural Pex-A 1-1/2" x 20' SDR-9	99952	5/Bag
Natural Pex-A 1 1/2" x 100' SDR-9	99950	100'
Natural Pex-A 1 1/2" x 300' SDR-9	99953	300'
Natural Pex-A 2" x 20' SDR-9	99962	5/Bag
Natural Pex-A 2" x 100' SDR-9	99960	100'
Natural Pex-A 2" x 300' SDR-9	99963	300'

PEX - B Pipe

Blue Pipe PEX-B 20000 series



Description	Part #	Qty
Blue Pex-B 1/2"x 20'	20205	50/Bag
Blue Pex-B 1/2"x 100'	20105	100'
Blue Pex-B 1/2" x 300'	20305	300'
Blue Pex-B 1/2" x 500'	20505	500'
Blue Pex-B 1/2" x 1000'	20905	1000'
Blue Pex-B 3/4" x 20'	20222	25/Bag
Blue Pex-B 3/4" x 100'	20122	100'
Blue Pex-B 3/4" x 300'	20322	300'
Blue Pex-B 3/4" x 500'	20522	500'
Blue Pex-B 1' x 20'	20228	15/Bag
Blue Pex-B 1" x 100'	20128	100'
Blue Pex-B 1' x 300'	20328	300'
Blue Pex-B 1" x 500'	20528	500'

PEX - B Pipe

Red Pipe PEX-B 21000 series



Description	Part #	Qty
Red Pex-B 1/2"x 20'	21205	50/Bag
Red Pex-B 1/2"x 100'	21105	100'
Red Pex-B 1/2" x 300'	21305	300'
Red Pex-B 1/2" x 500'	21505	500'
Red Pex-B 1/2" x 1000'	21905	1000'
Red Pex-B 3/4" x 20'	21222	25/Bag
Red Pex-B 3/4" x 100'	21122	100'
Red Pex-B 3/4" x 300'	21322	300'
Red Pex-B 3/4" x 500'	21522	500'
Red Pex-B 1' x 20'	21228	15/Bag
Red Pex-B 1" x 100'	21128	100'
Red Pex-B 1' x 300'	21328	300'
Red Pex-B 1" x 500'	21528	500'

White Pipe PEX-B 29000 series



Description	Part #	Qty
White Pex-B 1/2"x 20'	29205	50/Bag
White Pex-B 1/2"x 100'	29105	100'
White Pex-B 1/2" x 300'	29305	300'
White Pex-B 1/2" x 500'	29505	500'
White Pex-B 1/2" x 1000'	29905	1000'
White Pex-B 3/4" x 20'	29222	25/Bag
White Pex-B 3/4" x 100'	29122	100'
White Pex-B 3/4" x 300'	29322	300'
White Pex-B 3/4" x 500'	29522	500'
White Pex-B 1' x 20'	29228	15/Bag
White Pex-B 1" x 100'	29128	100'
White Pex-B 1' x 300'	29328	300'

Fittings - F1960 No Lead Brass

F1960 Sleeves



Description	Part #	Qty
1/2" F1960 Pex Sleeves	39175	50
3/4" F1960 Pex Sleeves	39133	25
1" F1960 Pex Sleeves	39169	10
1-1/4" F1960 Pex Sleeves	39143	10
1-1/2" F1960 Pex Sleeves	39150	10
2" F1960 Pex Sleeves	39160	10

Elbows



Description	Part #	Qty
1/2" LF F1960 x 1/2" F1960 Elbow	39192	50
3/4" LF F1960 x 3/4" F1960 Elbow	39194	25
1" LF F1960 x 1" F1960 Elbow	39191	10
3/4" LF F1960 x 3/4" Sweat Male Elbow	39193	25
3/4" LF F1960 x 3/4" Sweat Female Elbow	39196	25
1/2" LF F1960 x 1/2" FIP Drop Ear 90	39195	25
1/2" LF F1960 x 4" x 8" Stub Out Elbow	39102	25

Tees



Description	Part #	Qty
1/2" LF F1960 x 1/2" F1960 x 1/2" F1960 Tee	39132	50
3/4" LF F1960 x 3/4" F1960 x F1960 Tee	39136	25
1" LF F1960 x 1" F1960 x 1" F1960 Tee	39188	10
1/2" LF F1960 x 1/2" F1960 x 3/4" F1960 Tee	39157	25
3/4" LF F1960 x 1/2" F1960 x 1/2" F1960 Tee	39178	25
3/4" LF F1960 x 1/2" F1960 x 3/4" F1960 Tee	39162	25
3/4" LF F1960 x 3/4" F1960 x 1/2" F1960 Tee	39165	25
3/4" LF F1960 x 3/4" F1960 x 1" F1960 Tee	39167	10
1" LF F1960 x 3/4" F1960 x 3/4" F1960 Tee	39135	10
1" LF F1960 x 1" F1960 x 1/2" F1960 Tee	39182	10
1" LF F1960 x 1" F1960 x 3/4" F1960 Tee	39184	10

Couplings



Description	Part #	Qty
1/2" LF F1960 x 1/2" F1960 Coupling	39115	50
3/4" LF F1960 x 3/4" F1960 Coupling	39112	25
1" LF F1960 x 1" F1960 Coupling	39128	5
3/4" LF F1960 x 1/2" F1960 Coupling	39125	25
1" LF F1960 x 3/4" F1960 Coupling	39126	10

Male Sweat Adapter



Description	Part #	Qty
1/2" LF F1960 x 1/2" Male Sweat Adapter	39105	50
3/4" LF F1960 x 1/2" Male Sweat Adapter	39112	25
3/4" LF F1960 x 3/4" Male Sweat Adapter	39134	25
3/4" LF F1960 x 1" Male Sweat Adapter	39108	10
1" F1960 x 1" Male Sweat Adapter	39101	1
1-1/4" F1960 x 1-1/4" Male Sweat Adapter	39145	1
1-1/2" LF F1960 x 1-1/2" Male Sweat Adapter	39151	1
2" LF F1960 x 2" Male Sweat Adapter	39161	1

Female Sweat Adapter



Description	Part #	Qty
1/2" LF F1960 x 1/2" Female Sweat Adapter	39124	50
1/2" LF F1960 x 3/4" Female Sweat Adapter	39129	25
3/4" LF F1960 x 1/2" Female Sweat Adapter	39127	25
3/4" LF F1960 x 3/4" Female Sweat Adapter	39123	25
3/4" LF F1960 x 1" Female Sweat Adapter	39130	10
1" LF F1960 x 1" Female Sweat Adapter	39111	10
1-1/4" LF F1960 x 1-1/4" Female Sweat Adapter	39146	1
1-1/2" LF F1960 x 1-1/2" Female Sweat Adapter	39154	1
2" LF F1960 x 2" Female Sweat Adapter	39166	1

Plugs



Description	Part #	Qty
1/2" LF F1960 x Plug	39155	50
3/4" LF F1960 x Plug	39152	25
1" LF F1960 x Plug	39158	10

Fittings - Lead Free F1960 Brass

MIP Adapter



Description	Part #	Qty
1/2" LF F1960 x 1/2" MIP Adapter	39106	50
3/4" LF F1960 x 3/4" MIP Adapter	39138	25
3/4" LF F1960 x 1" MIP Adapter	39131	10
1" LF F1960 x 1" MIP Adapter	39110	10
1-1/4" LF F1960 x 1-1/4" MIP Adapter	39147	1
1-1/2" LF F1960 x 1-1/2" MIP Adapter	39156	1
2" LF F1960 x 2" MIP Adapter	39163	1

FIP Adapter



Description	Part #	Qty
1/2" LF F1960 x 1/2" FIP Adapter	39120	50
3/4" LF F1960 x 1/2" FIP Adapter	39142	25
3/4" LF F1960 x 3/4" FIP Adapter	39144	25
3/4" LF F1960 x 1" FIP Adapter	39141	10
1" LF F1960 x 1" FIP Adapter	39140	10
1-1/4" LF F1960 x 1-1/4" FIP Adapter	39148	1
1-1/2" LF F1960 x 1-1/2" FIP Adapter	39159	1
2" LF F1960 x 2" FIP Adapter	39168	1

PRESS x F1960



Description	Part #	Qty
1/2" LF Copper Press x 1/2" F1960 Adapter	37905	30
3/4" LF Copper Press x 3/4" F1960 Adapter	37922	20
1" LF Copper Press x 1" F1960 Adapter	37928	15
1-1/4" LF Copper Press x 1-1/4" F1960 Adapter	37940	10
1-1/2" LF Copper Press x 1-1/2" F1960 Adapter	37950	5
2" LF Copper Press x 2" F1960 Adapter	37963	3

Ball Valves & Stops



Description	Part #	Qty
1/2" LF F1960 Full Port Ball Valve	39197	1
3/4" LF F1960 Full Port Ball Valve	39198	1
1" LF F1960 Full Port Ball Valve	39199	1
1/2" LF PEX F1960 x 1/4" OD Supply Straight Stop	30305	1
1/2" LF PEX F1960 x 1/4" OD Supply Angle Stop	30405	1
1/2" LF PEX F1960 x 3/8" OD Supply Straight Stop	30505	1
1/2" LF PEX F1960 x 3/8" OD Supply Angle Stop	30605	1

Fittings - F1960 Plastic Poly

AquaSeal cold expansion F1960 plastic poly fittings conform to ASTM F877
F1960 NSF-61 PW-G, CAN/CSA B137.5 standards

Elbows



Description	Part #	Qty
Poly 1/2" F1960 Elbow	39282	25
Poly 3/4" F1960 Elbow	39294	25
Poly 1" F1960 Elbow	39291	10
Poly 1-1/4" F1960 Elbow	39293	1
Poly 1-1/2" F1960 Elbow	39295	1
Poly 2" F1960 Elbow	39296	1

Couplings



Description	Part #	Qty
Poly 1/2" F1960 Coupling	39215	25
Poly 3/4" F1960 Coupling	39222	25
Poly 1" F1960 Coupling	39228	25
Poly 1-1/4" F1960 Coupling	39340	1
Poly 1-1/2" F1960 Coupling	39350	1
Poly 2" F1960 Coupling	39260	1

Reducing Couplings



Description	Part #	Qty
Poly 3/4" x 1/2" F1960 Coupling	39227	25
Poly 1" x 1/2" F1960 Coupling	39326	25
Poly 1" x 3/4" F1960 Coupling	39229	25
Poly 1-1/4" x 3/4" F1960 Coupling	39242	1
Poly 1-1/4" x 1" F1960 Coupling	39241	1
Poly 1-1/2" x 1" F1960 Coupling	39253	1
Poly 1-1/2" x 1-1/4" F1960 Coupling	39251	1
Poly 2" x 1-1/2" F1960 Coupling	39261	1

Plugs



Description	Part #	Qty
Poly 1/2" F1960 Plug	39255	25
Poly 3/4" F1960 Plug	39252	25
Poly 1" F1960 Plug	39258	10
Poly 1-1/4" F1960 Plug	39254	1
Poly 1-1/2" F1960 Plug	39256	1
Poly 2" F1960 Plug	39259	1

MIP Adapters



Description	Part #	Qty
Poly 1/2" F1960 Male Adapter	39206	25
Poly 3/4" F1960 Male Adapter	39238	25

Tees



Description	Part #	Qty
Poly 1/2" F1960 Tee	39232	25
Poly 3/4" F1960 Tee	39236	25
Poly 1" F1960 Tee	39288	10
Poly 1-1/4" F1960 Tee	39200	1
Poly 1-1/2" F1960 Tee	39210	1
Poly 2" F1960 Tee	39220	1

Reduced Tees



Description	Part #	Qty
Poly 1/2" x 1/2" x 3/4" F1960 Tee	39257	25
Poly 3/4" x 1/2" x 1/2" F1960 Tee	39278	25
Poly 3/4" x 1/2" x 3/4" F1960 Tee	39262	25
Poly 3/4" x 3/4" x 1/2" F1960 Tee	39265	25
Poly 3/4" x 3/4" x 1" F1960 Tee	39269	10
Poly 1" x 1" x 3/4" F1960 Tee	39284	10
Poly 1" x 1" x 1/2" F1960 Tee	39285	10
Poly 1" x 3/4" x 3/4" F1960 Tee	39244	10
Poly 1" x 3/4" x 1" F1960 Tee	39248	10
Poly 1" x 1/2" x 1" F1960 Tee	39237	10
Poly 1" x 3/4" x 1/2" F1960 Tee	39235	10
Poly 1-1/4" x 1" x 1-1/4" F1960 Tee	39201	1
Poly 1-1/4" x 1-1/4" x 1/2" F1960 Tee	39202	1
Poly 1-1/4" x 1-1/4" x 3/4" F1960 Tee	39203	1
Poly 1-1/4" x 1-1/4" x 1" F1960 Tee	39204	1
Poly 1-1/4" x 3/4" x 1-1/4" F1960 Tee	39208	1
Poly 1-1/4" x 1" x 1" F1960 Tee	39209	1
Poly 1-1/2" x 1-1/4" x 1-1/2" F1960 Tee	39212	1
Poly 1-1/2" x 1-1/2" x 3/4" F1960 Tee	39213	1
Poly 1-1/2" x 1-1/2" x 1" F1960 Tee	39214	1
Poly 1-1/2" x 1-1/2" x 1-1/4" F1960 Tee	39216	1
Poly 1-1/2" x 3/4" x 1-1/2" F1960 Tee	39205	1
Poly 1-1/2" x 1" x 1-1/2" F1960 Tee	39207	1
Poly 1-1/2" x 1" x 1" F1960 Tee	39211	1
Poly 2" x 1-1/2" x 2" F1960 Tee	39223	1
Poly 2" x 2" x 1" F1960 Tee	39221	1
Poly 2" x 2" x 1-1/4" F1960 Tee	39224	1
Poly 2" x 2" x 1-1/2" F1960 Tee	39325	1
Poly 2" x 1" x 2" F1960 Tee	39217	1
Poly 2" x 1-1/4" x 2" F1960 Tee	39218	1
Poly 2" x 1-1/2" x 1-1/2" F1960 Tee	39219	1
Poly 2" x 2" x 1/2" F1960 Tee	39305	1
Poly 2" x 2" x 3/4" F1960 Tee	39307	1



Fittings - Lead Free F1807 Brass

Elbows



Description	Part #	Qty
Brass LF 3/8" F1807 Crimp Elbow	38012	25
Brass LF 1/2" F1807 Crimp Elbow	38005	25
Brass LF 3/4" F1807 Crimp Elbow	38022	25
Brass LF 1" F1807 Crimp Elbow	38028	15
Brass LF 3/4" x 1/2" F1807 Crimp Elbow	38225	25
Brass LF 1-1/4" F1807 Crimp Elbow	38040	1
Brass LF 1-1/2" F1807 Crimp Elbow	38050	1
Brass LF 2" F1807 Crimp Elbow	38063	1

Tees



Description	Part #	Qty
Brass LF 1/2" F1807 Crimp Tee	36555	25
Brass LF 3/4" F1807 Crimp Tee	36222	25
Brass LF 1" F1807 Crimp Tee	36888	15
Brass LF 1-1/4" F1807 Crimp Tee	36040	1
Brass LF 1-1/2" F1807 Crimp Tee	36050	1
Brass LF 2" F1807 Crimp Tee	36022	1

Reducing Tees



Description	Part #	Qty
Brass LF 3/4" x 3/4" x 1/2" F1807 Crimp Tee	36255	25
Brass LF 3/4" x 1/2" x 3/4" F1807 Crimp Tee	36252	25
Brass LF 3/4" x 1/2" x 1/2" F1807 Crimp Tee	39262	25
Brass LF 1/2" x 1/2" x 3/4" F1807 Crimp Tee	36552	25
Brass LF 1" x 3/4" x 3/4" F1807 Crimp Tee	36822	15
Brass LF 1" x 1" x 3/4" F1807 Crimp Tee	36885	15
Brass LF 1" x 1" x 1/2" F1807 Crimp Tee	36882	15
Brass LF 1-1/4" x 1-1/4" x 3/4" F1807 Crimp Tee	36443	1
Brass LF 1-1/4" x 1-1/4" x 1/2" F1807 Crimp Tee	36445	1
Brass LF 1-1/4" x 1-1/4" x 1" F1807 Crimp Tee	36448	1
Brass LF 1-1/2" x 1-1/2" x 3/4" F1807 Crimp Tee	36553	1
Brass LF 1-1/2" x 1-1/2" x 1" F1807 Crimp Tee	36558	1
Brass LF 1-1/2" x 1-1/2" x 1-1/4" F1807 Crimp Tee	36554	1
Brass LF 2" x 2" x 1" F1807 Crimp Tee	36221	1
Brass LF 2" x 1-1/4" x 1-1/4" F1807 Crimp Tee	36244	1
Brass LF 2" x 1-1/2" x 1-1/4" F1807 Crimp Tee	36254	1
Brass LF 2" x 2" x 1-1/4" F1807 Crimp Tee	36224	1
Brass LF 2" x 2" x 1-1/2" F1807 Crimp Tee	36226	1
Brass LF 2" x 1-1/2" x 1-1/2" F1807 Crimp Tee	36256	1

Fittings - Lead Free F1807 Brass

Couplings



Description	Part #	Qty
Brass LF 3/8" F1807 Crimp Coupling	39012	25
Brass LF 1/2" F1807 Crimp Coupling	39005	25
Brass LF 3/4" F1807 Crimp Coupling	39022	25
Brass LF 1" F1807 Crimp Coupling	39028	15
Brass LF 1-1/4" F1807 Crimp Coupling	39040	1
Brass LF 1-1/2" F1807 Crimp Coupling	39050	1
Brass LF 2" F1807 Crimp Coupling	39063	1

Reducing Couplings



Description	Part #	Qty
Brass LF 1/2" x 3/8" F1807 Crimp Coupling	39006	25
Brass LF 3/4" x 1/2" F1807 Crimp Coupling	39225	25
Brass LF 1" x 3/4" F1807 Crimp Coupling	39226	15
Brass LF 1-1/4" x 1" F1807 Crimp Coupling	39240	1
Brass LF 1-1/2" x 1-1/4" F1807 Crimp Coupling	39540	1
Brass LF 2" x 1-1/2" F1807 Crimp Coupling	39250	1

Male Sweat Adapter



Description	Part #	Qty
Brass LF 1/2" F1807 Male Sweat Crimp Adapter	37105	25
Brass LF 3/4" F1807 Male Sweat Crimp Adapter	37122	25
Brass LF 1" F1807 Male Sweat Crimp Adapter	37128	15
Brass LF 1/2" F1807 x 3/4" Male Sweat Adapter	37121	25
Brass LF 5/8" F1807 x 3/4" Male Sweat Adapter	37123	25
Brass LF 1-1/4" F1807 Male Sweat Adapter	37444	1
Brass LF 1-1/2" F1807 Male Sweat Adapter	37155	1
Brass LF 2" F1807 Male Sweat Adapter	37163	1

Female Sweat Adapter



Description	Part #	Qty
Brass LF 1/2" F1807 Female Sweat Crimp Adapter	37205	25
Brass LF 3/4" F1807 Female Sweat Crimp Adapter	37222	25
Brass LF 1" F1807 Female Sweat Crimp Adapter	37228	25
Brass LF 1/2" F1807 x 3/4" Female Sweat Adapter	37229	25
Brass LF 5/8" F1807 x 3/4" Female Sweat Adapter	37230	25
Brass LF 1-1/4" F1807 Female Sweat Adapter	37440	1
Brass LF 1-1/2" F1807 Female Sweat Adapter	37250	1



Description	Part #	Qty
Brass LF 5/8" F1807 x 3/4" Female Sweat Elbow	37224	25
Brass LF 1/2" F1807 x 3/4" Female Sweat Elbow	37225	25

Fittings - Lead Free F1807 Brass

PEX x MIP Adapters



Description	Part #	Qty
Brass LF 3/8" F1807 x 1/2" MIP Adapter	37512	25
Brass LF 1/2" F1807 x 1/2" MIP Adapter	37505	25
Brass LF 3/4" F1807 x 3/4" MIP Adapter	37522	25
Brass LF 1" F1807 x 1" MIP Adapter	37528	15
Brass LF 1/2" F1807 x 3/4" MIP Adapter	37552	25
Brass LF 1" F1807 x 3/4" MIP Adapter	37582	10
Brass LF 1-1/4" F1807 x 1-1/4" MIP Adapter	37444	1
Brass LF 1-1/2" F1807 x 1-1/2" MIP Adapter	37555	1
Brass LF 2" F1807 x 2" MIP Adapter	37022	1
Brass LF 1/2" F1807 x 1/2" MIP Elbow	37506	25
Brass LF 1/2" F1807 x 3/4" MIP Elbow	37509	25

PEX X FIP Adapters



Description	Part #	Qty
Brass LF 3/8" F1807 x 1/2" FIP Adapter	37620	25
Brass LF 1/2" F1807 x 1/2" FIP Adapter	37605	25
Brass LF 1/2" F1807 x 3/4" FIP Adapter	37609	25
Brass LF 3/4" F1807 x 3/4" FIP Adapter	37622	25
Brass LF 1" F1807 x 1" FIP Adapter	37628	10
Brass LF 1-1/4" F1807 x 1-1/4" FIP Adapter	37640	1
Brass LF 1-1/2" F1807 x 1-1/2" FIP Adapter	37650	1
Brass LF 3/4" F1807 x 3/4" FIP Swivel Adapter	37722	25
Brass LF 1/2" F1807 x 1/2" FIP Swivel Adapter	37755	25
Brass LF 1/2" F1807 x 3/4" FIP Swivel Adapter	37752	25

Plugs



Description	Part #	Qty
Brass LF 3/8" F1807 Plug	35012	25
Brass LF 1/2" F1807 Plug	35005	25
Brass LF 3/4" F1807 Plug	35022	25
Brass LF 1" F1807 Plug	35028	15
Brass LF 1-1/4" F1807 Plug	35040	1
Brass LF 1-1/2" F1807 Plug	35050	1
Brass LF 2" F1807 Plug	35063	1

Fittings - Lead Free F1807 Brass



Description	Part #	Qty
1/2" LF Copper Press x 1/2" F1807 Adapter	37805	30
3/4" LF Copper Press x 3/4" F1807 Adapter	37822	20
1" LF Copper Press x 1" F1807 Adapter	37828	15
1-1/4" LF Copper Press x 1-1/4" F1807 Adapter	37840	10
1-1/2" LF Copper Press x 1-1/2" F1807 Adapter	37850	5
2" LF Copper Press x 2" F1807 Adapter	37863	3

Drop Ear



Stub Out



Description	Part #	Qty
1/2" Lead Free Brass Drop Ear Elbow	38305	25
1/2" Lead Free Stub Out 3-1/2" x 8"	38205	1
1/2" Lead Free Stub Out 3-1/2" x 8" w/ Nail Flange	38206	1

Ball Valves



Description	Part #	Qty
1/2" LF Brass Ball Valve	33705	1
3/4" LF Brass Ball Valve	33722	1
1" LF Brass Ball Valve	33728	1
1-1/4" LF Brass Ball Valve	33740	1
1-1/2" LF Brass Ball Valve	33750	1
2" LF Brass Ball Valve	33763	1

Ball Valve Stops



Description	Part #	Qty
1/2" LF PEX F1807 x 3/8" OD Supply Straight Stop	33505	1
1/2" LF PEX F1807 x 3/8" OD Supply Angle Stop	33605	1
1/2" LF PEX F1807 x 1/4" OD Supply Straight Stop	33305	1
1/2" LF PEX F1807 x 1/4" OD Supply Angle Stop	33405	1

Multiport Tees

Lead-Free Brass



Description	Part #	Qty
Brass LF 3/4" F1807 Inlet Only w/3, 1/2" Outlets	26019	1
Brass LF 3/4" F1807 Inlet Only w/4, 1/2" Outlets	26020	1
Brass LF 3/4" F1807 Inlet/Outlet w/3, 1/2" Outlets	26021	1
Brass LF 3/4" F1807 inlet/Outlet w/4, 1/2" Outlets	26022	1

F2159 ProPlas



Description	Part #	Qty
ProPlas 3/4" F2159 Inlet/Outlet w/2, 1/2" Outlets	26332	1
ProPlas 3/4" F2159 Inlet/Outlet w/3, 1/2" Outlets	26333	1
ProPlas 3/4" F2159 Inlet/Outlet w/4, 1/2" Outlets	26334	1
ProPlas 3/4" F2159 Inlet/Outlet w/6, 1/2" Outlets	26336	1
ProPlas 3/4" F2159 Inlet Only w/2, 1/2" Outlets	26322	1
ProPlas 3/4" F2159 Inlet only w/3, 1/2" Outlets	26323	1
ProPlas 3/4" F2159 Inlet Only w/4, 1/2" Outlets	26324	1

F1960 ProPlas



Description	Part #	Qty
ProPlas 3/4" F1960 Inlet/Outlet w/2, 1/2" Outlets	36332	1
ProPlas 3/4" F1960 Inlet/Outlet w/3, 1/2" Outlets	36333	1
ProPlas 3/4" F1960 Inlet/Outlet w/4, 1/2" Outlets	36334	1
ProPlas 3/4" F1960 Inlet/Outlet w/6, 1/2" Outlets	36336	1
ProPlas 3/4" F1960 Inlet Only w/3, 1/2" Outlets	36323	1
ProPlas 3/4" F1960 Inlet only w/4, 1/2" Outlets	36324	1
ProPlas 3/4" F1960 Inlet Only w/6, 1/2" Outlets	36326	1

F1960 ProPlas Opposing Port



Description	Part #	Qty
ProPlas 3/4" F1960 Inlet/Outlet w/3, 1/2" Outlets	36313	1
ProPlas 3/4" F1960 Inlet/Outlet w/4, 1/2" Outlets	36314	1
ProPlas 3/4" F1960 Inlet/Outlet w/6, 1/2" Outlets	36316	1
ProPlas 3/4" F1960 Inlet only w/3, 1/2" Outlets	36303	1
ProPlas 3/4" F1960 Inlet Only w/4, 1/2" Outlets	36304	1
ProPlas 3/4" F1960 Inlet only w/8, 1/2" Outlets	36308	1

Fittings - F2159 PPSU Plastic

AquaSeal ProPlas plastic fittings are manufactured to ASTM F2159 and CSA B137.5 standards and approved by CSA, IAPMO and NSF.

ProPlas Elbows



Description	Part #	Qty
ProPlas 1/2" F2159 Elbow	185033	50
ProPlas 3/4" x 1/2" F2159 Reducing Elbow	185043	50
ProPlas 3/4" F2159 Elbow	185044	50
ProPlas 1" F2159 Elbow	185054	25
ProPlas 1/2" F2159 x 1/2" Swivel Elbow	185333	50
ProPlas 3/4" F2159 x 3/4" Swivel Elbow	185344	50
ProPlas 1/2" F2159 x 3/8" MIP Elbow	195328	25
ProPlas 1/2" F2159 x 1/2" MIP Elbow	195322	25
ProPlas 3/4" F2159 x 3/4" MIP Elbow	195434	25

ProPlas Tees



Description	Part #	Qty
ProPlas 1/2" F2159 Tee	165333	50
ProPlas 3/4" F2159 Tee	165444	50
ProPlas 1" F2159 Tee	165555	25
ProPlas 1/2" x 1/2" x 3/4" F2159 Reducing Tee	165334	50
ProPlas 3/4" x 1/2" x 1/2" F2159 Reducing Tee	165433	50
ProPlas 3/4" x 1/2" x 3/4" F2159 Reducing Tee	165434	50
ProPlas 3/4" x 3/4" x 1/2" F2159 Reducing Tee	165443	50
ProPlas 1" x 1" x 1/2" F2159 Reducing Tee	165553	25
ProPlas 1" x 3/4" x 3/4" F2159 Reducing Tee	165544	25
ProPlas 1" x 3/4" x 1" F2159 Reducing Tee	165545	25
ProPlas 1" x 1" x 3/4" F2159 Reducing Tee	165554	25

ProPlas Couplings



Description	Part #	Qty
ProPlas 1/2" F2159 Coupling	175033	50
ProPlas 3/4" x 1/2" F2159 Reducing Coupling	175043	50
ProPlas 3/4" F2159 Coupling	175044	50
ProPlas 1" x 3/4" F2159 Reducing Coupling	175054	25
ProPlas 1" F2159 Coupling	175055	25

ProPlas FIP Swivel Adapters



Description	Part #	Qty
ProPlas 3/8" F2159 x 1/2" FIP Swivel Adapter	195203	50
ProPlas 1/2" F2159 x 1/2" FIP Swivel Adapter	195033	50
ProPlas 3/4" F2159 x 3/4" FIP Swivel Adapter	195044	50

ProPlas MIP Adapters



Description	Part #	Qty
ProPlas 1/2" F2159 x 1/2" MIP Adapter	195333	100
ProPlas 1/2" F2159 x 3/4" MIP Adapter	195334	50
ProPlas 3/4" F2159 x 3/4" MIP Adapter	195344	100

ProPlas Plugs



Description	Part #	Qty
ProPlas 3/8" F2159 Plug	155038	50
ProPlas 1/2" F2159 Plug	155012	25
ProPlas 3/4" F2159 Plug	155034	25
ProPlas 1" F2159 Plug	155001	25

Press Sleeves & Tools

PEX Pipe Cutter



Description	Part #	Qty
ProPlas Pex Pipe Cutter 3/8" - 1"	10100	1
ProPlas Pex Radial Pipe Cutter 1/2" & 3/4"	10101	50

Press Sleeves & Tools



Description	Part #	Qty
1/2" Press Sleeve	24312	100
3/4" Press Sleeve	24334	100
1" Press Sleeve	24301	50
1" Press Sleeve Tool	13101	1
1/2" Close Quarter Press Sleeve Tool	13102	1
1/2" & 3/4" Combination Press Sleeve Tool	12123	1



Description	Part #	Qty
1/2", 3/4" & 1" Manual F1960 Expansion Tool	12432	1
DeWalt 20Volt 1/2" - 1" Cordless F1960 Expansion Tool	12433	1



PexGrip Clamps & Tools



Description	Part #	Qty
AquaSeal 3/8" Pex Grip Clamps	24133	100
AquaSeal 1/2" Pex Grip Clamps	24176	100
AquaSeal 5/8" Pex Grip Clamps	24119	50
AquaSeal 3/4" Pex Grip Clamps	24234	50
AquaSeal 1" Pex Grip Clamps	24296	50
3-Handle Pex Grip Crimper	12148	1
Ratchet One Hand Pex Grip Crimper	12150	1
Clamp Cutter - Removal Tool	12160	1

Crimp Connectors



Description	Part #	Qty
3/8" Annealed Black Copper Crimp Ring	24012	100
1/2" Annealed Black Copper Crimp Ring	24005	100
3/4" Annealed Black Copper Crimp Ring	24022	100
1" Annealed Black Copper Crimp Ring	24028	25
1-1/4" Annealed Black Copper Crimp Ring	24014	25
1-1/2" Annealed Black Copper Crimp Ring	24016	25
2" Annealed Black Copper Crimp Ring	24002	25

Crimp Tools



Description	Part #	Qty
1-1/4" - 2" Combination Copper Crimp Ring Tool	11104	1
1/2" Crimp Tool	11105	1
1/2" - 3/4" Crimp Tool	11522	1
3/4" Crimp Tool	11122	1
1" Crimp Tool	11128	1

AquaSeal

Product Properties

HDPE Outer Jacket

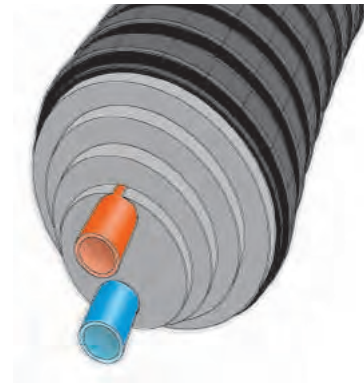
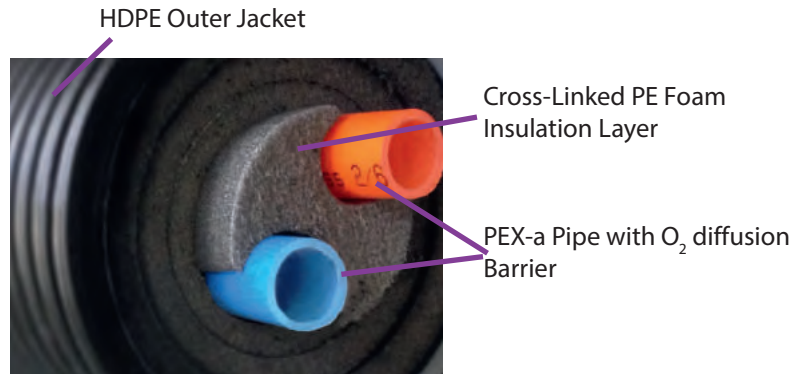
This corrugated high density polyethylene casing provides the necessary mechanical protection and water sealant properties, and is shock-resistant, even at sub-zero temperatures

Insulation Properties

The insulation of Terre-Pex pipes is fully composed of micro-cellular cross linked polyethylene foam with a closed cellular structure, permitting low water vapor diffusion, good insulation and resistance to extreme temperatures and is not water soluble like competition using polyurethane.

Pex-A Pipe

Plastic pipes have more than proved their quality in recent years. They are flexible, heat and pressure resistant, non-corrosive and lightweight. The Terre-Pex pipe is supplied with pipes manufactured according to the Engel process.



Applications

Terre-Pex Piping Systems are a complete line of flexible piping from 1" to 4" in size with all required accessories for cost effective and permanent installations of:

- District Heating and Cooling** running hydronic lines between buildings with minimal energy losses, through unheated spaces, and for extending traditional distribution systems easily and economically
- Underground Piping Systems** direct burial of lines up to 328' in length without joints for chilled water, condenser water, or any subterranean system requiring minimal heat gains/losses
- Plumbing Systems** for networked cold, hot, and recirculated water lines between buildings, to external or remote facilities such as barns, animal sheds, etc.
- Radiant & snowmelting Systems** for feeding remote manifold boxes or adding onto existing systems
- Interior Building Piping** to provide the quickest and most guaranteed installation of piping systems with no couplings or joints, already insulated to save time and money at the jobsite, and allow maximum flexibility of carrier pipes through difficult spaces.

Terre-Pex Insulated Pipe System

Terre-Pex Insulated Pipes are the ideal solution for delivery of hot and chilled water where the energy preservation is key. Terre-Pex insulated piping provides the highest bending flexibility in the industry and thus minimizes overhead in project related pipe system considerations.

We differentiate Terre-Pex insulated pipes with either single or double carrier pipes for convenient supply and return piping based on project needs.

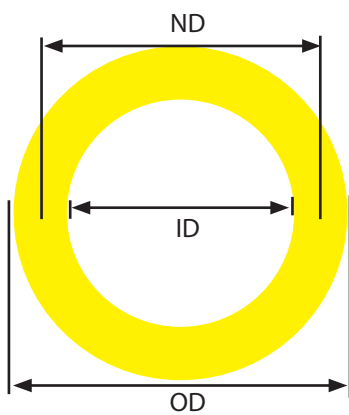
Terre-Pex insulated pex-A pipe can be delivered in any length required up to full coils of 328 feet. ComfortPro Systems provides a cut-to-length quick ship service for your project's needs. There is an additional cut fee per cut with this service. With a wide selection of pipe diameters in stock CPS can provide the right solution for your application requirements.

ComfortPro Systems also offers a full selection of pipe matching brass fittings 1" to 4" (110mm)

Energy Efficiency of Terre-Pex Pipes (R-Value)

Insulation Efficiency is commonly referred to as R-value. The tables below show R-Values for Terre-Pex Single and Double pipes.

Nomenclature Diameters

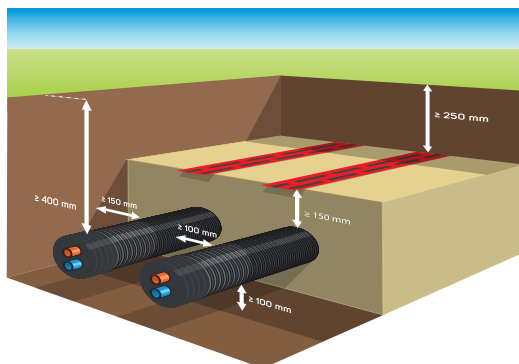


ND = Nominal Diameter
ID = Internal Diameter
OD = Outer Diameter

Single Heating Pipes								
Part No.	Jacket OD"	Pipe OD"	Wall"	Pipe ID"	Bend Rad."	Gal/100'	BTU/Hr	R-Value/Ft'
H9032	3.5"	1.26"	0.11"	1.03"	9.8"	4.34	205	7.064
H14040	5.5"	1.57"	0.15"	1.28"	13.8"	6.72	307	6.868
H14050	5.5"	1.97"	0.18"	1.61"	15.7"	10.53	478	6.868
H16063	6.3"	2.48"	0.23"	2.02"	21.7"	16.71	751	6.434
H16075	6.3"	2.95"	.027"	2.42"	29.5"	23.85	1126	5.229
H20090	7.9"	3.54"	0.32"	2.90"	43.3"	34.27	1638	5.227
H200110	7.9"	4.33"	0.32"	3.54"	47.2"	51.24	2388	3.889

Double Heating Pipes								
Part No.	Jacket OD"	Pipe OD"	Wall"	Pipe ID"	Bend Rad."	Gal/100'	BTU/Hr	R-Value/Ft'
HD1401	5.5"	0.98"	0.09"	.08"	13.8"	5.26	102	7.109
HD14032	5.5"	1.26"	0.11"	1.03"	15.7"	8.68	205	5.661
HD16040	6.3"	1.57"	0.15"	1.28"	23.6"	13.45	307	5.468
HD16050	6.3"	1.97"	0.18"	1.61"	23.6"	21.08	478	3.918
HD20063	7.9"	2.48"	0.23"	2.02"	47.2"	33.42	751	3.595

Terre-Pex



Quick Installation

1. Simply dig a trench (Minimum 24" deep)
2. Place 6" of sand into trench
3. Lay the Terre-Pex pipe in the trench
4. Cover over with fine earth or sand
5. Connect to appliance or wall outlet, e.g. boiler or heat exchanger

No compensation elements needed since the pipe moves inside the HDPE jacket with temperature.

Terre-Pex Insulated Pipe System

SINGLE Pipe



Description	Part #	Qty
32mm Single Insulated Pex 90mm Outer Jacket	H9032	1
1-1/4" 40mm Single Insulated Pex 140mm Outer Jacket	H14040	1
1-1/2" 50mm Single Insulated Pex 140mm Outer Jacket	H14050	1
2" 63mm Single Insulated Pex 160mm Outer Jacket	H16063	1
2-1/2" 75mm Single Insulated Pex 160mm Outer Jacket	H16075	1
3" 90mm Single Insulated Pex 200mm Outer Jacket	H20090	1
4" 110mm Single Insulated Pex 200mm Outer Jacket	H200110	1

DOUBLE Pipe



Description	Part #	Qty
8mm Double Insulated Pex 140mm Outer Jacket	HD1401	1
32mm Double Insulated Pex 140mm Outer Jacket	HD14032	1
1-1/4" 40mm Double Insulated Pex 160mm Outer Jacket	HD16040	1
1-1/2" 50mm Double Insulated Pex 160mm Outer Jacket	HD16050	1
2" 63mm Double Insulated Pex 200mm Outer Jacket	HD20063	1

MIP Connectors



Description	Part #	Qty
1" MIP x 32mm Pex Connector	HC32/1	1
1-1/4" MIP 40mm Pex Connector	HC40/1.25M	1
1-1/2" MIP 50mm Pex Connector	HC50/1.5M	1
2" MIP 63mm Pex Connector	HC63/2M	1
2-1/2" MIP 75mm Pex Connector	HC75/2.5M	1
3" MIP 90mm Pex Connector	HC90/3M	1
4" MIP 110mm Pex Connector	HC110/4M	1

Couplings



Description	Part #	Qty
32mm x 32mm Pex Coupling	HC32x32	1
1-1/4"	HC40x40	1
1-1/2" 50mm x 50mm Pex Coupling	HC50x50	1
2" 63mm x 63mm Pex Coupling	HC63x63	1
2-1/2" 75mm x 75mm Pex Coupling	HC75x75	1
3" 90mm x 90mm Pex Coupling	HC90x90	1
4" 110mm x 110mm Pex Coupling	HC110x110	1

Single Pipe Dust Caps



Description	Part #	Qty
1" 32mm Single Dust Cap 90mm OD	DEC90/32	1
1-1/4" 40mm Single Dust Cap 140mm OD	DEC140/40	1
1-1/2" 50mm Single Dust Cap 140mm OD	DEC140/50	1
2" 63mm Single Dust Cap 160mm OD	DEC160/63	1
2-1/2" 75mm Single Dust Cap 160mm OD	DEC160/75	1
3" 90mm Single Dust Cap 200mm OD	DEC200/90	1
4" 110mm Single Dust Cap 200mm OD	DEC200/110	1

Double Pipe Dust Caps



Description	Part #	Qty
1" 32mm Double Dust Cap 140mm OD	DECD140/32	1
1-1/4" 40mm Double Dust Cap 160mm OD	DECD160/40	1
1-1/2" 50mm Double Dust Cap 160mm OD	DECD160/50	1
2" 63mm Double Dust Cap 200mm OD	DECD200/63	1

Single Pipe Shrink Caps



Description	Part #	Qty
1-1/4" & 1-1/2" Single Pipe Shrink Cap	SEC/40	1
2" & 2-1/2" Single Pipe Shrink Cap	SEC/70	1
3" & 4" Single Pipe Shrink Cap	SEC/80	1

Double Pipe Shrink Caps



Description	Part #	Qty
1" Double Pipe Shrink Cap (140mm OD)	SECD/10	1
1-1/4" Double Pipe Shrink Cap (160mm OD)	SECD/40	1
1-1/2" Double Pipe Shrink Cap (160mm OD)	SECD/50	1
2" Double Pipe Shrink Cap (200mm OD)	SECD/60	1

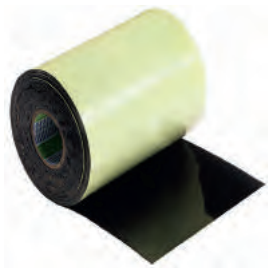
SSL Shrink Sleeves



Description	Part #	Qty
3-3/4" - 4-1/4" x 9" Shrink Sleeve (90mm x 110mm)	SSL90/110	1
5-3/4" - 6-1/4" x 9" Shrink Sleeve (140mm x 160mm)	SSL140/160	1
7-7/8" - 8-7/8" x 9" Shrink Sleeve (200mm x 225mm)	SSL200/225	1

Terre-Pex SINGLE and DOUBLE pipe Shrink Sleeve for HDPE jacket repair. An easy to use way to seal small cuts or damages to the outer jacket. The Terre-Pex shrink sleeve provides leakage protection into the insulation layer.

R Series Repair Tape



Description	Part #	Qty
6" x 33' Adhesive Repair Tape	RETAP-C	1

Terre-Pex

Terre-Pex pre-insulated pipe solutions

Easy to install Cost-Effective Energy-saving

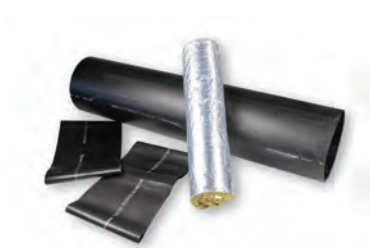
Terre-Pex Feed -Through Wall Sleeves



Description	Part #	Qty
Wall Sleeve Fits 75 & 90mm Pipe - 15-3/4" Long	WLS75/90	1
Wall Sleeve Fits 110mm Pipe - 15-3/4" Long	WLS110	1
Wall Sleeve Fits 140& 160mm Pipe - 15-3/4" Long	WLS140/160	1
Wall Sleeve Fits 200mm Pipe - 15-3/4" Long	WLS200	1

Terre-Pex Single and Double pipe (Not waterproof) Feed-Through Wall sleeve to hold Terre-Pex pipe jackets in place for wall openings, etc.

Terre-Pex Straight Insulation Sleeve



Description	Part #	Qty
Insulation Sleeve 8-7/8" x 39-1/2" (225mm x 1000mm)	SIS200	1
Insulation Sleeve 7" x 39-1/2" (180mm x 1000mm)	SIS160	1
Insulation Sleeve 6-1/4" x 33-1/2" (160mm x 850mm)	SIS140	1
Insulation Sleeve 5" x 27-1/2" (125mm x 700mm)	SIS110	1
Insulation Sleeve 4 1/2" x 27-1/2" (110mm x 700mm)	SIS90/75	1

Terre-Pex Tee Insulation Kit



Description	Part #	Qty
Terre-Pex Tee Fits 225, 160, 140mm Jacketed Pipes	TIK225/140	1
Terre-Pex Tee Fits 140, 110, 90mm Jacketed Pipes	TIK140/90	1

Terre-Pex Elbow Insulation Kit

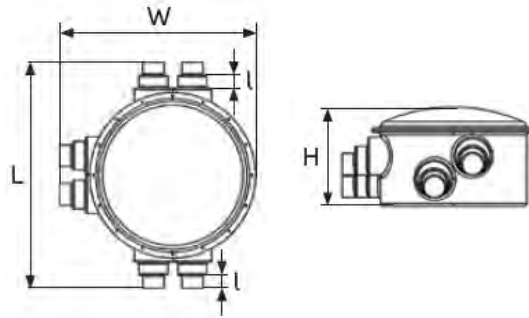


Description	Part #	Qty
Terre-Pex Elbow Fits 225, 160, 140mm Jacketed Pipe	LIK225/140	1

Terre-Pex Underground Inspection Chamber



Description	Part #	Qty
Terre-Pex Inspection Chamber Fits 225, 200/140mm Jacketed Pipes	UIC225/140	1



W 54" x L 62" x H 28"

Terre-Pex Shrink Sleeve For Inspection Chamber



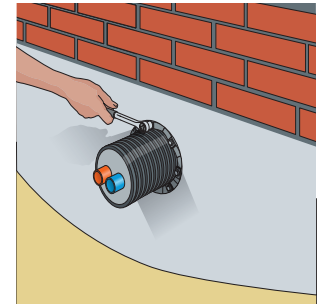
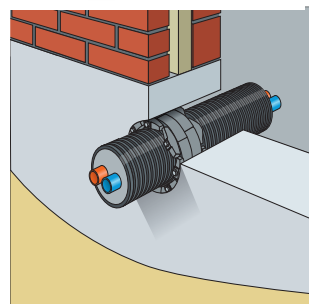
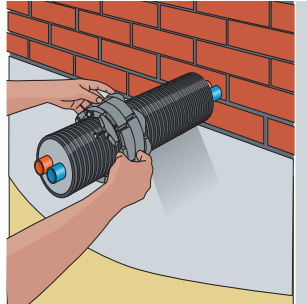
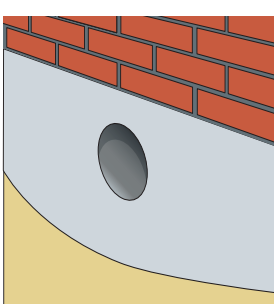
Description	Part #	Qty
5-1/2" x 9" Shrink Sleeve (140mm x 225mm)	SSL90/110	1
6-5/8" x 9" Shrink Sleeve (160mm x 225mm)	SSL160/180	1
7-7/8" x 9" Shrink Sleeve (200mm x 225mm)	SSL200/225	1

Terre-Pex Seal Chain Assembly

Single & Double Pipe Seal Chain Assembly Wall Feed-Through. Allows to securely anchor Terre-Pex pipe outer jackets or large diameter Pex piping in wall openings. Easy on-site assembly.



Description	Part #	Qty
Terre-Pex Wall Seal 90mm Pipe - 150mm Wall Opening	SCHA9/340	1
Terre-Pex Wall Seal 110mm Pipe - 150mm Wall Opening	SCHA10/300	1
Terre-Pex Wall Seal 140mm Pipe - 200mm Wall Opening	SCHA13/340	1
Terre-Pex Wall Seal 160mm Pipe - 250mm Wall Opening	SCHA9/475	1
Terre-Pex Wall Seal 200mm Pipe - 250mm Wall Opening	SCHA9/325	1



FACTORY WARRANTY

AquaHeat

Radiant Heating and Snowmelting Products

All AquaHeat barrier pex pipes have a 30 year limited factory warranty against defects in material and workmanship. All AquaHeat manifolds, parts, and fittings also carry a 25 year limited factory warranty.

All Pro Zone thermostats and controls have a 2 year limited factory warranty.

AquaSeal

Pex Piping & Plumbing Products

All AquaSeal pex pipes, fittings and accessories have a 25 year limited factory warranty against defects in material and workmanship.

TerrePex

Pre Insulated Pex-A Piping Systems

All Terre-Pex Insulated Pipes, fittings, and accessories have a 10 year limited factory warranty against defects in material and workmanship.

All pex A pipes are manufactured in Israel and all pex B pipes are manufactured in the USA.

Within the first 10 years of above warranties, Comfort Pro Systems will cover reasonable costs in consequential damages if found to be the direct fault of Comfort Pro products and customer has taken necessary steps to stop damages to said property. Comfort Pro will not be responsible for labor or other costs associated with replacement of products.

*Please see website for more detailed warranty policies and procedures:
www.comfortprosystems.com*

Comfort Pro Systems, LLC

Distribution Center

24000 S. Peculiar Drive, Peculiar, MO 64078

Customer Service 816-425-9824

Phone (816)425-9824

Toll Free 800-968-8905

Fax (816)-479-4568

www.comfortprosystems.com

orders@comfortprosystems.com

Design Notes



ComfortPro Systems®

A better approach. A better system.

*A systems approach
integrating established &
emerging technologies.*

