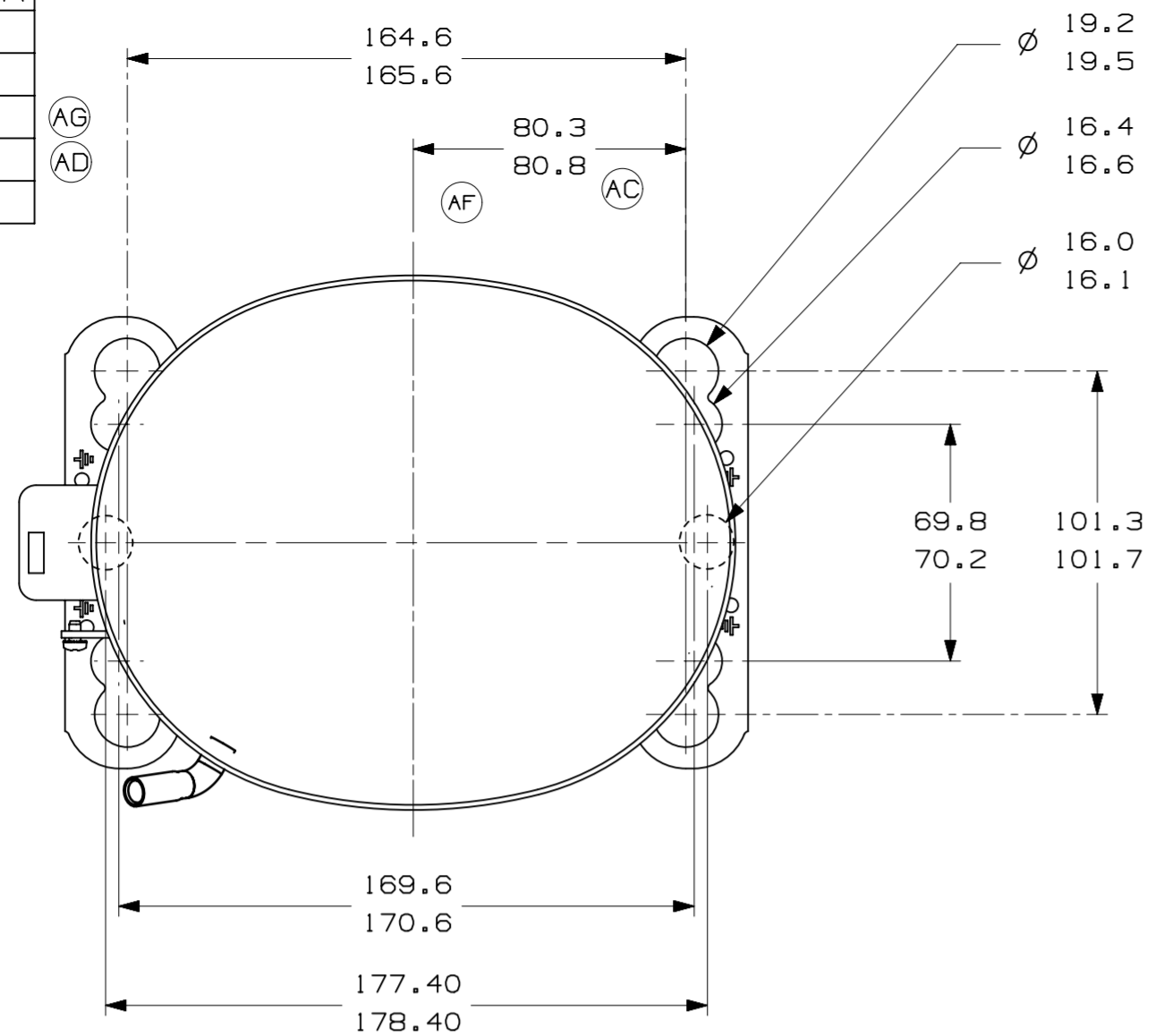
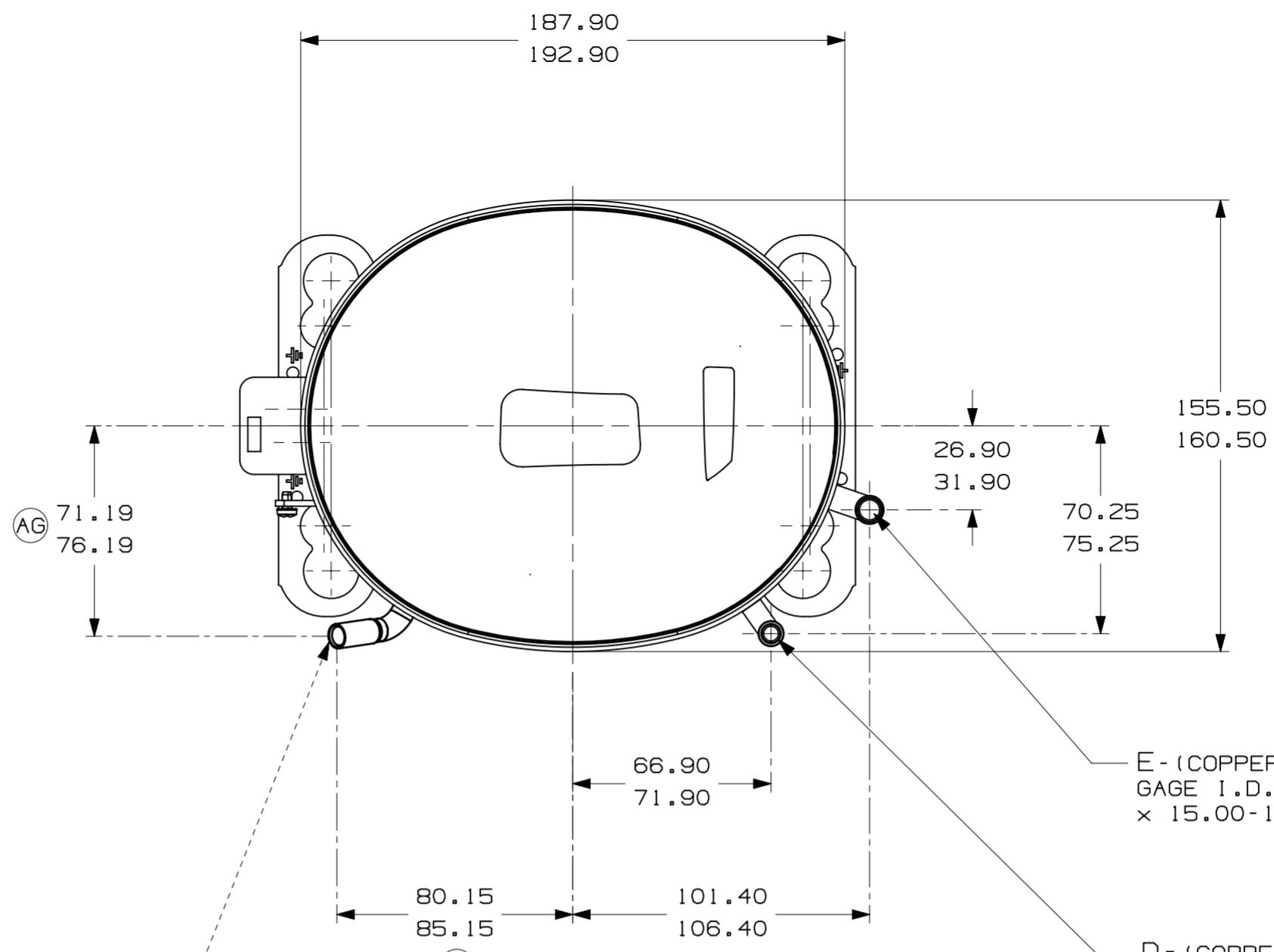


ITEM	PART NUMBER
A	320-10238
B	14963285
C	14947663
D	580-10243
E	14963571



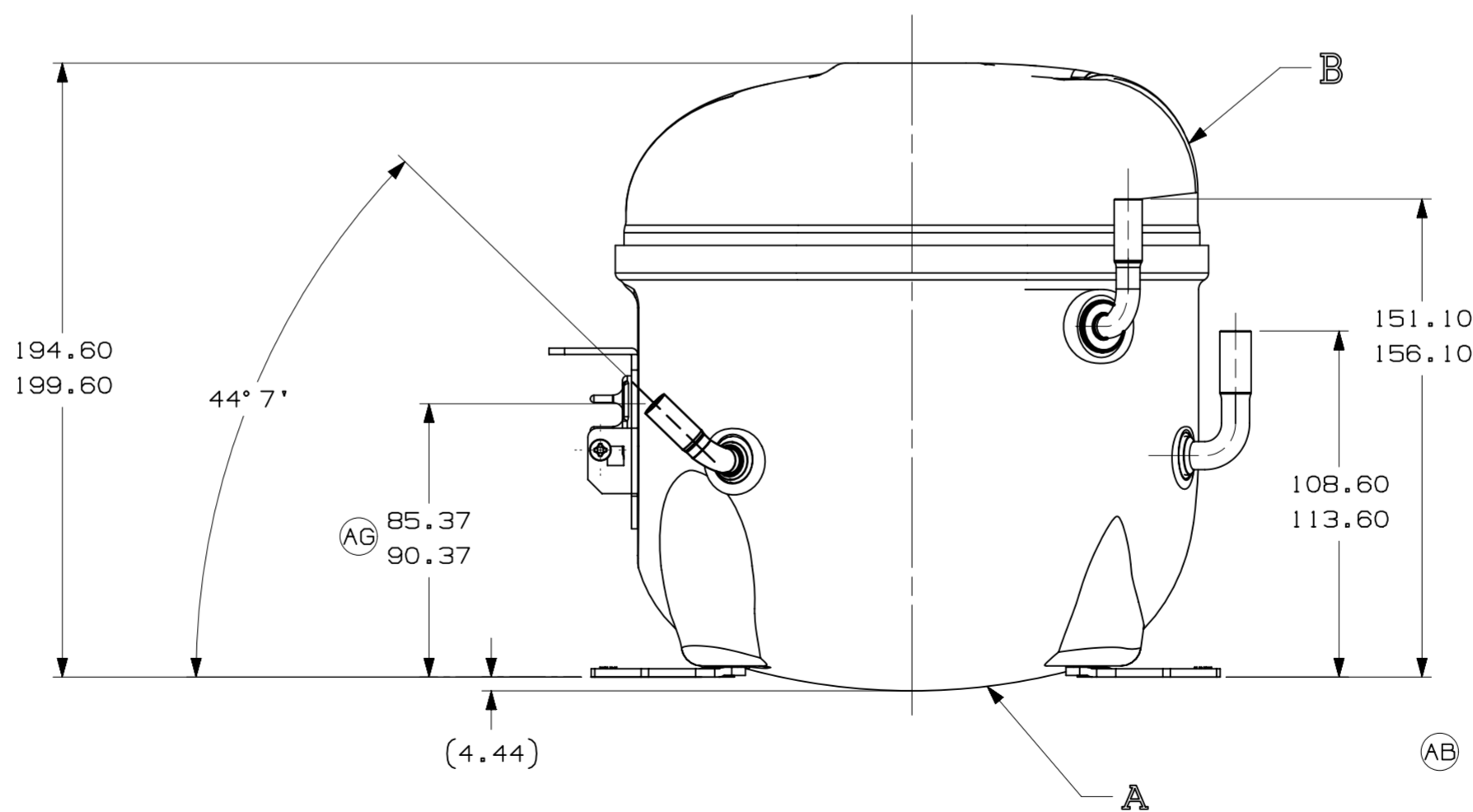
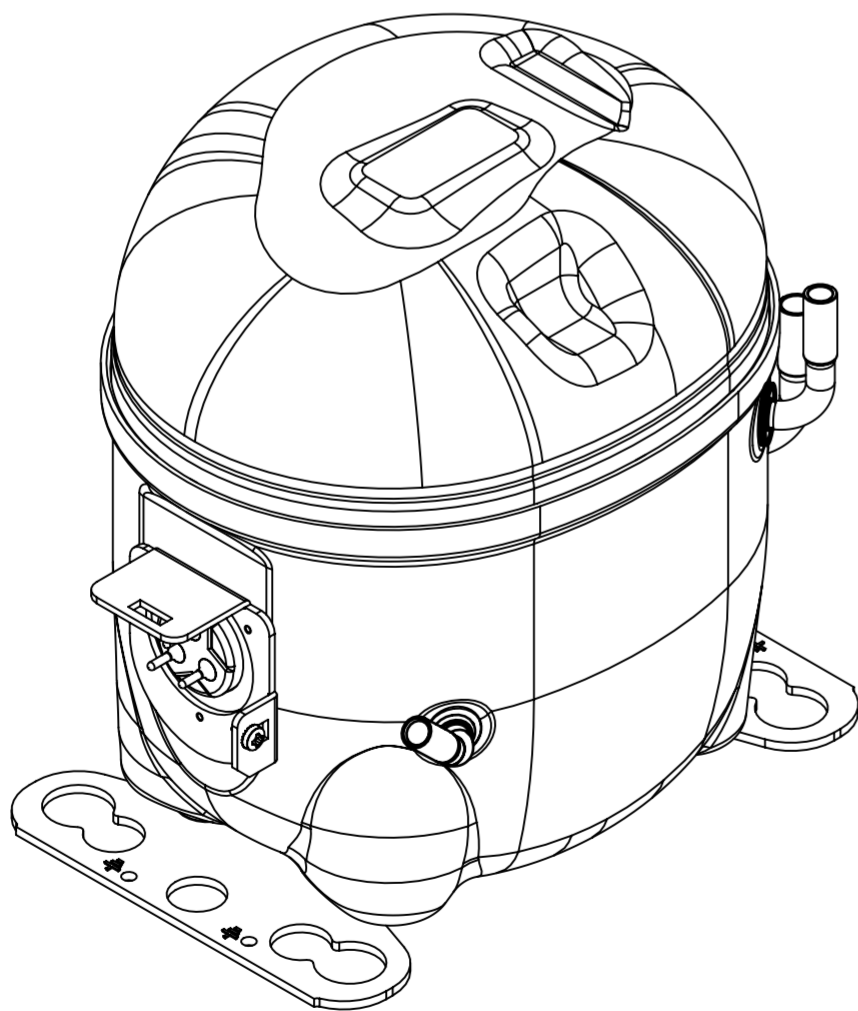
- AUXILIARY VIEW -  
FASTENING DIMENSIONS



E- (COPPER) SUCTION TUBE  
GAGE I.D. TO 8.00-8.10  
× 15.00-17.00 DEEP.

D- (COPPER) DISCHARGE TUBE  
GAGE I.D. TO 6.45-6.55  
× 15.00-17.00 DEEP.

C- (COPPER) PROCESS TUBE  
GAGE I.D. TO 6.45-6.55  
× 15.00-17.00 DEEP.



NOTES:

- 1- IF SPECIFIED IN BM, ASSEMBLE PARTS AS SHOWN.
- 2- SEE SPEC. "A-B" & A-C FOR PROCESS.
- 3- THERE CAN BE NO CREASES IN THE TUBES. (CREASES ARE SIGNS OR MARKS THAT ARE IN SOMETHING THAT BENDS)
- 4- AFTER THE FOLDS IN THE TUBES, CANNOT BE ACCELERATED TO AREA EXCEEDING 30%.
- 5- TUBES OF SUCTION, DISCHARGE AND PROCESS MUST BE FREE OF INK ON 15.8mm (5/8") FROM TOP OF THE TUBES AS SPEC. TECUMSEH A-B4.
- 6- FOR SUPPLIER ENVIRONMENTAL REGULATORY REQUIREMENTS, SEE TECUMSEH GLOBAL SPEC. 08.

LT	LC	CHANGE	DATE
AA		LIBERACAO	08-08-12 P.S. A.M.
AB	A/3	ADICIONADO NOTA	13-09-13
AC	F/6	ALTERADA MEDIDA ERA: 80.3-80.8	31-01-14
AD	F/B	ALTERADO TUBO D ERA: 14963571B	03-03-15
AE		RETRAIRO DETALHE (PARA USUARIA DE PINTURA)	08-08-16 AMP. WC.
AF	F/7	ALTERADA MEDIDA ERA: 82.30-82.80 E ACRESC. NOTA 6	14-02-18 R6.
AG			02-05-22 SM. R6.
BA	ERA 91.80-96.60		
BB	ERA 86.40-91.40		
BC	ERA 72.10-77.10		
BD	ERA 14963573		

THIRD ANGLE PROJECTION

UNITS: mm

DRAWING SIZE: A2

0. A SYMBOLS AS PROCEDURE 2.01.031 TECUMSEH OF BRAZIL

- ★ = CATEGORY I
- ▲ = CATEGORY II
- = CATEGORY III
- = CATEGORY IV

DO NOT SCALE THIS DRAWING. ALL FERROUS MATERIALS MUST NOT BE MAGNETIZED AS RECEIVED OR AT COMPRESSION

NAME: SALES COMPRESSOR

PART NO.: DCAE106

SCALE: 1:2

PAGE: 1/1

DATE: 08/06/12

REF.

FAMILY: AE2