

# PRODUCT INFORMATION PACKET

**FASCO**<sup>®</sup>

Model No:  
Catalog No: A241  
702111706.BLOWER...1 SPD.  
Draft Inducer



Regal and Fasco are trademarks of Regal Beloit Corporation or one of its affiliated companies.  
©2019 Regal Beloit Corporation, All Rights Reserved. MC017097E

**REGAL**<sup>®</sup>



### Nameplate Specifications

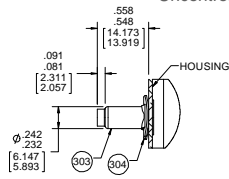
Voltage	<b>208-230 V</b>	Motor Type	<b>Shaded Pole</b>
Overload Protector	<b>Thermally</b>	Speed	<b>2800/3200 RPM</b>
Current	<b>0.56/0.65 A</b>	Number of Speeds	<b>1</b>
Frequency	<b>50/60 Hz</b>	Phase	<b>1</b>
Ambient Temperature	<b>40 °C</b>	UL	<b>Yes</b>
Insulation Class	<b>B</b>	CSA	<b>Yes</b>

### Technical Specifications

Blower Outlet Shape	<b>Rectangle</b>	Motor Enclosure	<b>Open</b>
Blower Outlet Flange	<b>No</b>	Bearing Type	<b>Ball</b>
Outline Drawing	<b>OUTLINE</b>	Connection Diagram	<b>CONNECTION</b>

**This is an uncontrolled document once printed or downloaded and is subject to change without notice. Date Created: 07/11/2019**

- NOTES:
1. IMPELLER MATERIAL: ALUMINIZED STEEL.
  2. DISTANCE FROM INSIDE OF HOUSING TO BLOWER WHEEL IS .160/100 [4.064/2.540] WITH WHEEL PULLED AS CLOSE TO INLET AS SHAFT ENDPLAY ALLOWS.
  3. INSPECTION TEST FIXTURING IS REQUIRED.
  4. STATIC TAP READING IS TO BE  $-1.35''$  MINIMUM CORRECTED TO STANDARD AIR (0.075 LB/FT<sup>3</sup>) WITH A 1/5/16 INLET RESTRICTOR.
  5. GASKET NO. 68-23643-01-01, FASCO P/N 86804163 TO BE INCLUDED WITH EACH BLOWER.
  6. APPLY PC 373 LABEL TO MOTOR 90° FROM OIL HOLE.
  7. SERIAL NUMBER.
  8. PACK 1 PER CONTAINER, 9 CONTAINERS PER LAYER, 4 LAYERS PER PALLET, 36 MAX. PER PALLET, PACKING ASSY. 87854714, PER 88834200 AND 88834408.
  9. CARTON LABELS MUST ALL FACE ONE DIRECTION TOWARD THE OPEN END OF THE PALLET. SEE 88834408.
  10. NO PACKING TAPE OVER CARTON LABEL.
  11. BLOWER - NATURAL MOTOR - FLAT BLACK.

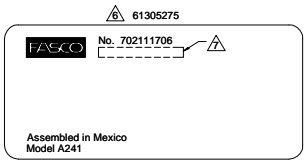
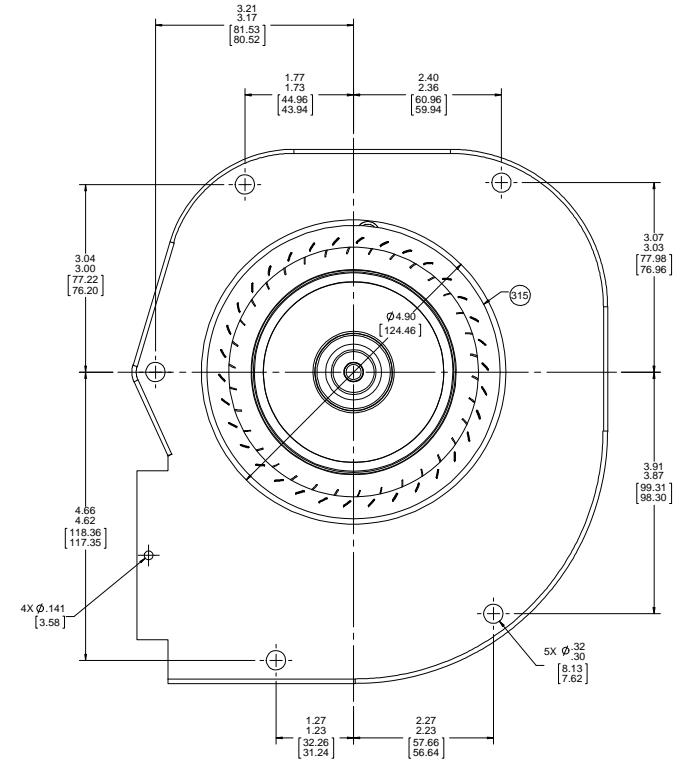
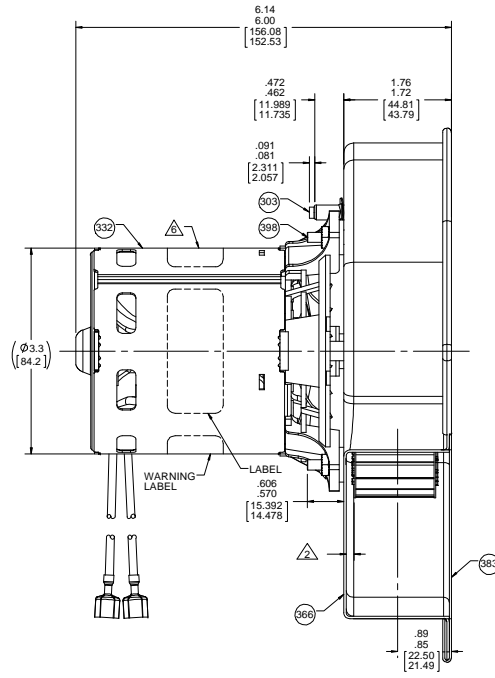
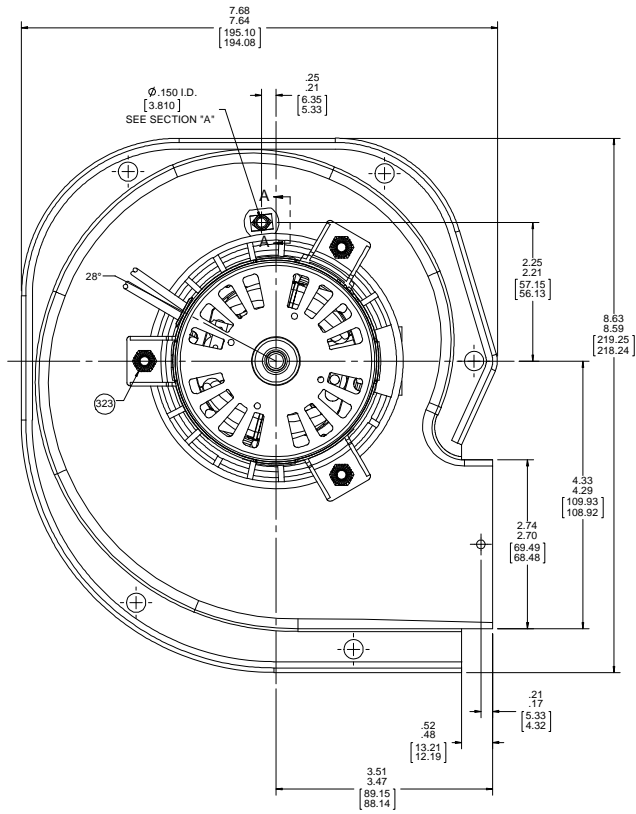


SECTION A-A

THERMALLY PROTECTED CLASS "B" INSULATION 416 SS SHAFT

APPLICATION:	DISTRIBUTION	B	LA	FR	A	S	C	E	B	A
CUSTOMER:	FASCO DIST.	GS	21	47	V	05	CL	5	0	0
CUSTOMER PN:	A241									

LEAD MATERIAL  
 18 GA. 125°C 264 INSUL  
 X-LINKED POLY.  
 (2) BLACK  
 7.00V.00 [177.80/127.00]  
 W/MSPADE TERM.  
 AMP 2-520102-2



AVERAGE PERFORMANCE TEST DATA WITH 1 5/16 INLET RESTRICTOR			
AT 230 VOLTS 60 Hz			
RPM	WATTS	AMPS	
3377	77.2	.56	

DRAWING REVISION	REVISION BY	MLS	DATE	TOLERANCES UNLESS OTHERWISE SPECIFIED	DRAWN BY	MLS	DATE	DESCRIPTION	
ECO-0144295	LA	ECO-0144295	5/17/2018	ASG .001 - .005 ANGLE 11°	ECO-0144295	ECO-0144295	6/8/2016	Regal Beloit America, Inc.	
UPDATED BLOWER PACKING THIS DRAWING IS THE PROPERTY OF REGAL BELOIT AMERICA, INC. AND IS TO BE USED ONLY FOR THE PRODUCTION OF THE BLOWER ASSEMBLY SHOWN HEREIN. IT IS NOT TO BE REPRODUCED, COPIED, OR TRANSMITTED IN ANY FORM OR BY ANY MEANS, ELECTRONIC OR MECHANICAL, INCLUDING PHOTOCOPYING, RECORDING, OR BY ANY INFORMATION STORAGE AND RETRIEVAL SYSTEM. WITHOUT THE WRITTEN PERMISSION OF REGAL BELOIT AMERICA, INC.				FINISH SURFACES TO BE SHARP EDGES .003 DIA (S/D) X 45° CORNER RADIUS R .01 (S/D) MACHINED SURFACES: 1/2/3/4 RIN SHOWN IN BRACKETS					
BLOWER WEIGHT 5 LBS.				ENDPLAY .XX/XX		REFERENCE 6/8/2016		OUTLINE BLOWER ASSY MATERIAL THIRD ANGLE PROJECTION SIZE D DRAWING NUMBER 702111706 SHEET 1 OF 1	