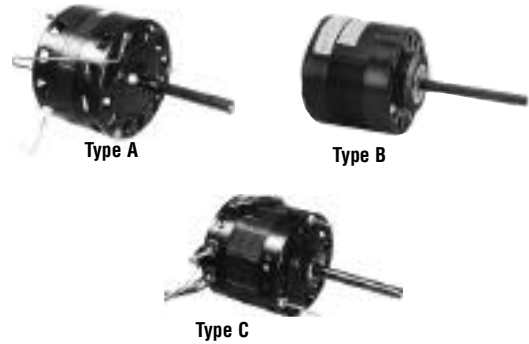


# 5" Diameter Single Shaft Open Fan/Blower Motors

## Furnaces - Air Handlers - Fan Coils

### Features:

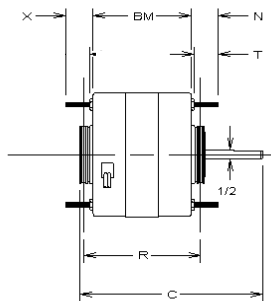
- Auto Protector
- Continuous Air Over
- Multiple Mount
- Open Construction
- Sleeve Bearing
- 1/2" Dia. - Flatted Shaft
- 40° C Ambient
- 42 Frame (5.0" Dia.)
- 60 HZ only



HP	RPM	Speeds	Volts	Amps	Stock Number	Alternate	Rotation	Motor Type	Ring* Type	Dim. Ref.	Conn. Dia.	Notes
<b>SHADED POLE</b>												
1/10-1/12-1/15	1050	3	115	3.2	<b>BL6425</b>		CCWLE	B	C	11	1	4,6
1/10-1/15-1/20-1/25	1050	4	115	4.1	<b>OCB6426</b>		CCWLE	A		1	2	1,5
1/8-1/10	1050	2	115	5.0	<b>BL6423</b>		CCWLE	B	C	2	45	2,5
1/8-1/10	1050	2	115	5.0	<b>BL6424</b>		CCWLE	A		3	45	2,6
1/8	1050	1	115	5.2	<b>BL6410</b>		CCWLE	B	B	4	93	6
1/8	1050	1	208-230	2.6	<b>B6411</b>		CCWLE	B	B	4	93	6
1/6	1050	1	115	5.5	<b>BL6412</b>		CCWLE	B	B	5	93	6
1/6-1/8-1/10-1/12	1050	4	115	5.5	<b>BL6419</b>		CCWLE	B	C	6	2	6
1/6-1/9	1050	2	115	5.6	<b>BL6420</b>		CCWLE	B	C	6	45	6
1/5	1050	1	115	6.0	<b>BL6413</b>		CCWLE	B	B	12	93	6
1/5-1/8-1/10	1050	3	115	6.5	<b>BL6414</b>		CCWLE	B	B	7	1	6
1/5-1/8-1/10	1050	3	208-230	3.2	<b>B6415</b>		CCWLE	B	B	7	1	6
1/5-1/8-1/10-1/15	1050	4	115	7.1	<b>BL6416</b>		CCWLE	B	B	8	2	6
<b>PERMANENT SPLIT CAPACITOR (Capacitor Not Included, Except Mounted on BL6541)</b>												
1/8-1/10-1/15-1/20	1075	4	115	2.2	<b>BL6541</b>		CCWLE	B	B	13	90	8
1/5-1/8-1/10	1075	3	115	3.2	<b>BL6505</b>		REV.	B	B	9	9	6,7
1/5-1/6-1/10	1075	3	208/230	1.3	<b>B6507</b>		REV.	B	B	9	9	6,
1/4-1/5-1/6	1075	3	115	4.7	<b>BL6519</b>		REV.	C		10	10	3,6
1/4-1/5-1/6	1075	3	208-230	2.0	<b>B6520</b>		REV.	C		10	10	3,6

### Notes:

1. Molex lead connection plug, 12" long leads
  2. Tapped holes for Coleman Mount
  3. 5 MFD, 370 VAC cap
  4. 3/8" flatted shaft
  5. 2 thru bolts, 4.42 dia. bolt circle
  6. 3 thru bolts, 4.42 dia. bolt circle
  7. 7.5 MFD, 370 VAC cap.
  8. 5 MFD, 370 VAC cap., mounted
- \* For ring type, see page 155



### Approximate Dimensions

Ref.	BM	R	C	N	T	X
1	3-9/16		8-3/16	4-5/16		1/4
2	3-5/16	4	7-11/16	3-11/16		11/16
3	3-5/16		7-11/16	4-1/16		1/4
4	3-3/8	4-1/8	9-7/16	5-1/2	1/2	1/2
5	3-7/8	4-9/16	8	3-11/16	1/2	1/2
6	3-7/8	4-3/4	8-7/8	4-7/16	9/16	11/16
7	3-7/8	4-9/16	9-15/16	5-1/2	1/2	1/2
8	3-7/8	4-9/16	7-1/16	2-5/8	1/2	1/2
9	3-7/8	4-5/8	9-15/16	5-1/2	1/2	1/2
10	4-1/16		9-1/4	4-11/16	13/16	1/2
11	3-9/16	4-1/8	8-7/8	3-13/16		5/8
12	3-3/8	4-1/8	9-7/16	5-1/2	1/2	1/2
13	3-9/16	4-5/16	8	3-7/8		