

90-113

90-112 THRU 90-130 FAN CONTROL CENTER

Transformer and relay combination for easy installation on a 4" X 4" junction box.

FEATURES

- Line voltage connections pre-wired
- Energy limiting Class II transformer design
- Color coded pre-stripped leads
- Low voltage connections on terminal board

SPECIFICATIONS

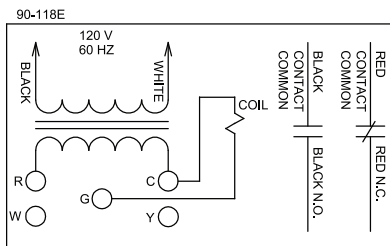
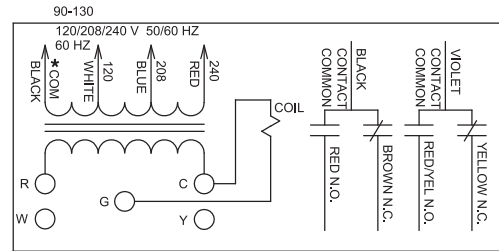
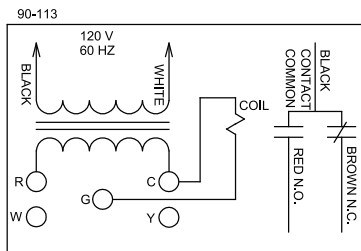
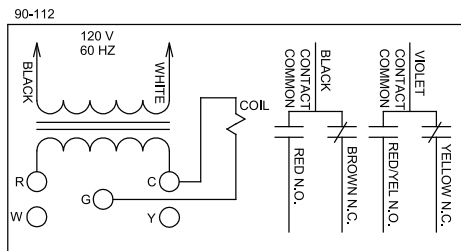
UR/CUR File NumberE73641

REPLACEMENT RELAY FOR FAN CONTROL CENTER

REPLACES RELAY ON	DESCRIPTION	MODEL NUMBER	ITEM NUMBER
90-112, 90-113, 90-117, 90-118E, 90-119, 90-130	DPDT Universal Plug-in Relay	90-340	90 340S1

90-112 THRU 90-130 FAN CONTROL CENTER

MARS NUMBER	TRANSFORMER						RELAY	CONTACT RATINGS				MODEL NUMBER	ITEM NUMBER
	PRIMARY			SECONDARY				120 VAC (AMPS)		240 VAC (AMPS)			
	VOLTAGE	HZ	CONNECTIONS	VOLTAGE	VA	CONNECTIONS		FULL LOAD	LOCKED ROTOR	FULL LOAD	LOCKED ROTOR		
24010	120	60	Color coded leads, pre-stripped	24V	40	Terminal board with 5 screw terminals	DPDT	13.8	82.8	6.9	41.4	90-112	90 112S1
24013							SPDT					90-113	90 113S1
24012							SPNO / SNPC					90-118E	90 118ES1
24010							DPDT					90-130	90 130S1



When the fan relay transformer is energized and the thermostat completes the connection from R to G the fan relay coil energizes. Line voltage power applied to contact common path travels to selected blower speed tap. Additional terminal Y and W are isolated tie point terminals to connect thermostat wiring to compressor and furnace (if required).

NOTE: Record the lead wire color with its corresponding terminal for future reference. Unused transformer input leads must be insulated.

* Black is common with respect to transformer winding, not external circuit.