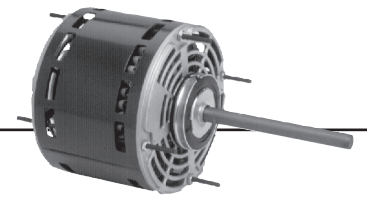


Permanent Split Capacitor Direct Drive Fan & Blower

5.6" Diameter, Open Air Over

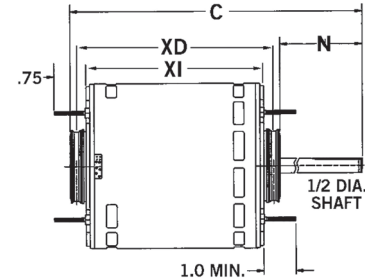


APPLICATIONS:

Residential and commercial direct drive fans and blowers.

FEATURES:

- Stud Extensions On Popular Models
- Designed for use with 370V Capacitors
- Class B Insulation
- 24" Leads
- Continuous Duty, Air Over
- Bearings Have All Angle Thrust System
- Reversible Rotation
- For Flex Mount, Order Catalog # 44; See Page 173
- Automatic Reset Thermal Overload Protector
- Connection and Capacitor Information Furnished in the Nameplate Data
- 2.5" Dia. Hub Rings Included
- All Angle Mount
- 208v will not be marked on DOE regulated spread-voltage motors. Refer to online data
- **Discount Symbol: DS-3HAC**



Hub Ring Mount (2.5") except as noted, Without Capacitor

HP	RPM/Spds.	Voltage	Catalog Number	List	Cap. MFD	Amps	Shaft N	Base XD	Shell XI	Total C	Ship Wt.	Notes	OEM
1/4	1075/3	115	1863	◆	7.5	3.5	5.0	5.4	4.9	10.4	10		
	1625/3	115	1690	◆	10.0	2.7	6.0	4.7	4.1	11.1	11.6		
	1075/3	208-230	1971	◆	7.5	1.5	5.0	5.4	4.9	10.4	9		
	1075/3	277	600	◆	4.0	1.6	5.0	5.2	4.6	11.7	13	69	
1/3	1075/3	115	1864	◆	7.5	5.0	5.0	5.6	5.1	10.7	12		
	1625/3	115	1692	◆	15.0	3.7	6.0	4.8	4.3	11.4	13		
	1075/3	208-230	1972	◆	7.5	1.9	5.0	5.6	5.1	10.7	11		
	1075/3	277	601	◆	4.0	2.2	6.0	5.5	5.0	11.9	14	69	
	1625/3	208-230	1693	◆	5.0	2.1	4.5	5.1	4.6	10.7	13		
1/3-1/8	825/2	208-230	5469	◆	7.5	2.4	4.5	-	5.3	9.8	17	72	
1/2	825/3	208-230	8064	◆	20.0	4.4	2.5	6.6	6.1	9.7	20	69	LE
	1075/3	115	1865	◆	10.0	6.5	5.0	6.4	5.9	11.4	16		
	1625/3	115	1694	◆	20.0	5.5	5.0	5.9	5.3	11.4	15.6	A	
	1075/3	208-230	1973	◆	10.0	2.9	5.0	6.2	5.7	11.7	17		
	1075/3	277	602	◆	6.0	3.4	6.0	5.7	5.2	12.2	15	69	
	1075/3	115	1323	◆	15	5.0	3.5	-	4.8	8.3	12	H11,LA	RH
1/2-1/6	1075/4	115	5460	◆	10.0/7.5	7.3	5.5	5.9	5.3	11.3	20	72	
	1075/4	208-230	5461	◆	10/5	3.6	5.0	5.9	5.3	10.8	15	72	
3/4	1625/3	115	1696	◆	15.0	8.6	6.0	5.9	5.4	12.4	20		
	1625/3	208-230	1697	◆	10.0	4.4-4.2	6.0	5.9	5.4	12.4	19	A	
	1075/3	115	8904	◆	15.0	9.5	5.0	6.4	5.9	11.4	11	69	
	1075/3	208-230	8905	◆	15.0	4.0	5.0	6.6	6.1	11.6	17	69	
	1075/3	277	5847	◆	15.0	4.1	6.0	6.7	6.2	13.2	19		
	1075/4	115	3340	◆	7.5	12.1	6.0	5.8	5.3	12.4	18		CA
	1075/5	208-230	8065	◆	20	5.0	2.5	8.5	8.0	11.4	18		
	1075/4	115	6452	◆	15.0	11.2	5.0	-	5.8	10.8	18	69, H11	
	1075/2	208-230	5471	◆	20/10	4.1	5.0	6.6	6.1	12.1	16	72	
3/4-1/5	1075/3	460	LX7930	◆	20	2.3	2.5	5.8	5.3	8.9	17	69	LE
	1075/2	115	5470	◆	20/10	8.1	5.0	6.6	6.1	11.6	17	72	
1	1075/3	115	8906	◆	20.0	12.1	5.0	6.6	6.1	12.2	22	H17	
	1075/3	208-230	8907	◆	20.0	5.6	5.0	6.6	6.1	12.2	22	H17	
	1625/3	115	1699	◆	25.0	11.1	6.0	6.4	5.9	12.9	22	H7	
	1625/3	208-230	1700	◆	20.0	5.1	6.0	5.9	5.3	12.4	20		

CA = Carrier LE = Lennox RH=Rheem

◆ Refer to Motorboss for Pricing

Note A: Class A Insulation

Note H7: 36" Leads, 2.25" Dia. Hubs With 2.5" Dia. Kit Included.

Note H11: Band Mount

Note H17: Class B Insulation, Studs Shaft Side Only, Ball Bearings

Note LA: Limited Availability

Note 69: No Stud Extension

Note 72: Includes 4 Holes In Shell For Rheem Mount

