

Goodman



Item ID	Volts	RPM	Amps	Speeds	Rotation	Type	Bearings	ENCL.	Dia. (In.)	Replaces	Notes
48331	115	3200	1.80	1	CWLE	SP	Ball	Open	C-Frame	5KSB46GF0001S, B4833000	79

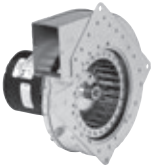
Notes:
79. Includes rubber boot



Item ID	Volts	RPM	Amps	Speeds	Rotation	Type	Bearings	ENCL.	Dia. (In.)	Replaces
66003	115	3250	0.92	1	CCWLE	PSC	Ball	Open	3.3	098862-1 11009001 11009003



Item ID	Stack Size	Volts	RPM	Amps	Speeds	Rotation	Type	Bearings	ENCL.	Dia. (In.)	Replaces
	(In.)										
66071	1 1/2	115	3000	2.80	1	CWLE	SP	Ball	Open	C-Frame	071M00000 223075015 20190601



Item ID	H.P.	Volts	RPM	Amps	Speeds	Rotation	Type	Bearings	ENCL.	Dia. (In.)	Replaces
A282	1/60	220	2600	0.45	1	CCW	SP	Sleeve	Open	3.3	B18590505 7021-8448



Item ID	H.P.	Volts	RPM	Amps	Speeds	Rotation	Type	Bearings	ENCL.	Dia. (In.)	Replaces
82483	1/50	115	3000	0.90	1	CWLE	SP	Ball	Open	3.3	B1859000 B18590005



Item ID	H.P.	Volts	RPM	Amps	Speeds	Rotation	Type	Bearings	ENCL.	Dia. (In.)	Replaces
A079	1/50	115	3000	1.10	1	CCW	SP	Sleeve	Totally Enclosed	3.3	B1859000, 74-70-21964-03-01 7021-6804



Item ID	H.P.	Volts	RPM	Amps	Speeds	Rotation	Type	Bearings	ENCL.	Dia. (In.)	Replaces
A140	1/50	115	3400	1.40	1	CW	SP	Sleeve	Open	3.3	B28330015 B2833001 7021-9000 7021-9087 FB-RFB140



Item ID	H.P.	Volts	RPM	Amps	Speeds	Rotation	Type	Bearings	ENCL.	Dia. (In.)	Replaces
66121	1/50	230	3000	0.22	1	CCWSE	PSC	Ball	Open	3	0131M00121P 0131M00121S



Item ID	H.P.	Volts	RPM	Amps	Speeds	Rotation	Type	Bearings	ENCL.	Dia. (In.)	Replaces
A162	1/50	208-230	3000	0.50	1	CCW	SP	Sleeve	Open	3.3	B295900 7021-8656