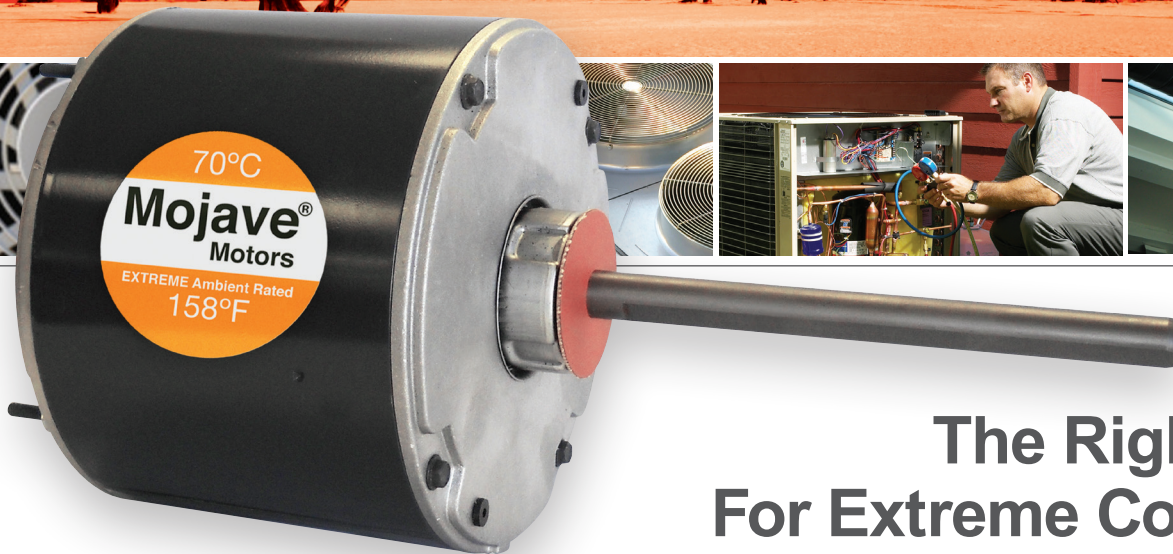


MOJAVE® Condenser Motors



The Right Motor
For Extreme Conditions™

70°C (158°F) | Ambient Rated

Nidec

NIDEC MOTOR CORPORATION

The Right Motor For Extreme Conditions™

Condensing units today are built to perform in ambient conditions up to 130°F. In certain areas, temperatures may put extra stress on the unit and the condenser fan motor. When you need that extra cushion of performance – look to U.S. MOTORS® brand products to bring you the motor that is at home in the desert – the MOJAVE® motor.

MOJAVE® Condenser Motors (Single Phase)

Horsepower: 1/12–3/4 HP

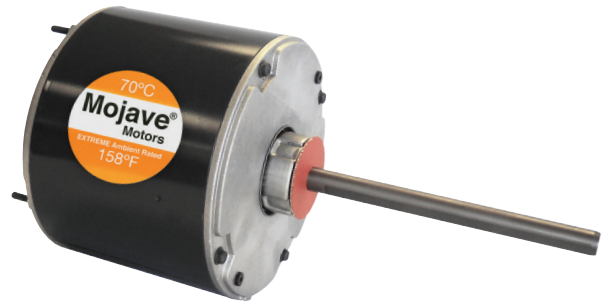
Speed Range: Single Phase – 825 or 1075 RPM

Rated Voltages: 208–230, 460 or 575 Volts

Temp Rise: Designed for 70°C (158°F) Ambient –
Built to withstand extreme temperature conditions

Insulation: Class F Insulation – Thermal endurance
to over 300°F

Enclosure: Totally Enclosed Air Over (TEAO) –
Allows for all position mounting



MOJAVE® Motor

Product Features

- **Ball Bearings** – Durability for high temperature applications, for longer life than traditional sleeve bearings
- **48" Leads** – Easier wiring into today's larger condensing units
- **Special Rotor Corrosion Protection** – Designed for longer life and sure start ups season after season.
- **Reversible** – Easy to change quick connect terminals for application flexibility

MOJAVE® 5.5" Diameter Motor Ratings

Catalog Number	HP	RPM	Volts	Spd Taps	230V Cap	Amps	Shaft Length	Total Length
1872H*	1/8	825	208–230	1	5.0	0.78	6.0	10.6
1873H*	1/6	825	208–230	1	5.0	1.2	6.0	10.6
1859H	1/6	1075	208–230	1	5.0	1.0	5.0	9.4
1874H*	1/4–1/8	825	208–230	1	5.0	2.1	6.0	10.9
1860H	1/4	1075	208–230	1	5.0	1.7	6.0	10.6
3736H	1/4	1075	460	1	7.5	0.8	6.0	11.1
1295H	1/4	1075	575	1	7.5	0.6	5.0	9.8
1875H*	1/3–1/5	825	208–230	1	7.5	2.4	6.0	11.6
1861H	1/3	1075	208–230	1	7.5	2.1	6.0	11.1
1278H	1/3	1075	575	1	7.5	0.7	5.0	10.9
3323H*	1/3–1/6	1075	208–230	1	7.5	2.0	5.0	9.3
3737H	1/3	1075	460	1	7.5	1.3	6.0	11.9
1870H	1/2	825	208–230	1	10.0	3.3	6.0	12.4
1862H	1/2	1075	208–230	1	10.0	3.2	6.0	11.9
3738H	1/2	1075	460	1	10.0	1.5	6.0	12.0
1868H	3/4	1075	208–230	1	10.0	4.7	6.0	12.4
3742H	3/4	1075	460	1	10.0	2.0	6.0	12.9

*Note: Includes Rheem® side shell holes.

RESCUE® MOJAVE® Condenser Motors

Think of them as service call assurance.

Now you'll always have a motor when you need it.

RESCUE® motors replace a variety of different horsepower applications.

Using RESCUE® motors will eliminate the need for temporary substitutions, extra driving time to get the right motor, and reduce the need for emergency openings in the evening.

You may not know what kind of motor you will need, but with RESCUE® motors on hand, you know you'll have one readily available.



RESCUE® MOJAVE®
Condenser Fan Motor

Product Features

- 70°C (158°F) Ambient Rated
- Special Treated Rotor for Longer Life
- Mounts with Thru-Bolts, Lead End and Side Shell Holes or Belly Band
- 48" Leads with Flag Terminals
- Extended Mounting Studs
- Ball-Bearing Design
- Reversible Rotation
- All-Position Mount Totally Enclosed
- Flat Lead End for Shaft Down Applications

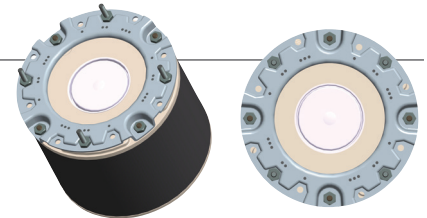
RESCUE® MOJAVE® 5.5" Diameter Motor Ratings								
Catalog Number	HP	RPM	Volts	Spd Taps	230V Cap	Amps	Shaft Length	Total Length
5464H*	1/3-1/6	825	208-230	2	7.5	1.9	5.0	10.3
5462H*	1/3-1/6	1075	208-230	2	5.0	2.6	5.0	9.6
5465H*	1/2-1/5	1075	208-230	2	10.0	3.0	5.0	10.6
5480H*	1/2-1/6	1075	460	2	10.0	1.3	5.0	11.1
5482H*	3/4-1/4	1075	208-230	2	15.0	4.0	5.0	11.9
5481H*	3/4-1/4	1075	460	2	15.0	2.2	5.0	11.9
RESCUE® EZ-FIT® MOJAVE® 4.8" Diameter Motor Ratings								
5440H	1/8-1/12	1075	208-230	1	5.0	0.8	3.0	8.0
5441H	1/4-1/6	1075	208-230	1	5.0	1.5	3.0	8.5
5442H	1/4-1/8	1625	208-230	1	5.0	1.5	3.0	8.5

*Note: Includes Rheem®† side shell holes.

EZ-FIT® Motor Mounting System (48" Diameter Only)

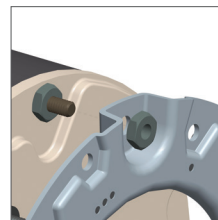
EZ-FIT® Motor Mounting System consolidates three bolt circle diameters into one adapter bracket that allows the end user to adjust bolt circle mounting diameter. Motor is shipped with studs in position for Clam Shell (● 4.3" BC)

Note: For shaft-up applications, remove bracket as described. Remove the (4) motor stator screws one at a time. Reinstall motor stator screw in the opposite direction, then reattach the bracket.

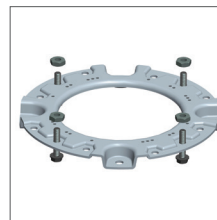


Directions for changing the mounting bolt circle diameter:

- Step 1:** Remove (4) nuts to detach bracket from motor
(See View "A")
- Step 2:** Remove (4) bolts & nuts and reposition into desired bolt circle dia. (See View "B" & Table "B")
- Step 3:** Reattach bracket and tighten nuts



View "A"

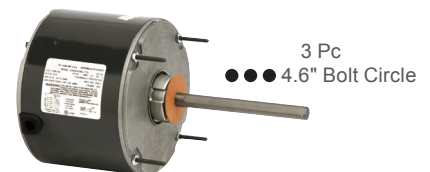
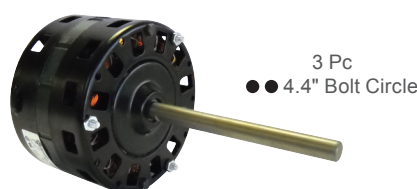


View "B"

BC Dia.	Hole Pattern
● 4.3"	
●● 4.4"	
●●● 4.6"	

Table "B"

EZ-FIT® Motor Mounting System for replacement of clam shell and stud mount designs



MOJAVE® Condenser Motors (Three Phase, 56 Frame)

Horsepower: 3/4–2 HP

Speed Range: Three Phase – 850 or 1140 RPM

Rated Voltages: 208– 230/460 Volts

Temp Rise: Designed for 70°C (158°F) Ambient –
Built to withstand extreme temperature conditions

Insulation: Class F Insulation – Thermal endurance to over 300°F

Enclosure: Open Dripproof Air Over (ODPAO)



MOJAVE® Motor
(Also available in belly band)

Product Features

- **Ball Bearings** – Durability for high temperature applications, for longer life than traditional sleeve bearings
- **Special Rotor Corrosion Protection** – Designed for longer life and sure start ups season after season.
- **Voltage Change Device**
- **Aegis®† Grounding Ring** (Kit 21 sold separately)

Three Phase Commercial MOJAVE® 6.3" Diameter Motor Ratings

Catalog Number	HP	RPM	Volts	Amps	Nema Frame	Shaft Length	Total Length	Mounting
1817H	3/4	1140	208-230/460	2.8/1.4	56Z	6.0	15.3	Belly Band
1826H	3/4	1140	208-230/460	2.8/1.4	56Z	6.0	15.3	Rigid Base
1828H	1	850	208-230/460	4.8/2.4	56Z	6.0	16.8	Belly Band
1833H	1	850	208-230/460	4.8/2.4	56Z	6.0	16.8	Rigid Base
1829H	1	850	575	1.7	56Z	6.0	16.8	Belly Band
1818H	1	1140	208-230/460	4.2/2.1	56Z	6.0	14.8	Belly Band
1820H	1	1140	208-230/460	4.2/2.1	56Z	6.0	14.8	Rigid Base
1832H	1 1/2	850	208-230/460	6.8/3.3	56Z	6.0	16.8	Belly Band
1831H	1 1/2	850	208-230/460	6.8/3.3	56Z	6.0	16.8	Rigid Base
1819H	1 1/2	1140	208-230/460	5.4/2.7	56Z	6.0	15.8	Belly Band
1821H	1 1/2	1140	208-230/460	5.4/2.7	56Z	6.0	15.8	Rigid Base
8987H	2	1140	208-230/460	7.6/3.7	56Z	6.0	16.8	Belly Band
1822H	2	1140	208-230/460	7.6/3.7	56Z	6.0	16.8	Rigid Base

Nidec
NIDEC MOTOR CORPORATION

8050 W. Florissant Avenue | St. Louis, MO 63136
Phone: 314-595-8000

† All marks shown within this document are properties of their respective owners.

Nidec Motor Corporation, © 2014; All Rights Reserved. U.S. MOTORS® is a registered trademark of Nidec Motor Corporation. Nidec Motor Corporation trademarks followed by the ® symbol are registered with the U.S. Patent and Trademark Office.

HVACR Aftermarket Customer Service
Phone: 855-487-6686 | Fax: 800-899-2887