


LIQUID CHARGER



Liquid charging is recommended when charging blends into refrigeration and air conditioning systems, and a liquid charger adapter is necessary for safe and fast liquid charging through the low pressure side of a system.

- The adapter connects to the cylinder valve or refrigerant can
- To protect the compressor, adapter orifice reduces liquid flow to a level below compressor capacity
- Eliminates the time and work of heating cylinders 

| UPC# | Description |
|-------|-------------------------------|
| 41123 | 1/4" Liquid charging adapter |
| 41124 | 5/16" Liquid charging adapter |
| 41132 | 1/4" "O" ring and orifice |
| 41138 | 5/16" "O" ring and orifice |

"O" RING LUBRICANT

To lubricate "O" rings in manifolds when pistons or "O" rings are being replaced. Use sparingly.



| UPC# | Description |
|-------|-------------------------------|
| 41118 | "O" ring lubricant (0.75 oz.) |

MANIFOLD PARTS KIT For Series 41, TITAN™, and BRUTE II™ Manifolds



| UPC# | Description |
|-----------------------|--|
| 41099 | Complete kit |
| 41105 | Box only with label |
| Kit contents/quantity | |
| 41041 | Yellow handle with screw - TITAN (4) |
| 41042 | Blue handle with screw - TITAN (3) |
| 41044 | Red handle with screw - TITAN (3) |
| 41048 | Handle screws (2) - Series 41/TITAN/BRUTE II (6 sets) |
| 41061 | Sight glass (1), retainer (1), gaskets (2) - BRUTE II/TITAN (4 sets) |
| 41090 | Handle screws (2) - Older style BRUTE (6 sets) |
| 41091 | Yellow handle with screw - BRUTE II (4) |
| 41092 | Blue handle with screw - BRUTE II (3) |
| 41094 | Red handle with screw - BRUTE II (3) |
| 41096 | Valve retaining nut - BRUTE II (4) |
| 41103 | 3/8" Piston - BRUTE II (8) |
| 41106 | Feed screw - BRUTE II (4) |
| 41134 | Feed screw - Series 41/TITAN (6) |
| 41135 | Valve retaining nut - Series 41/TITAN (6) |
| 41141 | Metal handle with screw - Series 41 (4) |
| 41142 | Handle screws (2) - Series 41/TITAN/BRUTE II (6 sets) |
| 41133 | 1/4" Piston - Series 41/TITAN (6) |

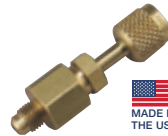
MANIFOLD CARRYING CASES




Heavy duty blue blow- molded cases are available in four different manifold/hose configurations. Includes handle and a long life top hinge. 

| UPC# | Description |
|-------|---|
| 40263 | Series 41 case - 12 1/4" x 8" x 4 1/4" |
| 40822 | Case for BRUTE™ II and Refrigeration System Analyzer (40815) - 6-1/2" x 17" x 14" |

MANIFOLD PARTICULATE FILTER

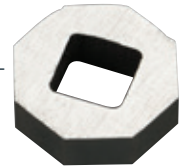


As manifold usage changes with more recovery change outs, more particulate matter is drawn through manifolds. Trap the particles with these fittings before they damage valve seats or pass into your recovery equipment. Replaceable, cleanable screens. 

| UPC# | Description |
|-------|-----------------------------------|
| 41119 | 1/4" Manifold particulate filter |
| 41120 | 3/8" Manifold particulate filter |
| 41121 | 1/2" Manifold particulate filter |
| 41122 | Replacement filter screen (5 pak) |

SIGHT GLASS TOOL


Designed to fit into the TITAN and BRUTE II sight-glass retainers, metal insert allows you to remove or tighten the retainer using a 1/4" drive wrench.



| UPC# | Description |
|-------|--|
| 41095 | Sight glass tool for TITAN/BRUTE  |


SINGLE GAUGE MANIFOLD

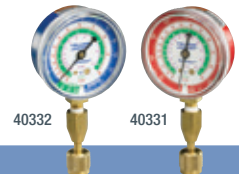
- Check pressure on lo-side of system
- Nylon seals and double "O" ring pistons

| UPC# | Description |
|-------|--|
| 40318 | Lo-side manifold R-12/22/502 |
| 40319 | Lo-side manifold R-134a/404A/407C |
| 40320 | Lo-side manifold R-410A |
| 40326 | Lo-side 1/4" valve R-32/410A |
| 40338 | Lo-side manifold R-600A |
| 40339 | Hi-side manifold R-600A/600/290 |
| 40340 | Lo-side manifold R-600A/600/290 |
| 40349 | Low-side manifold R-600a/290  |



SINGLE TEST GAUGES

Quick pressure checks - use lo- or hi-side gauge with quick coupler to attach directly to system or tanks. 



| UPC# | Description |
|--|--|
| Gauge with quick coupler and 12" hose - angle coupling | |
| 14811 | 12" Red hose 1/4" Male flare x 45° quick coupler |
| 14821 | 12" Blue hose 1/4" Male flare x 45° quick coupler |
| 19110 | Quick coupler only |
| Gauge with 19110 quick coupler for recovery tank pressure checks | |
| 40331 | Red pressure °F |
| 40332 | Blue compound °F |
| 40341 | Red pressure w/quick coupler & hose |
| 40342 | Blue compound w/quick coupler & hose |
| 19110 | Quick coupler only |
| 40334 | Red pressure °F; 0 - 800 psi; R-22/404A/410A |
| 40335 | Blue compound °F; 0 - 800 psi; R-22/404A/410A |
| 40344 | Red pressure °F; 0 - 800 psi; R-22/404A/410A; with quick coupler and hose |
| 40345 | Blue compound °F; 0 - 800 psi; R-22/404A/410A; with quick coupler and hose |

1. CHARGING SYSTEMS
2. GAUGES
3. RECOVERY MACHINES
4. VACUUM PUMP SYSTEMS
5. VACUUM AND CHARGING HOSES
6. HOSE ADAPTERS, VALVES & PARTS
7. WIRELESS AND ELECTRONIC INSTRUMENTS
8. LEAK DETECTORS AND MONITORS
9. HEATING INSTRUMENTS
10. SYSTEM TOOLS