

# Submittal Data Sheet



**Gobi II**  
Part # 3004045  
Part # 3004145

**Combi**  
Part # 3004046  
Part # 3004146

## Project Information

Job Name: \_\_\_\_\_ Submitted to: \_\_\_\_\_

Location: \_\_\_\_\_ For:  Reference  Approval  Construction

Date: \_\_\_\_\_ Submitted by: \_\_\_\_\_




Engineer: \_\_\_\_\_ Reference: \_\_\_\_\_

## Submittal Information

Approval: \_\_\_\_\_ Construction: \_\_\_\_\_

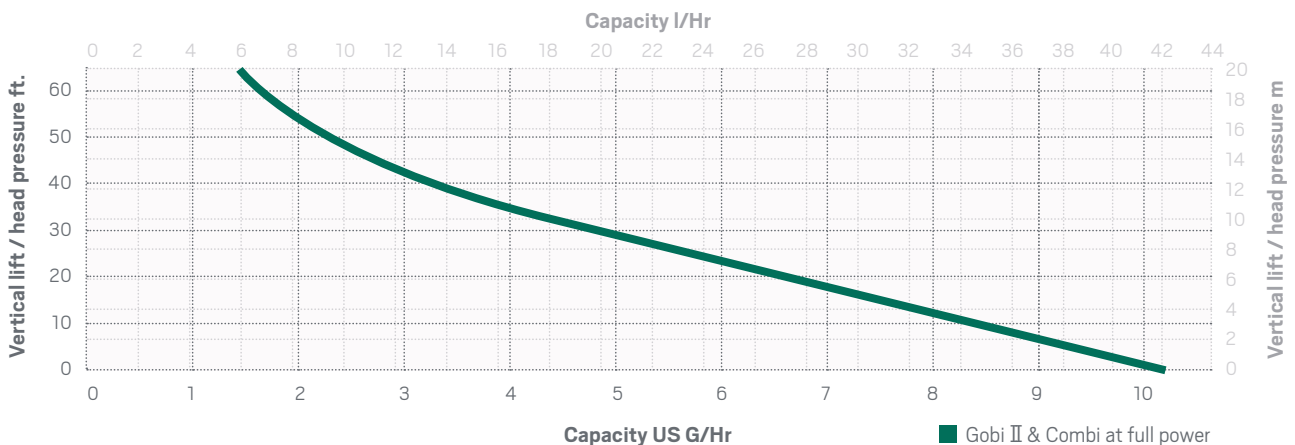
Date: \_\_\_\_\_ Unit #: \_\_\_\_\_

## Product Specifications

<b>Maximum flow rate:</b>	42 l/h (11 GPH)
<b>Maximum suction:</b>	3 m (10 ft.) self priming
<b>Maximum head:</b>	20 m (65.60 ft.)
<b>Maximum horizontal run:</b>	100 m (330 ft.) at 0 head and 0 suction
<b>Sound:</b>	20dBA at 1 m (3 ft.) / 19dBA at 1 m EN ISO 3744:2010
<b>Voltage:</b>	100 ~ 240 VAC 50/60 Hz auto sensing universal power input
<b>Power:</b>	8 watts during maximum operation at 110V
<b>Alarm relay:</b>	Interchangeable NO or NC, rated 250V, 10A Max or 28VDC, 10AMax
<b>Discharge tube:</b>	6.25 mm (1/4") ID, 1m (3.3 ft.) in length
<b>Color:</b>	Gobi II: RAL #9003 white, Combi: RAL #7040 Grey and RAL #1023 Yellow
<b>Protection:</b>	Class II double insulation, Fully potted, IP44      Class I, Fully potted, IP44
<b>Operation temp:</b>	Ambient 3°C to 40°C (37.5°F to 104°F) / Water 5°C to 25°C (41°F to 77°F)
<b>Compliance:</b>	Conforms to UL: 778 and Certified to CSA C22.2 #68   
<b>Installation range:</b>	6,000 – 120,000 Btu/H

Wiring diagrams available at: [www.condensate-pumps.com](http://www.condensate-pumps.com)

## Capacity



View installation video at [www.condensate-pumps.com](http://www.condensate-pumps.com)



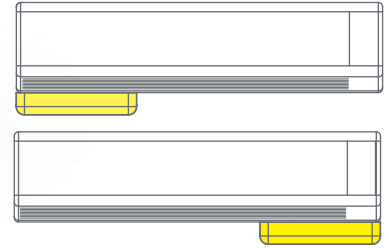
Download user manual at [www.condensate-pumps.com](http://www.condensate-pumps.com)

# Dimensions & Application

Gobi II Part # 3004045 Part # 3004145

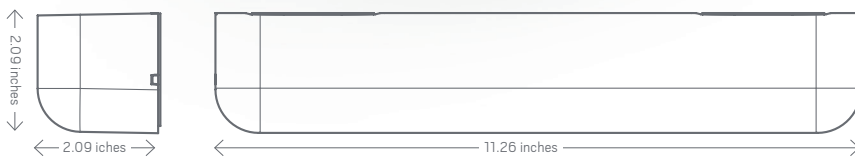


## Application

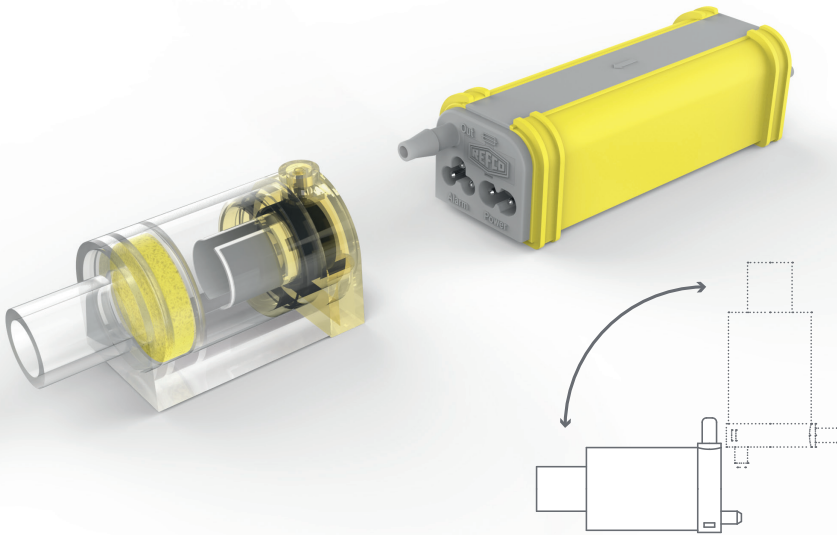


Gobi II pump can be mounted on the right or on the left side

## Dimensions pump

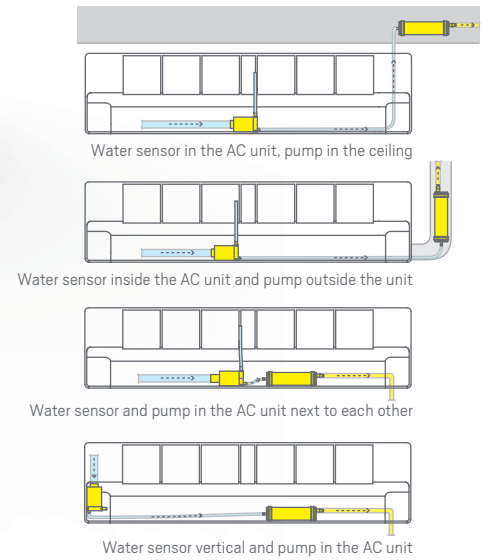


Combi Part # 3004046 Part # 3004146



Water sensor can be used horizontally or vertically.

## Application



## Dimensions pump



## Dimensions water sensor

