

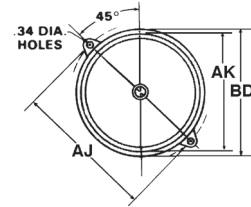
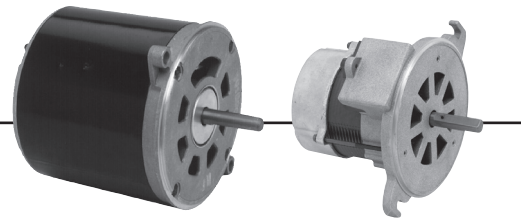
Split Phase and Capacitor Start Oil Burner Totally Enclosed When Mounted

APPLICATIONS:

Designed to meet manufacturer's requirements for oil burners.

FEATURES:

- 40°C Ambient
- 20" Leads, Located At 3 O'clock Viewed From End Opposite Shaft
- 1.0 Service Factor
- Reversible Rotation, Except As Noted
- Manual Reset Thermal Overload Protector
- 56N Frame Has 2 Holes And Screws For Mounting Outlet Box
- 56N Flange Is Enclosed, 48M And 48N Flange Are Ventilated
- Bearings Have All Angle Thrust System
- **Discount Symbol: DS-3HAC**



NEMA [†] Frame	Bolt Circle AJ	Flange Dia. AK	Outside Dia. BD
48M	6.75"	5.500"	6.25" max
48N, 56N	7.25"	6.275"	7.00" max

OEM Direct Replacements: Beckett^{®†}, Carlin^{®†}, Ducane^{®†}, Wayne Home^{®†}, (CWLE)

HP	RPM	Voltage	Catalog Number	List	Bearings	NEMA Frame	Amps	Shaft N	Shaft U	Protector	Total C	Ship Wt.	Notes
1/7	3450	115	3274	◆	Ball	48M	1.7	2.0	0.500	Auto	6.7	12	84, 86, H46, F
	3450	115	5866	◆	Ball	48M	2.3	2.0	.500	Man	7.2	8	78, 84
	2850	230/240	1011	◆	Ball	48M	1.3	2.0	0.500	Man	8.3	8	

Flange Mounted, Totally Enclosed, Non-Ventilated When Mounted, Without Base

HP	RPM	Voltage	Catalog Number	List	Bearings	NEMA Frame	Amps	Shaft N	Shaft U	Protector	Total C	Ship Wt.	Notes
1/8	3450	115	2097	◆	Ball	48N	2.4	2.0	.500	Man	7.1	8	78
	1725	115	3196	◆	Ball	48N	2.4	2.0	.500	Man	7.6	12	85, A
1/7	3450	115	3083	◆	Ball	48M	2.6	2.0	.500	Man	7.3	10	F
	3450	115	3466C	◆	Ball	48N	2.9	1.9	0.500	Man	7.8	8	78
1/6	1725	115	3252	◆	Ball	48N	3.1	2.0	.500	Man	7.6	14	78
1/4	3450	115	2302	◆	Ball	48N	3.7	2.0	.500	Man	8.3	15	78
1/3	3450	115	2319	◆	Ball	48N	4.8	2.0	.500	Man	10.5	15	78
	1725	115	3580	◆	Ball	56N	4.8	2.3	.500	Man	10.5	25	77, 78

◆ Refer to Motorboss for Pricing

Note 77: 5/8" Shaft Adapter And Key Packed With Motor
 Note 78: Class B Insulation System
 Note 84: Non-Reversible
 Note 85: Removable Face Plate

Note 86: PSC Motor, Capacitor Included
 Note A: Class A Insulation
 Note F: Class F Insulation
 Note H46: 3.7" Body

