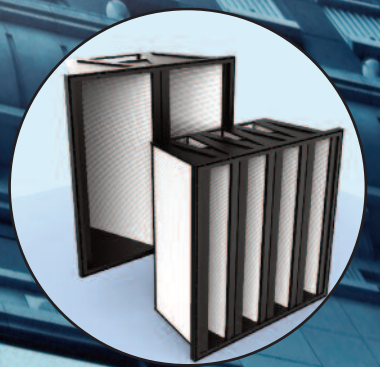
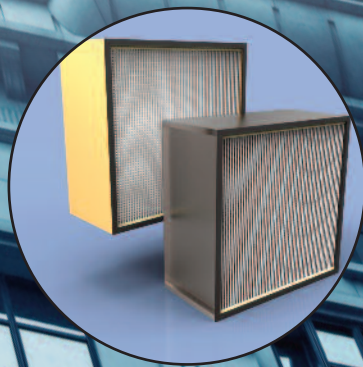
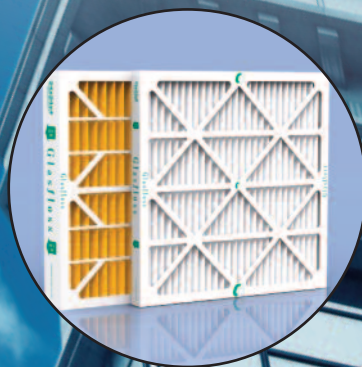
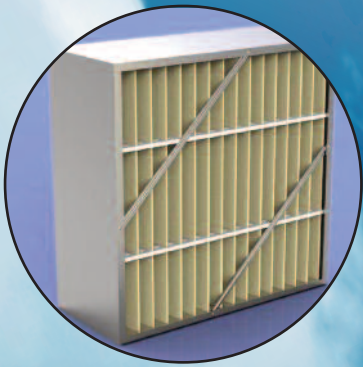


# Glasfloss<sup>®</sup> Industries

*Excellence in Air Filtration Since 1936*

## *Your National Source for Air Filtration*

*With five manufacturing facilities  
across the U.S. to serve you.*



*Glasfloss Industries – The Clear Choice Since 1936*



## GDS Disposable Panel Filters

The Glasfloss GDS disposable panel filter features an innovative, reinforced, "double strut" construction for excellent durability and performance in commercial, industrial, and residential applications. The design provides 10% greater open media area than traditional metal grill filters and offers excellent dust holding capacity. In addition, the design allows for easier disposal, eliminates sharp edges for safer handling and reduces carton weight for lower shipping costs. The GDS disposable panel filter is available in 1" and 2" depths in many standard sizes.

## Z-Line® Series Pleated Filters

The Z-Line® Series pleated filters offer improved performance for virtually every application. All Z-Line® filters feature fibers which do not absorb moisture and will not support microbial growth. Z-Line® ZL and HV filters achieve a MERV 10 rating and MR-11 filters achieve a MERV 11 rating per the ANSI/ASHRAE 52.2 Test Standard.

The Z-Line® Series products include:

ZL - Offers excellent performance and value for a wide range of applications.  
 HV - Ideal in high-velocity systems where maximum square footage of media is necessary.  
 MR-11 - Provides high performance with low pressure drop for energy efficiency.

## Bulk Media & Pre-Cut Pads

Glasfloss offers a variety of pre-cut pads and bulk media for prefilter or primary filter applications. Glasfloss pre-cut pads and bulk media come in a variety of fiberglass and 100% non-woven polyester grades that are designed for light to heavy dust-loading applications. Standard size pre-cut pads are packaged in a heavy-duty carton that allows quick access and keeps the media clean before installation. Service rolls are available and are packaged in an easy to use cardboard dispenser box.

## Air Cleaner Replacement Filters

Glasfloss Z-Line® Series Air Cleaner Replacement Filters offer convenient alternatives when replacement of the original filter is necessary. The Z-Line 500AB \*(Air Bear®), 700SG (Aprilaire®), 600GA (Goodman® and Amana®), 400HW (Honeywell F-100®) and HWR Series (Honeywell FC40R®) are replacement options that require no modification to the existing housing. All are rigidly constructed utilizing high quality MERV 10, MERV 11 or MERV 13 rated filtration media backed with a metal mesh to prevent sagging during operation.

## Poly Rings, Sleeves & Links

Glasfloss Poly Ring filters are made with the highest quality, multiple ply, polyester media for maximum depth loading and service life. The poly ring media is thermally sealed around a heavy-duty internal wire frame to ensure maximum durability. From an air entering filter for paint booths to upgrading a lower efficient filter installation, the Poly Ring panel filter is perfect for many filtration applications. Available in links and sleeves. PR-10 and PR-20 Poly Rings are rated MERV 8.

## Z-Line® Series Carbotron® Pleated Filters

The Z-line® Series Carbotron® pleated filter combines MERV 8 particulate filtration and carbon odor removal in a single filter unit with low pressure drop. The activated carbon used in the Carbotron® Pleat has millions of tiny openings that adsorb odorous gas molecules from the air, so clean fresh smelling air remains. The Carbotron® pleat comes in a variety of sizes to directly replace existing filters with no modification to the system.

## Z-Pak® & Z-Pak® GT Rigid Cell Filters

The Glasfloss Z-Pak® extended surface filter is designed for medium and high efficiency applications. The high density microfibre fibers consistently provide high performance ratings. The Glasfloss Z-Pak® is available in box or header styles and comes in a wide variety of sizes and efficiency ranges for commercial or industrial applications. Z-Pak® filters are ideal for variable air volume systems (VAV). The Z-Pak® GT is ideal for gas turbine engine, centrifugal compressor and other high velocity applications.

## Magna 600, 800, 900, HEPA, GT & HT Series

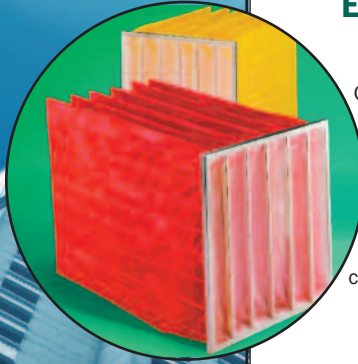
The Glasfloss Magna Series of rigid cell high efficiency and HEPA grade filters are designed to meet exact specifications in high efficiency systems. Available in a wide range of efficiencies, sizes, frame types and header combinations, the Glasfloss Magna Series combines state-of-the-art construction techniques with superior reliability offering maximum value. The Magna GT is ideal for gas turbine engine, centrifugal compressor and other high velocity applications. Magna HT filters are available for high temperature applications.



# THE CLEAR CHOICE SINCE 1936

## Excel® & Purapak® Medium & High Efficiency Bag Filters

Glasfloss offers a complete line of synthetic and fiberglass extended surface media bag filters to meet a wide range of applications. Glasfloss bag filters are rigidly constructed utilizing an exclusive internal header design that provides dependable performance. Both synthetic and fiberglass bag filters are available in a wide variety of efficiencies in standard and special sizes.



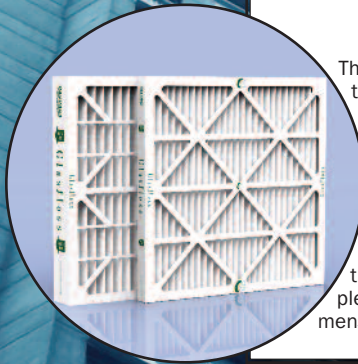
## Quad & Cube Polyester Filters

The Glasfloss line of polyester bag filters offers medium efficiency performance for a wide range of applications. The rigid, self-seal design of these filters helps prevent air bypass and allows the filters to operate under adverse conditions, especially where high humidity is present. Glasfloss Cube and Quad 440 filters feature a two-stage media for maximum efficiency and service life. The Glasfloss Quad 420 features a single stage media and is less restrictive to air flow.



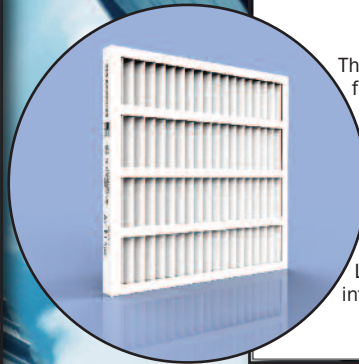
## Z-Line® Series MR-13 Pleated Filters

The Z-Line® MR-13 Series pleated air filter features the latest in media technology to achieve MERV 13 while maintaining low pressure drop and good service life. The Z-Line® Series MR-13 pleat is optimized for "LEED" compliance in new and existing buildings as well as providing a cost-effective upgrade from lower efficiency pleated filters for a variety of commercial and industrial applications. The Z-Line® Series MR-13 pleat is available in many standard face dimensions in 1", 2" and 4" depths.



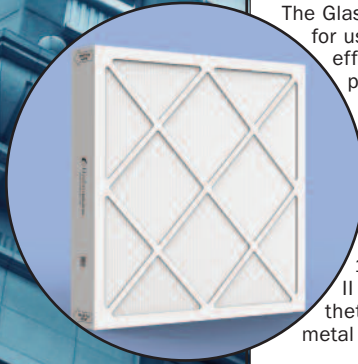
## Z-Line® Series ZXP Pleated Filters

The Z-Line® Series ZXP self-supported pleated filters offer MERV 10 efficiency with superior durability and low pressure drop. The Z-Line® ZXP feature a uniform 100% synthetic, self-supporting media design that achieves a MERV 10 per the ANSI/ASHRAE 52.2 Test Standard. The Z-Line® ZXP are 100% incinerable since there are no metal parts used within the construction. The Z-Line® ZXP incorporate patented double wall internal torsion box technology.



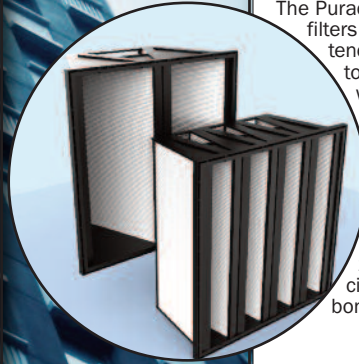
## Puracell® II Mini-Pleat Series

The Glasfloss Puracell® II Mini-Pleat Filter is ideal for use in applications where a high degree of efficiency is required in a 2" and 4" mini-pleat design. The Puracell® II offers unique advantages over traditional filters which include low cost, reduced weight and size and less impact on landfills. The Puracell® II fiberglass media is available in standard and special sizes in MERV 11, 13, 14 & 15 efficiencies, while Puracell® II-S synthetic media is available in MERV 11, 13 and 15 efficiencies. The Puracell® II M & MH fiber Series and M-S MH-S synthetic Series are available where heavy-duty metal frame construction is required.



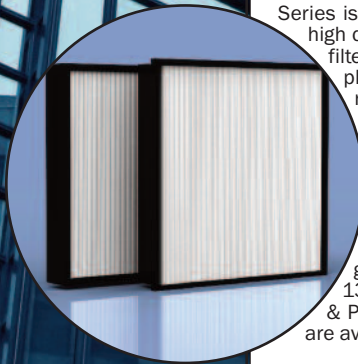
## Puracell® VP Mini-Pleat Series

The Puracell® VP Series extended surface mini-pleat filters offer high efficiency particulate removal, extended service life and extremely low resistance to air flow. The filters incorporate a lightweight, high-impact polystyrene framework for strength and durability in demanding commercial and industrial applications. The Puracell® VP and VPX Series are available in MERV 11, 13, 14 and 15. The VP Series is also available in MERV 16 and 99.97% HEPA grade. The VP-S and VPX-S synthetic Series are available in MERV 11, 13 and 15 efficiencies. VP-GA High-Efficiency Gas Adsorber filters with activated carbon are also available.



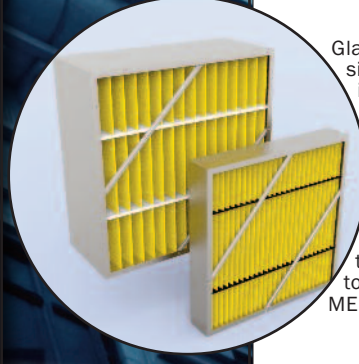
## Puracell® II P Mini-Pleat Series

The Glasfloss Puracell® II P 4" Plastic Frame Mini-Pleat Series is designed for use in applications where a high degree of efficiency is required in a 4" deep filter. The filters combine state-of-the-art mini-pleat construction techniques with superior reliability to offer maximum value for commercial and industrial applications. Additionally, the Puracell® II P Series offers unique advantages over the traditional 12" rigid box filter including lower freight costs, reduced storage area requirements and less impact on landfills. The Glasfloss Puracell® II P & PH filters incorporate fiberglass media and are available in MERV 11, 13, 14 & 15 efficiencies, and Puracell® II P-S & PH-S filters incorporate synthetic media and are available in MERV 11, 13 & 15 efficiencies.



## Z-Pak® HC Series High Capacity Rigid Cell Filters

Glasfloss Z-Pak® HC rigid cell filters are designed for high efficiency applications and incorporate two individual filtration media layers that provide very low initial pressure drop in addition to a high dust holding capacity for superior service life. The Z-Pak® HC's total rigid construction makes it ideal for variable air volume systems (VAV), where changes in air flow can have an adverse effect on non-rigid type filters. Z-Pak® HC filters are designed to handle high airflow and are available in MERV 14 performance.





# Over 85 years of Excellence

Glasfloss Industries is the oldest American owned and operated manufacturer of HVAC filters. Established in 1936, Glasfloss has grown from a small, special-size air filter fabricator in New York City to a full-line manufacturer with plants strategically located throughout the United States.

After decades of serving the air filtration industry, Glasfloss has built a worldwide reputation for quality products which provide reliable performance and superior value. Our unique ability to work with customers on special product needs and requests is the result of over 85 years of manufacturing experience and our continuing commitment to research and development.

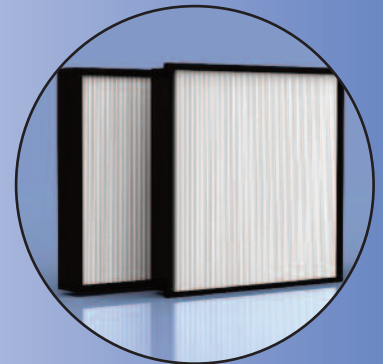
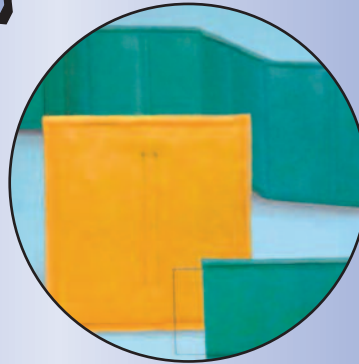
Today with new technologies and expanding production capabilities, Glasfloss leads the industry the same way it started more than 85 years ago: by furnishing the special needs of the air filtration industry with quality products, competitive prices, and the best lead times in the industry.

From Disposable Panel Filters to HEPA filters, Glasfloss is the Clear Choice for all of your air filtration needs.



Glasfloss manufactures a variety of medium and high efficiency air filters which can be specified for LEED certification applications. For specific information on these products, please contact your local Glasfloss Sales Representative.

## Five manufacturing facilities across the U.S. to serve you.



DISTRIBUTED BY:



"Serving You With Locations Throughout The Nation"

CORPORATE HEADQUARTERS:  
420 E. Daniieldale Rd. • DeSoto, Texas 75115  
(214) 741-7056 • Fax (800) 435-8377

[www.glasfloss.com](http://www.glasfloss.com)

Bulletin No. GBR - 3-2-2022



Glasfloss has a policy of uninterrupted research, development and product improvement and reserves the right to change design and specifications without notice.