

## Regular Spring Nut

- For all "A" series channel & inserts



ITEM NO.	DESCRIPTION	STD QTY	U M
19546	3/8" Regular-Spring Nut	10	EA
19547	1/2" Regular-Spring Nut	10	EA

## Hanger Rod

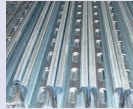
- Continuous threaded



ITEM NO.	DESCRIPTION	STD QTY	U M
19552	3/8" x 10' Threaded Rod (16 TPI)	200	FT
19553	1/2" x 10' Threaded Rod (13 TPI)	120	FT

## 14 Gauge Metal Framing Channels

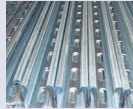
- Pre-galvanized
- 14 gauge material
- Standard length tolerance  $\pm 1/8$ "
- Cold formed from hot rolled pickled & oiled strip steel
- Slots on 2" centers



ITEM NO.	DESCRIPTION	STD QTY	U M
19543	1-5/8" x 1-5/8" x 10' Half Slot	500	FT
19544	1-5/8" x 13/16" x 10' Half Slot	500	FT

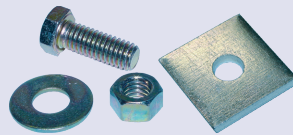
## 12 Gauge Metal Framing Channels

- Pre-galvanized
- 12 gauge material
- Standard length tolerance  $\pm 1/8$ "
- Cold formed from hot rolled pickled & oiled strip steel
- Slots on 2" centers



ITEM NO.	DESCRIPTION	STD QTY	U M
19672	1-5/8" x 1-5/8" x 10' Solid	500	FT
19673	1-5/8" x 1-5/8" x 10' Half Slot	500	FT

## Strut Hardware



ITEM NO.	DESCRIPTION	STD QTY	U M
19602	3/8" x 1" Bolt	50	EA
19603	1/2" x 1" Bolt	50	EA
19604	3/8" Flat Washer	100	EA
19605	1/2" Flat Washer	100	EA
19606	3/8" Hex Nut	100	EA
19607	1/2" Hex Nut	100	EA
19609	3/8" Flat Fastener (1-1/2")	100	EA
19610	1/2" Flat Fastener (1-1/2")	100	EA

# Motor Run Capacitors



Temperature rating -13F to 158F (-25C to 70C)

Aluminium cans with steel covers

Biodegradable, non-polluting oil (non-P.C.B.)

Standard: IEC 252 (1975), UL 810

50/60 Hz

Oval or Round

Single or Dual Capacitance

370 VAC or 440 VAC



**See Pages 65 - 68 For More Information**