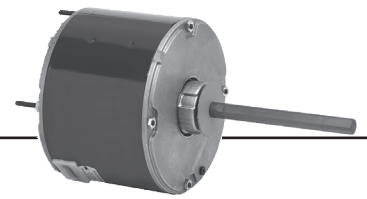


Permanent Split Capacitor Condenser Fan 5.6" Diameter, Totally Enclosed Air Over (TEAO)

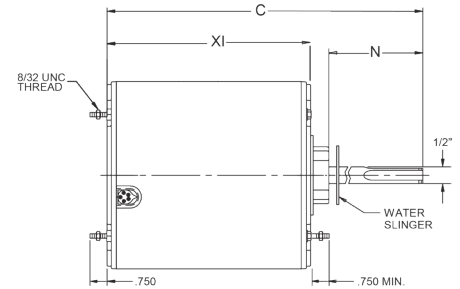


APPLICATIONS:

Residential and commercial condenser unit fan motors to meet manufacturer's requirements.

FEATURES:

- 140°F (60°C) Ambient Design
- Bearings Have All Angle Thrust System
- Class B Insulation
- Suitable for Use With 370V Capacitors
- Extended Studs
- 30" Leads
- Hubless Lead End
- Drain Holes Both Ends
- Reversible Rotation (Unless otherwise noted)
- Automatic Reset Thermal Overload Protector
- Continuous Duty
- 208v will not be marked on DOE regulated spread-voltage motors. Refer to online data
- **Discount Symbol: DS-3HAC**



Stud Mount, Without Capacitor, 60°C, All Angle Mount

HP	RPM	Voltage	Catalog Number	List	Bearings	Cap. MFD	Amps	Shaft N	Shell XI	Total C	Ship Wt.	Notes	OEM
1/12	1100	208-230	3401	◆	SAB	5.0	0.67	1.6	3.6	5.7	8	H20	CA
1/10	825	208-230	1871	◆	SAB	3.0	1.0	6.0	3.8	10.4	12		
	1100	208-230	3402	◆	SAB	5.0	0.8	1.6	3.6	5.7	9	H20	CA
1/8	825	208-230	1872	◆	SAB	5.0	0.78	6.0	4.1	10.6	12	72	
	825	200-230	1902	◆	Ball	5.0	0.74	1.9	4.4	6.2	11	H16	TR
	825	208-230	5456	◆	SAB	5.0	1.2	3.8	4.1	7.8	10	72	RH
	1650	200-230	4895	◆	Ball	4.0	0.8	2.0	3.6	5.6	7		
1/6	825	460	1412	◆	Ball	5.0	0.5	4.7	4.6	9.3	18		
	825	208-230	1873	◆	SAB	5.0	1.0	6.0	4.1	10.6	12	72	
	825	208-230	5457	◆	SAB	7.5	1.2	3.75	4.6	8.3	12	72	RH
	825/2	208-230	8673	◆	SAB	5.0	1.0	6.0	4.4	10.9	17		
	1075	208-230	1859	◆	SAB	5.0	1.0	4.5	3.8	8.8	10		
1/5	1500	208-230	3405	◆	Ball	5.0	0.85	1.6	4.3	6.2	7	H20	CA
	825	200-230	1903	◆	Ball	7.5	0.93	2.25	5.1	7.3	15	H16	TR
	1075	208-230	5450	◆	SAB	3.0	1.3	3.7	3.8	7.5	10	72, H16	RH
	1075	208-230	5454	◆	SAB	3.0	1.7	3.7	3.8	8.1	10	72	RH
1/4-1/8	825	208-230	1874	◆	SAB	5.0	2.0	6.0	4.3	10.9	11	72	
1/4	825	460	1880	◆	Ball	5.0	1.0	6.0	5.1	11.6	15		
	825	575	1276	◆	Ball	5.0	0.7	5.0	4.9	10.4	10		
	850	208-230	1743	◆	SAB	5.0	1.5	2.75	4.6	7.3	17	H20	YK
	825/2	208-230	8674	◆	SAB	7.5	1.5	6.0	4.6	11.1	15		
	1075	208-230	1860	◆	SAB	5.0	1.5	4.5	4.6	9.6	10	72	
	1075	208-230	1876	◆	Ball	5.0	1.5	4.5	4.6	9.6	11		
	1075	460	3736	◆	Ball	7.5	0.8	6.0	4.6	11.1	14		
	1100	208-230	3404	◆	SAB	5.0	1.8	1.6	4.1	6.2	11	H20	CA
	1625	208-230	1890	◆	SAB	5.0	1.4	5.0	4.3	9.9	12		

CA = Carrier RH = Rheem YK = York TR = Trane

◆ Refer to Motorboss for Pricing

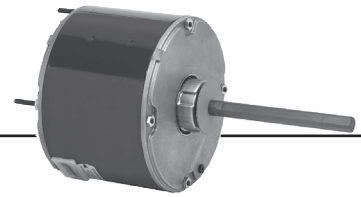
Note 72: Includes 4 Holes in Shell for Rheem Mount

Note H16: CCWLE rotation only

Note H20: CWLE rotation only



Permanent Split Capacitor Condenser Fan 5.6" Diameter, Totally Enclosed Air Over (TEAO)



(continued)

HP	RPM	Voltage	Catalog Number	List	Bearings	Cap. MFD	Amps	Shaft N	Shell XI	Total C	Ship Wt.	Notes	OEM
1/3-1/5	825	208-230	1875	◆	SAB	7.5*	2.4-1.4	6.0	4.5	11.6	15	72	
1/3	825/2	208-230	8675	◆	SAB	7.5	2.0	6.0	5.4	11.9	18		
	825	460	1881	◆	Ball	7.5	1.0	6.0	5.6	12.1	18		
	825	575	1296	◆	Ball	7.5	1.1	5.0	5.4	10.9	17		
	1075	208-230	1861	◆	SAB	7.5	2.0	4.5	4.6	10.1	14	72	
	1075	208-230	5455	◆	SAB	5.0	2.0	3.7	4.1	8.3	13	72	RH
	1075	208-230	1877	◆	Ball	7.5	2.0	4.5	4.6	10.1	14		
	1075	460	3737	◆	Ball	7.5	1.3	6.0	5.4	11.9	17		
	1075/2	208-230	8670	◆	SAB	7.5	2.2	6.0	4.8	11.4	16	71	
1/3-1/6	1625	208-230	1891	◆	Ball	7.5	1.6	5.0	4.6	10.1	11		
	825/2	208-230	5464	◆	Ball	10 / 7.5	1.9 / 1.2	4.5	5.3	10.3	18	72	
	1075	208-230	3322	◆	SAB	10.0	1.8	5.0	4.6	9.6	13	72	
	1075	208-230	3323	◆	Ball	7.5	2.0	5.0	4.3	9.3	13	72	
1/3	1075/2	208-230	5462	◆	Ball	7.5 / 5.0	2.6 / 1.8	5.0	4.6	9.6	15	72	
	1075	460	LX7922	◆	Ball	10.0	1.3	3.5	5.3	9.3	15	H16	
1/2	825	208-230	1870	◆	SAB	12.5	2.8	6.0	5.8	12.4	22		
	825	460	1882	◆	Ball	10.0	1.6	6.0	6.3	12.9	21		
	1075	208-230	1862	◆	SAB	10.0	3.1	4.5	5.3	10.3	16	72	
	1075	208-230	1878	◆	Ball	10.0	3.1	4.5	5.3	10.3	17		
	1075	208-230	3324	◆	SAB	15.0	2.6-1.7	5.0	5.8	10.8	16		
	1075	208-230	3325	◆	Ball	15.0	2.6-1.7	5.0	5.8	10.8	16		
	1075	460	3738	◆	Ball	10.0	1.5	6.0	5.9	12.4	19		
	1075	575	1098	◆	SAB	10.0	1.0	5.0	6.0	11.4	20		
	1075/2	208-230	8671	◆	SAB	10.0	2.9	6.0	5.8	12.4	21	71	
	1625	208-230	1892	◆	SAB	5.0	3.0	5.0	5.1	10.6	16		
	1625	575	1198	◆	Ball	7.5	1.0	6.0	5.3	11.9	17		
1/2-1/5	1075/2	208-230	5465	◆	Ball	12.5 / 10.0	3.0 / 1.3	4.5	5.3	10.3	15	72	
3/4	1075	208-230	1868	◆	SAB	10.0	4.7	5.0	5.8	11.4	21		
	1075	208-230	1879	◆	Ball	10.0	4.7	6.0	5.8	12.3	21		
	1075	460	3742	◆	Ball	10.0	2.0	6.0	6.3	12.9	21		
	1060	575	1099	◆	SAB	12.5	1.25	5.0	6.0	11.4	18		
1	1075	460	1409	◆	Ball	25.0	2.5	6.0	6.8	13.4	25		

RH = Rheem

◆ Refer to Motorboss for Pricing

Note 71: 1.5" Stud Ext., Shaft End only, 104°F (40°C) Ambient, Double Flats

Note 72: Includes 4 Holes in Shell for Rheem Mount

Note H16: CCWLE Rotation Only

*Uses 440V capacitor.



BRAKEMOTORS
 GENERAL PURPOSE SINGLE PHASE
 HVAC
 WASHDOWN
 AGRICULTURE
 COMMERCIAL PUMP MOTORS
 CLOSE COUPLED PUMP MOTORS
 FIRE PUMP MOTORS
 POOL & SPA MOTORS
 RESIDENTIAL WATER PUMP
 ELEVATOR GATE & DOOR