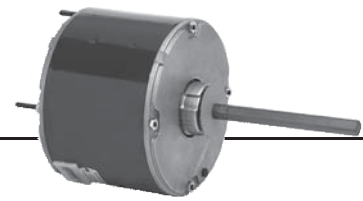


# Permanent Split Capacitor Condenser Fan 5.6" Diameter, Totally Enclosed, Air Over (TEAO)

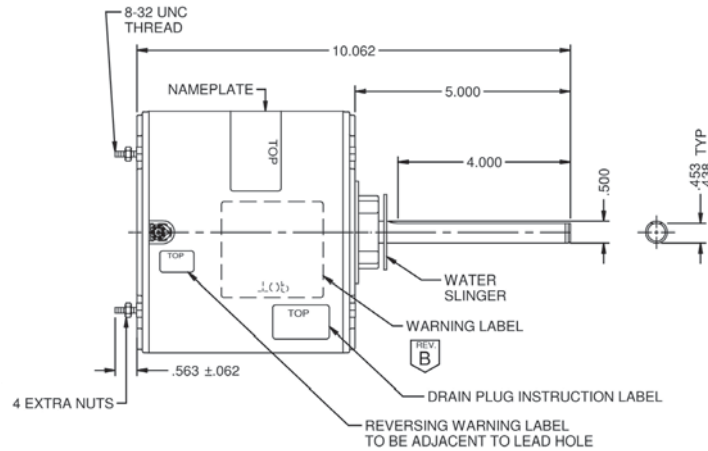


## APPLICATIONS:

Residential and commercial condensing unit fan motors to meet manufacturer's requirements.

## FEATURES:

- 140°F (60°C) Ambient Design
- Bearings have All Angle Thrust System
- Class B Insulation
- Designed for use with 370V Capacitors
- Extended Studs
- 36" Leads
- Hubless Lead End
- Drain Holes Both Ends
- Reversible Rotation
- Automatic Reset Thermal Overload Protector
- Continuous Duty



## Stud Mount, Without Capacitor, 60°C, All Angle Mount

HP	RPM	Voltage	Catalog Number	Bearings	Cap. MFD	Amps	Shaft N	Shell XI	Total C	Rotation	Ship Wt.	Notes	OEM
1/12	1100	208-230	3401	SAB	5.0	0.7	1.6	4.1	5.7	CWLE	9	H20	CA
1/10	825	208-230	1871	SAB	3.0	1.0	6.0	3.8	10.4	-	10		
	1100	208-230	3402	SAB	5.0	0.8	1.6	4.1	5.7	-	9		CA
1/8	825	208-230	1872	SAB	5.0	0.8	6.0	4.1	10.6	-	11	72	
	825	200-230	1902	Ball	5	.74	1.9	4.4	6.2	CCWLE	10.7		TR
	825	208-230	5456	SAB	5.0	1.2	3.8	4.1	7.8	-	11	72	RH
1/6	825	208-230	1873	SAB	5.0	1.0	6.0	4.1	10.6	-	12	72	
	825	208-230	5457	SAB	7.5	1.2	3.8	4.6	8.3	-	13	72	RH
	825/2	208-230	8673	SAB	5.0	1.0	6.0	4.4	10.9	-	14		
1/5	1075	208-230	1859	SAB	5.0	1.0	5.0	3.8	9.4	-	11		
	1500	208-230	3405	Ball	5.0	0.8	1.6	4.3	6.2	-	9	H20	CA
	825	200-230	1903	Ball	7.5	.93	2.3	5.1	7.3	CCWLE	15.0		TR
1/5	1075	208-230	5450	SAB	3.0	1.3	3.7	3.8	7.5	-	11	72, H16	RH
	1075	208-230	5454	SAB	3.0	1.7	3.7	3.8	8.1	-	11	72	RH
	1/4-1/8	825	208-230	1874	SAB	5.0	2.0	6.0	4.3	10.9	-	13	72
1/4	825	460	1880	Ball	5.0	1.0	6.0	5.1	11.6	-	14		
	825	575	1276	Ball	5	0.7	5.0	4.5	9.9	Rev.	10		
	850	208-230	1743	SAB	5.0	1.5	2.8	4.6	7.3	-	10	H20	YK
	825/2	208-230	8674	SAB	7.5	1.5	6.0	4.6	11.1	-	15		
	1075	208-230	1860	SAB	5.0	1.5	5.0	4.1	9.6	-	12		
	1075	208-230	1876	Ball	5.0	1.5	5.0	4.1	9.6	-	11		
COMMERCIAL DUTY PUMP	1075	460	3736	Ball	7.5	0.8	6.0	4.6	11.1	-	12		
	1100	208-230	3404	SAB	5.0	1.8	1.6	4.6	6.2	-	12	H20	CA
	1625	208-230	1890	SAB	5.0	1.4	5.0	4.3	9.9	-	12		

CA = Carrier IC = ICP RH = Rheem YK = York TR = Trane

Note 72: Includes 4 Holes in Shell for Rheem Mount

Note H16: CCWLE rotation only

Note H20: CWLE rotation only

\*Uses 440V capacitor.

† All marks shown within this document are properties of their respective owners.

