

CPVC Fittings - 90° Elbows S x S

- Hot & cold water pressure lines
- NSF Standard 61 certified for drinking water
- ASTM E 84 Tested water-filled pipe & fittings for return air plenums – Meets 25/50 flame & smoke limits



ITEM NO.	DESCRIPTION	STD QTY	CTN QTY	U M
0444	1/2" CPVC 90° Elbow S x S	100	1000	EA
16328	3/4" CPVC 90° Elbow S x S	50	500	EA

CPVC Fittings - 90° Street Elbows S x S

- Hot & cold water pressure lines
- NSF Standard 61 certified for drinking water
- ASTM E 84 Tested water-filled pipe & fittings for return air plenums – Meets 25/50 flame & smoke limits



ITEM NO.	DESCRIPTION	STD QTY	CTN QTY	U M
0450	1/2" CPVC Street Elbow S x S	100	500	EA
16331	3/4" CPVC Street Elbow S x S	50	250	EA

CPVC Fittings - 45° Elbows S x S

- Hot & cold water pressure lines
- NSF Standard 61 certified for drinking water
- ASTM E 84 Tested water-filled pipe & fittings for return air plenums – Meets 25/50 flame & smoke limits



ITEM NO.	DESCRIPTION	STD QTY	CTN QTY	U M
0446	1/2" CPVC 45° Elbow S x S	100	500	EA
16329	3/4" CPVC 45° Elbow S x S	50	250	EA

CPVC Fittings - Couplings S x S

- Hot & cold water pressure lines
- NSF Standard 61 certified for drinking water
- ASTM E 84 Tested water-filled pipe & fittings for return air plenums – Meets 25/50 flame & smoke limits



ITEM NO.	DESCRIPTION	STD QTY	CTN QTY	U M
0440	1/2" CPVC Coupling S x S	100	1000	EA
16325	3/4" CPVC Coupling S x S	50	500	EA

CPVC Fittings - Male Adapters S x MPT

- Hot & cold water pressure lines
- NSF Standard 61 certified for drinking water
- ASTM E 84 Tested water-filled pipe & fittings for return air plenums – Meets 25/50 flame & smoke limits



ITEM NO.	DESCRIPTION	STD QTY	CTN QTY	U M
0442	1/2" CPVC Male Adapter S x MPT	100	100	EA
16327	3/4" CPVC Male Adapter S x MPT	50	500	EA

CPVC Fittings - Female Adapters S x FPT

- Hot & cold water pressure lines
- NSF Standard 61 certified for drinking water
- ASTM E 84 Tested water-filled pipe & fittings for return air plenums – Meets 25/50 flame & smoke limits



ITEM NO.	DESCRIPTION	STD QTY	CTN QTY	U M
13886	1/2" CPVC Female Adapter S x FPT	100	500	EA
16326	3/4" CPVC Female Adapter S x FPT	50	250	EA

CPVC Fittings - Tee S x S x S

- Hot & cold water pressure lines
- NSF Standard 61 certified for drinking water
- ASTM E 84 Tested water-filled pipe & fittings for return air plenums – Meets 25/50 flame & smoke limits



ITEM NO.	DESCRIPTION	STD QTY	CTN QTY	U M
0449	1/2" CPVC Tee S x S x S	100	500	EA
16330	3/4" CPVC Tee S x S x S	50	250	EA

CPVC Fitting - Bushing S x S

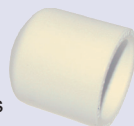
- Hot & cold water pressure lines
- NSF Standard 61 certified for drinking water
- ASTM E 84 Tested water-filled pipe & fittings for return air plenums – Meets 25/50 flame & smoke limits



ITEM NO.	DESCRIPTION	STD QTY	CTN QTY	U M
16332	3/4" x 1/2" CPVC Bushing	25	500	EA

CPVC Fittings - Cap

- Hot & cold water pressure lines
- NSF Standard 61 certified for drinking water
- ASTM E 84 Tested water-filled pipe & fittings for return air plenums – Meets 25/50 flame & smoke limits



ITEM NO.	DESCRIPTION	STD QTY	CTN QTY	U M
16333	3/4" CPVC Cap	50	250	EA

STANDARDS & BASES
EQUIPMENT
DRAIN PLUMBING & CHEMICALS
CONDENSATE
SEALANTS
LUBES
VENTING
ELECTRONICS &
ELECTRICAL
TOOLS
MISCELLANEOUS
INDEX