

The BFK is a solid core, bi-directional, liquid line filter drier for heat pump applications for use with CFC, HCFC, and HFC refrigerants.

### Features

- Available 5 to 30 cu. in. size
- Internal check valves allow flow and filtration in either direction, eliminates need for external check valves
- High moisture and acid removal capacity
- Corrosion resistant epoxy powder paint finish
- Approved for POE oils with Copeland™ compressors



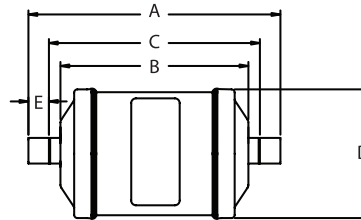
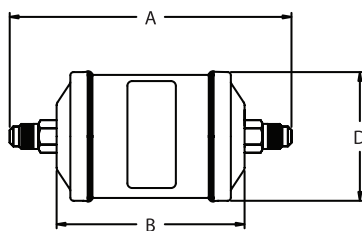
### Specifications

- Desiccant Blend: optimized for high water capacity and acid capacity
- Filtration: 40 microns
- Maximum working pressure: 680 psig
- UL/CUL file number: SA 3124

**Nomenclature** example: BFK 165S

BFK	16	5	S
Series	Unit Size (in cu. in.)	Connection Size (in 1/8")	S = ODF connections (omit for SAE)

### Dimensional Data



### Ordering Information

PCN	Description	Connection	Dimensions (in)					Weight (lbs)		
			A	B	C	D	E			
062300	BFK-052	1/4 SAE	4.84	3.03	3.47	2.64	0.99	0.35		
062425	BFK-052S	1/4 ODF	4.16							
062254	BFK-053	3/8 SAE	5.15							
062255	BFK-053S	3/8 ODF	4.49	3.84	4.38			2.64	0.99	0.62
058597	BFK-0825S	5/16 ODF	5.02							
043321	BFK-083	3/8 SAE	5.96							
043323	BFK-083S	3/8 ODF	5.31	3.84	4.50	2.64	0.99			0.40
043325	BFK-084	1/2 SAE	6.184							
043327	BFK-084S	1/2 ODF	5.40							
043728	BFK085	5/8 SAE	6.64	4.70	4.40			3.14	2.08	0.50
043730	BFK-085S	5/8 ODF	5.62							
043330	BFK-163	3/8 SAE	6.824							
043333	BFK-163S	3/8 ODF	6.17	4.70	5.37	3.14	2.08			0.40
043335	BFK-164	1/2 SAE	7.04							
043337	BFK-164S	1/2 ODF	6.26							
043732	BFK-165	5/8 SAE	7.50	4.70	5.26			3.14	2.08	0.50
043734	BFK-165S	5/8 ODF	6.48							
058589	BFK-167S	7/8 ODF	7.06							
063076	BFK303	3/8 SAE	9.674	7.55	7.77	3.14	0.35			0.62
063077	BFK-303S	3/8 ODF	9.01							
063078	BFK-304	1/2 SAE	9.89							
063079	BFK-304S	1/2 ODF	9.05	7.55	7.79			3.14	0.35	0.63
063080	BFK-305	5/8 SAE	10.35							
063081	BFK-305S	5/8 ODF	9.32							
063082	BFK-306	3/4 SAE	10.67	7.55	7.81	3.14	0.35			0.76
063083	BFK-306S	3/4 ODF	9.74							
063084	BFK-307S	7/8 ODF	9.91							
063451	BFK-309S	1 1/8 ODF	10.27	7.55	7.98			3.14	0.35	1.06

## BFK Liquid Line Bi-Directional Filter Drier

Description	Connection	Flow Capacity Tons @ 1 psi $\Delta P$ <sup>1,4</sup> (For kW, multiply tons by 3.5)				Water Capacity <sup>2</sup> Drops Of Water <sup>3</sup>							
		R-22		R-410A		R-407C		R-410A		R-744			
		75°F	125°F	75°F	125°F	75°F	125°F	75°F	125°F	-10°F	25°F		
BFK-05 2	1/4 SAE	1.6	1.6	1.6	2.1	73	66	58	42	39	35	81	89
BFK-05 2S	1/4 ODF	2.2	2.2	2.2	2.8								
BFK-05 3	3/8 SAE	3.5	3.5	3.4	4.5								
BFK-05 3S	3/8 ODF	4.0	4.0	3.9	5.2								
BFK-08 3	3/8 SAE	4.5	4.5	4.4	5.8	159	144	106	79	85	75	136	150
BFK-08 3S	3/8 ODF	5.1	5.1	5.0	6.6								
BFK-08 4	1/2 SAE	6.4	6.4	6.3	8.3								
BFK-08 4S	1/2 ODF	6.7	6.7	6.6	8.6								
BFK-08 5	5/8 SAE	7.2	7.2	7.0	9.3								
BFK-08 5S	5/8 ODF	8.1	8.1	7.9	10.4								
BFK-16 3	3/8 SAE	4.6	4.6	4.5	5.9	323	294	237	179	178	160	221	260
BFK-16 3S	3/8 ODF	5.2	5.2	5.1	6.7								
BFK-16 4	1/2 SAE	7.7	7.7	7.6	9.9								
BFK-16 4S	1/2 ODF	8.1	8.1	7.9	10.4								
BFK-16 5	5/8 SAE	8.3	8.3	8.1	10.7								
BFK-16 5S	5/8 ODF	8.7	8.7	8.5	11.2								
BFK-30 3S	3/8 ODF	5.8	5.8	5.7	7.5	585	532	452	345	415	293	453	533
BFK-30 4	1/2 SAE	7.6	7.6	7.5	9.8								
BFK-30 4S	1/2 ODF	9.7	9.7	9.5	12.5								
BFK-30 5	5/8 SAE	10.3	10.3	10.1	13.3								
BFK-30 5S	5/8 ODF	14.2	14.2	13.9	18.3								
BFK-30 6S	3/4 ODF	16.0	16.0	15.7	20.6								
BFK-30 7S	7/8 ODF	16.7	16.7	16.4	21.5								
BFK-30 9S	1 1/8 ODF	18.0	18.0	17.5	23.2								

<sup>1</sup> All ratings in accordance with ARI Standard 710-04. 86°F liquid refrigerant temperature  
5°F saturated vapor temperature  
3.1 lbs./min./ton for R-134a  
2.9 lbs./min./ton for R-22 and R-407C  
4.0 lbs./min./ton for R-404A/507 and R-12  
2.7 lbs./min./ton for R-410A

<sup>2</sup> Water Capacities are based on:  
Equilibrium Point Dryness (EPD) of:  
50 parts per million for R-134a, R404-A/507,  
R-410A, R-407C, and R-744  
60 parts per million for R-22  
15 parts per million for R-12

<sup>3</sup> 20 drops of water = 1 gram = 1 cc

<sup>4</sup> For 2 PSI  $\Delta P$ , Multiply values by 1.4

<sup>5</sup> Since there is currently no ARI standard for R-744, values are based on 1 ton of refrigeration at 20°F liquid refrigerant temperature and -20°F saturated vapor temperature.

## Liquid Refrigerant Holding Capacity-Ounces

Unit Size	R-22		R-407C		R-410A		R-744	
	75°F	125°F	75°F	125°F	75°F	125°F	20°F	-20°F
05	4.6	4.2	4.4	3.9	4.1	3.5	3.7	4.1
08	7.7	6.9	7.3	6.4	6.9	5.8	6.2	6.9
16	14.2	12.7	13.5	11.8	12.6	10.6	11.4	12.7
30	21.0	18.7	20.0	17.4	19.6	16.5	16.8	18.7