



## SLIMDUCT® LINESET COVERS

Attractive lineset ducting system for the professional installer.

# SLIMDUCT®

Heavy weight professional grade • Gloss finish

- 3 sizes. 3<sup>3</sup>/<sub>4</sub>", 4<sup>1</sup>/<sub>2</sub>" and 5<sup>1</sup>/<sub>2</sub>"
- 3 colors. Choose white, ivory, or brown
- 15 fittings. Assures complete flexibility of installation
- 78" lengths. 5 lengths per box
- 10 fittings per box.
- 1 year warranty.



Condensate Management

Compressor Maintenance

Air Diffusers

Linesets & Lineset Covers

Locking Refrigerant Caps

Equipment Mounting

Specialty Chemicals

Air Conditioning Chemicals

Heating Chemicals

Other Related Products

# SLIMDUCT® LINESET COVER ORDERING INFORMATION

Condensate Management

Compressor Maintenance

Air Diffusers

Linesets & Covers

Looking Refrigerant Caps

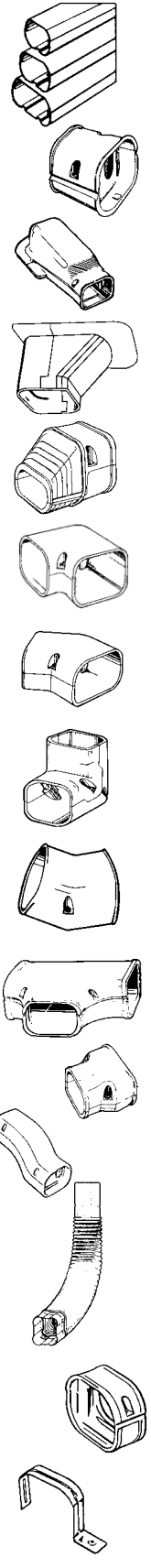
Equipment Mounting

Specialty Chemicals

Air Conditioning Chemicals

Heating Chemicals

Other Related Products



RS# (ref. #) White	RS# (ref. #) Ivory	RS# (ref. #) Brown	Description	L	W	H
85004 (SD-77-W)	85024 (SD-77-I)	85064 (SD-77-B)	SD Slimduct 78" length 77	78"	2 <sup>7</sup> / <sub>8</sub> "	2 <sup>3</sup> / <sub>8</sub> "
85104 (SD-100-W)	85124 (SD-100-I)	85164 (SD-100-B)	SD Slimduct 78" length 100	78"	4"	2 <sup>3</sup> / <sub>4</sub> "
85204 (SD-140-W)	85224 (SD-140-I)	85264 (SD-140-B)	SD Slimduct 78" length 140	78"	5 <sup>3</sup> / <sub>8</sub> "	3 <sup>1</sup> / <sub>4</sub> "
86010 (SJ-77-W)	86030 (SJ-77-I)	85370 (SJ-77-B)	SJ coupler 77	2"	3 <sup>3</sup> / <sub>8</sub> "	2 <sup>5</sup> / <sub>8</sub> "
86110 (SJ-100-W)	86130 (SJ-100-I)	85470 (SJ-100-B)	SJ coupler 100	2 <sup>1</sup> / <sub>2</sub> "	4 <sup>1</sup> / <sub>4</sub> "	3"
86210 (SJ-140-W)	86230 (SJ-140-I)	85570 (SJ-140-B)	SJ coupler 140	3 <sup>1</sup> / <sub>2</sub> "	5 <sup>3</sup> / <sub>4</sub> "	3 <sup>3</sup> / <sub>8</sub> "
86016 (SW-77-W)	86036 (SW-77-I)	85376 (SW-77-B)	SW wall inlet 77	8"	4 <sup>3</sup> / <sub>8</sub> "	3"
86116 (SW-100-W)	86136 (SW-100-I)	85476 (SW-100-B)	SW wall inlet 100	8 <sup>3</sup> / <sub>4</sub> "	5"	3 <sup>3</sup> / <sub>8</sub> "
85216 (SW-140-W)	85236 (SW-140-I)	85576 (SW-140-B)	SW wall inlet 140	11"	6 <sup>1</sup> / <sub>2</sub> "	3 <sup>7</sup> / <sub>8</sub> "
85014 (SP-77-W)	85034 (SP-77-I)	85374 (SP-77-B)	SP soffit inlet 77	5 <sup>1</sup> / <sub>8</sub> "	4 <sup>3</sup> / <sub>8</sub> "	5 <sup>1</sup> / <sub>8</sub> "
86114 (SP-100-W)	86134 (SP-100-I)	85474 (SP-100-B)	SP soffit inlet 100	5 <sup>3</sup> / <sub>8</sub> "	5 <sup>3</sup> / <sub>8</sub> "	5 <sup>3</sup> / <sub>8</sub> "
85214 (SP-140-W)	85234 (SP-140-I)	85574 (SP-140-B)	SP soffit inlet 140	5 <sup>3</sup> / <sub>4</sub> "	6 <sup>7</sup> / <sub>8</sub> "	5 <sup>3</sup> / <sub>4</sub> "
86007 (SE/SEN-77-W)	86027 (SE/SEN-77-I)	85367 (SE/SEN-77-B)	SEN end fitting 77	1 <sup>3</sup> / <sub>4</sub> "	3 <sup>1</sup> / <sub>4</sub> "	2 <sup>5</sup> / <sub>8</sub> "
86107 (SEN-100-W)	86127 (SEN-100-I)	85467 (SEN-100-B)	SEN end fitting 100	4 <sup>1</sup> / <sub>2</sub> "	4 <sup>1</sup> / <sub>4</sub> "	3"
86207 (SEN-140-W)	86227 (SEN-140-I)	85567 (SEN-140-B)	SEN end fitting 140	6"	5 <sup>3</sup> / <sub>4</sub> "	3 <sup>3</sup> / <sub>8</sub> "
86011 (SK-77-W)	86031 (SK-77-I)	85371 (SK-77-B)	SK 90° flat ELL 77	5"	2 <sup>5</sup> / <sub>8</sub> "	5"
86111 (SK-100-W)	86131 (SK-100-I)	85471 (SK-100-B)	SK 90° flat ELL 100	6"	3"	6"
85211 (SK-140-W)	85231 (SK-140-I)	85571 (SK-140-B)	SK 90° flat ELL 140	7 <sup>1</sup> / <sub>2</sub> "	3 <sup>3</sup> / <sub>8</sub> "	7 <sup>1</sup> / <sub>2</sub> "
85012 (SKF-77-W)	85032 (SKF-77-I)	85372 (SKF-77-B)	SKF 45° flat ELL 77	4 <sup>1</sup> / <sub>2</sub> "	3 <sup>1</sup> / <sub>4</sub> "	2 <sup>5</sup> / <sub>8</sub> "
86112 (SKF-100-W)	86132 (SKF-100-I)	85472 (SKF-100-B)	SKF 45° flat ELL 100	5 <sup>1</sup> / <sub>4</sub> "	4 <sup>1</sup> / <sub>4</sub> "	3"
85212 (SKF-140-W)	85232 (SKF-140-I)	85572 (SKF-140-B)	SKF 45° flat ELL 140	6 <sup>1</sup> / <sub>4</sub> "	5 <sup>3</sup> / <sub>4</sub> "	3 <sup>3</sup> / <sub>8</sub> "
86002 (SC-77-W)	86022 (SC-77-I)	85362 (SC-77-B)	SC 90° vertical ELL 77	4"	3 <sup>1</sup> / <sub>4</sub> "	4"
86102 (SC-100-W)	86122 (SC-100-I)	85462 (SC-100-B)	SC 90° vertical ELL 100	4 <sup>5</sup> / <sub>8</sub> "	4 <sup>1</sup> / <sub>4</sub> "	4 <sup>5</sup> / <sub>8</sub> "
85202 (SC-140-W)	85222 (SC-140-I)	85562 (SC-140-B)	SC 90° vertical ELL 140	5"	5 <sup>3</sup> / <sub>4</sub> "	5"
85000 (SCF-77-W)	85020 (SCF-77-I)	85360 (SCF-77-B)	SCF 45° vertical ELL 77	4 <sup>1</sup> / <sub>8</sub> "	3 <sup>1</sup> / <sub>4</sub> "	2 <sup>5</sup> / <sub>8</sub> "
86100 (SCF-100-W)	86120 (SCF-100-I)	85460 (SCF-100-B)	SCF 45° vertical ELL 100	4 <sup>3</sup> / <sub>8</sub> "	4 <sup>1</sup> / <sub>4</sub> "	3"
85200 (SCF-140-W)	85220 (SCF-140-I)	85560 (SCF-140-B)	SCF 45° vertical ELL 140	4 <sup>5</sup> / <sub>8</sub> "	5 <sup>3</sup> / <sub>4</sub> "	3 <sup>3</sup> / <sub>8</sub> "
86015 (ST-77-W)	86035 (ST-77-I)	85375 (ST-77-B)	ST TEE 77	6 <sup>1</sup> / <sub>2</sub> "	4 <sup>7</sup> / <sub>8</sub> "	2 <sup>5</sup> / <sub>8</sub> "
86115 (ST-100-W)	86135 (ST-100-I)	85475 (ST-100-B)	ST TEE 100	7 <sup>1</sup> / <sub>8</sub> "	6"	3"
85215 (ST-140-W)	85235 (ST-140-I)	85575 (ST-140-B)	ST TEE 140	9 <sup>7</sup> / <sub>8</sub> "	7 <sup>7</sup> / <sub>8</sub> "	3"
85106 (SDR-100-77-W)	85126 (SDR-100-77-I)	85466 (SDR-100-77-B)	SDR reducer 100-77	2 <sup>1</sup> / <sub>2</sub> "	4 <sup>1</sup> / <sub>4</sub> "	3"
86206 (SDR-140-100-W)	86226 (SDR-140-100-I)	85566 (SDR-140-100-B)	SDR reducer 140-100	4"	5 <sup>3</sup> / <sub>4</sub> "	3 <sup>3</sup> / <sub>8</sub> "
86018 (SIF-77-W)	86038 (SIF-77-I)	85378 (SIF-77-B)	SIF 2" fixed offset 77	7 <sup>1</sup> / <sub>8</sub> "	3 <sup>1</sup> / <sub>4</sub> "	3 <sup>1</sup> / <sub>4</sub> "
86118 (SIF-100-W)	86138 (SIF-100-I)	85478 (SIF-100-B)	SIF 2" fixed offset 100	7 <sup>1</sup> / <sub>8</sub> "	4 <sup>1</sup> / <sub>4</sub> "	4 <sup>1</sup> / <sub>4</sub> "
85008 (SF-77-500-W)	85028 (SF-77-500-I)	85368 (SF-77-500-B)	SF flexible ELL 20" length 77-500	19 <sup>1</sup> / <sub>2</sub> "	3"	2 <sup>1</sup> / <sub>2</sub> "
86108 (SF-100-800-W)	86128 (SF-100-800-I)	86468 (SF-100-800-B)	SF flexible ELL 31" length 100-800	31 <sup>1</sup> / <sub>2</sub> "	4"	2 <sup>3</sup> / <sub>4</sub> "
85208 (SF-140-800-W)	85228 (SF-140-800-I)	85568 (SF-140-800-B)	SF flexible ELL 31" length 140-800	31 <sup>1</sup> / <sub>2</sub> "	5 <sup>3</sup> / <sub>4</sub> "	3 <sup>3</sup> / <sub>8</sub> "
-	85188 (SF-77-1000-I)	-	SF flexible ELL 39" length ivory 77-1000	2 <sup>9</sup> / <sub>4</sub> "	3"	2 <sup>1</sup> / <sub>2</sub> "
85009 (SFJ-77-W)	85029 (SFJ-77-I)	85369 (SFJ-77-B)	SFJ flexible adaptor 77	1 <sup>3</sup> / <sub>8</sub> "	3 <sup>1</sup> / <sub>4</sub> "	3 <sup>1</sup> / <sub>4</sub> "
85109 (SFJ-100-W)	85129 (SFJ-100-I)	85469 (SFJ-100-B)	SFJ flexible adaptor 100	1 <sup>1</sup> / <sub>2</sub> "	4 <sup>1</sup> / <sub>4</sub> "	4 <sup>1</sup> / <sub>4</sub> "
86105 (SWC-100-W)	-	-	SD 3.75" Slim wall flange 100	5 <sup>5</sup> / <sub>8</sub> "	1 <sup>5</sup> / <sub>8</sub> "	6 <sup>7</sup> / <sub>8</sub> "
85205 (SWC-140-W)	-	-	SD 5.5" Slim wall flange 140	7 <sup>1</sup> / <sub>8</sub> "	1 <sup>5</sup> / <sub>8</sub> "	8 <sup>2</sup> / <sub>3</sub> "
86005 (SWC-77-W)	86025 (SWC-77-I)	-	SD 2.75" Slim wall flange 77	4 <sup>1</sup> / <sub>2</sub> "	1 <sup>5</sup> / <sub>8</sub> "	5"
85080 (SN-77-W)	85085 (SN-77-I)	85395 (SN-77-B)	SD 2.75" Twist ELL 77	5 <sup>1</sup> / <sub>2</sub> "	5 <sup>1</sup> / <sub>2</sub> "	3 <sup>9</sup> / <sub>16</sub> "
86001 (SFS-77)	-	-	SFS saddle for flexible ELL* 77	1 <sup>3</sup> / <sub>8</sub> "	3 <sup>1</sup> / <sub>4</sub> "	2 <sup>1</sup> / <sub>2</sub> "
86101 (SFS-100)	-	-	SFS saddle for flexible ELL* 100	1 <sup>1</sup> / <sub>2</sub> "	3 <sup>1</sup> / <sub>4</sub> "	3"
86201 (SFS-140)	-	-	SFS saddle for flexible ELL* 140	1 <sup>1</sup> / <sub>2</sub> "	4 <sup>1</sup> / <sub>4</sub> "	3"
86299 (SL-300)	-	-	SL strap kit for line sets	-	-	-

\* (stainless steel)

# SLIMDUCT® LINESET COVERS

Continued

## SlimDuct® Quick Installations

**Application.** Slimduct® is perfect for mini-splits, high velocity and conventional ducted split air conditioning systems.

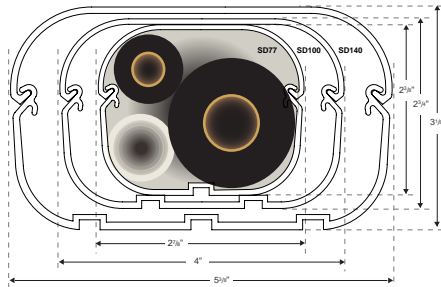
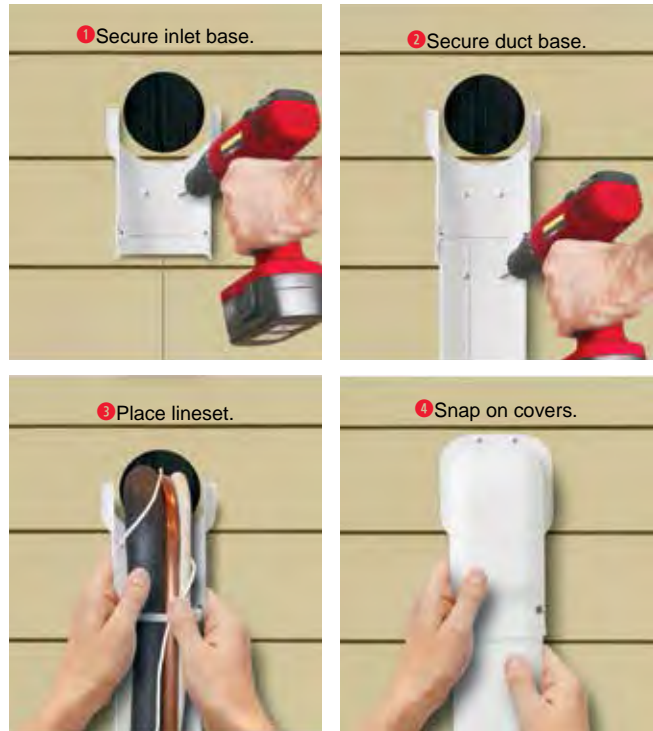
**Strong.** Slimduct® ducting is extruded with our special formula rigid polyvinyl chloride. Slimduct is UV, weather & fire resistant, with a temperature range from -4°F to 140°F. The result is a long lasting quality product that will remain attractive and provide protection for many years.

**Protective.** Slimduct® protects lineset, wiring and drain hose from weather, vandalism, pet and pest damage.

**Easy to install.** Slimduct® installs quickly, and can be easily accessed for repairs or replacement of the lineset.

**Stylish.** Slimduct® offers three duct sizes. Each size is available in three neutral colors - white, ivory, and brown. Slimduct colors are designed to compliment any natural stone, brick, wood, stucco, vinyl or painted facade, and can be used for both residential or commercial installations.

## Functional & Professional Appearance



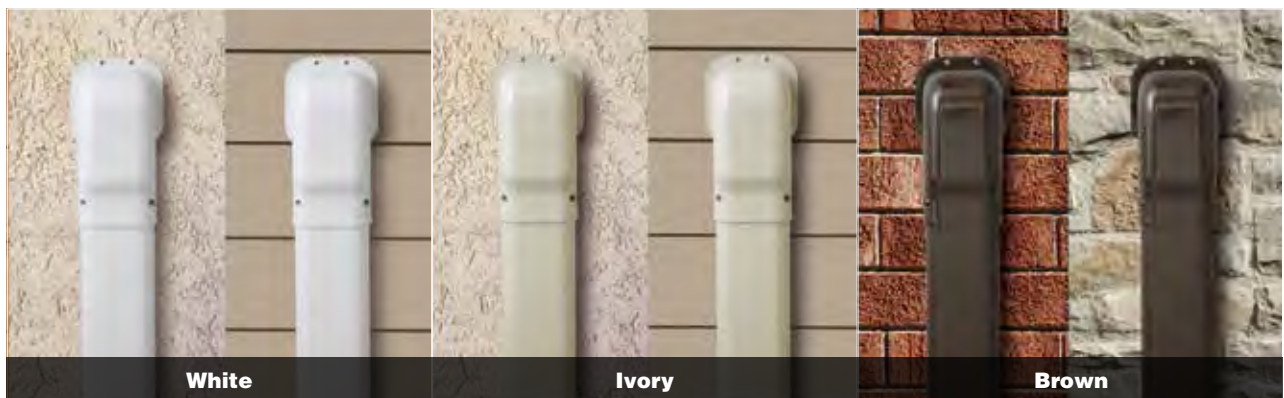
### Technical Information

**Weather Resistance**  
Weather resistant PVC, UV stabilized & fire resistant. Tested to over 2,000 hours.

**Temperature Range**  
-4°F to 140°F

## SlimDuct® Options

3 Colors for Residential & Commercial Applications



**Size Specifications** - Choose duct size SD77, SD100 or SD140.

NOTE: Dark colors fade in sunlight sooner than lighter colors

SLIMDUCT is a registered trademark of Inaba Denki Sangyo Co.