



Serving the HVAC-R Industry Since 1931

# REMANUFACTURED PRODUCTS CATALOG

Our unique Remanufactured Parts Catalog contains many products that will help you save time and money.

Available only through Sid Harvey's, these parts will help you:

- Lower Parts Inventory Costs
- Reduce Service Calls
- Save Time on Jobs
- Clear Higher Profits



World's Largest  
Remanufacturer of  
Heating &  
Air Conditioning  
Parts



RESIDENTIAL • COMMERCIAL • INDUSTRIAL



## **World's largest remanufacturer of heating and air conditioning parts.**

Our unique Remanufactured Parts Catalog contains hundreds of parts that will help you save time and money. Available only through Sid Harvey's, these remanufactured parts will help you to:

- lower parts inventory costs
- save time on jobs
- reduce service calls
- clear higher profits

All Sid Harvey's parts, whether they are popular everyday items, hard to find exact replacements, or one-of-a-kind special orders, go through our exclusive remanufacturing process. Since 1933, our manufacturing facility has concentrated solely on remanufacturing heating and air conditioning parts. Thousands of visitors have witnessed our superior quality control, and are visibly impressed with the many detailed processes involved in completely remanufacturing the parts that are vital to their livelihood.

Sid Harvey's remanufacturing is in a class far beyond the repair shop or rebuilder, who fixes only what is broken. Reusable components and cores are first sent to our cleaning department, which uses sophisticated methods (ultrasonic, sandblasting, chemical bathing, etc.) to perfectly restore them. The thoroughly cleaned parts are then subjected to rigorous component testing, as specified by the original manufacturer. No expense is spared on critical components. They are tested on specially designed equipment, and either reworked or replaced with new. Some are even modified to incorporate improvements made after their original manufacture date. Parts then go to one of the various specialized production departments, each of which has its own tooling and testing equipment that is unmatched in the industry.

The finished products are then subjected to painstaking and rigid controlled final tests and inspection. For all practical purposes, the product that emerges is a "new" unit, that carries a 5 year warranty and in many cases is **better than new!**

Sid Harvey's is one of the few manufacturers/remanufacturers looking at components after they've been in use for more than a year, the customary new part warranty period. For almost 90 years, Sid Harvey's has witnessed how component performance is affected by actual on-the-job conditions such as dirt, sludge, corrosion, chemicals (and occasionally even end user abuse). After this type of examination, our engineers analyze conditions and recommend improvements designed to either withstand or prevent a particular problem from reoccurring. This becomes the standard in the remanufacturing process, making the part **better than new.**

*Sid Harvey*

President

*James Ottes*

V.P. of Manufacturing Division.



**REMANUFACTURED IN THE U.S.A.**

**All Sid Harvey Remanufactured Products**

**NOW WITH**

**5 YEAR  
WARRANTY**

**Better Product + Better Price = Better Warranty**



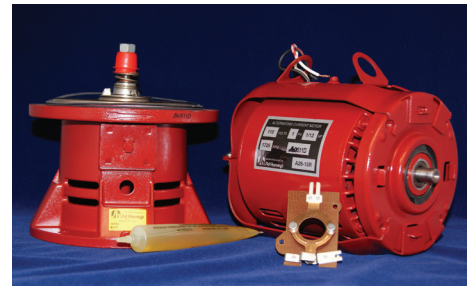
**WORLD'S LARGEST REMANUFACTURER**



The “Better Than New” symbol is your assurance that the products featured is superior to new because of Sid Harvey’s life-testing of product. We use the OEM’s specifications as a bare minimum requirement and then through our Engineering and Base-Line Testing, exceed the OEM’s in our remanufacturing to guarantee a long life on the job which is the result of our 5-year warranty. Some of our products that are “Better Than New” are featured here. We invite you to read about them and discover the difference that remanufacturing can make.

### Bearing Assemblies & Motors:

Sid Harvey’s residential B&G bearing assemblies are remanufactured with extended performance in mind. When originally manufactured, most bearing assemblies are made with a rolled bearing; one that is merely a flat piece of metal rolled into shape. This design leaves gaps, causing the shaft to only become lubricated at the point of contact with the wicking. The end result is premature wear. Our remanufactured bearing assemblies are made with a sintered brass bearing. It’s one piece design is porous and allows for shaft lubrication along the full circumference of the bearing. Our Sid Harvey motors are exclusively wound with copper wire, never aluminum. Stators are dipped in special motor varnish which allows for the copper wire to become rigid in order to eliminate the effects of vibration, not all OEM’s perform this operation. Motor end-bells are machined out and stainless-steel tolerance rings are used for the bearing seat, The OEM’s rely on a non-precision end-bell only.



### Printed Circuit Board Controls:

An exclusive dip-soldering process is used on printed circuit boards, adding more solder to the circuit board traces than the OEM’s, creating better conductivity and eliminating solder joint cracking and lifted traces. This process gives up to four times more solder than the OEM’S which are “wave” soldered which applies only a minimum amount of solder at the point of contact. The relays used on these controls are remanufactured with new blades, springs and pure silver contacts, verses most OEM’s use silver coated. After these relays are assembled they are tested on a computer aided system which test for relay wipe, spring blade tension as well as pull-in voltage.





# QUICK INDEX

## Bearings & Assemblies

- Taco
- Bell & Gossett

Page B1

BEARING ASSEMBLIES

## Circulators

- Taco
- Bell & Gossett
- Armstrong

Page C1-C3

CIRCULATORS

## Electrical

- Honeywell Aquastat
- Beckett Primary Controls
- Combination Controls
- Primary Controls
- Switches /Relays
- Timers
- Stack Relays
- Triple Aquastats

Page E1-E5

ELECTRICAL

## Hydronics

- Dual Relief Valves
- M&M Feeders
- Hydronic Controls
- Zone Valves
- Steam Controls
- Replacement Heads & Valves

Page H1-H4

HYDRONICS

## Motors

- Burner
- Blower
- Circulator
- Centrifugal
- Specialty

Page M1-M4

MOTORS

## Oil Delivery Nozzles

- Scully Oil Delivery Nozzles

Page O1

OIL DELIVERY NOZZLES

## Pumps

- "A" Pumps
- "B" Pumps
- "J" Pumps
- "H" Pumps
- Sid Harvey Exclusive
- Solenoid Pumps
- Specialty Pumps

Page P1-P4

PUMPS

## Recovery Machines

- Appion
- CPS
- Inficon
- ProMax
- Ritchie

Page R1

RECOVERY MACHINES

## Vacuum Pumps

- J/B
- Ritchie
- CPS
- RobinAir
- Appion
- MasterCool

Page V1

VACUUM PUMPS

# CROSS REFERENCE INDEX

OEM #	REMAN #	PG #	OEM #	REMAN #	PG #	OEM #	REMAN #	PG #
47	B110R	H1	186864	B76-1R	C1	15500		
5062	543-10R	O1	189034	B75-1R	C1	(VacuMaster)	VP16R	V1
5064	543-40R	O1	189034	B75R	C1	15600 CoolTech	VP22R	V1
5100	543-11R	O1	189100	B70-3R	C1	1600-155	B89R	C3
5106	543-41R	O1	189100	B70R	C1	1600-160RP	B67-60R	C3
13500	B111-1R	H1	189103	B70-2R	C1	1600-160RP	C317-13R	E5
15400	VP14R	V1	189104	B71R	C1	1600-175	B89-1R	C3
95760	RM08R	R1	189105	B73R	C1	1604-023	B89-2R	C3
102210	B52R	B1	189120	B75-2R	C1	1604-025	B89-3R	C3
102214	B51-4R	B1	189120	B75-4R	C1	189163LF	B70-1R	C1
106189	B51R	B1	189122	B75-3R	C1	21444U	A39-33R	M1
110223	A28-64R	M3	386450	B144-5R	H4	21805U	A39-321R	M1
111031	A28-120R	M2	386500	B144-7R	H4	316P955	A39-62R	M1
111034	A28-15R	M2	555112	P9-22R	P4	329-T3	B143-13R	H4
111040	A28-123R	M2	1011350	A215-100R	M4	334-T3	B143-12R	H4
111042	A28-125R	M2	7001010	P4-150R	P4	40003916-048	B163-7R	H3
111044	A28-27R	M2	7001029	R78-10R	E3	5410A	RM05R	R1
111046	A28-28R	M2	007-F5	B53-16R	C3	5410EX	RM06R	R1
111049	A28-32R	M2	106192LF	B51-1R	B1	620-5	A180-1R	M1
111061	A28-24R	M2	110-115/1LE	B50R	B1	668-401	R79-6R	E3
118447	B73-1R	C1	110-185RP	A28-60R	M3	67-G	B103-1R	H1
118447	B73-2R	C1	110-361RP	B83R	C2	7505A0000	R75-50R	E3
118726	B72R	C1	11092LE	B138-12R	H4	7505B1500	R75-51R	E3
118844	B74-1R	C1	111-058rp	B85-1R	C2	7505P1515	R75-52R	E3
132800	B110-1R	H1	12-074RP	A28-70R	M3	8041-00	C255-110R	E4
143100	B109-6R	H1	121-151RP	A28-66R	M3	8045-00	C255-118R	E4
149400	B103R	H1	131-119	A28-75R	M3	8045-20	C255-120R	E4
169227	A28-29R	M2	131-143RP	A28-69R	M3	8141-00	C255-130R	E4
169230	A28-30R	M2	1311-102	B163-106R	H2	8141-20	C255-132R	E4
169233	A28-36R	M2	1311-103	B163-107R	H2	8145-00	C255-138R	E4
169400	B112-10R	H1	132-096	A28-72R	M3	8145-20	C255-140R	E4
169500	B112-8R	H1	1361-102	B163-100R	H2	90066-2V-110	VP23R	V1
185260	B76-25R	C2	1361-103	B163-101R	H2	90066-R	VP17R	V1
185260	B76-26R	C2	150S	B109R	H1	A166	A166R	M4
186863	B76-2R	C1	15120A	VP28R	V1	A1RA-7738	P1-7R	P1
186863	B76R	C1	15150			A1VA7022	P4-87R	P1
			(VacuMaster)	VP04R	V1	A1VA7912	P4-100R	P1



REMANUFACTURED IN THE U.S.A.

# CROSS REFERENCE INDEX

OEM #	REMAN #	PG #	OEM #	REMAN #	PG #	OEM #	REMAN #	PG #
A1YA7112	P4-83R	P1	H3BB-100R	P4-14R	P2	L4081B1096	C322-4R	E1
A1YC7114	P4-85R	P1	H3BB-200R	P4-10R	P2	L6006A1145	C293-3R	E1
A2EA-6527	P4-198R	P4	H3BC-100	P4-16R	P2	L604A	C355-4R	H4
A2VA-3006	P4-196R	P4	H3BC-200	P4-12R	P2	L6081A1010	C332-6R	E1
A2VA7116	P4-91R	P1	H3BD-100	P4-17R	P2	L7224U1002	C317-14R	E5
A2VA7916	P4-101R	P1	H3BD-200	P4-13R	P2	L8124A	C317R	E5
B1YA-8212	P4-60R	P1	H3CC-408	P67-31R	P2	L8124A1015	C317-2R	E5
B2TA-8851N	P1-6R	P4	H6BB-E100	P90-40R	P2	L8124C1003	C317-5R	E5
B2VA-8216	P4-70R	P1	HA2BB-100	P2-32R	P2	L8124E1016	C317-7R	E5
B2YA-8916	P4-30R	P1	HC, 100			L8124G1020	C317-8R	E5
CR700	RM03R	R1	bronze	B83-1R	C2	L8124L1011	C317-11R	E5
D34CPA2PH9	A24-60R	M4	HC20, 120-6			L8148A1017	C312-8R	E1
DV-142N (Platinum)	VP15R	V1	thru 120-12, 3/8" shaft	B86R	C2	L8148E	C312-10R	H2
DV-200N (Platinum)	VP24R	V1	HDH, 111-1 thru 111-3	B85R	C2	L8148J1009	C312-9R	E1
DV-3E (Eliminator)	VP09R	V1	J2BB300	P42-12R	P2	M10534	A28-126R	M2
DV-42N (Platinum)	VP03R	V1	J3BA-100	P1-1R	P2	M34DK-3	P6-31R	P1
DV-4E (Eliminator)	VP12R	V1	J3BA-200	P2-1R	P2	MiniMax	RM10R	R1
DV-6E (Eliminator)	VP20R	V1	J3BB-100	P1R	P2	MTR12115BD	A22-42R	M4
DV-85C (FastVac)	VP10R	V1	J3BB-200	P2R	P2	MTR13115BD	A22-28R	M4
EC-50TK	EC-50R	P4	J3BC-100	P1-2R	P2	MTR14115BD	A22-14R	M4
EL2005	A39-29R	M1	J3BC-200	P2-2R	P2	MTROB2	A39-31R	M1
F19-0097	B163-112R	H3	J3BC-200	P2-2R	P2	MTROB3	A39-4R	M1
F19-0104	B163-113R	H3	J3BD-100	P1-3R	P2	MTROB4	A39-44R	M1
F84-0434	B163-114R	H3	J3BD-200	P2-3R	P2	MTROB5	A39-2R	M1
Fast Vac	VP11R	V1	J3CC300	P42-18R	P2	N/A	B78R	C1
G1	RM01R	R1	J3CC406	P42-15R	P2	N/A	B76-30R	C2
G5	RM02R	R1	J3NBN-A132B	P1-5R	P2	N/A	B76-32R	C2
GE4788	A39-50R	M1	JA2BB300	P42-19R	P2	N/A	B79R	C2
H3BA-100	P4-15R	P2	L147A	C311R	H2	N/A	A39-34R	M1
H3BA-200	P4-11R	P2	L4006A2007	C290R	E1	N/A	A28-52R	M3
			L4006B1155	C290-1R	E1	N/A	A28-62R	M3
			L4064B2210	C434-9R	E2	N/A	S14-1R	M4
			L4064B2228	C434-7R	E2	N/A	P4-199R	P4
			L4064B2236	C434-12R	E2	PA404A1033	C354R	H4
			L4079B1033	C359-33R	H4	PA404B1023	C354-1R	H4
						R4795A1016	R210-10R	E3



# CROSS REFERENCE INDEX

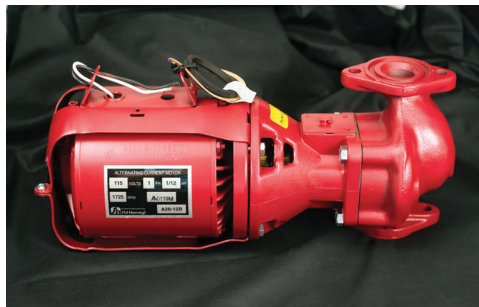
OEM #	REMAN #	PG #	OEM #	REMAN #	PG #
R7795A1001	R210-22R	E3	VP6S Pro-Set	VP19R	V1
R8182D1079	R80-30R	E2	X-Tract-R	RM09R	R1
R8182D1111	R80-32R	E2	Yellow Jacket		
R8182E	R80-52R	E2	(SuperEvac)	VP13R	V1
R8182H1070	R80-40R	E2	Yellow Jacket		
R8182J	R80-58R	E2	(SuperEvac)	VP21R	V1
R8184G4009	R75-40R	E3	Yellow Jacket		
R8184G4066	R75-41R	E3	(SuperEvac)	VP27R	V1
R8184G4074	R75-42R	E3	Yellow Jacket		
R8184M1051	R75-58R	E3	(SuperEvac)	VP29R	V1
RA117A	R22R	E4	Yellow		
RA166A	R20R	E4	Jacket Bullet	VP25R	V1
RA817A	R5R	E4			
RA832A1066	R520-26R	E1			
RA845A1030	R520-32R	E1			
RA89A1074	R510-15R	E1			
RecoverX	RM11R	R1			
RG5410HP	RM07R	R1			
SR501	R520-52R	E1			
Tez8	VP26R	V1			
V8043E-A	B163-11R	H3			
V8043E-B	B163-14R	H3			
V8043E1004	B163R	H2			
V8043E1012	B163-1R	H2			
V8043E1020	B163-2R	H2			
V8043F-A	B163-10R	H3			
V8043F-B	B163-12R	H3			
V8043F1036	B163-5R	H2			
Vortex	RM04R	R1			
VP12D Pro-Set	VP30R	V1			
VP2D Pro-Set	VP05R	V1			
VP2S Pro-Set	VP06R	V1			
VP3D Pro-Set	VP07R	V1			
VP3S Pro-Set	VP08R	V1			
VP6D Pro-Set	VP18R	V1			





# BEARING ASSEMBLIES

## COMPLETE BEARING ASSEMBLIES



B51R

OEM	Description	Reman Part Number	OEM Part Number	HP	RPM	Motor Part No.	Voltage	Circulator Part No.	Flange Size
Taco	Taco Series 110 Complete In-Line Circulator	B50R	110-115/1LE	1/12 HP	1725	A28-64R	115	B83R	3/4"
Bell & Gossett	B&G Series 100 With Bronze Volute	B51-1R	106192LF	1/12 HP	1725	A28-15R	115	B75R	3/4"
Bell & Gossett	Bell and Gossett Bronze 1-1/4, 1-1/2 NPT HV BNFI	B51-4R	102214	1/6 HP	1725	A28-24R	115	B75-4R	2"
Bell & Gossett	Bell and Gossett Series 100 Complete In-Line Circulator	B51R	106189	1/12 HP	1725	A28-15R	115	B74-1R	3/4"
Bell & Gossett	Bell and Gossett Booster Pump Complete In-Line Circulator 1" NPT HV NFI	B52R	102210	1/6 HP	1725	A28-24R	115	B75-4R	1"

**All Sid Harvey Remanufactured Products**

**NOW WITH 5 YEAR WARRANTY**

**Better Product + Better Price = Better Warranty**



# CIRCULATORS

## RESIDENTIAL B&G CIRCULATORS

All circulators listed below: • without volute • flange bearing • available with glycol, high temp. and standard seal



B70-1R



B70R



B71R



B73R



B74-1R



B75-2R



B75-4R



B75R



B76-1R



B76R



B78R

OEM	Description	Reman Part Number	OEM Part Number	Bearing	Base Width	Flange Width	Impeller	Seal Kit
Bell & Gossett	189163LF	B70-1R	189163LF	Flange	6 - 1/4"	4 - 1/8"	WITHOUT	STANDARD
Bell & Gossett	B70R Bronze Fitted and Shroud (Potable Water)	B70-2R	189103	Flange	6 - 1/4"	4 - 1/8"	WITHOUT	STANDARD
Bell & Gossett	B70R with Hi-Temperature Seal	B70-3R	189100	Flange	6 - 1/4"	4 - 1/8"	WITHOUT	HIGH TEMP.
Bell & Gossett	HD Booster Pump	B70R	189100	Flange	6 - 1/4"	4 - 1/8"	WITHOUT	STANDARD
Bell & Gossett	B70R Bronze Fitted (Potable Water)	B71R	189104	Flange	6 - 1/4"	4 - 1/8"	WITHOUT	STANDARD
Bell & Gossett	Bell and Gossett 118726	B72R	118726	Flange	6 - 1/8"	5 - 3/8"	WITHOUT	STANDARD
Bell & Gossett	B73R Bronze Fitted (Potable Water)	B73-1R	118447	Flange	6 - 1/4"	5"	WITHOUT	STANDARD
Bell & Gossett	B73R With Hi-Temperature Seal	B73-2R	118447	Flange	6 - 1/4"	5"	WITHOUT	HIGH TEMP.
Bell & Gossett	HD Booster Pump	B73R	189105	Flange	6 - 1/4"	5"	WITHOUT	STANDARD
Bell & Gossett	Series 100 Circulator	B74-1R	118844	Flange	5 - 1/4"	3 - 3/8"	INCLUDED	STANDARD
Bell & Gossett	B75R With Hi-Temperature Seal	B75-1R	189034	Flange	5 - 1/4"	3 - 3/8"	WITHOUT	HIGH TEMP.
Bell & Gossett	HV Circulator Less Impeller	B75-2R	189120	Flange	5 - 1/4"	4 - 1/8"	WITHOUT	STANDARD
Bell & Gossett	HV Circulator Less Impeller Bronze Fitted	B75-3R	189122	Flange	5 - 1/4"	4 - 1/8"	WITHOUT	STANDARD
Bell & Gossett	HV Circulator With Impeller	B75-4R	189120	Flange	5 - 1/4"	4 - 1/8"	INCLUDED	STANDARD
Bell & Gossett	B74-1R Bronze Fitted Less Impeller	B75R	189034	Flange	5 - 1/4"	3 - 3/8"	WITHOUT	STANDARD
Bell & Gossett	B76R Bronze Fitted	B76-1R	186864	Flange	7"	3 - 3/4"	WITHOUT	STANDARD
Bell & Gossett	B76R With Hi-Temperature Seal	B76-2R	186863	Flange	7"	3 - 3/4"	WITHOUT	HIGH TEMP.
Bell & Gossett	Series 60 Circulator	B76R	186863	Flange	7"	3 - 3/4"	WITHOUT	STANDARD
Armstrong	Armstrong Version of Series 60 Circulator	B78R	N/A	Flange	7"	3 - 3/4"	WITHOUT	STANDARD



# CIRCULATORS

## COMMERCIAL B&G CIRCULATORS

All circulators listed below: • without volute • without impeller • available with glycol, high temp. and standard seal



B76-25R



B76-30R

OEM	Description	Reman Part Number	OEM Part Number	Bearing	Base Width	Flange Width	Seal Kit
B&G	185260LF Series 60 Circulator Large	B76-25R	185260	Flange	6 - 5/8"	9 - 5/8"	STANDARD
B&G	185260LF Series 60 Circulator Large With Hi-Temperature Seal	B76-26R	185260	Flange	6 - 5/8"	9 - 5/8"	HIGH TEMP.
B&G	Series 1510 Circulator (Small) Less Seal Plate; Ball Bearing	B76-30R	N/A	Ball Bearing	Bracket Mount	Less Seal Plate	STANDARD
B&G	Series 1510 Circulator (Small) Less Seal Plate; Flange Bearing	B76-32R	N/A	Flange	Bracket Mount	Less Seal Plate	STANDARD

## RESIDENTIAL TACO CIRCULATORS

All circulators listed below are available with glycol, high temperature and standard seal.



B83-1R



B83R



B85R

OEM	Description	Reman Part Number	OEM Part Number	Impeller Diameter	Base Width	Flange Width
Flair	Econo Flair Bearing Assembly	B79R	N/A	2 - 1/2"	3/4"	3 - 3/4"
Taco	Series 110 Circulator For Potable Water	B83-1R	HC, 100 bronze	2 - 1/2"	3/4"	3 - 3/4"
Taco	Series 110 Circulator	B83R	110-361RP	2 - 1/2"	4 - 3/4"	3 - 5/8"
Taco	Taco HDH Circulator 111-4 - 111-8	B85-1R	111-058rp	2 - 1/2"	4 - 3/4"	4 - 5/8"
Taco	Taco HDH Circulator 111-1 - 111-3	B85R	HDH, 111-1 thru 111-3	3 - 1/2"	4 - 3/4"	4 - 5/8"
Taco	HC20, 120-6 thru 120-12, 3/8" shaft	B86R	HC20, 120-6 thru 120-12, 3/8" shaft	3 - 3/4"	4 - 3/4"	4 - 5/8"

# CIRCULATORS

## 007 TACO CIRCULATOR



B53-16R

OEM	Description	Reman Part Number	OEM Part Number	HP	AMPS	FLOW RATE	VOLTAGE	RPM	HEAD
Taco	Taco 007	B53-16R	007-F5	1/25	0.7	0-20 GPM	115	3250	0-11 FT

## COMMERCIAL TACO CIRCULATORS



B67-60R



B89-3R



B89R

OEM	Description	Reman Part Number	OEM Part Number	Base Width	Flange Width
Taco	Series 1600 Replacement Cartridge - Includes Volute Gasket For All 4 Models	B67-60R	1600-160RP	Compatible with All Series 1600 Circulators	
Taco	Taco Series 1600 Complete Circulator 1600-175	B89-1R	1600-175	5 - 1/8"	8 - 1/2"
Taco	Taco Series 1600 Complete Circulator 1600-023	B89-2R	1604-023	6 - 1/8"	8 - 1/2"
Taco	Taco Series 1600 Complete Circulator 1600-025	B89-3R	1604-025	6 - 1/4"	10"
Taco	Taco Series 1600 Complete Circulator 1600-155	B89R	1600-155	4 - 3/4"	6 - 1/2"





# ELECTRICAL

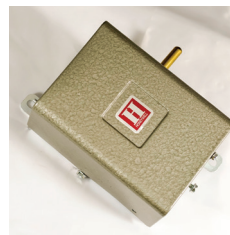
## AQUASTATS



C290R



C312-8R



C317-14R

OEM	Description	Reman Part Number	OEM Part Number	Mount Style	Differential	Switch Action	Voltage	Temperature Range
Honeywell	Hot water control, Circulator,temp range 100-240, 120V/8.0A, 240V/5.1A	C290-1R	L4006B1155	Hor. or Vert.	5 - 30°F	SPST	120 - 240	100 - 240°F
Honeywell	Hot water control, high /low limit,temp range 100-240, 120V/8.0A, 240V/5.1A	C290R	L4006A2007	Hor. or Vert.	5 - 30°F	SPST	120 - 240	100 - 240°F
Honeywell	Circulator, high/low limit,temp range 100-240, 120V/8.0A, 240V/5.1A	C293-3R	L6006A1145	Horizontal	5 - 30°F	SPDT	120 - 240	100 - 240°F
Honeywell	Burner control circuit,line voltage,high limit range 140-240, horizontal mounting	C312-8R	L8148A1017	Horizontal	8°F Fixed	SPST	115	120 - 240°F
Honeywell	Burner control circuit,Milli/Low voltage,high limit range 140-240, vertical mounting	C312-9R	L8148J1009	Vertical	8°F Fixed	SPST	115	140 - 240°F
Honeywell	Multiple aquastat control, switching functions spst,high limit/spst,circulator, no diff.	C322-4R	L4081B1096	Hor. or Vert.	10°F Fixed	SPST	120/240	130 - 240°F
Honeywell	Multiple aquastat control, switching functions spst,high/low limit,spst,circulator, yes diff.	C332-6R	L6081A1010	Hor. or Vert.	On Low Side	SPST	120/240	110 - 220°F

## SWITCHING RELAYS

OEM	Description	Reman Part Number	OEM Part Number	Switch Action	Voltage	Coil Voltage	Relay Coil Current
Honeywell	Switching Relay, line voltage, 120 volt, 60 Hz, 24 Volt Coil.	R510-15R	RA89A1074	SPST	115	24	40 Amp
Honeywell	For switching two line voltage/common power source,voltage (50-60 Hz) 120 volts, switch:spst, 2wire circuit control, coil volts 24, relay coil current 0.40A.	R520-26R	RA832A1066	DPST	115	24	40 Amp
Honeywell	Provides dspt for hot water zone controls /spst for two separate load, 120 volts (50-60Hz),dpst:1 pole line volt/1 low volt,circuit control 2wire, coil volts 24,relay coil current 0.40A	R520-32R	RA845A1030	DPST	115	24	40 Amp
Taco	1 zone switching relay, 115V input, Maximum combined load 7.2 AMPS	R520-52R	SR501	DPDT	115	24	-

# ELECTRICAL

## COMBINATION CONTROLS



R80-30R

OEM	Description	Reman Part Number	OEM Part Number	Mount Style	Differential	Switch Action	Voltage	Temperature Range	Safety
Honeywell	Combo Protectorelay,high/lowlimit circulator control, saftey 45 sec., 10 diff.	R80-30R	R8182D1079	Verticle	10°F	SPST	115	130 - 240°F	45 SEC
Honeywell	Combo Protectorelay,high/lowlimit circulator control, saftey 45 sec., 10 diff.	R80-32R	R8182D1111	Horozontal	10°F	SPST	115	130 - 240°F	45 SEC
Honeywell	Combo Protectorelay,high/lowlimit circulator control, saftey 45 sec., 10 diff.,5'capillary	R80-40R	R8182H1070	Verticle	10°F Fixed	SPST	115	130 - 240°F	45 SEC
Honeywell	Combo Protectorelay,high/lowlimit control,saftey 45 sec., fixed diff.	R80-52R	R8182E	Horozontal	-	-	115	-	45 SEC
Honeywell	Combo Protectorelay,high limit,spst,temp range 180-240, fixed diff.,5'capillary	R80-58R	R8182J	Verticle	15°F	SPST	115	180 - 240°F	45 SEC

## FAN LIMIT SWITCHES



C434-9R

OEM	Description	Reman Part Number	OEM Part Number	Element Length	Fan On	Fan Off	Mount Style
Honeywell	Fan and limit controllers combination of warm air suitable for forced air heating,2switches,one opens limit circuit when temperture exceeds preset safety,resets automatically,the other switch turns the fan onand off,8" insertion	C434-12R	L4064B2236	8"	65 - 215°F	50 - 200°F	Surface
Honeywell	Fan and limit controllers combination of warm air suitable for forced air heating,2switches,one opens limit circuit when temperture exceeds preset safety,resets automatically,the other switch turns the fan onand off, 5"insertion	C434-7R	L4064B2228	5"	65 - 215°F	50 - 200°F	Surface
Honeywell	Fan and limit controllers combination of warm air suitable for forced air heating,2switches,one opens limit circuit when temperture exceeds preset safety,resets automatically,the other switch turns the fan onand off . 11-1/2" insertion	C434-9R	L4064B2210	11.5"	65 - 215°F	50 - 200°F	Surface



# ELECTRICAL

## PRIMARY CONTROLS



R75-40R



R75-58R



R78-10R

OEM	Description	Reman Part Number	OEM Part Number	HZ	Full Load Amp @120 VAC	Ignition	Voltage	Safety
Honeywell	Primary control:Solid state,Electronic,flame safeguard protection for commercial /industrial duel or single fuel burners. Plug in amplifier (1,2,4,5) ,plug-in purge timer(ST71A1000,7sec.; ST71A1042, 10sec.;ST71A1018,30sec.; ST71A1026,60sec.;ST71A1034,90sec. 120Voltage(50-60 Hz)	R210-10R	R4795A1016	60	9.8	Intermittent	115	15 SEC
Honeywell	Primary control:Solid state,Electronic,flame safeguard protection for commercial /industrial duel or single fuel burners. 120voltage(50-60 Hz)pilot func.intermittent.,use with sensor (C7027A,C7035A,C77044A minipeeper) ,plug-in Prepurge timer(ST795A1007 1.5sec,S-T795A1015 7sec,ST795A 1023 10sec,ST795A1031 30sec,ST795A1049 60sec,ST795A1056 90sec.)	R210-22R	R7795A1001	60	ULTRVIOLET	Intermittent	115	FIELD SELECTABLE
Honeywell	Protectorelay:for oil burners,Solid state flame sensing circuit, 45sec safety switch.	R75-40R	R8184G4009	60	7.4	Intermittent	120	45 SEC
Honeywell	Protectorelay:for oil burners,Solid state flame sensing circuit, 15sec safety switch.	R75-41R	R8184G4066	60	10	Intermittent	120	15 SEC
Honeywell	Protectorelay:for oil burners,Solid state flame sensing circuit, 30sec safety switch.	R75-42R	R8184G4074	60	10	Intermittent	120	30 SEC
Honeywell	Protectorelay:solid state flame sensing circuit, 45sec safety.	R75-58R	R8184M1051	60	7.4	Intermittent	115	45 SEC
Riello	Primary Control, 530SE	R78-10R	7001029	60	-	Interrupted	115	6 SEC
White Rodgers	W/R Kwik sensor cad cell relay,replaces intermittent ignition models,45sec safety	R79-6R	668-401	60	10	Intermittent	115	45 SEC

## BECKETT PRIMARY CONTROLS

OEM	Description	Reman Part Number	New Part Number	HZ	Lockout Time	Pre-purge	Post-purge	Voltage
R.W. Beckett	Advanced burner control,primary control pre-valve(0sec), post-motor(0sec).Time out (15sec).	R75-50R	7505A0000	60	15	0	0	120
R.W. Beckett	Advanced burner control,primary control pre-valve(15sec), post-motor(0sec).Time out (15sec).	R75-51R	7505B1500	60	15	15	0	120
R.W. Beckett	Advanced burner control,primary control pre-valve(15sec), post-motor(15sec).Time out (15sec).	R75-52R	7505P1515	60	15	15	15	120



# ELECTRICAL

## DEFROST TIMERS



C255-140R

OEM	Description	Reman Part Number	OEM Part Number	HZ	AMP	Voltage	2-4.	1-3.	3-N
Paragon	For Electric heat defrosting(auxiliary contact), Volt @60Hz/120volts, switching arrangement:closed 2-4/ open1-3/closed 3-N, adj.length of defrost 4-110 min.	C255-110R	8041-00	60	40	120	CLOSED	OPEN	CLOSED
Paragon	For Electric heat defrosting(auxiliary contact), Volt @60Hz/120volts, switching arrangement:closed 2-4/ open1-3/closed none, adj.length of defrost 4-110 min.	C255-118R	8045-00	60	40	115	CLOSED	OPEN	-
Paragon	For Electric heat defrosting(auxiliary contact), Volt @60Hz/120volts, switching arrangement:closed 2-7/ open1-3/closed none, adj.length of defrost 7-110 min.	C255-120R	8045-20	60	40	208/240	CLOSED	OPEN	-
Paragon	Tme initiated,remote temp/pressure terminated,120Vac(60Hz), contacts:N-3closed/1-3open/2-4closed.	C255-130R	8141-00	60	40	120	CLOSED	OPEN	CLOSED
Paragon	Tme initiated,remote temp/pressure terminated,208/240Vac(60Hz), contacts:N-3closed/1-3open/2-4closed.	C255-132R	8141-20	60	40	208/230	CLOSED	OPEN	CLOSED
Paragon	Tme initiated,remote temp/pressure terminated, 120Vac(60Hz), contacts: N-3none/1-3open/2-4closed.	C255-138R	8145-00	60	40	115	CLOSED	OPEN	-
Paragon	Tme initiated,remote temp/pressure terminated, 208/240Vac(60Hz), contacts:N-3 none/1-3open/2-4closed.	C255-140R	8145-20	60	40	208/230	CLOSED	OPEN	-

## STACK RELAYS

OEM	Description	Reman Part Number	OEM Part Number	HZ	WIR	Ignition	Voltage	Safety
Honeywell	Series 10: Constant ignition model three wire,24V thermostat circuit,combines stack and switching relay equipped with flue gas seal.	R20R	RA166A	60	3	Interrupted	115	75 SEC
Honeywell	Series 10:Intermittent ignition model three wire 24V thermostat circuit, combines stack and switching relay equipped with flue gas seal.	R22R	RA117A	60	3	Interrupted	115	75 SEC
Honeywell	Intermittent ignition model two wire, 24V thermostat circuit.	R5R	RA817A	60	2	Intermittent	115	75 SEC



# ELECTRICAL

## TRIPLE AQUASTAT



C317-2R

OEM	Description	Reman Part Number	OEM Part Number	Mount Style	Differential	Switch Action	Voltage	Temperature Range
Honeywell	Includes ZC-ZR terminals,multizone control, large transformer, extra terminals for low voltage zone valves,full load:@ 7.4A@120 vac, 3.7A @240Vac, vertical/horizontal mounting	C317-11R	L8124L1011	Horizontal/ Vertical	Hi Limit 10°F Fixed	SPST	24 - 120	130 - 240°F
Honeywell	Combo Control, hot watercontrol,vertical mount,power transformer 30°capillary	C317-13R	1600-160RP	Vertical	Hi Limit 10°F Fixed		24	130 - 240°F
Honeywell	Hydronic Heating system,Domestic hot water service, Burner control circuit @120(A):7.4 diff;110-220F,full load Amps@240Vac :3.8,full load Amps @120Vac:7.5,/locked rotor Amps @120V:44.4,vertical mounting ,temp range:5/20F locked rotor Amps@240:22.2	C317-14R	L7224U1002	Horizontal/ Vertical	10 - 25°F	-	120	110 - 220°F
Honeywell	Includes multizone control using a separate circulator & R845 relay for each zone,120V,vertical mounting	C317-2R	L8124A1015	Vertical	10 - 25°F	SPST	120	110 - 240°F
Honeywell	Includes multizone control using a separate circulator & R845 relay for each zone,120V, horizontal mounting	C317-5R	L8124C1003	Horizontal	10 - 25°F	SPST	120	110 - 240°F
Honeywell	Includes multizone control using separate circulator & 845 relay for each zone. Large transformer/extra terminal for power to low voltage zone valves. 24V,temp range 120-240, vertical /horizontal mounting.	C317-7R	L8124E1016	Horizontal/ Vertical	Hi Limit 10°F Fixed	SPST	120	130 - 240°F
Honeywell	Includes multizone control using separate circulator& R845 relay for each zone. Large transformer/ extra terminals for power to low voltage zone valves. 120V,temp range 120-240, vertical/horizontal mounting.	C317-8R	L8124G1020	Horizontal/ Vertical	Hi Limit 10°F Fixed	SPST	120	130 - 240°F
Honeywell	High limit control;low limit (operating)control; circulator reverse acting control relay,24V,thermostat circuit;line voltage,temp range low110-200/ high130-240,adjustable diff. vertical mounting	C317R	L8124A	Vertical	10 - 25°F	SPST	120	130 - 240°F



# HYDRONICS

## REPLACEMENT TACO POWER HEAD



B163-80R

OEM	Description	Reman Part Number	OEM Part Number	Voltage	Amp Rating
Taco	Replacement Power head,3 low voltage connection, 24v	B163-80R	555-05RP	24	0.9

## McDONNELL & MILLER FEEDERS



B103-1R



B110-1R



B110R



B112-10R

OEM	Description	Reman Part Number	OEM Part Number	Inlet Size	Series	PSI	Voltage	Outlet Size	Float Bowl
McDonnell & Miller	Low Water Cut Off - For Millivolt	B103-1R	67-G	1/4" NPT	67-G	20	Millivolt	1/4" NPT	N/A
McDonnell & Miller	Low Water Cut Off	B103R	149400	1/4" NPT	67	20	115	1/4" NPT	N/A
McDonnell & Miller	Series 63-M Low Water Cut Off	B109-6R	143100	1" NPT	63M	50	115	1" NPT	YES
McDonnell & Miller	Series 150 Water Cut Off	B109R	150S	1" NPT	150	150	115	1" NPT	YES
McDonnell & Miller	Series 47-2 Mechanical Water Feeder	B110-1R	132800	1/2" NPT	47-2	25	115	1/2" NPT	YES
McDonnell & Miller	Series 47-2 Mechanical Water Feeder Less Switch	B110R	47	1/2" NPT	47	25	-	1/2" NPT	YES
McDonnell & Miller	Series 51-2 Mechanical Water Feeder	B111-1R	13500	3/4" NPT	51-2	35	115	3/4" NPT	YES
McDonnell & Miller	115 Vlt Electric Water Feeder For Oil	B112-10R	169400	1/2" NPT	101A	25	115	1/2" NPT	-
McDonnell & Miller	24 Vlt Electric Water Feeder For Gas	B112-8R	169500	1/2" NPT	101A-24V	25	Millivolt	1/2" NPT	-

# HYDRONICS

## ZONE VALVES



B163-5R

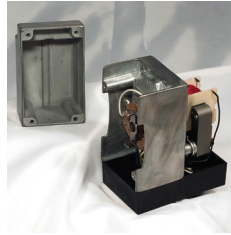
OEM	Description	Reman Part Number	OEM Part Number	Tubing Size	Connection	Maximum System Pressure	Voltage	Electrical Connection
Honeywell	Zone valve:on-off /diverting valves consist of an actuator motor and valve assembly, controlling the flow of hot /cold water.,24Vac	B163R	V8043E1004	1/2"	Sweat	20 PSI	24	18" Leads
Honeywell	18"leads, straight through, normally closed, 3/4"sweat, 24v	B163-1R	V8043E1012	3/4"	Sweat	20 PSI	24	18" Leads
Honeywell	18" leads, straight through, normally closed, 1"sweat, 24v	B163-2R	V8043E1020	1"	Sweat	20 PSI	24	18" Leads
Honeywell	Screw terminals, 2way on-off voltage consist of actuator, valve assembly.	B163-5R	V8043F1036	3/4"	Sweat	20 PSI	24	Terminal
White Rodgers	2 wire valve for zoning hydronics sytem, push-in wiring panel and auxiliary switch 3/4"valve,24v	B163-100R	1361-102	3/4"	Sweat	50 PSI	24	Terminal
White Rodgers	2 wire valve for zoning hydronics system,push-in wiring panel and auxiliary switch 1"valve,24v	B163-101R	1361-103	1"	Sweat	50 PSI	24	Terminal
White Rodgers	3 wire valve for zoning hydronics system,push-in wiring panel and auxiliary switch 3/4"valve,24v	B163-106R	1311-102	3/4"	Sweat	50 PSI	24	Terminal
White Rodgers	3 wire valve for zoning hydronics system,push-in wiring panel and auxiliary switch 1"valve,24v	B163-107R	1311-103	1-1/4"	Sweat	50 PSI	24	Terminal

## HONEYWELL HYDRONIC CONTROLS

OEM	Description	Reman Part Number	OEM Part Number	Mount Style	Differential	Voltage	Temperature Range
Honeywell	Combo control, low limit control,range 60-200,diff.10-20	C311R	L147A	Horozontal	10 - 20°F	115	60 - 200°F
Honeywell	Combo control, high limit & circulator control,range 180-240,diff.10-15,vertical mount,24V gas valve.	C312-10R	L8148E	Vertical	15°F	24	180 - 240°F

# HYDRONICS

## REPLACEMENT HONEYWELL & WHITE RODGERS POWER HEADS & VALVE ASSEMBLIES



B163-112R

OEM	Description	Reman Part Number	OEM Part Number	Voltage	Electrical Connection
Honeywell	Replacement head for V8044F with end switch. 24V. Connect to screw terminal block on same side of manual lever. Use with 2-way, spring return to close type valves	B163-7R	40003916-048	24	Terminal
Honeywell	New style powerhead type, screw terminals, no ball assembly	B163-10R	V8043F-A	24	Terminal
Honeywell	New style power head type, 18"yellow leads 22"red leads, no ball assembly	B163-11R	V8043E-A	24	18" Leads
Honeywell	Power head with leads, old style, ball assembly	B163-12R	V8043F-B	24	18" Leads
Honeywell	Power head type with leads, old style, ball assembly	B163-14R	V8043E-B	24	Terminal
White Rodgers	W/R, for use on 2&3 wires 1300 series zone valve, replacement motor assembly, screw terminals ,self aligning barrel-type, stainless steel valve stem	B163-112R	F19-0097	24	Terminal
White Rodgers	W/R, for use on 2&3 wires 1300 series zone valve, replacement motor assembly, screw terminals ,self aligning barrel-type, stainless steel valve stem	B163-113R	F19-0104	24	Terminal
White Rodgers	Replacement valve assembly,for use on 1300 series,3/4"valve	B163-114R	F84-0434	-	-

**All Sid Harvey Remanufactured Products**

**NOW WITH 5 YEAR WARRANTY**

**Better Product + Better Price = Better Warranty**





# HYDRONICS

## HONEYWELL STEAM CONTROLS



C354R

OEM	Description	Reman Part Number	OEM Part Number	Operating Pressure Range	Differential	Switch Action
Honeywell	Pressuretrol Controllers, used with suspension-type unit heaters controls safety for boilers, breaks circuit if pressure rises above level, adj:diff1-5,range 0.5-9.0, psi adj.,full load:8.0A @120Vac,5.1A @240Vac.	C354-1R	PA404B1023	0.5 - 9.0 PSI	1 - 5 PSI	SPST
Honeywell	Pressuretrol Controllers, controls safety for boilers, breaks circuit if pressure rises above level, adj:diff1-5,range 0.5-9.0, psi adj.,full load: 8.0A @120Vac,5.1A @240Vac	C354R	PA404A1033	0.5 - 9.0 PSI	1 - 5 PSI	SPST
Honeywell	Pressuretrol Controllers,auto/manual reset, pressure systems protection up to 300psi (2068 KPA). Operating range 2-15,switch opens. full load: 120Vac/8.0A, 240Vac/5.1A.,midscale diff.,on pressure rise.	C355-4R	L604A			
Honeywell	High limit pressure switch,breaks1circuit ,operating range 2-15psi,max surge 25 psi,incl.14026 Siphon Loop.,full load each circuit:9.8A@120Vac. 4.9A @240Vac.	C359-33R	L4079B1033	25 PSI Max.	2 - 15 PSI	SPST

## DUAL & RELIEF VALVES



B143-12R



B143-13R



B144-5R

OEM	Description	Reman Part Number	OEM Part Number	Inlet Union	Relief Pressure	Fast Fill Feature	Valve Type	Outlet	Regulation
Bell & Gossett	1/2" Bell and Gossett Reducing Valve	B138-12R	11092LE	Not Included	-	YES	REGULATING	1/2" NPT	10 - 25 PSI
Taco	1/2" Taco Dual Valve	B143-12R	334-T3	1/2" NPT	30 PSI	YES	DUAL	1/2" NPT	10 - 25 PSI
Taco	1/2" Taco Regulating Valve	B143-13R	329-T3	1/2" NPT	-	YES	REGULATING	1/2" NPT	10 - 25 PSI
Watts	1/2" Reducing Valve With Sweat Fitting	B144-5R	0386450	1/2" SWEAT	-	YES	REGULATING	1/2" NPT	10 - 25 PSI
Watts	1/2" Reducing Valve With Thread Fitting	B144-7R	0386500	1/2" NPT	-	YES	REGULATING	1/2" NPT	10 -25 PSI

# MOTORS

## BURNER MOTORS

Rotation when shaft is facing away from you.



A39-29R



A39-2R



A39-4R



A39-31R



A180-1R



A39-321R

OEM	Description	Reman Part Number	OEM Part Number	HP	Voltage	RPM	Rotation
Riello	Riello MF Series Mectron Motor	A180-1R	620-5	1/7	115	3250	CW
Burner Motors	1/7 HP 3450 RPM, Oil Burner Motor	A39-29R	EL2005	1/7	115	3450	CW
Burner Motors	1/8 HP 1725 RPM, Oil Burner Motor	A39-2R	MTROB5	1/8	115	1725	REV
Burner Motors	1/7 HP 3450 RPM, Oil Burner Motor	A39-31R	MTROB2	1/7	115	3450	REV
R.W. Beckett	1/7 HP 3450 RPM Oil Burner Motor CF375	A39-321R	21805U	1/7	115	3450	CW
R.W. Beckett	1/7 HP 3450 RPM PSC Burner Motor, Fits AFII Burner	A39-33R	21444U	1/7	115	3450	CW
Burner Motors	1/6 HP 3450 RPM, Oil Burner Motor	A39-34R	N/A	1/6	115	3450	REV
Burner Motors	1/4 HP 3450 RMP, Oil Burner Motor	A39-44R	MTROB4	1/4	115	3450	REV
Burner Motors	1/6 HP 1725 RPM, Oil Burner Motor	A39-4R	MTROB3	1/6	115	1725	REV
Burner Motors	1/3 HP 3450 RPM, Oil Burner Motor	A39-50R	GE4788	1/3	115/230	3450	REV
Burner Motors	1/2 HP 3450 RPM, Oil Burner Motor	A39-62R	316P955	1/2	115/230	3450	REV



# MOTORS

## BELL & GOSSETT CIRCULATOR MOTORS

Rotation when shaft is facing away from you.



A28-123R



A28-125R



A28-15R



A28-24R



A28-27R



A28-28R

OEM	Description	Reman Part Number	OEM Part Number	HP	Voltage	RPM	Rotation
Bell & Gossett	1/6 HP, 115/230V, 1725 RPM With Capacitor	A28-120R	111031	1/6	115/230	1725	CW
Bell & Gossett	1/4 HP, 115V, 1725 RPM, With Run Capacitor	A28-123R	111040	1/4	115	1725	CW
Bell & Gossett	1/3 HP, 115/230V, 1725 RPM, Capacitor Start/Run	A28-125R	111042	1/3	115/230	1725	CCW
Bell & Gossett	1/4 HP, 115V, 1725 RPM, With Run Capacitor	A28-126R	M10534	1/4	115	1725	CCW
Bell & Gossett	1/12 HP, 115V, Series 100 1725 RPM CW Rotation	A28-15R	111034	1/12	115	1725	CW
Bell & Gossett	1/6 HP, 115V, 1725 RPM, With Run Capacitor CW Rotation	A28-24R	111061	1/6	115	1725	CW
Bell & Gossett	1/2 HP, 115/230V, 1725 RPM, CCW Rotation	A28-27R	111044	1/2	115/208-230	1725	CCW
Bell & Gossett	1/2 HP, 208/230/460V, 1725 RPM, REV	A28-28R	111046	1/2	208-230/460	1725	REV
Bell & Gossett	1/3 HP, 208/230/460V, 1725 RPM, CCW Rotation	A28-29R	169227	1/3	208-230/460	1725	CCW
Bell & Gossett	3/4 HP, 115/230V, 1725 RPM, CCW Rotation	A28-30R	169230	3/4	115/230	1725	CCW
Bell & Gossett	3/4 HP, 208/230/460V, CCW Rotation	A28-32R	111049	3/4	208-230/460	1725	REV
Bell & Gossett	1 HP, 208/230/460V, 1725 RPM, CCW Rotation	A28-36R	169233	1	208-230/460	1725	REV

# MOTORS

## TACO CIRCULATOR MOTORS

Rotation when shaft is facing away from you.



A28-60R



A28-64R

OEM	Description	Reman Part Number	OEM Part Number	HP	Voltage	RPM	Rotation
Taco	1/8 HP, 115V, 1725 RPM, CCW Rotation W/Cradle	A28-52R	N/A	1/8	115	1725	CCW
Taco	1/8 HP, 115V, 1725 RPM CW Rotation W/Cradle	A28-60R	110-185RP	1/8	115	1725	CW
Taco	1/6 HP, 115V, 1725 RPM, CW Rotation W/Cradle	A28-62R	N/A	1/6	115	1725	CW
Taco	1/12 HP, 115 Vlt., CCW Rotation W/Cradle	A28-64R	110223	1/12	115	1725	CW
Taco	1/4 HP, 115 Vlt., W/O Bracket, 121 Series	A28-66R	121-151RP	1/4	115	1725	CW
Taco	1/3 HP, 115/230 Vlt., 131 Series	A28-69R	131-143RP	1/3	115/230	1725	CW
Taco	1/3 HP, 115 Vlt., 112 Series	A28-70R	12-074RP	1/3	115	3450	CW
Taco	1/2 HP, 115/230 Vlt., 132 Series	A28-72R	132-096	1/2	115/230	1725	CW
Taco	3/4 HP, 115/230 Vlt., 133 Series	A28-75R	131-119	3/4	115/230	1725	CW

**All Sid Harvey Remanufactured Products**

**NOW WITH 5 YEAR WARRANTY**

**Better Product + Better Price = Better Warranty**



# MOTORS

## BLOWER MOTORS

Rotation when shaft is facing away from you.



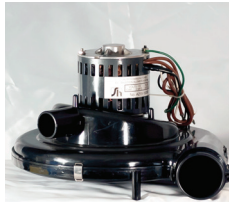
A22-28R

OEM	Description	Reman Part Number	OEM Part Number	HP	Voltage	RPM	Rotation
Nidec	1/4 HP 1725 RPM Blower Motor 1/2" Shaft	A22-14R	MTR14115BD	1/4	115	1725	REV
Nidec	1/3 HP 1725 RPM Blower Motor 1/2" Shaft	A22-28R	MTR13115BD	1/3	115	1725	REV
Nidec	1/2 HP 1725 RPM Blower Motor 1/2" Shaft	A22-42R	MTR12115BD	1/2	115	1725	REV
Nidec	3/4 HP 1725 RPM Blower Motor Capacitor Start, 5/8" Shaft	A24-60R	D34CPA2PH9	3/4	115/230	1725	REV

## SPECIALTY MOTORS



A166R



A215-100R



S14-1R

OEM	Description	Reman Part Number	OEM Part Number	HP	Voltage
Sid Harvey's	7/8 HP Replacement Vacuum Motor	A166R	A166	7/8	115
I.C.P.	Draft Inducer	A215-100R	1011350	-	115
Sid Harvey's	Complete Vacuum Head	S14-1R	N/A	-	115



# OIL DELIVERY NOZZLES

## SCULLY OIL DELIVERY NOZZLES



543-40R

OEM	Description	Reman Part Number	OEM Part Number	Anti-Drip Valve	Outlet	Inlet Size	Inlet Swivel
Scully	Complete 1 1/4 Scully Oil Delivery Nozzle - Female	543-10R	05062	3 PSI	Brass Swivel	1 - 1/4" FEMALE	Included
Scully	Complete 1 1/4 Scully Oil Delivery Nozzle - Male	543-11R	05100	3 PSI	Brass Swivel	1 - 1/4" MALE	Included
Scully	Complete 1 1/2 Scully Oil Delivery Nozzle - Female	543-40R	05064	3 PSI	Brass Swivel	1 - 1/2" FEMALE	Included
Scully	Complete 1 1/2 Scully Oil Delivery Nozzle - Male	543-41R	05106	3 PSI	Brass Swivel	1 - 1/2" MALE	Included

Sid Harvey's remanufacturing division is not limited to the products you see in this catalog. In addition to our Electrical, Motor, Pump and Hydronic departments, we also have our own fully equipped machine shop on site. This allows us to remanufacture your less common or older products back to the original OEM specifications at a fraction of the price and makes re-installation much quicker and easier. And YES, all of our Commercial & Industrial products carry a 5 Year Warranty!!!



# PUMPS

## “A” PUMPS

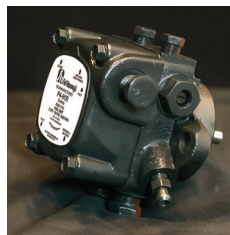
Rotation and nozzle port are determined looking at the shaft end of the unit.  
All Pumps are shipped without a by-pass plug.



P4-101R



P4-83R



P4-91R

OEM	Description	Reman Part Number	OEM Part Number	Nozzle Port	Mount Style	PSI	GPH	RPM	Rotation
Suntec	A1RA-7738 Suntec Waste Oil Pump	P1-7R	A1RA-7738	Right Hand	Flange	100	2.5	1725	CW
Suntec	A1YA-7912	P4-100R	A1VA7912	Right Hand	Flange	100-150	7	1725	CW
Suntec	A2YA-7916	P4-101R	A2VA7916	Right Hand	Flange	100-200	3/7	3450	CW
Suntec	A1YA-7112	P4-83R	A1YA7112	Right Hand	Flange	100-150	3	1725	CW
Suntec	A1YC-7114	P4-85R	A1YC7114	Left Hand	Flange	100-150	3	1725	CCW
Suntec	A1VA-7022	P4-87R	A1VA7022	Right Hand	Hub	100-150	3	1725	CW
Suntec	A2VA-7116	P4-91R	A2VA7116	Right Hand	Flange	100-150	3	3450	CW
Webster	M34DJ	P6-31R	M34DK-3	Right Hand	Flange	100-150	3	3450	CW

## “B” PUMPS

Rotation and nozzle port are determined looking at the shaft end of the unit.  
All Pumps are shipped without a by-pass plug.



P4-70R

OEM	Description	Reman Part Number	OEM Part Number	Nozzle Port	Mount Style	PSI	GPH	RPM	Rotation
Suntec	B2YA-8916	P4-30R	B2YA-8916	Right Hand	Flange	100-200	3/7	3450	CW
Suntec	B1YA-8212	P4-60R	B1YA-8212	Right Hand	Flange	100-150	3	1725	CW
Suntec	B2VA-8216	P4-70R	B2VA-8216	Right Hand	Flange	100-150	3	3450	CW



# PUMPS

## “H” PUMPS

Rotation and nozzle port are determined looking at the shaft end of the unit.  
All Pumps are shipped without a by-pass plug.

OEM	Description	Reman Part Number	OEM Part Number	Nozzle Port	Mount Style	PSI	GPH	RPM	Rotation
Suntec	HA2BB-100	P2-32R	HA2BB-100	Left Hand	Flange	100-150	6	3450	CW
Suntec	H3BB-200R	P4-10R	H3BB-200R	Left Hand	Hub	100-150	6	1725	CW
Suntec	H3BA-200	P4-11R	H3BA-200	Right Hand	Hub	100-150	6	1725	CW
Suntec	H3BC-200	P4-12R	H3BC-200	Left Hand	Hub	100-150	6	1725	CCW
Suntec	H3BD-200	P4-13R	H3BD-200	Right Hand	Hub	100-150	6	1725	CCW
Suntec	H3BB-100R	P4-14R	H3BB-100R	Left Hand	Flange	100-150	6	1725	CW
Suntec	H3BA-100	P4-15R	H3BA-100	Right Hand	Flange	100-150	6	1725	CW
Suntec	H3BC-100	P4-16R	H3BC-100	Left Hand	Flange	100-150	6	1725	CCW
Suntec	H3BD-100	P4-17R	H3BD-100	Right Hand	Flange	100-150	6	1725	CCW
Suntec	H3CC-408	P67-31R	H3CC-408	Left Hand	Flange	100-150	6	1725	CCW
Suntec	H6BB-E100	P90-40R	H6BB-E100	Left Hand	Flange	10-20	30	1725	CCW

## “J” PUMPS

Rotation and nozzle port are determined looking at the shaft end of the unit.  
All Pumps are shipped without a by-pass plug.

OEM	Description	Reman Part Number	OEM Part Number	Nozzle Port	Mount Style	PSI	GPH	RPM	Rotation
Suntec	J3BB-100	P1R	J3BB-100	Left Hand	Flange	100-150	6	1725	CW
Suntec	J3BA-100	P1-1R	J3BA-100	Right Hand	Flange	100-150	6	1725	CW
Suntec	J3BC-100	P1-2R	J3BC-100	Left Hand	Flange	100-150	6	1725	CCW
Suntec	J3BD-100	P1-3R	J3BD-100	Right Hand	Flange	100-150	6	1725	CCW
Suntec	J3NBN-A132B Suntec Waste Oil Pump	P1-5R	J3NBN-A132B	Left Hand	Flange	100-150	6	1725	CW
Suntec	J3BB-200	P2R	J3BB-200	Left Hand	Hub	100-150	6	1725	CW
Suntec	J3BA-200	P2-1R	J3BA-200	Right Hand	Hub	100-150	6	1725	CW
Suntec	J3BC-200	P2-2R	J3BC-200	Left Hand	Hub	100-150	6	1725	CCW
Suntec	J3BD-200	P2-3R	J3BD-200	Right Hand	Hub	100-150	6	1725	CCW
R.W. Beckett	J3CB-300	P42-12R	J2BB300	Left Hand	Short Hub, Flange	100-150	6	1725	CW
R.W. Beckett	J3CC-406	P42-15R	J3CC406	Left Hand	Short Hub, Hub - 5/16 shaft	100-150	6	1725	CCW
R.W. Beckett	J3CC-300	P42-18R	J3CC300	Left Hand	Short Hub, Flange	100-150	6	1725	CCW
Suntec	JA2BB-300	P42-19R	JA2BB300	Left Hand	Short Hub, Hub	100-150	6	3450	CCW



# PUMPS

## SID HARVEY EXCLUSIVE PUMPS

Rotation and nozzle port are determined looking at the shaft end of the unit.  
All Pumps are shipped without a by-pass plug.



P1-20R



P239-2R



P4-90R

Description	Reman Part Number	Nozzle Port	Mount Style	PSI	GPH	RPM	Rotation
Reversible J Pump Nozzle Left - Flange	P1-20R	Left Hand	Flange	100-150	6	1725	Reversible
Reversible J Pump Nozzle Right - Flange	P1-21R	Right Hand	Flange	100-150	6	1725	Reversible
Reversible J Pump Nozzle Left - Hub	P2-20R	Left Hand	Hub	100-150	6	1725	Reversible
Reversible J Pump Nozzle Right - Hub	P2-21R	Right Hand	Hub	100-150	6	1725	Reversible
Supply Pump	P239-2R	-	-	-	24	1725	CW
Low Speed Kerosene Pump	P4-830R	Right Hand	Flange	100-150	3	1725	CW
Dual Speed Mini Pump	P4-90R	Right Hand	Flange	100-150	3	1725/3450	CW
High Speed Kerosene Pump	P4-910R	Right Hand	Flange	100-150	3	3450	CW

**All Sid Harvey Remanufactured Products**

**NOW WITH 5 YEAR WARRANTY**

**Better Product + Better Price = Better Warranty**



# PUMPS

## SOLENOID PUMPS

Rotation and nozzle port are determined looking at the shaft end of the unit.

All Pumps are shipped without a by-pass plug.



P4-150R



P4-198R



P4-199R

OEM	Description	Reman Part Number	OEM Part Number	Nozzle Port	Mount Style	PSI	GPH	RPM	Rotation
Suntec	2-Stage; High Capacity Pump	P1-6R	B2TA-8851N	Right Hand	Flange	100-300	16	3450	CW
Riello	Riello Fuel Pump, Fits F3-F15 & M3-M15 Burners	P4-150R	7001010	Right Hand	Hub	150-235	2	3250	CW
Suntec	Single Stage Suntec Oil Pump	P4-196R	A2VA-3006	Right Hand	Flange	100-200	3/4	3450	CW
R.W. Beckett	Single Stage Beckett Oil Pump With Coil	P4-198R	A2EA-6527	Right Hand	Flange	100-200	3/4	3450	CW
R.W. Beckett	Single Stage Beckett Oil Pump With Coil and Cord Set	P4-199R	N/A	Right Hand	Flange	100-200	3/4	3450	CW

## SPECIALTY PUMPS



P9-22R

OEM	Description	Reman Part Number	OEM Part Number	HP	Voltage
Franklin Electric	1/10 HP, 115 Vlt., Transfer Pump	P9-22R	555112	1/10	115
Blue Angel	Blue Angel Sump Pump	EC-50R	EC-50TK	1/2	115





# RECOVERY UNITS

## RECOVERY UNITS

Recovery units are not stocked in stores,  
cores must be sent to remanufacturing facility.



RM10R

OEM	Description	Reman Part Number	OEM Part Number	Voltage	HP	RPM
Appion	G1 Single	RM01R	G1	115	1/2	3000
Appion	G5 Twin	RM02R	G5	115	1/2	3000
CPS	Pro-Set CR700	RM03R	CR700	115	1	-
Inficon	Vortex	RM04R	Vortex	115	1/2	3000
ProMax	5410A	RM05R	5410A	115	1/2	1725
ProMax	5410EX	RM06R	5410EX	115	1/2	-
ProMax	RG5410HP	RM07R	RG5410HP	115	1/2	-
Ritchie	RecoverX 95760	RM08R	95760	115	1/6	-
Inficon	X-Tract-R	RM09R	X-Tract-R	115	1/3	-
ProMax	MiniMax	RM10R	MiniMax	115	1/2	1725
Ritchie	RecoverX	RM11R	RecoverX	115	1/6	1725



# VACUUM PUMPS

## VACUUM PUMPS

Vacuum pumps are not stocked in stores, cores must be sent to remanufacturing facility.

OEM	Description	Reman Part Number	OEM Part Number	Stage	CFM	HP	RPM
J/B	DV-42N (Platinum)	VP03R	DV-42N (Platinum)	Two	1.5	1/2	1725
RobinAir	15150 (VacuMaster)	VP04R	15150 (VacuMaster)	Two	1.5	1/3	1725
CPS	VP2D Pro-Set	VP05R	VP2D Pro-Set	Two	2	1/3	1725
CPS	VP2S Pro-Set	VP06R	VP2S Pro-Set	Single	2	1/4	1440/1720
CPS	VP3D Pro-Set	VP07R	VP3D Pro-Set	Two	3	1/3	1440/1720
CPS	VP3S Pro-Set	VP08R	VP3S Pro-Set	Single	3	1/4	1725
J/B	DV-3E (Eliminator)	VP09R	DV-3E (Eliminator)	Two	3	1/2	1725
J/B	DV-85C (FastVac)	VP10R	DV-85C (FastVac)	Two	3	1/2	1725
J/B	Fast Vac	VP11R	Fast Vac	Two	3	1/2	1725
J/B	DV-4E (Eliminator)	VP12R	DV-4E (Eliminator)	Two	4	1/2	1725
Ritchie	Yellow Jacket (SuperEvac)	VP13R	Yellow Jacket (SuperEvac)	Two	4	1/2	1725
RobinAir	15400	VP14R	15400	Two	4	1/3	1725
J/B	DV-142N (Platinum)	VP15R	DV-142N (Platinum)	Two	5	1/2	1725
RobinAir	15500 (VacuMaster)	VP16R	15500 (VacuMaster)	Two	5	1/3	1725
MasterCool	90066-R	VP17R	90066-R	Two	5	1/4	1725
CPS	VP6D Pro-Set	VP18R	VP6D Pro-Set	Two	6	1/2	2880/3440
CPS	VP6S Pro-Set	VP19R	VP6S Pro-Set	Single	6	1/2	2880/3440
J/B	DV-6E (Eliminator)	VP20R	DV-6E (Eliminator)	Two	6	1/2	1725
Ritchie	Yellow Jacket (SuperEvac)	VP21R	Yellow Jacket (SuperEvac)	Two	6	1/2	1725
RobinAir	15600 CoolTech	VP22R	15600 CoolTech	Two	6	1/3	1725
MasterCool	90066-2V-110	VP23R	90066-2V-110	Two	6	1/2	1725
J/B	DV-200N Platinum	VP24R	DV-200N Platinum	Two	7	1/2	1725
Ritchie	Yellow Jacket Bullet	VP25R	Yellow Jacket Bullet	Two	7	1/2	1725
Appion	Tez8	VP26R	Tez8	Two	8	N/A	1725
Ritchie	Yellow Jacket (SuperEvac)	VP27R	Yellow Jacket (SuperEvac)	Two	8	1/2	1725
RobinAir	15120A	VP28R	15120A	Two	10	1/2	1725
Ritchie	Yellow Jacket (SuperEvac)	VP29R	Yellow Jacket (SuperEvac)	Two	11	1/2	1725
CPS	VP12D Pro-Set	VP30R	VP12D Pro-Set	Two	12	1	2880/3440

# COMMERCIAL & INDUSTRIAL

 **Sid Harvey's**  
Remanufactured  
Products

## Did You Know...

*Sid Harvey's remanufactured products are not only for residential applications but also for **Commercial & Industrial Applications**.*

*Sid Harvey's remanufacturing division has a long & successful history of remanufacturing commercial and industrial products including motors, circulators, bearing assemblies, sump pumps and electrical units.*

*Remanufactured products can save you hours, days and even months. **HOW?** You receive the same unit you provided eliminating the need for additional work on re-install.*



## Sid Harvey's is the solution!!!

### *Why choose remanufactured over new? Remanufactured products...*

- Are environmentally friendly by keeping non-functioning units out of land fills
- Come with a **5 YEAR WARRANTY**
- Are **100% quality controlled and tested**
- Have quick turnaround time & **FREE** freight
- **SAVE** hundreds or even thousands of dollars



**ENGINEER  
ASSISTANCE  
AVAILABLE!  
QUICK & EASY  
QUOTE PROCESS!**

Come tour our facility outside of Myrtle Beach, SC and see why our products are better than new!  
Email [sales@sidharvey.com](mailto:sales@sidharvey.com) for more details • [www.sidharvey.com](http://www.sidharvey.com)

SID HARVEY'S » FOR BIGGER & BETTER SAVINGS

# REMANUFACTURED OIL BURNER MOTORS



A39-321R

## PERMANENT SPLIT CAPACITOR (PSC) OIL BURNER MOTOR

FEATURES: PSC reliability and clean operation, capacitor is ideally positioned for universal application, totally enclosed non-ventilated when mounted, automatic reset thermal overload protector, 104°F (40°C) ambient, class F insulation, ball bearings.

SH Reman Item #	HP	RPM/Speeds	Electrical	Leads	Frame	Rotation	Mount
A39-321R	1/7	3450/1 SPD	115V, 1 phase, 60Hz, 1.7 amp	13"	Nema 48M	Non-Reversible	M-flange

Competitive Cross Reference: Sid Harvey MTR0B1, RW Beckett 21805U, US Motors 3274



A39-31R

## SPLIT PHASE OIL BURNER MOTORS

FEATURES: Totally enclosed when mounted, 5.6" diameter, manual reset thermal overload protection, 104°F (40°C) ambient, ball bearings, reversible rotation.

SH Reman Item #	HP	RPM/Speeds	Electrical	Insulation	Leads	Frame	Mount
A39-31R	1/7	3450/1 SPD	115V, 1 phase, 60Hz, 2.6 amp	Class F	24"	Nema 48M	M-flange

Competitive Cross Reference: Sid Harvey MTR0B2, US Motors 3083

A39-4R	1/6	1725/1 SPD	115V, 1 phase, 60Hz, 3.1 amp	Class B	20"	Nema 48N	N-flange
--------	-----	------------	------------------------------	---------	-----	----------	----------

Competitive Cross Reference: Sid Harvey MTR0B3, US Motors 3252

A39-44R	1/4	3450/1 SPD	115V, 1 phase, 60Hz, 3.7 amp	Class B	20"	Nema 48N	N-flange
---------	-----	------------	------------------------------	---------	-----	----------	----------

Competitive Cross Reference: Sid Harvey MTR0B4, US Motors 2302

A39-2R	1/8	1725/1 SPD	115V, 1 phase, 60Hz, 2.4 amp	Class B	20"	Nema 48N	N-flange
--------	-----	------------	------------------------------	---------	-----	----------	----------

Competitive Cross Reference: Sid Harvey MTR0B5, US Motors 3196



A39-4R, A39-44R, A39-2R

REMANUFACTURED ITEMS AVAILABLE ON EXCHANGE FOR SIMILAR DEFECTIVE UNITS ONLY.  
ALL SID HARVEY REMANUFACTURED PRODUCTS CARRY A 5 YEAR WARRANTY  
AND ARE REMANUFACTURED IN THE USA.

 **Sid Harvey's**<sup>®</sup>  
WHOLESALE DISTRIBUTORS  
Heating, Refrigeration, A/C Parts & Equipment

75 Branches Nationwide  
[www.sidharvey.com](http://www.sidharvey.com)





# BRANCH LISTING

76 BRANCHES

COLORADO	PHONE	FAX
133 CENTENNIAL: 9800 E. Easter Ave., STE 115, 80112.....	(303) 649-9800	(303) 649-9811
180 COLORADO SPRINGS: 741 Clark Pl., Unit 140, 80915....	(719) 442-6446	(719) 442-6449
130 DENVER: 2700 W. 6th Ave., 80204 .....	(303) 623-1236	(303) 623-8131
131 FT. COLLINS: 300 Lincoln Ct., 80524 .....	(970) 221-1929	(970) 493-0747

CONNECTICUT	PHONE	FAX
127 DANBURY: 41C Eagle Rd., 06810.....	(203) 778-8888	(203) 778-9597
147 GROTON: 266 Bridge St., 06340.....	(860) 448-4949	(860) 448-4945
011 HARTFORD: 206 Murphy Rd., 06114 .....	(860) 524-0250	(860) 524-1913
031 NEW HAVEN: 75 Hamilton St., 06511 .....	(203) 787-0251	(203) 787-1630
010 STRATFORD: 1935 Stratford Ave., 06615.....	(203) 375-4328	(203) 375-1340
119 WATERBURY: 278 Railroad Hill St., 06708 .....	(203) 756-4480	(203) 756-4476

DELAWARE	PHONE	FAX
187 CLAYMONT: 130 Hickman Rd., STE 32, 19703.....	(302) 746-7760	(302) 792-2675
188 DOVER: 1285 College Park Dr., 19904 .....	(302) 734-8936	(302) 734-0596

ILLINOIS	PHONE	FAX
071 CRESTWOOD: 13500 S. Kenton Ave., 60445 .....	(708) 385-8845	(708) 385-2285
045 LOMBARD: 641 N. Main St., 60148.....	(630) 627-6810	(630) 627-2149
072 ROCKFORD: 4620 American Rd., 61109 .....	(815) 964-9405	(815) 873-0026

MAINE	PHONE	FAX
060 BREWER: 46 Acme Rd., 04412.....	(207) 989-7285	(207) 989-4823
061 BANGOR: 149 Target Industrial Circle, 04401.....	(207) 307-7674	(207) 307-7721
036 PORTLAND: 160 St. John St., 04102 .....	(207) 775-2735	(207) 775-1150
126 PRESQUE ISLE: 79 Industrial St., 04769.....	(207) 764-8601	(207) 764-8328

MASSACHUSETTS	PHONE	FAX
013 AUBURN: 8 C St., 01501.....	(508) 756-4315	(508) 757-2737
040 MALDEN: 18 Green St., 02148 .....	(781) 322-9600	(781) 321-9794
034 WEST SPRINGFIELD: 8 Capital Drive, 01089 .....	(413) 788-0979	(413) 787-1916
041 WEST YARMOUTH: 46 Mid-Tech Dr., 02673 .....	(508) 771-4590	(508) 771-4819
080 WEYMOUTH: 50 Finnell Dr., Unit 10, 02188 .....	(781) 803-3344	(781) 331-1802

MICHIGAN	PHONE	FAX
115 NEGAUNEE: 3 Industrial Park Dr., 49866.....	(906) 226-2186	(906) 226-9509

MINNESOTA	PHONE	FAX
184 DULUTH: 2023 W. 1st St., 55806 .....	(218) 720-6202	(218) 720-6196

NEW HAMPSHIRE	PHONE	FAX
056 DOVER: 16 Industrial Park Dr., 03820 .....	(603) 740-9715	(603) 740-9719
057 MANCHESTER: 999 Candia Rd. 03109 .....	(603) 669-3060	(603) 626-4667

NEW JERSEY	PHONE	FAX
032 CLIFTON: 93 Entin Rd., 07014 .....	(973) 773-0230	(973) 773-4828
016 EDISON: 254 Plainfield Ave., 08817.....	(732) 985-1408	(732) 985-0453
086 LAKEWOOD: 1 Havenwood Ct., 08701.....	(732) 987-9958	(732) 364-4937
024 PENNSAUKEN: 7870 Airport Hwy., 08110 .....	(856) 662-6060	(856) 662-4655
049 ROSELLE: 159 E. 1st Ave., 07203.....	(908) 245-8688	(908) 245-0552
037 TRENTON: 1684 5th St., 08638.....	(609) 882-1766	(609) 882-4621
035 WHARTON: 315 Richard Mine Rd., 07885.....	(973) 620-9800	(973) 366-2650

NEW YORK	PHONE	FAX
042 ALBANY: 8 Jupiter Ln., 12205.....	(518) 869-3251	(518) 869-0939
004 BROOKLYN: 10720 Avenue D, 11236 .....	(718) 257-3347	(718) 257-6192
009 FARMINGDALE: 175 Central Ave., STE 300, 11735.....	(631) 755-9192	(631) 755-9247
007 HICKSVILLE: 600 W. John St., Unit 150, 11801.....	(516) 876-0446	(516) 433-1379
048 JOHNSON CITY: 136 Brown St., 13790 .....	(607) 797-9121	(607) 797-6760
102 LONG ISLAND CITY: 30-02 Borden Ave., 11101 .....	(917) 745-0830	(718) 786-8485
084 MEDFORD: 28 Industrial Blvd., 11763.....	(631) 205-5580	(631) 205-5581
181 MIDDLETOWN: 425 E. Main St., 10940 .....	(845) 344-3711	(845) 344-2161
003 MT. VERNON: 551 S. Columbus Ave., 10550 .....	(914) 668-3631	(914) 668-2344
067 PLATTSBURGH: 12 Harvey Way, 12901 .....	(518) 563-6660	(518) 563-1469
039 POUGHKEEPSIE: 161 Garden St., 12601 .....	(845) 454-4430	(845) 454-5810
043 QUEENSBURY: 39 Boulevard, 12804 .....	(518) 792-1900	(518) 792-1910
051 RIVERHEAD: 110 Kroemer Ave., 11901.....	(631) 727-3225	(631) 369-8207
050 ROCHESTER: 475 Central Ave., 14605.....	(585) 325-3670	(585) 325-1999
054 SYRACUSE: 333 Pulaski St., 13204 .....	(315) 422-4304	(315) 422-4807
145 WATERTOWN: 22610 Murrock Cir., STE 2, 13601.....	(315) 785-5502	(315) 785-6808
005 YORKVILLE: 606 Calder Ave., 13495.....	(315) 736-9389	(315) 736-9380

NORTH CAROLINA	PHONE	FAX
021 CHARLOTTE: 1624 Toal St., 28206.....	(980) 938-0762	(704) 376-2071
020 GREENSBORO: 117 S. Walnut Circle, 27409.....	(336) 285-5676	(336) 299-7465
100 WINSTON SALEM: 619 Brookstown Ave., 27101.....	(336) 331-3799	(336) 722-8560

PENNSYLVANIA	PHONE	FAX
026 ALLENTOWN: 1650 E. Race St., STE 2, 18109.....	(610) 443-0478	(610) 264-3479
033 KING OF PRUSSIA: 410 S. Henderson Rd., 19406.....	(610) 265-4220	(610) 265-6715
038 LANCASTER: 535A E. Ross St., 17602 .....	(717) 394-8044	(717) 299-6134
069 LEMOYNE: 57 S. 3rd St., STE A, 17043 .....	(717) 564-7181	(717) 564-7298
047 OLYPHANT: 1155 Mid-Valley Drive, 18447.....	(570) 487-2186	(570) 487-2187
098 PHILADELPHIA: 4244 Macalester St., 19124 .....	(215) 457-3300	(215) 329-0616
053 PITTSBURGH: 10 Readshaw Way, 15236.....	(412) 881-5220	(412) 881-0426
027 READING: 4408 Pottsville Pike, 19605 .....	(610) 939-9844	(610) 939-9847
075 WELLSBORO: 125 East Ave., 16901 .....	(570) 723-1200	(570) 723-1202
023 YORK: 1124 Roosevelt Ave., 17404 .....	(717) 843-4213	(717) 846-4702

RHODE ISLAND	PHONE	FAX
014 PROVIDENCE: 89 Corliss St., 02904 .....	(401) 521-9332	(401) 521-9278

SOUTH CAROLINA	PHONE	FAX
065 MYRTLE BEACH: 1308 B Dividend Loop, 29577 .....	(843) 945-9610	(843) 839-2036

VERMONT	PHONE	FAX
186 RUTLAND: 55 Quality Ln., 05701 .....	(802) 775-8855	(802) 775-8849
082 WILLISTON: 86 Leroy Rd., 05495 .....	(802) 658-4072	(802) 658-0534

WEST VIRGINIA	PHONE	FAX
092 HUNTINGTON: 2400 First Ave., 25703 .....	(304) 522-0671	(304) 523-7423
094 MORGANTOWN: 2208 Industrial Park Rd., 26501 .....	(304) 296-0496	(304) 296-2303
095 PARKERSBURG: 1900 12th Ave., 26101.....	(681) 588-0023	(304) 422-2751

WISCONSIN	PHONE	FAX
108 APPLETON: 935 N. Perkins St., 54914 .....	(920) 735-0606	(920) 735-6510
073 MADISON: 2819 Index Rd., 53713 .....	(608) 271-9533	(608) 271-4083
058 MILWAUKEE: 4750 N. 124th St., 53225 .....	(414) 462-0900	(414) 462-0913

WYOMING	PHONE	FAX
135 CHEYENNE: 1812 Snyder Ave., 82001.....	(307) 635-4281	(307) 632-8570

NATIONAL HEADQUARTERS	PHONE	FAX
GARDEN CITY, NY: 605 Locust St., 11530.....	(516) 745-9200	(516) 222-9027

DISTRIBUTION CENTER	PHONE	FAX
085 WILKES BARRE, PA: .....	(570) 822-4795	(570) 830-4333
1052 Hanover St., Hanover Industrial Estates, 18706		

MANUFACTURING PLANT	PHONE	FAX
099 ANDREWS, SC: 11786 Gapway Rd., 29510 .....	(843) 264-3098	(843) 264-6513

DIRECT SALES	PHONE	FAX
.....	(800) 342-7839	(570) 830-4333
		(800 3 HARVEY)



# Sid Harvey's®

Serving the HVAC-R Industry Since 1931

## World's Largest Remanufacturer of Heating & Air Conditioning Parts

- Bearing Assemblies
- Burner / Blower Motors
- Cad Cell Relays
- Circulator Controls
- Complete Circulators
- Delivery Nozzles
- Draft Inducers
- Dual Valves
- Fuel Pumps
- Hot Water Controls
- Industrial Controls
- Low Water Cutoffs & Feeders
- Pressure Controls
- Primary Controls
- Refrigerant Recovery Units
- Stack Relays
- Sump Pumps
- Switching Relays
- Timers
- Vacuum Pumps
- Zone Valves

**SAVE TIME AND MONEY  
WITH EXACT REPLACEMENT PARTS!**

Featuring An Exclusive 5 Year Warranty On Remanufactured Parts

RESIDENTIAL • COMMERCIAL • INDUSTRIAL