

INSTALLATION GUIDE

- Cut a 5 ¾" X 10 ¾" rough opening. Fig.1
- Install the Lineset Box™ and secure with 8 – ¾" long galvanized deck screws (or equal). Fig.2
- Cut a hole with a hole-saw in the top of the box to the size of the line set. (For a 7/8 x 3/8 line set use a 1 7/8" hole-saw)
- Run the line set into the box to the bottom or thru it if you like to leave it long. Fig.3
- Run the low voltage wire into to box following the line set.
- Cut a 2nd hole in the top of the Lineset Box™ to run the condensation drain. (For a ¾" schedule 40 PVC use a 1" hole-saw)
- Cut a 7 inch long stub and glue it on a coupling. Fig.4 & 5
- Insert the 7 inch long stub into the hole you just made for the condensation drain. Fig.6
- Push the stub down until the coupling is tight to the top. Fig 7
- (This will insure that the condensation drain is sturdy, square and plumb in the box and will not be affected by other contractors and moved around from the inside) Fig.8
- Finished look. Fig.9
- Seal all holes from the inside with silicone.

This will insure the line set, condensation drain and low voltage wire are protected during the rest of construction.

J.T. Products, Inc. P.O. Box 626 Warwick, NY 10990

845.988.2000 Phone 845.988.2001 Fax

www.jtproducts.com sales@jtproducts.com

Lineset Box™

Fig.1



Fig.2



Fig.3

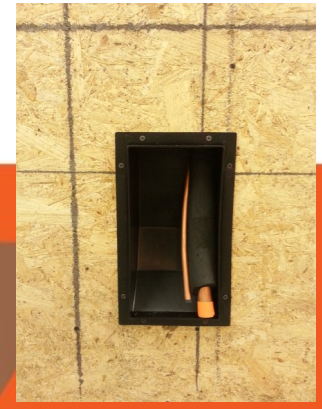


Fig.4



Fig.5



Fig.6



Fig.7



Fig.8

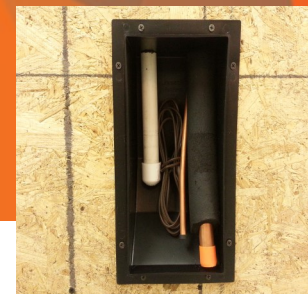


Fig.9

